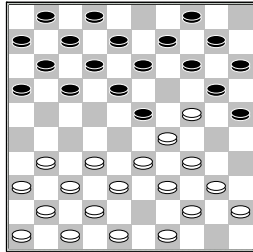
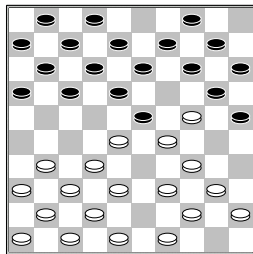


Luteijn, F.C. (Frits)
 Giphart, J. (Hans)
 Bram Limburg Boka:05-03-2013
 1.33-29 19-23 2.35-30
 20-25 3.40-35 14-19
 4.30-24 19x30 5.35x24
 9-14 6.45-40 14-20
 7.50-45 3-9 8.38-33
 10-14 9.43-38 5-10



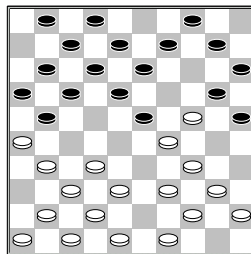
10.33-28



[grappige variant is
 10.31-27 14-19
 11.34-30 25x43
 12.48x39 23x43
 13.33-29 19x30
 14.29-23 18x29
 15.27-22 17x28 16.32x5
 43x32 17.37x28]
10...16-21
 [10...17-22 11.28x19
 14x23 12.31-27 22x31
 13.36x27 11-17
 (13...12-17 14.27-22
 17x28 15.34-30 25x43
 16.48x39 23x43
 17.32x5) 14.38-33 6-11
 15.48-43 17-21
 16.40-35 11-17
 17.33-28 21-26
 18.28x19 18-22
 19.27x18 12x14
 20.32-28 (niet goed
 is dan 20.34-30 25x23
 21.32-27 20x29
 22.27-21 16x27
 23.39-33 29x38 24.43x3
 7-11 25.3-8 14-19
 26.8-3 10-14 27.37-32
 11-17 28.3x21 26x17
 en zwart heeft een schijf
 meer) 20...17-22
 21.28x17 16-21
 22.42-38 21x12

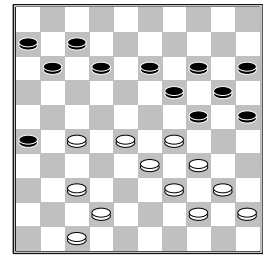
23.37-31 26x37
 24.41x32 met spannende
 stand]
 [10...17-21 11.28x19
 14x23 12.31-26 21-27
 (op 12...11-17
 13.48-43 7-11 14.32-28
 23x32 15.37x28 21-27
 16.29-23 18x29
 17.24x33 1-7 18.28-23
 13-18 19.41-37 18x29
 20.34x23 9-13 met
 spannende stand)
 13.32x21 16x27
 14.49-43 (14.48-43
 11-17 15.37-32 17-21
 16.26x17 12x21
 17.32-28 23x32
 18.42-37 8-12 19.37x28
 10-14 20.41-37 6-11
 21.37-32 21-26
 22.32x21 26x17
 23.40-35 18-22
 24.38-33) 14...11-17
 15.37-32 17-21
 16.26x17 12x21
 17.32-28 23x32
 18.34-30 25x23
 19.42-37 20x29
 20.37x19 13x24
 21.38-32 27x49
 22.40-35 49x40 23.45x5
]

11.28x19 14x23 12.31-26
11-16 13.36-31 6-11

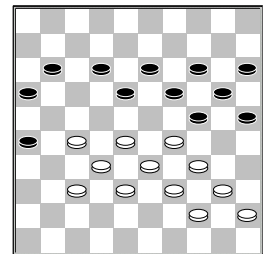


14.31-27
 [Op 14.38-33 had ik
 de volgende zet gespeeld
 23-28 15.33x22 18x38
 16.42x33 13-18
 17.31-27 21x32
 18.37x28 9-13 19.41-37
 1-6 20.48-42 17-22
 21.28x17 11x22
 22.46-41 7-11 23.41-36
 10-14 24.42-38 11-17
 25.37-31 14-19
 26.40-35 19x30
 27.35x24 13-19
 28.24x13 8x19]
14...23-28 15.32x23
21x43 16.49x38 10-14
17.37-32 13-19 18.24x22
17x19 19.41-37 9-13
20.46-41 4-9 21.38-33
19-24 22.42-38 14-19

23.32-28 9-14 24.37-32
1-6 25.41-37 16-21
26.26x17 11x22 27.28x17
12x21 28.32-28 8-12
29.48-42 21-26 30.38-32
7-11 31.32-27 2-7

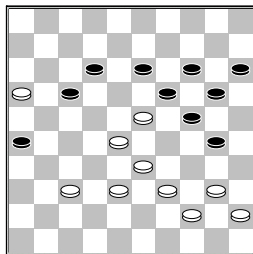


32.47-41
 [32.42-38? 19-23
 33.28x17 11x42]
32...11-16 33.42-38
12-18 34.37-32 7-12
35.41-37 6-11



36.29-23
 [36.28-22 24-30
A) 37.33-28 19-24
 38.29-23 18x29
 39.34x23 14-19
 40.23x14 20x9
 41.40-35 9-14
 42.44-40 11-17
 43.22x11 16x7
 44.40-34 7-11
 45.45-40 11-16
 46.28-22 14-19
 47.32-28 12-17
 48.22x11 16x7
 49.38-33 7-11
 50.28-23 19x28
 51.33x22 11-16
 52.22-17 13-18
 53.37-32 15-20
 54.32-28 16-21
 55.27x16 26-31
 56.16-11 (56.17-11
 31-37 57.11-7 37-41
 58.7-1 41-47 59.1x23
 47-33 60.34-29 33x6
 61.39-33 6x50
 62.23-32 24x33
 63.35x15) 56...31-36
 57.11-7 36-41
 58.17-12 41-47
 59.12x23 47-33 60.7-1
 (60.7-2 33x50
 61.28-22 50x6
 62.23-18 30x39

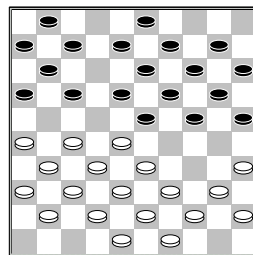
63.2x48 20-24
 64.18-12 24-29
 65.48-26) 60...33x6
 61.1-7 6x50 62.34-29
 24x33 63.35x15
B) 37.29-24 20x29
 38.33x35 18-23
 39.38-33 23-28
 40.32x23 19x17
 41.33-28 17-21
 42.37-32 12-18
 43.39-33 14-20
 44.34-29 20-24
 45.29x20 25x14
 46.40-34 11-17
 47.34-29 17-22
 48.28x17 21x12
 49.44-39 12-17
 50.32-28 17-21
 51.28-22 (51.28-23
 21x32 52.23x12 13-18
 53.12x23 32-37
 54.23-18 37-42
 55.39-34 14-19
 56.18-12 42-48
 57.12-8 48x25 58.8-3)
 51...21x32 52.39-34
 18x27 53.33-28 32x23
 54.29x20 15x24
 55.45-40 26-31
 56.34-30 31-37
 57.30x19]
36...18x29 37.34x23
11-17 38.27-21 16x27
39.32x21 25-30 40.21-16



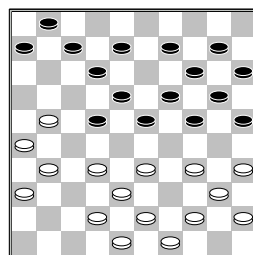
30-35?
 [>40...30-34
A) 41.40x29 17-22
 42.28x8 19x28 43.8x10
 (43.8x30 20-25
 44.33x22 25x41)
 43...15x4 44.33x22
 24x31 45.16-11
B) 41.39x30 24x35
 42.44-39 35x44
 43.39x50 20-24
 44.45-40 24-30
 45.40-34 30x39
 46.33x44 13-18
 47.38-32 18x29
 48.28-22 17x28
 49.32x34 12-17
 50.44-39 19-23
 51.39-33 14-20
 52.33-29 23-28
B1) 53.50-44 20-24

54.29x20 15x24
 55.44-40
B2) 53.34-30 20-25
 54.16-11 (54.30-24
 17-22 55.16-11 22-27
 56.11-7 27-31
 57.24-19 31x42
 58.19-13 28-32
 59.13-8 32-37 60.8-3
 37-41 61.29-24)
 54...25x23 55.11x33
 15-20]
41.28-22
2-0 (0.44/0.30)

□ **Dhauntal,S. (Sanjai)**
 ■ **Giphart,J. (Hans)**
 Bram Limburg Boka:05-03-2013
 1.33-28 20-25 2.39-33
 14-20 3.44-39 10-14
 4.50-44 5-10 5.31-27
 20-24 6.37-31 15-20
 7.41-37 10-15 8.46-41
 4-10 9.34-29 18-23
 10.29x18 12x23 11.31-26
 7-12 12.36-31 2-7
 13.41-36 12-18 14.47-41

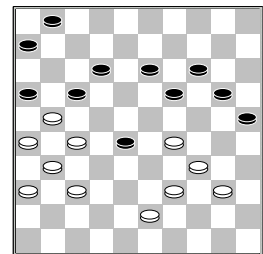


8-12
 [in de database staat
 de volgende variant
 14...7-12 15.27-21
 16x27 16.31x22 18x27
 17.32x21 23x32
 18.37x28 11-16
 19.41-37 16x27
 20.28-23 19x28
 21.33x11 6x17 22.37-31
 27-32 23.38x27 14-19
]
 15.27-21 16x27 16.32x21
 23x32 17.37x28 3-8
 18.41-37 18-23 19.37-32
 13-18 20.39-34 17-22
 21.28x17 11x22

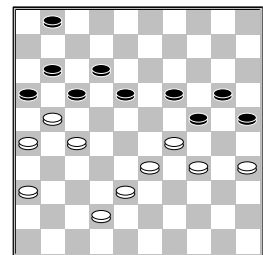


22.44-39

[op 22.43-39 had ik
 ook 9-13 gespeeld
 23.33-28 (23.33-29
 24x33 24.39x17 7-11
 25.44-39 11x22
 26.31-27 22x31
 27.26x37 20-24)
 23...22x33 24.38x29
 24x33 25.39x28 23-29
 26.34x23 18x29]
22...9-13 23.32-27
22-28 even ruimte maken
24.33x22 23-29 25.34x23
19x17 26.39-34 14-19
27.43-39 10-14 28.48-43
24-30 29.35x24 19x30
30.40-35 7-11 31.35x24
20x40 32.45x34 11-16
33.49-44 15-20 34.44-40
13-19 35.42-37 18-23
36.38-33 8-13 37.33-29
23-28

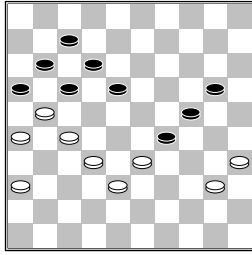


38.37-32
 [38.29-23 20-24
 39.23x32 17-22
 40.27x29 16x49
 41.40-35 49-16
 42.39-33 16-2]
38...28x37 39.31x42
13-18 40.40-35 19-24
41.39-33 14-19 42.43-38
6-11



43.42-37
 [>43.27-22 17x30
 44.21-17 11x22
 45.38-32 24x33
 46.35x15 33-39]
43...1-7
 [Door de tijdnood
 vergeet ik dat ik "gewoon"
 43...24-30 44.35x22
 17x30 kan spelen en dan
 is de winst niet zo
 moeilijk meer]
44.37-32 19-23 45.34-30
deze zet helemaal overzien

25x34 46.29x40 23-29



47.32-28

```
[ 47.35-30? 24x44
48.33x15 44-49
49.36-31 (49.15-10?
18-22 50.27x18 16x27
51.32x21 49x15 uit )
49...18-23 50.38-33
49-35 51.33-29 23x34
52.15-10 17-22
53.27x18 16x36 54.10-5
12x23 55.5x6 36-41 ]
```

47...18-23

```
[ 47...29-34 48.40x29
18-23 49.28x30 17-22
50.27x18 12x25
51.21-17 11x22
52.36-31 ]
```

```
48.28x30 20-25 49.33x24
25x45 50.24-20 17-22
51.27x18 12x23 52.20-14
16x27 53.14-10 45-50
54.10-4
1-1 (0.41/0.44)
```