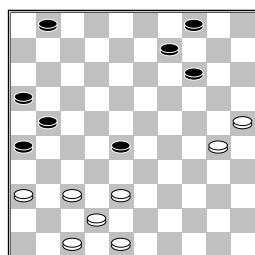


□ Dee, van, H. (Hein)
 ■ Malahé, P.M. (Pertap)
 Bram Limburg Bokal6-07-2013

1.32-28 17-22 2.28x17
 12x21 3.31-26 7-12
 4.26x17 11x22 5.37-32
 16-21 6.41-37 21-26
 7.46-41 6-11 8.32-28
 11-16 9.28x17 12x21
 10.37-32 19-23 11.41-37
 14-19 12.34-29 23x34
 13.39x30 19-23 14.30-25
 8-12 15.25x14 10x19
 16.44-39 5-10 17.50-44
 10-14 18.40-34 15-20
 19.34-29 23x34 20.39x30
 18-23 21.44-40 12-18
 22.30-25 20-24 23.33-29
 24x33 24.38x29 23x34
 25.40x29 18-23 26.29x18
 13x22 27.49-44 9-13
 28.32-28 22x33 29.43-38
 3-9 30.38x29 19-23
 31.29x18 13x22 32.35-30
 2-8 33.44-39 22-28
 34.45-40 8-13 35.40-34
 13-18 36.39-33 28x39
 37.34x43 18-23 38.43-38
 23-28



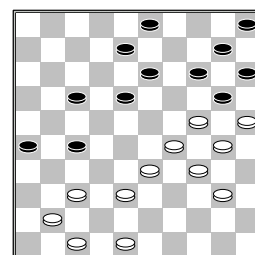
39.37-31
 [39.36-31 9-13
 A) 40.30-24 13-18
 41.38-32 28-33
 42.48-43 (42.42-38?
 33x42 43.47x38 18-22
 z+) 42...14-19
 43.24x22 33-38
 44.42x33 21-27
 45.32x21 26x48
 46.31-26 48x31
 47.26x37=
 B) 40.38-32 13-19
 (40...28-33 41.42-38
 33x42 42.47x38 1-7
 43.31-27 7-12
 44.38-33 4-10
 45.33-28 10-15
 46.30-24 14-19
 47.48-43 19x30
 48.25x34 12-18
 49.34-29 13-19
 50.28-22 19-23
 51.22x13 23x34
 52.13-9 34-40
 53.43-39 40-45

54.27-22 15-20 55.9-4
 20-24 56.4-15 24-30
 57.15-47 21-27=
 58.22x31 45-50
 59.32-27 50x46
 60.47-36 26x37
 61.27-21 16x27
 62.36x35=) 41.32x23
 19x28 42.42-38 1-7
 43.37-32 26x37
 44.32x23 21-26
 45.30-24 26-31
 46.24-19 31-36
 47.19x10 4x15
 48.23-18 37-41
 49.18-13 41-46
 50.13-9 46-5 51.9-3
 15-20 52.25x14 5x49=
]
 39...26x37 40.42x31
 21-26 41.38-32 26x37
 42.32x41 16-21 43.47-42
 9-13 44.42-38 21-27
 45.41-37 13-18 46.48-43
 1-7 47.43-39 7-12
 48.30-24 12-17 49.38-33
 17-22 50.24-20 14-19
 51.20-15 27-32 52.39-34
 28x30 53.37x17 18-22
 54.17x28 30-34 55.28-22
 34-40 56.22-17 40-44
 57.17-12 44-50 58.12-7
 19-23 59.7-2 23-29
 60.2-30 50-28 61.36-31
 29-33 62.30-43 28-22
 63.31-26 22-17 64.43-30
 33-38 65.30-35 17-28
 1-1

□ Baksoellah, B. (Bas)
 ■ Vroom, H.H.J. (Herman)
 Bram Limburg Bokal6-07-2013

1.32-28 18-22 2.31-26
 12-18 3.37-32 7-12
 4.32-27 22x31 5.26x37
 1-7 6.34-30 16-21
 7.30-25 18-22 8.40-34
 11-16 9.45-40 13-18
 10.37-32 21-27 11.32x21
 16x27 12.41-37 9-13
 13.37-32 27-31 14.36x27
 22x31 15.50-45 7-11
 16.34-29 4-9 17.40-34
 11-16 18.44-40 16-21
 19.34-30 21-26 20.30-24
 19x30 21.25x34 6-11
 22.34-30 11-16 23.30-25
 17-21 24.39-34 21-27
 25.32x21 26x17 26.38-32
 31-36 27.43-38 18-22
 28.34-30 13-18 29.40-34
 16-21 30.46-41 21-26
 31.42-37 2-7 32.49-43
 7-11 33.45-40 11-16
 34.43-39 9-13 35.30-24
 22-27 36.32x21 16x27

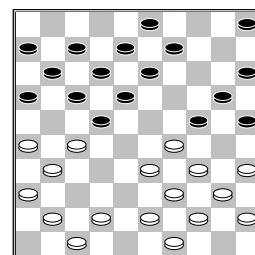
37.28-22 17x28 38.33x31
 36x27 39.39-33 12-17
 40.35-30?



[40.33-28 17-22
 41.28x17 8-12 42.17x19
 14x23 43.25x14 10x39
 44.29-24 27-31
 45.38-32 31x42
 46.47x38 18-22
 47.41-36 22-27
 48.32x21 26x17
 49.36-31 3-8 50.38-32
 17-22 51.32-27 39-44
 52.27x29 44-49
 53.29-23 49-38
 54.24-19 5-10 55.23-18
 10-14 56.19x10 15x4
 57.40-34 38-16
 58.31-26 16-7]
 40...26-31 41.37x26
 27-32 42.38x27 18-23
 43.29x9 20x38 44.9x20
 15x44
 0-2

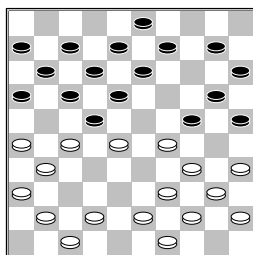
□ Kolstee, J. (John)
 ■ Schreurs, M.J. (Jan)
 Bram Limburg Bokal6-07-2013

1.33-29 19-23 2.39-33
 20-24 3.29x20 14x25
 4.44-39 9-14 5.32-28
 23x32 6.37x28 17-22
 7.28x17 11x22 8.41-37
 4-9 9.31-26 14-19
 10.37-31 10-14 11.50-44
 7-11 12.46-41 2-7
 13.33-29 14-20 14.42-37
 11-17 15.37-32 6-11
 16.32-27 1-6 17.48-42
 19-24 18.38-33?



5-10
 [18...22-28 19.33x22
 24x33 20.39x28 17-21
 21.26x17 12x23]

19.33-28?



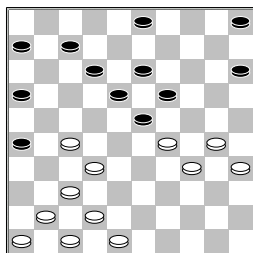
[Wit kan winnen door

- 19.35-30 24x35
- 20.33-28 22x24
- 21.34-30 25x34
- 22.39x19 13x24
- 23.27-21 16x27 24.31x4

] 19...22x33 20.29x38
10-14 21.34-30 25x34
22.39x10 15x4 Hierna
won wit later de partij.
2-0

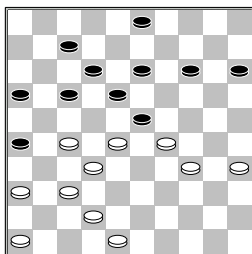
□ Luteijn, F.C. (Frits)
■ Teijn, F. (Frans)
Bram Limburg Bokal6-07-2013

- 1.33-28 17-21 2.39-33
- 21-26 3.44-39 11-17
- 4.50-44 6-11 5.33-29
- 19-24 6.39-33 1-6
- 7.44-39 17-22 8.28x17
- 11x22 9.49-44 14-19
- 10.34-30 20-25 11.29x20
- 25x14 12.31-27 22x31
- 13.36x27 15-20 14.30-25
- 19-23 15.35-30 10-15
- 16.40-35 14-19 17.25x14
- 9x20 18.44-40 4-9
- 19.30-25 7-11 20.25x14
- 19x10 21.40-34 11-17
- 22.34-30 10-14 23.39-34
- 17-21 24.45-40 14-20
- 25.33-28 13-19 26.30-25
- 8-13 27.25x14 9x20
- 28.34-30 20-24 29.43-39
- 12-17 30.39-33 17-22
- 31.28x17 21x12 32.40-34
- 2-7 33.33-29 24x33
- 34.38x29



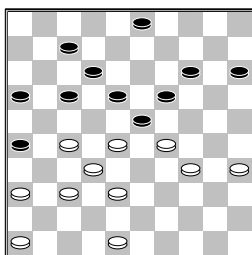
- 6-11
[34...12-17 35.30-24
19x39 36.42-38 23x34
37.35-30 34x25

- 38.38-33 39x28 39.32x1
-] 35.42-38 11-17 36.47-42
- 15-20 37.41-36 5-10
- 38.30-25 10-15 39.25x14
- 19x10 40.38-33 10-14
- 41.33-28



13-19?
[Zwart kan beter
spelen: 41...14-19

- 42.48-43 (42.42-38
- 16-21 43.27x16 17-21
- 44.16x27 19-24
- 45.28x17 24x11)
- 42...3-9 43.43-38
- 18-22 44.29x18 22x31
- 45.36x27 13x33
- 46.38x29 19-23
- 47.29x18 12x23
- 48.42-38 7-12 49.38-33
- 9-13]
- 42.42-38

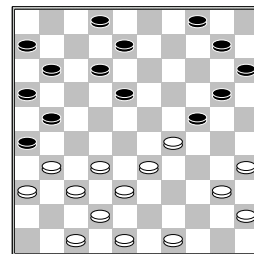


- 17-21
[42...14-20? 43.27-22
18x27 44.29x18 12x23
45.32x1]
43.28-22 14-20 44.22x24
12-17
[een idee voor
doorspelen met een schijf
minder is: 44...3-8
45.29x18 20x40
46.35x44 12x23]
45.29x18 20x40 46.35x44
17-22 47.18-12 22x33
48.12x1
2-0

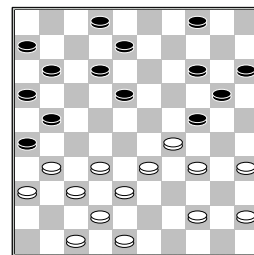
□ Langbroek, R. (Roel)
■ Bronstring, E.P. (Ever)
Bram Limburg Bokal6-07-2013

- 1.32-28 18-23 2.34-29
- 23x34 3.40x29 12-18
- 4.44-40 7-12 5.37-32
- 19-23 6.28x19 14x34

- 7.40x29 10-14 8.41-37
- 14-19 9.46-41 1-7
- 10.50-44 5-10 11.32-28
- 19-23 12.28x19 13x24
- 13.37-32 17-21 14.41-37
- 21-26 15.44-40 9-13
- 16.39-34 11-17 17.34-30
- 3-9 18.30x19 13x24
- 19.43-39 9-13 20.39-34
- 7-11 21.34-30 17-21
- 22.30x19 13x24



23.49-43
[23.49-44 10-14
24.40-34?



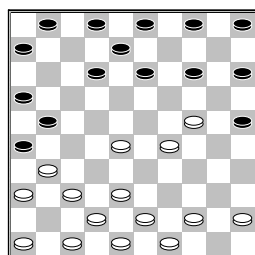
- 24-30 25.35x24
(25.34x25 14-19
26.25x23 21-27
27.31x13 8x50)
25...14-19 26.24x22
21-27 27.32x21 26x50
]

- 23...12-17 24.40-34
- 10-14 25.43-39 14-19
- 26.31-27 19-23 27.45-40
- 8-13 28.48-43 23-28
- 29.32x12 21x41 30.12x21
- 16x27 31.42-37 41x32
- 32.47-42 26-31 33.42-37
- 32x41 34.36x47 31-37
- 35.34-30 2-8 36.30x19
- 13x24 37.40-34 4-9
- 38.34-30 9-13 39.30x19
- 13x24
0-2

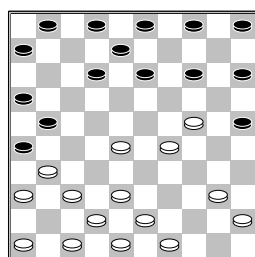
□ Lodder, P. (Piet)
■ Eenennaam, van, F.A. (F)
Bram Limburg Bokal6-07-2013

- 1.32-28 17-21 2.37-32
- 21-26 3.41-37 11-17
- 4.34-29 20-25 5.40-34
- 15-20 6.45-40 10-15
- 7.50-45 7-11 8.29-24
- 20x29 9.33x24 19x30
- 10.35x24 17-21 11.34-29

18-22 12.28x17 11x22
 13.32-28 22x33 14.39x28
 14-19 15.40-35 19x30
 16.35x24 9-14



17.44-40



[17.45-40 21-27
 18.31x22 15-20
 19.24x15 4-10 20.15x4
 1-7 21.4x18 12x45
 22.38-33 5-10 23.37-31
 26x37 24.42x31 7-12
 25.47-42 14-19
 26.44-40 45x34
 27.43-39 34x43
 28.48x39]

17...14-19

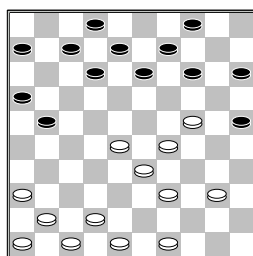
[Een idee voor zwart is de volgende variant
 17...3-9 18.38-33 5-10
 19.37-32 26x37
 20.42x31 14-20
 21.43-39 10-14
 22.48-43 14-19
 23.40-35 (23.29-23?
 20x27 24.23x3 4-10
 25.31x22 10-14 26.3x20
 25x14) 23...19x30
 24.35x24 9-14 25.45-40

A) 25...14-19
 26.40-35 19x30
 27.35x24 4-10
 28.49-44 10-14
 29.44-40 14-19
 30.40-35 19x30
 31.35x24 21-27
 32.31x22 13-18
 33.22x13 8x30
 34.43-38 30-35
 35.39-34 20-24
 36.29x20 15x24
 37.28-23 24-30
 38.32-28 30x39
 39.33x44 12-18
 40.23x12 25-30
 41.28-23 30-34

42.23-19 34-40
 43.44-39 40-45
 44.19-14 45-50
 45.39-34 50-45
 46.34-30 45x7
 47.14-10 (of
 47.30-24 35-40
 48.14-10 40-45
 49.10-5 45-50)
 47...35x24 48.10-5
 B) 25...4-10 26.47-41
 12-18 27.41-37

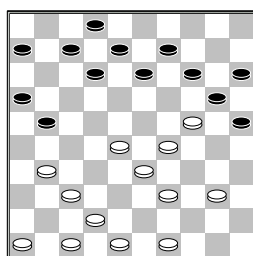
B1) 27...18-23
 28.29x9 20x27
 29.9x20 15x24
 30.31x22
 B2) 27...18-22
 28.28x26 16-21
 29.26x17 8-12
 30.17x19 14x45
 31.33-29 6-11
 32.49-44 (32.32-28
 1-7 33.37-32 11-17
 34.49-44 2-8
 35.43-38 17-22
 36.28x17 45-50)
 32...11-17 33.31-27
 1-7 34.43-38 7-12
 35.32-28 12-18
 36.37-32]

18.40-35 19x30 19.35x24
 5-10 20.38-33 3-9
 21.43-39 10-14 22.45-40
 1-7 23.37-32 26x37
 24.32x41



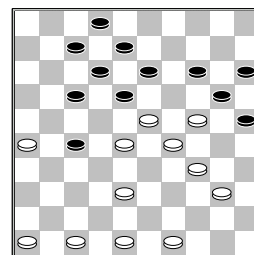
14-19

[24...14-20 25.36-31
 9-14 26.41-37 4-9



27.28-23 (27.37-32?
 21-27 28.31x22 13-19
 29.24x4 8-13 30.4x18
 12x45) 27...13-18
 28.39-34 9-13 29.37-32
 6-11 30.42-38 11-17
 31.31-26 21-27
 32.32x21 16x27

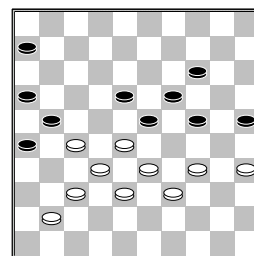
33.33-28



A) 33...14-19
 34.23x14 20x9
 35.38-33 9-14
 36.24-20 15x24
 37.29x9 13x4 38.34-29
 8-13 39.29-24 2-8
 40.33-29 18-22
 41.28-23 27-32
 42.40-34 22-28
 43.23-19 4-10 met
 spannende stand

B) 33...18-22
 34.48-42 22x33
 35.38-32 (35.23-19
 14x23 36.29x9 20x29
 37.34x23 17-22
 38.38x29 27-31
 39.26x37 22-28
 40.23x32 8-13 41.9x18
 12x45 z+)
 35...27x38 36.23-19
 14x23 37.29x9 20x29
 38.34x23 w+]

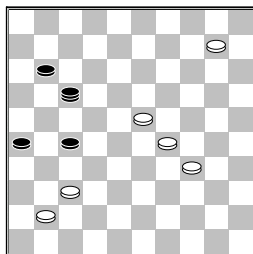
25.40-35 19x30 26.35x24
 13-19 27.24x13 8x19
 28.36-31 19-24 29.29x20
 15x24 30.39-34 9-14
 31.48-43 12-17 32.41-37
 7-12 33.37-32 12-18
 34.31-27 14-19 35.43-39
 18-23 36.42-38 4-9
 37.46-41 9-14 38.41-37
 2-8 39.49-44 8-13
 40.44-40 21-26 41.40-35
 17-21 42.47-41 13-18



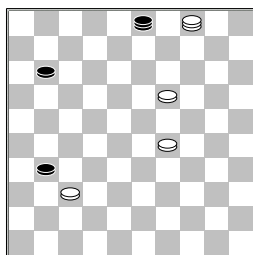
43.41-36

[Piet stuurde deze variant op, die ik zelf nog wat completer heb gemaakt 43.28-22 6-11
 44.22x13 19x8 45.33-28
 14-19 46.38-33 8-13
 47.27-22 11-17
 48.22x11 16x7 49.28-22

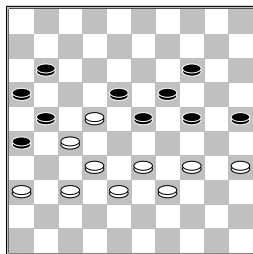
7-11 50.35-30 24x35
 51.33-29 23-28
 52.32x14 13-19
 53.14x23 25-30
 54.34x25 35-40
 55.25-20 40-45
 56.39-34 45-50
 57.20-14 50x17
 58.14-10 21-27



59.10-4 (59.10-5 27-32
 60.37x28 17x25 61.5-10
 26-31 62.23-18 25-48
 63.10-4 48-25 64.4-15
 25-3 65.18-13 3-21
 66.29-24 21-49)
 59...27-32 60.37x28
 17x25 61.23-19 25-3
 62.41-37 26-31



63.37x26 (63.4x36 3-12
 64.29-24 12-26
 65.36-31 11-17
 66.24-20 17-22 67.31x4
 26x15) 63...11-17
 64.29-24 17-21
 65.26x17 3x26]
43...6-11 44.28-22?

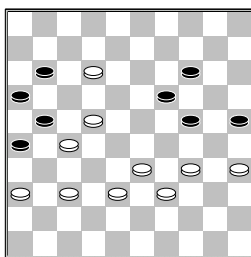


23-28! 45.32x12

(diagram)

21x41?

[zwart had kunnen
 winnen door: 45...21x43
 46.39x48 25-30
 47.34x25 14-20



48.25x23 11-17
 49.12x21 16x38 z+
 50.36-31 38-42
 51.37-32 26x28
 52.48x37 28-33
 53.37-32 33-39
 54.32-28 39-43
 55.35-30 24x35
 56.28-22 43-49
 57.22-18 49-21
 58.18-13 21-3]
46.36x47 11-17 47.22x11
16x18 48.33-28 26-31
49.47-42 18-23 50.38-32
24-29 51.28-22 29x40
52.35x44 25-30 53.22-17
23-28 54.32x23 19x28
55.17-12 28-32 56.12-7
31-36 57.7-1 36-41
58.44-40 41-46
1-1