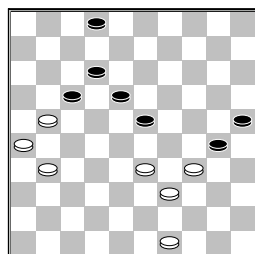


□ Houwing, J. (Jan)
 ■ Malahé, P.M. (Pertap)
 Nationale Clubcom 13-12-2014

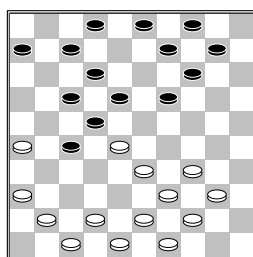
1.35-30	20-25	2.40-35
15-20	3.45-40	20-24
4.33-29	24x33	5.38x29
18-23	6.29x18	12x23
7.50-45	10-15	8.32-28
23x32	9.37x28	17-22
10.28x17	11x22	11.30-24
19x30	12.35x24	14-20
13.34-29	9-14	14.43-38
14-19	15.40-35	19x30
16.35x24	5-10	17.41-37
10-14	18.37-32	3-9
19.45-40	7-12	20.48-43
1-7	21.46-41	14-19
22.40-35	19x30	23.35x24
4-10	24.41-37	10-14
25.38-33	12-18	26.43-38
22-27	27.31x22	18x27
28.32x21	16x27	29.37-32
14-19	30.32x21	19x30
31.47-41	20-24	32.29x20
15x24	33.41-37	13-19
34.33-29	24x33	35.38x29
19-23	36.29x18	8-12
37.44-40	12x23	38.40-34
7-12	39.42-38	9-13
40.38-33	6-11	41.36-31
13-18	42.31-26	11-17
43.37-31		



17-22??
 [beter was de volgende variant waar zwart zeker niet minder staat.
 >43...2-7 44.49-44
 7-11 45.21-16 17-22
 46.16x7 12x1 47.31-27
 22x31 48.26x37 18-22
 49.44-40 30-35
 50.37-32 35x44
 51.39x50 1-7 52.33-29
 22-28 53.29x18 28x37=
]
 44.21-17 22x11 45.33-28
 23x32 46.31-27 32x21
 47.26x6 30-35 48.6-1
 25-30 49.34x25 35-40
 50.39-34 40x29 51.1-6
 29-34 52.49-44 2-8
 2-0

□ Lodder, P. (Piet)
 ■ Keetman, S. (Stef)
 Nationale Clubcom 13-12-2014

1.33-28	18-22	2.38-33
12-18	3.34-29	7-12
4.40-34	20-25	5.45-40
15-20	6.50-45	19-23
7.28x19	14x23	8.32-28
23x32	9.37x28	20-24
10.29x20	25x14	11.34-29
1-7	12.41-37	16-21
13.31-26	11-16	14.37-32
21-27	15.32x21	16x27
16.40-34	13-19	17.29-24
19x30	18.35x24	14-19
19.24x13	8x19	20.46-41
10-14	21.45-40	5-10



22.40-35
 [In de partij tussen Kees van Bakel tegen Eduard Autar (clubcompetitie 2009/2010) hoofdklasse. 20-02-2010 ging het als volgt verder
 22.43-38 2-8 23.48-43
 9-13 24.41-37 27-32
 25.38x27 22x31
 26.36x27 17-22
 27.28x17 12x41
 28.47x36 19-23
 29.42-37 8-12 30.43-38
 7-11 31.40-35 14-19
 32.35-30 23-28
 33.33x22 18x27
 34.39-33 19-23
 35.33-29 12-18
 36.44-39 3-8 37.29-24
 8-12 38.49-44 11-17
 39.44-40 6-11 40.24-20
 23-28 41.40-35 17-22
 42.37-31 18-23
 43.30-24 12-18
 44.20-15 10-14
 45.35-30 11-17
 46.30-25 13-19
 47.24x13 18x9 48.38-33
 9-13 49.34-30 13-18
 50.39-34 28x39
 51.34x43 27-32
 52.30-24 14-19
 53.24x13 18x9 54.25-20
 22-28 55.43-39 32-38
 56.31-27 38-42
 57.20-14 9x20 58.15x24
 42-48 59.27-21 48x2

60.21x12	28-33	
61.26-21	2-16	62.12-8
16x49	63.8-3	33-39
64.36-31	39-44	65.3-12
23-28	66.12-8	44-50
67.8-19	28-33	68.19-24
33-39	69.24-30	39-44
70.30-35	4-9	71.31-27
49x16	72.35x49	9-13
73.49-40	50-45	
74.40-44	13-18	met
remise]	
22...3-8	23.44-40	19-23
24.28x19	14x23	25.41-37
6-11	26.37-31	10-14
27.35-30	23-28	28.40-35
18-23	29.30-25	12-18
30.42-38	7-12	31.33-29
11-16	32.38-33	2-7
33.29-24	17-21	34.26x17
12x21	35.24-19	21-26
36.19x10	4x15	37.47-42
26x37	38.42x31	9-14
39.34-29	23x34	40.39x30
28x39	41.43x34	8-12
42.49-43	15-20	43.43-38
18-23	44.34-29	23x34
45.30x39	20-24	46.31-26
12-18	47.38-33	18-23
48.39-34	7-12	49.26-21
23-29	50.34x23	27-32
51.35-30	24x35	52.33-29
16x27	53.29-24	1-1

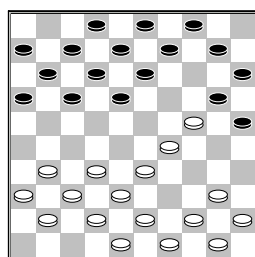
□ Coster, R. (Roy)
 ■ Groot, de, G.J. (Gerard)
 Nationale Clubcom 13-12-2014

1.34-30	18-22	2.30-25
12-18	3.40-34	19-23
4.44-40	14-19	5.25x14
9x20	6.32-28	23x32
7.37x28	7-12	8.41-37
10-14	9.37-32	5-10
10.50-44	1-7	11.46-41
22-27	12.31x22	18x27
13.32x21	17x26	14.42-37
12-18	15.34-30	19-23
16.28x19	14x23	17.30-25
10-14	18.35-30	4-9
19.37-32	7-12	20.41-37
16-21	21.47-42	11-16
22.33-29	23x34	23.40x29
13-19	24.30-24	19x30
25.25x34	14-19	26.38-33
21-27	27.32x21	26x17
28.37-32	9-13	29.43-38
17-22	30.45-40	20-25
31.32-28	3-9	32.28x17
12x21	33.29-24	19x30
34.40-35	9-14	35.35x24
14-19	36.44-40	19x30
37.40-35	18-22	38.35x24
13-19	39.24x13	8x19
40.42-37	21-26	41.38-32
22-27	42.32x21	16x27

43.34-29 19-24 44.29x20
 15x24 45.39-34 6-11
 46.34-29 11-17 47.29x20
 25x14
 1-1

□ Kok, J. (Jan)
 ■ Tesselaar, M.T. (Theo)
 Nationale Clubcom13-12-2014

1.32-28 18-22 2.37-32
 12-18 3.41-37 7-12
 4.46-41 20-25 5.34-29
 14-20 6.29-24 20x29
 7.33x24 19x30 8.35x24
 22x33 9.38x29 10-14
 10.42-38 1-7 11.47-42
 5-10 12.39-33 14-20

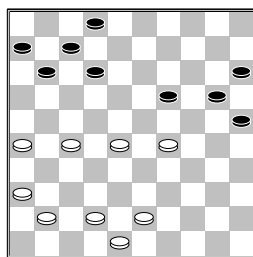


13.32-28
 [In de partij database van turbodatabase staat de volgende partij uit deze stand 13.44-39 10-14
 14.32-28 16-21
 15.31-26 18-22
 16.37-32 11-16
 17.41-37 14-19
 18.40-35 19x30
 19.35x24 9-14 20.28-23
 13-18 21.32-28 7-11
 22.45-40 8-13 23.40-34
 3-8 24.50-44 13-19
 25.24x13 18x9 26.37-31
 21-27 27.34-30 25x34
 28.39x30 9-13 29.44-39
 16-21 30.42-37 12-18
 31.23x3 20-25 32.3x20
 25x41 33.36x47 15x24
]

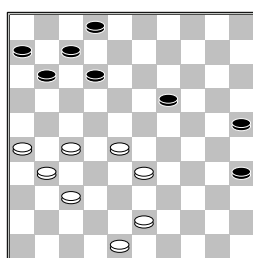
13...16-21 14.31-26
 21-27 15.37-31 18-23
 16.31x22 23x32 17.38x27
 17x39 18.44x33 10-14
 19.49-44 14-19 20.40-35
 19x30 21.35x24 9-14
 22.44-40 3-9 23.50-44
 14-19 24.40-35 19x30
 25.35x24 9-14 26.44-40
 14-19 27.40-35 19x30
 28.35x24 4-10 29.33-28
 10-14 30.45-40 14-19
 31.40-35 19x30 32.35x24
 13-19 33.24x13 8x19

(diagram)

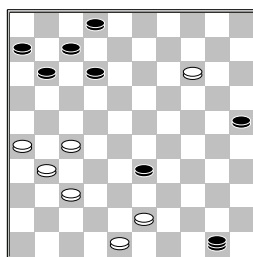
34.42-38



[>34.29-23 19-24
 35.27-22 24-30
 36.43-39 2-8 37.22-18
 30-34 38.39x30 25x34
 39.18-13 8x19 40.23x25
 34-40 41.28-22 40-44
]
 34...20-24 35.29x20
 15x24 36.38-33 24-30
 37.41-37 30-35 38.36-31



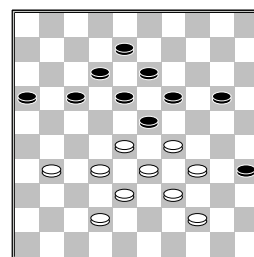
19-24
 [>38...2-8 39.26-21
 11-16 40.31-26 7-11
 41.28-23 19x39
 42.43x34 11-17
 43.37-32 6-11 44.32-28
 8-13 45.28-23]
 39.28-23 35-40 40.33-29
 24x33 41.23-19 40-45
 42.19-14 45-50



43.14-10
 [>43.37-32 33-38
 44.14-10 38x49
 45.48-43 49x38
 46.32x43 11-17
 47.27-22 17x28 48.10-5
 28-33 49.5-37 33-39
 50.43x34 50-45
 51.34-30 25x34]
 43...50-45 44.10-5
 33-39 45.43x34 45x46
 46.48-42 11-17 47.27-21
 46-23 48.5x11 7x36
 0-2

□ Kuipers, T. (Timo)
 ■ Baksoellah, B. (Bas)
 Nationale Clubcom13-12-2014

1.35-30 19-23 2.30-25
 20-24 3.32-28 23x32
 4.37x28 17-22 5.28x17
 12x21 6.31-26 7-12
 7.26x17 12x21 8.41-37
 1-7 9.46-41 7-12
 10.34-29 21-26 11.29x20
 15x24 12.40-34 12-17
 13.45-40 17-21 14.36-31
 11-17 15.31-27 21x32
 16.37x28 17-21 17.34-29
 2-7 18.29x20 18-23
 19.28x19 13x15 20.41-37
 9-13 21.37-31 26x37
 22.42x31 14-20 23.25x14
 10x19 24.38-32 5-10
 25.43-38 10-14 26.31-27
 4-9 27.40-34 8-12
 28.33-28 15-20 29.39-33
 12-18 30.44-39 20-24
 31.50-45 7-12 32.47-42
 18-23 33.49-44 21-26
 34.45-40 6-11 35.40-35
 11-17 36.48-43 13-18
 37.35-30 24x35 38.33-29
 26-31 39.27x36 14-20
 40.36-31 3-8 41.38-33
 9-13 42.43-38



17-22?? blunder die er voor zorgt dat het meteen uit is. voldoende bedenktijd is natuurlijk belangrijk.

[Via de volgende variant zorgt zwart voor een probleemloze remise
 >42...20-25 43.31-27
 25-30 44.34x25 23x43
 45.38x49 19-24
 46.42-37 13-19
 47.37-31 8-13 48.31-26
 18-23 49.49-43 23-29
 50.43-39 29x38
 51.32x43 12-18]
 43.28x17 12x21 44.31-27
 21-26 45.27-22 18x27
 46.29x9 26-31 47.32x21
 16x27 48.42-37 31x42
 49.38x47 20-25 50.9-4
 27-32 51.4-10 35-40
 52.10x37 40x38 53.37-42
 2-0

□ Eenennaam, van, F.A. (F)
 ■ Emmaneel, R. (René)
 Nationale Clubcompl3-12-2014

1.33-28 19-23 2.28x19
 14x23 3.39-33 10-14
 4.34-30 14-19 5.30-25
 17-22 6.25x14 9x20
 7.31-26 4-9 8.37-31
 22-27 9.31x22 18x27
 10.32x21 16x27 11.35-30
 12-18 12.41-37 8-12
 13.46-41 5-10 14.33-28
 23x32 15.37x28 10-14
 16.30-25 12-17 17.38-33
 17-22 18.28x17 11x22
 19.40-34 19-23 20.34-29
 23x34 21.44-40 13-19
 22.40x29 20-24 23.29x20
 15x24 24.45-40 7-12
 25.40-34 24-30 26.34-29
 30-35 27.41-37 9-13
 28.43-38 6-11 29.49-43
 1-7 30.29-24 19x30
 31.25x34 3-9 32.47-41
 14-20 33.50-44 20-25
 34.43-39 11-17 35.37-32
 7-11 36.32x21 22-28
 37.33x22 18x16 38.36-31
 12-18 39.31-27 2-8
 40.42-37 18-22 41.27x18
 13x22 42.38-32 8-12
 43.32-28 22x33 44.39x28
 12-18 45.48-43 9-13
 46.43-39 16-21 47.37-32
 11-16 48.41-37 18-22
 49.37-31 22x33 50.39x28
 13-19 51.34-29 17-22
 52.26x17 22x24 53.17-12
 25-30 54.12-7 30-34
 55.31-26 35-40 56.44x35
 34-39 57.7-1 39-43
 58.32-27 43-48 59.27-22
 48-25 60.22-17 16-21
 1-1

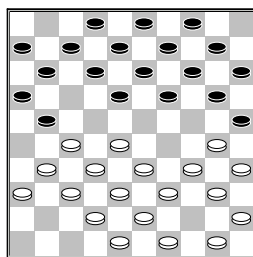
□ Koopmanschap, M. (Maur)
 ■ Dee, van, H. (Hein)
 Nationale Clubcompl3-12-2014

1.32-27 17-21 2.37-32
 21-26 3.32-28 26x37
 4.41x32 11-17 5.46-41
 7-11 6.41-37 1-7
 7.34-30 20-25 8.40-34
 14-20 9.44-40 10-14
 10.37-31 17-21 11.42-37
 5-10 12.47-42

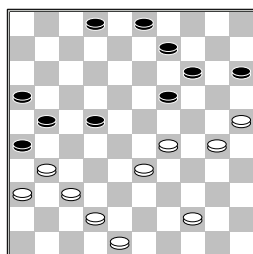
(diagram)

18-23

[zwart kan wit nu met
 een probleempje opzadelen
 door de volgende variant
 te spelen >12...20-24
 13.50-44 15-20



14.28-23 19x28
 15.30x19 14x23
 16.33x22 10-14
 17.34-29 23x34
 18.40x29 14-19
 19.31-26 9-14 20.26x17
 12x21 met een mooie en
 iets voordelige stand voor
 zwart]
 13.49-44 21-26 14.27-22
 11-17 15.22x11 6x17
 16.33-29 20-24 17.29x20
 15x24 18.34-29 24x22
 19.32-27 25x34 20.40x18
 12x23 21.27x29 17-21
 22.45-40 7-12 23.40-34
 12-18 24.29-24 19x30
 25.34x25 18-23 26.39-33
 13-18 27.35-30 10-15
 28.33-29 23x34 29.30x39
 14-19 30.39-33 19-23
 31.44-39 18-22 32.39-34
 23-28 33.34-29 28x39
 34.43x34 8-13 35.50-44
 13-19 36.38-33 9-14
 37.34-30 4-9



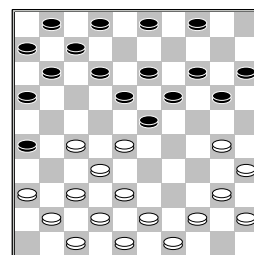
38.44-40?
 [Beter is >38.42-38
 3-8 39.38-32 21-27
 40.32x21 16x27
 41.48-43 2-7 met
 voordelige stand voor
 zwart]
 38...22-28 39.33x22
 19-23 40.29x18 9-13
 41.18x20 15x44 42.25-20
 3-9 43.22-18 2-8
 44.42-38 44-50 45.48-43
 50-6 46.38-32 6-11
 47.18-12 8x17 48.31-27
 11-7
 0-2

□ Zandvliet, H. (Harry)
 ■ Rood, A. (Arnoud)
 Nationale Clubcompl3-12-2014

1.32-28 19-23 2.28x19
 14x23 3.37-32 10-14
 4.34-30 14-19 5.30-25
 17-21 6.25x14 19x10
 7.35-30 21-26 8.41-37
 11-17 9.30-25 7-11
 10.40-34 23-28 11.32x23
 18x40 12.45x34 17-22
 13.38-32 10-14 14.31-27
 22x31 15.36x27 11-17
 16.43-38 13-18 17.46-41
 9-13 18.33-28 17-22
 19.28x17 12x21 20.38-33
 1-7 21.33-28 7-12
 22.39-33 2-7 23.41-36
 7-11 24.44-39 14-19
 25.42-38 5-10 26.27-22
 18x27 27.28-23 19x28
 28.33x31 12-18 29.50-44
 21-27 30.31x22 18x27
 31.32x21 26x17 32.39-33
 10-14 33.34-29 13-18
 34.44-39 8-13 35.48-42
 17-22 36.37-32 16-21
 37.39-34 4-9 38.34-30
 14-19 39.30-24 19x30
 40.25x34 9-14 41.34-30
 21-26 42.30-25 22-27
 43.32x21 26x17 44.42-37
 13-19 45.29-24
 1-1

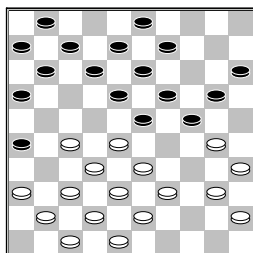
□ Jong, C.P.M. (Coen)
 ■ Giphart, J. (Hans)
 Nationale Clubcompl3-12-2014

1.32-28 20-25 2.37-32
 14-20 3.41-37 10-14
 4.31-27 5-10 5.46-41
 19-23 6.28x19 14x23
 7.33-28 9-14 8.28x19
 14x23 9.39-33 10-14
 10.44-39 13-19 11.50-44
 17-21 12.33-28 21-26
 13.34-30 25x34 14.39x30
 8-13

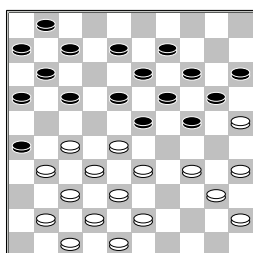


15.43-39
 [15.44-39 4-9
 16.38-33 12-17
 17.43-38 20-24
 18.49-43 17-21
 19.30-25 2-8 20.40-34
 (20.36-31 7-12
 21.40-34 12-17
 22.34-29 23x34
 23.39x30 17-22
 24.28x17 11x22

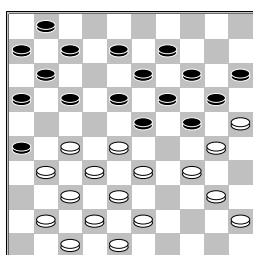
25.33-28 22x33
 26.38x20 15x24
 27.42-38 18-23
 28.45-40 14-20
 29.25x14 9x20 30.30-25
 1-7 31.25x14 19x10)
 20...26-31 21.37x17
 11x31 22.36x27 16-21
 23.27x16 18-22
 24.28x17 23-29
 25.34x23 19x46]
15...2-8 16.49-43 4-9
17.39-33 20-24 18.44-39
14-20



19.28-22?
 [>19.30-25 9-14
 20.36-31 12-17
 21.39-34
A) 21...3-9

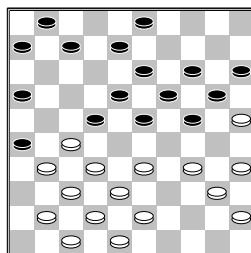


22.35-30



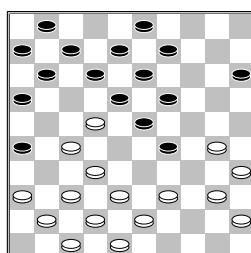
(22.43-39 17-22
 23.28x17 11x22
 24.48-43 7-12
 25.34-29 23x34
 26.39x30 24-29
 27.33x24 20x29
 28.43-39 12-17
 29.40-34 29x40
 30.35x44 8-12
 31.38-33) 22...24x44
 23.34-29 23x34
 24.33-29 34x23
 25.28-22 17x28
 26.43-39 44x33
 27.38x29 23x34

28.32x3 7-12 29.3x21
 26x17
B) 21...17-22
 22.28x17 11x22



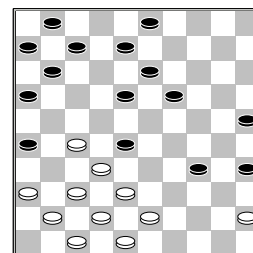
23.34-30 (In het
 openingen boek van
 Turbodatabase ging het
 verder vanuit deze stand

23.33-29 24x33
 24.38x29 7-12
 25.34-30 23x34
 26.40x29 19-23
 27.43-38 23x34
 28.30x39 12-17
 29.39-33 17-21
 30.35-30 13-19
 31.30-24 19x30
 32.25x34 8-13
 33.33-28 22x33
 34.38x29 14-19
 35.42-38 6-11
 36.41-36 1-7 37.27-22
 18x27 38.31x22 7-12
 39.32-28 20-25
 40.38-33 11-17
 41.22x11 16x7 en de
 partij eindigde in remise
) 23...24-29 24.33x24
 20x29 25.43-39 29-34
 26.40x29 23x43
 27.38x49 7-12
 28.42-38 19-23]
19...24-29 20.33x24
20x29



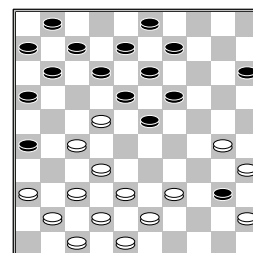
21.40-34
 [>21.30-25 9-14
 22.40-34 29x40
 23.35x44 15-20
 (23...12-17 24.39-34
 17x28 25.34-29 23x34
 26.32x12 7x18 met
 schijfwinst) 24.44-40
 20-24 25.40-35 12-17
 26.39-34 17x28
 27.35-30 24x35
 28.25-20 14x25

29.34-29 23x34

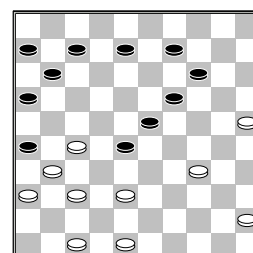


30.32x14
A) 30...34-40
 31.45x34 16-21
 32.27x16 7-12 33.16x7
 13-19 34.14x23 18x40
 35.7x18
B) 30...13-19
 31.14x12 8x17
 (31...7x18? 32.37-31
 26x46 33.27-21 16x27
 34.43-39 34x32
 35.47-41 46x37
 36.42x2)]

21...29x40

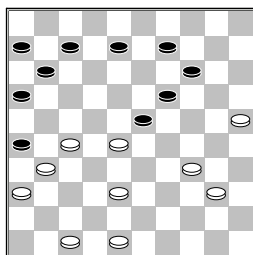


22.35x44
 [22.45x34 9-14
 23.30-24 19x30
 24.35x24 (24.34x25
 12-17 25.39-34 17x28)
 24...14-20 25.34-29
 23x34 26.39x30 20x29
 27.27-21 26x28
 28.32x34]
22...12-17 23.36-31
17x28 24.41-36 7-12
25.44-40 15-20 26.30-25
20-24 27.39-34 9-14
28.34-29 24x33 29.38x29
23x34 30.40x29 1-7
31.32x23 19x28 32.43-39
3-9 33.39-34 18-23
34.29x18 12x23 35.42-38
13-19



36.38-32

[36.45-40 28-32
37.37x28

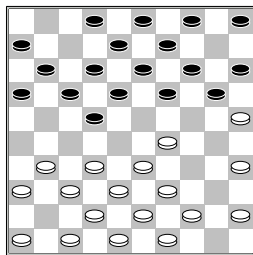


23x43 (37...23x21??
38.48-42 26x48
39.40-35 48x30
40.35x4) 38.48x39
26x37]

36...19-24 37.48-43
8-13 38.47-42 13-19
39.42-38 9-13 40.43-39
7-12 41.45-40 12-18
42.40-35 24-30 43.35x24
19x30 44.38-33 11-17
45.33x11 6x17
0-2

□ Yigitturk, B. (Berke)
■ Koopmanschap, R. (Raym
Nationale Clubcom13-12-2014

1.32-28 20-25 2.37-32
15-20 3.41-37 10-15
4.34-30 25x34 5.39x30
17-22 6.28x17 11x22
7.44-39 6-11 8.50-44
11-17 9.40-34 7-11
10.30-25 1-6 11.34-29



19-23
[in de database van
partijen in Turbodatabase
zit de volgende varianten
11...2-7 12.46-41 4-10
13.44-40

A) 13...19-23
14.31-27 22x31
15.36x27 23x34
16.39x30 20-24
17.30x19 14x23
18.43-39 17-22
19.49-43 22x31
20.37x26 10-14
21.41-37 15-20
22.33-29 23x34
23.40x29 18-23
24.29x18 12x23
25.38-33 20-24

26.42-38 14-19
27.47-41 8-12
28.41-36 11-17
29.37-31 3-8 30.31-27
17-21 31.26x17 12x21
32.48-42 5-10
33.42-37 10-14
34.33-28 13-18
35.45-40 9-13
36.40-34 21-26
37.34-30 7-11
38.38-33 8-12
39.43-38 11-17
40.39-34 17-21
41.34-29 23x34
42.30x39 18-23
43.39-34 12-18
44.27-22 18x27
45.35-30 24x35
46.33-29 13-18
47.28-22 35-40
48.22x24 40-44
49.29x18 26-31
50.37x17 44-49
51.32x21 49x11
B) 13...20-24
14.29x20 15x24
15.40-34 22-28
16.32x23 18x40
17.35x44 12-18
18.33-28 7-12
19.39-33 18-23
20.44-39 23x32
21.37x28 13-18
22.41-37 17-21
23.37-32 8-13
24.31-27 21-26
25.47-41 11-17
26.41-37 17-21
27.49-44 18-23
28.44-40 10-15
29.27-22 12-17
30.22x11 6x17
31.36-31 13-18
32.31-27 9-13
33.40-35 15-20
34.45-40 5-10
35.40-34 10-15
36.34-30 24-29
37.33x24 20x29
38.39-33 17-22
39.28x17 21x12
40.33x24 23-28
41.32x23 18x20
42.37-32 13-18
43.43-39 19-23
44.39-33 12-17
45.27-21 16x27
46.32x12 18x7
47.42-37 7-11
48.33-29 23x34
49.30x39 11-17
50.35-30 17-22
51.38-32 3-8 52.39-33
8-12 53.48-42 12-18
54.33-29 22-27
55.32x21 26x17

56.37-31 17-21
57.31-26 21-27
58.42-38 18-22
59.29-23 14-19
60.25x14 19x10
61.30-24 10-14
62.24-19 22-28
63.23x21 14x23
64.38-33 15-20
65.21-17 20-24
66.17-12 23-29
67.33-28 29-34
68.12-7 34-39 69.7-2
C) 13...17-21
14.31-27 22x31
15.37x17 11x22
16.41-37 20-24
17.29x20 15x24
18.37-31 19-23
19.32-27 14-19
20.40-34 24-30
21.35x24 19x30
22.33-29 9-14
23.38-33 10-15
24.42-38 12-17
25.31-26 22x31
26.26x37 6-11
27.38-32 17-22
28.48-42 14-20
29.25x14 7-12
30.34x25 23x34
31.39x30 13-19
32.14x23 18x27
33.43-38 5-10
34.45-40 10-14
35.30-24 8-13
36.49-44 12-18
37.44-39 16-21
38.39-34 18-23
39.40-35 21-26
40.34-30 14-19
41.38-32 27x38
42.42x33 23-28
(42...23-29 43.25-20
29x38 44.20-14 19x10
45.47-42 38x47
46.30-25 47x20
47.25x5 15-20
48.35-30) 43.33-29
13-18 44.24x13 18x9
45.36-31 11-17
46.37-32 28x37
47.31x42 22-28
48.47-41 remise]
12.44-40 23x34 13.40x29
13-19 14.49-44 8-13
15.44-40 2-8 16.46-41
4-10 17.40-34 17-21
18.31-27 22x31 19.37x17
11x22 20.41-37 19-23
21.37-31 12-17 22.32-28
23x32 23.38x27 20-24
24.29x20 15x24 25.42-38
10-15 26.47-42 5-10
27.34-29 14-19 28.29x20
15x24 29.45-40 9-14
30.40-34 19-23 31.34-29

23x34	32.39x19	14x23
33.35-30	13-19	34.30-24
19x30	35.25x34	8-13
36.31-26	22x31	37.36x27
17-22	38.33-28	23x21
39.26x28	10-14	40.34-29
14-19	41.38-33	6-11
1-1		