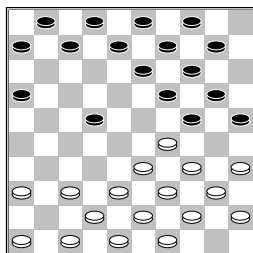


Bremmer,W. (Wim)  
 Parlevliet,J. (Jan)  
 Nationale Clubcom13-02-2016

1.33-29    20-25    2.39-33  
 15-20    3.44-39    19-24  
 4.50-44    14-19    5.32-28  
 10-14    6.37-32    5-10  
 7.41-37    17-22    8.28x17  
 12x21    9.32-28    21-26  
 10.37-32    26x37    11.32x41  
 18-22    12.28x17    11x22  
 13.41-37

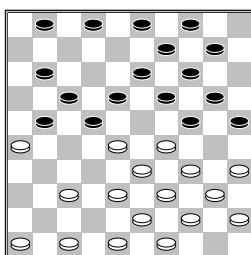


6-11

[ In de database komt de volgende variant voor:

13...13-18    14.37-32  
 (14.38-32    9-13  
 15.46-41    10-15  
 16.42-38    7-12    17.48-42  
 1-7    18.37-31    7-11  
 19.41-37    2-7    20.31-26  
 4-9    21.32-28    11-17  
 22.37-32    17-21  
 23.28x17    18-23  
 24.29x18    13x11  
 25.26x17    12x21  
 26.34-30    25x34  
 27.40x29    7-12    28.32-28  
 8-13    29.38-32    11-17  
 30.42-37    6-11    31.36-31  
 21-26    32.43-38    17-21  
 33.49-43    20-25  
 34.29x20    15x24  
 35.45-40    12-18  
 36.40-34    18-23  
 37.31-27    3-8    38.27-22  
 14-20    39.37-31    26x37  
 40.32x41    23x32  
 41.38x27    21x32  
 42.22-18    13x22  
 43.33-29    24x33    44.39x6  
 en wit won de partij. )  
 14...8-13    15.46-41    3-8  
 16.41-37    10-15  
 17.32-28    7-12    18.28x17  
 12x21    19.37-32    6-11  
 20.32-28    8-12    21.42-37  
 11-17    22.38-32    18-22  
 23.37-31    13-18  
 24.43-38    21-27  
 25.32x21    17x37    26.28x8  
 2x13    27.36-31    37x26  
 28.49-43    en zwart won  
 later. ]  
**14.37-32    16-21    15.32-28**

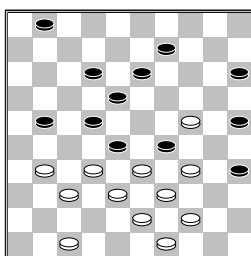
11-17    16.36-31    8-12  
 17.31-26    12-18    18.42-37  
 7-11



19.48-42

[ Een optie voor wit is de volgende variant maar dan moet wit wel de schijf op 28 winnen en dat lukt dus niet.

19.35-30  
 24x35    20.28-23    19x28  
 21.29-24    20x29  
 22.34x12    17x8    23.26x6  
 8-12    24.46-41    2-7  
 25.40-34    3-8    26.45-40  
 13-18    27.41-36    9-13  
 28.34-29    4-9    29.48-42  
 14-19    30.40-34    19-23  
 31.38-32    10-15  
 32.42-38    7-11    33.6x17  
 12x21    34.29-24    8-12  
 35.36-31    23-29

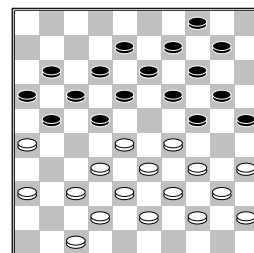


36.32x23

**A)** 36...29x20  
 37.23-19    13x24  
 38.34-30    25x34  
 39.39x19  
**B)** 36...29x40  
 37.23-19    40-45  
 38.19x26    45-50  
 39.37-32    9-13  
 40.44-40    35x44  
 41.49x40    13-19  
 42.24x13    18x9  
 43.40-35    15-20  
 44.32-28    20-24  
 45.28x17    9-13  
 46.17-11    13-18  
 (46...24-29    47.33x24  
 50x6    48.38-33    6x48  
 49.47-42    48x37  
 50.31x42    25-30  
 51.24-20    30-34  
 52.20-15    34-39  
 53.15-10    39-44  
 54.10-4    13-19    55.4-10  
 19-24    56.10-15    44-49

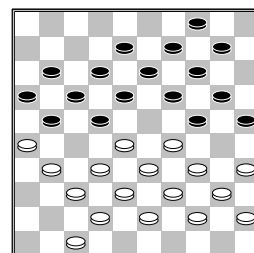
57.15x29    49-32  
 58.29-24)    47.38-32  
 24-29    48.33x24    50x46  
 49.31-27    46-37  
 50.11-6    37-48  
 51.35-30    48x39  
 52.27-21    25x34  
 53.21-17    39x11  
 54.6x17    ]

19...2-7    20.38-32    7-12  
 21.43-38    1-6    22.46-41  
 11-16    23.41-36    6-11  
 24.49-43    3-8

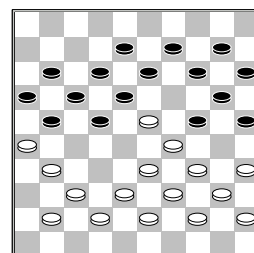


25.28-23

[ een leuke variant is >25.36-31



**A)** 25...24-30  
 26.35x15    19-23  
 27.28x19    14x23  
 28.32-28    23x41  
 29.47x36    10-14  
 30.29-23    18x29  
 31.33x24    14-19  
 32.40-35    19x30  
 33.35x24  
**B)** 25...10-15  
 26.28-23    19x28  
 27.32x23    4-10  
 28.47-41

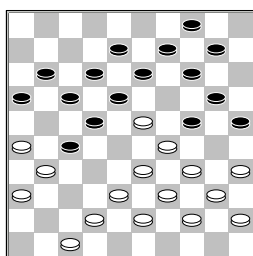


14-19  
**B1)** 29.23x5    9-14  
 30.5x30    22-28  
 31.33x22    18x47  
 32.30-24    47-36

33.38-32 21-27  
 34.32x21 16x27  
 35.39-33 17-22  
 36.35-30 11-16  
 37.43-38 12-17  
 38.44-39 16-21  
 39.40-35 36-31  
 40.45-40 31-36  
 41.33-28 22x44  
 42.40x49 17-22  
 43.26x28 27-32  
 44.38x27 36x47  
 45.37-32 47-41  
 46.32-27 41-28 en  
 zwart wint

**B2)** 29.23x3 22-28  
 30.33x22 18x47  
 31.37-31 24x33  
 32.39x28 10-14  
 33.28-22 17x28  
 34.26x6 28-33  
 35.38x29 47x24  
 36.31-27 24-42  
 37.27-21 (37.6-1  
 42-26 38.1x4 14-19  
 39.3x17 26x3)  
 37...16x27 38.6-1  
 42-26 39.1x10 15x4  
 40.3x15 met een  
 winnende stand ]

**25...19x28 26.32x23**  
**21-27 27.37-31**



**27-32**

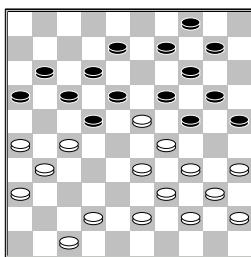
[ Een andere optie voor  
 zwart is >27...10-15  
 28.47-41 (28.34-30  
 25x34 29.39x10 27-32  
 30.38x27 20-24  
 31.29x20 18x49 32.27x7  
 11x2 33.10-5 15x24)  
 28...27-32 29.38x27  
 14-19 30.23x3 18-23  
 31.27x9 4x13 32.29x9  
 8-13 33.9x7 11x2  
 34.3x21 16x27 35.31x22  
 24-30 36.35x24 20x47  
 ]

**28.38x27 13-19**

(diagram)

**29.43-38**

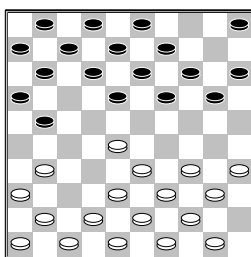
[ Nico Knoops zei altijd  
 het is soms moeilijk  
 kiezen uit zoveel lekkers.  
 Zo moet Wim ook gezeten



hebben achter het bord  
 toen hij de tekstzet  
 speelde. Een andere  
 mogelijkheid is  
 >29.42-38 19x28  
 30.26-21 17x37  
 31.38-32 22x31 32.33x2  
 37x28 33.36x27 24x33  
 34.27-21 16x27  
 35.2x7x11x27x28x12 uit.  
 ]  
**29...19x28 30.29-23**  
**28x19 31.27-21 16x27**  
**32.33-29 24x33 33.39x28**  
**22x33 34.31x15**  
**2-0**

□ Bosch, van der, C. (Cee)  
 ■ Vroom, H.H.J. (Herman)  
 Nationale Clubcomp13-02-2016

1.34-30 19-23 2.30-25  
 14-19 3.25x14 9x20  
 4.40-34 10-14 5.45-40  
 4-9 6.32-28 23x32  
 7.37x28 17-21



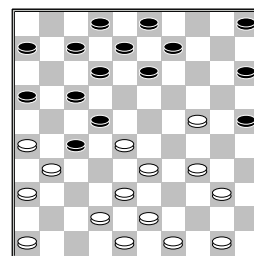
**8.35-30**

[ In de database staan  
 de volgende varianten  
 8.41-37 21-26 9.37-32  
 26x37

**A)** 10.42x31 11-17  
 11.46-41 18-23  
 12.41-37 12-18  
 13.47-42 7-12  
 14.50-45 1-7 15.34-29  
 23x34 16.39x30 7-11  
 17.44-39 2-7 18.30-25  
 17-22 19.28x17 12x21  
 20.40-34 7-12  
 21.31-27 18-23  
 22.34-29 23x34  
 23.39x30 19-23  
 24.33-28 14-19  
 25.25x14 9x20  
 26.49-44 5-10  
 27.44-39

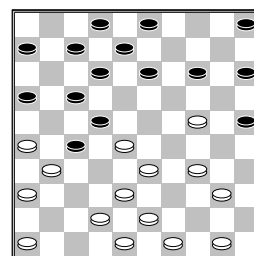
**B)** 10.32x41 11-17  
 (10...18-23 11.50-45  
 23x32 12.38x27 12-18  
 13.41-37 7-12  
 14.46-41 1-7 15.37-32  
 11-17 16.33-28 7-11  
 17.39-33 20-24  
 18.34-30 17-22  
 19.28x17 11x31  
 20.36x27) 11.41-37  
 6-11 12.46-41 1-6  
 13.50-45 16-21  
 14.34-29 21-26  
 15.29-24 20x29  
 16.33x24 19x30  
 17.35x24 5-10  
 18.38-33 18-23  
 19.28x19 14x23  
 20.33-29 23x34  
 21.39x30 10-14  
 22.42-38 12-18  
 23.44-39 7-12 ]

**8...18-23 9.42-37 23x32**  
**10.37x28 20-25 11.40-35**  
**14-20 12.47-42 12-18**  
**13.44-40 7-12 14.30-24**  
**19x30 15.35x24 20x29**  
**16.33x24 1-7 17.39-33**  
**11-17 18.41-37 18-22**  
**19.31-26 21-27 20.37-31**



**7-11**

[ Beter voor zwart is  
 >20...9-14



**A)** 21.34-29 15-20  
 22.24x15 5-10 23.15x4  
 14-19 24.4x18 12x45  
 25.43-39 7-12  
 26.39-34 12-18  
 27.34-29 19-24  
 28.29x20 25x14  
**B)** 21.50-45 17-21  
 22.28x17 (22.26x17  
 12x21 23.28x26 14-19  
 24.31x22 19x17)  
 22...7-11 23.31x22

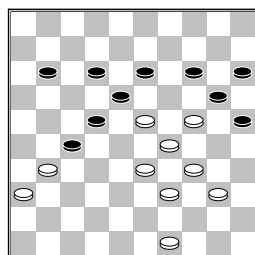
13-18 24.22x13 8x28  
 25.17x8 2x13 26.26x17  
 11x22  
 C) 21.43-39 15-20  
 22.24x15 25-30  
 23.34x25 5-10 24.15x4  
 6-11 25.4x18 12x45  
 ]

**21.50-45 2-7 22.34-29**  
**5-10 23.28-23 10-14**

**24.43-39**

[ Goede kansen voor wit  
 geeft >24.24-20 15x24  
 25.29x20 25-30  
 26.20-15 30-34  
 (26...16-21 27.43-39  
 13-19 28.40-34 19x28  
 29.34x25 12-18  
 30.33-29 8-13 31.38-33  
 13-19 32.45-40 9-13  
 33.40-34 7-12 34.34-30  
 3-9 35.39-34 28x39  
 36.34x43) 27.40x29  
 13-19 28.29-24 19x39  
 29.43x34 16-21  
 30.46-41 9-13 31.41-37  
 13-18 32.24-20 14x25  
 ]

**24...14-19 25.23x14**  
**9x20 26.42-37 3-9**  
**27.48-43 9-14 28.46-41**  
**16-21 29.38-32 27x38**  
**30.43x32 12-18 31.32-27**  
**21x32 32.37x28 22-27**  
**33.31x22 18x27 34.28-23**  
**7-12 35.40-34 13-18**  
**36.41-37 17-21 37.26x17**  
**11x22 38.45-40 6-11**  
**39.37-31 8-13**



**40.49-43?**

[ Beter voor wit is  
 >40.49-44 11-16  
 41.40-35

A) 41...22-28  
 42.23x21 16x27  
 43.31x22 18x27  
 44.33-28 12-17  
 45.28-23 14-19  
 46.23x14 20x9  
 47.29-23 9-14  
 48.34-29 17-21  
 49.39-34

B) 41...14-19  
 42.23x14 20x9  
 43.24-19 13x24  
 44.29x20 25x14

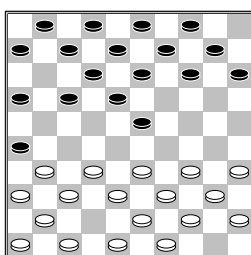
(44...15x24 45.33-29  
 24x33 46.39x8 9-13  
 47.31x22 13x2  
 48.22x13) 45.33-28  
 22x33 46.31x4 33-38  
 47.4-31 14-20  
 48.44-40 12-18  
 49.31x25 38-42  
 50.34-29 15-20  
 51.25x3 42-47  
 52.29-23  
 C) 41...13-19  
 42.24x13 18x9  
 43.23-19 14x23  
 44.29x7 ]

**40...27-32 41.43-38**  
**32x43 42.39x48 14-19**  
**43.23x14 20x9 44.48-42**  
**12-17 45.33-28 22x33**  
**46.29x38 18-23 47.31-27**  
**11-16 48.38-33 9-14**  
**49.42-38 14-20 50.36-31**  
**20x29 51.33x24 13-18**  
**52.38-32 17-22 53.31-26**  
**22x31 54.26x37 18-22**  
**55.37-31 22-28 56.32-27**  
**28-33 57.27-22 33-38**  
**58.24-19 23x14 59.22-18**  
**38-43 60.40-35 43-49**  
**61.31-26 49-44**

[ nu kan zwart het  
 uitmaken door  
 >61...25-30 62.34x25  
 (62.35x24 49-35  
 63.24-20 14x25  
 64.18-12 35-2 65.34-29  
 25-30 66.29-23 30-34  
 67.23-19 2x35 68.12-7  
 34-40 69.7-1 40-45  
 70.1-18 35-8 + )  
 62...49-44 63.25-20  
 15x24 64.18-12 44-17  
 65.12x21 16x27 ]  
**62.18-12 44-17 63.12x21**  
**16x27**  
**0-2**

□ Eenennaam, van, F.A. (F)  
 ■ Kromhout, R. (Rinus)  
 Nationale Clubcompl3-02-2016

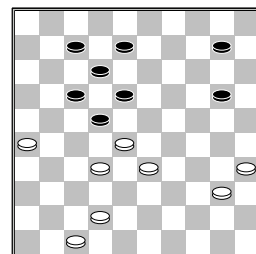
**1.32-28 19-23 2.28x19**  
**14x23 3.37-32 10-14**  
**4.34-30 14-19 5.30-25**  
**17-21 6.25x14 19x10**  
**7.42-37 21-26 8.40-34**  
**10-14 9.45-40 5-10**  
**10.50-45 11-17**



**11.34-30**

[ In de database komt de  
 volgende variant voor  
 11.47-42 6-11 12.35-30  
 1-6 13.30-25 14-19  
 14.34-30 10-14  
 15.40-35 17-22  
 16.44-40 22-27  
 17.31x22 18x27  
 18.32x21 26x17  
 19.37-32 12-18  
 20.42-37 7-12 21.30-24  
 19x30 22.25x34 13-19  
 23.35-30 8-13 24.30-24  
 19x30 25.34x25 2-8  
 26.48-42 14-19  
 27.40-34 9-14 28.34-29  
 23x34 29.39x30 16-21  
 30.45-40 4-9 31.40-35  
 21-27 32.32x21 17x26  
 33.37-32 11-17  
 34.41-37 6-11 35.46-41  
 later zou deze partij  
 remise worden ]

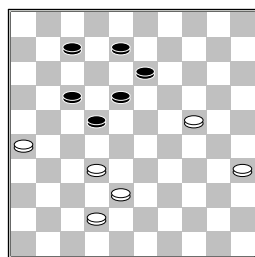
**11...7-11 12.32-28**  
**23x32 13.37x28 26x37**  
**14.41x32 17-22 15.28x17**  
**11x22 16.32-28 12-17**  
**17.36-31 13-19 18.30-25**  
**16-21 19.31-26 9-13**  
**20.39-34 6-11 21.34-30**  
**11-16 22.30-24 19x30**  
**23.25x34 13-19 24.44-39**  
**3-9 25.46-41 1-7**  
**26.41-37 7-12 27.48-42**  
**19-24 28.34-29 14-20**  
**29.40-34 21-27 30.37-32**  
**2-7 31.32x21 16x27**  
**32.38-32 27x38 33.43x32**  
**20-25 34.29x20 15x24**  
**35.34-29 10-15 36.29x20**  
**15x24 37.39-34 4-10**  
**38.49-44 9-14 39.44-40**  
**14-19 40.34-30 25x34**  
**41.40x20 10-15 42.20-14**  
**19x10 43.45-40 15-20**



**44.42-38**

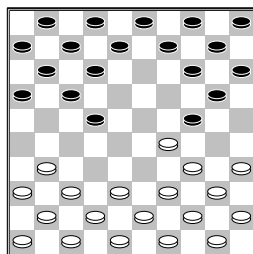
[ Sneller gaat het via  
 >44.40-34 10-14  
 45.35-30 14-19  
 46.34-29 17-21  
 47.26x17 12x21  
 48.28x26 19-23  
 49.30-25 23x34  
 50.25x14 34-40  
 51.14-10 40-44 52.10-5

7-11 (52...44-50  
 53.42-38 50x46  
 54.38-32 46x23  
 55.5x28; 52...44-49  
 53.32-27 49x16  
 54.26-21 16x29  
 55.42-38 29x42  
 56.47x38 Deze stand is  
 gewonnen in alle  
 varianten. Komt voor in de  
 eindspel database )  
 53.32-27 11-17  
 54.27-21 17-22 55.5-32  
 Uit ]  
**44...20-24 45.47-42**  
**10-14 46.40-34 14-20**  
 [ >46...14-19 47.33-29  
 ( Als 47.34-29  
 speelt, volgt 22-27  
 48.32x21 18-23  
 49.29x18 12x43 50.21x1  
 43-49 51.1-29 49-44  
 52.29x15 44x22  
 53.26-21 met iets betere  
 positie voor wit. )  
 47...24x33 48.28x39  
 8-13 49.34-30 7-11  
 50.42-37 11-16  
 51.37-31 16-21  
 52.30-25 19-24  
 53.38-33 18-23  
 54.39-34 24-30  
 55.35x24 22-27  
 56.31x11 13-19 57.26x8  
 19x37= ]  
**47.34-30 18-23 48.28x19**  
**24x13 49.30-24 20x29**  
**50.33x24 12-18**

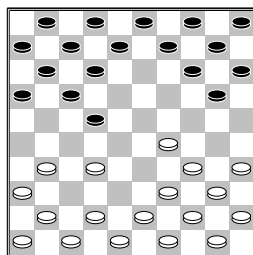


**51.32-28**  
 [ om zwart helemaal  
 kansloos te laten de  
 volgende variant  
 >51.32-27 22x31  
 52.26x37 18-23  
 53.24-20 23-29  
 54.20-15 13-19  
 55.15-10 19-24 56.10-5  
 29-34 57.5-28 17-21  
 58.28-33 24-30  
 59.35x24 34-40  
 60.33-50 40-45  
 61.38-33 7-11 62.24-19  
 ]  
**51...22x33 52.38x29**  
**17-22 53.24-20 22-28**  
**54.20-14 28-32 55.14-10**

**2-0**  
 □ **Vroegop, C.F. (Casper)**  
 ■ **Malahé, P.M. (Pertap)**  
 Nationale Clubcom13-02-2016  
**1.33-29 18-22 2.32-27**  
**19-24 3.27x18 13x22**

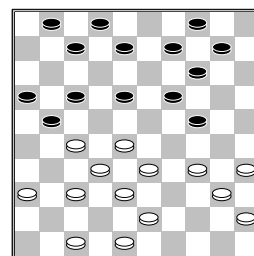


**4.37-32** en na deze zet  
 mogen de spelers op eigen  
 kracht verder. 37-32 komt  
 niet voor in de database.  
 [ Er zijn nog meer  
 varianten maar geef de  
 belangrijkste, die het  
 vaakst voorgekomen is  
 weer. 4.38-33 14-19  
 5.34-30 20-25 6.29x20  
 25x14 7.40-34 12-18  
 8.45-40 7-12 9.43-38  
 16-21 10.31-26 9-13  
 11.33-29 19-23  
 12.37-32 1-7 13.41-37  
 4-9 14.46-41 14-19  
 15.30-24 19x30  
 16.35x24 11-16  
 17.48-43 9-14 18.38-33  
 21-27 19.32x21 16x27  
 20.24-19 13x24 21.29x9  
 3x14 22.37-31 23-28  
 23.33-29 7-11 24.40-35  
 14-20 25.44-40 20-25  
 26.50-45 2-7 27.42-38  
 11-16 28.38-33 10-14  
 29.29-24 14-20  
 30.43-38 20x29  
 31.34x21 16x27  
 32.49-43 met schijfwinst  
 ]  
**4...24x33 5.38x29**

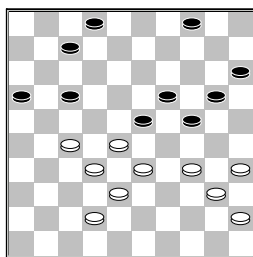


**20-24**  
 [ in de database kwam de  
 volgende variant voor  
 5...14-19 6.29-24  
 20x29 7.34x14 10x19  
 8.41-37 5-10 9.46-41

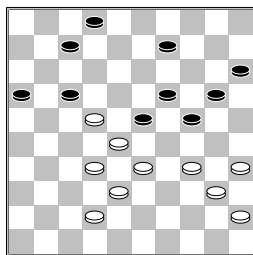
10-14 10.35-30 8-13  
 11.40-35 2-8 12.39-33  
 22-27 13.31x22 17x39  
 14.44x33 later zou deze  
 partij remise worden. ]  
**6.29x20 15x24 7.43-38**  
**14-19 8.49-43 22-27**  
**9.31x22 17x37 10.41x32**  
 nu volgt een lange  
 opbouwfase 10-14  
**11.39-33 8-13 12.44-39**  
**12-18 13.50-44 11-17**  
**14.33-29 24x33 15.39x28**  
**5-10 16.44-39 16-21**  
**17.39-33 19-24 18.46-41**  
**6-11 19.41-37 11-16**  
**20.37-31 13-19 21.31-27**  
**3-8 22.42-37**



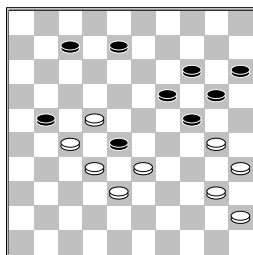
**8-12**  
 [ Mijn gevoel zegt dat  
 de volgende zet logischer  
 is, maar ja wie ben ik  
 22...8-13 en nu half  
 open klassiek spelen en  
 het centrum omsingelen  
 23.43-39 18-22  
 24.27x18 13x22  
 25.34-29 10-15  
 26.29x20 15x24  
 27.28-23 logische zet om  
 het zwarte spel tegen te  
 spelen. 19x28 28.32x23  
 7-12 29.39-34 4-10  
 30.47-42 (30.34-30  
 12-18 31.23x12 17x8  
 32.30x19 14x23  
 33.33-29 23x34  
 34.40x29 met  
 gelijkwaardige stand )  
 30...12-18 31.23x12  
 17x8 met gelijkwaardige  
 stand, geef de voorkeur  
 aan wit vanwege de  
 formaties in de stand. ]  
**23.47-42 10-15 24.37-31**  
**21-26 25.27-22 26x37**  
**26.42x31 18x27 27.31x11**  
**1-6 28.32-27 6x17**  
**29.38-32 9-13 30.43-38**  
**13-18 31.36-31 14-20**  
**32.48-42 18-22 33.27x18**  
**12x23 34.31-27**  
 (diagram)  
**7-11** deze zet van zwart



snap ik niet helemaal.  
 [ logischer lijkt mij de  
 volgende variant  
 >34...4-9 35.27-22

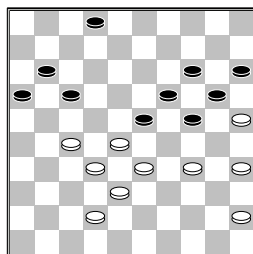


- A)** 35...7-11 36.42-37  
 9-13 37.34-29 23x34  
 38.40x29 24-30  
 39.35x24 19x30  
 40.32-27 20-24  
 41.29x20 15x24  
 42.38-32 17-21  
 43.33-29 24x33  
 44.28x39
- B)** 35...7-12 36.22x11  
 16x7 37.42-37 2-8  
 38.37-31 12-17  
 39.34-30 17-21  
 40.28-22 9-14  
 41.31-27 23-28



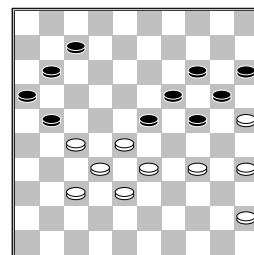
- 42.27x16
- B1)** 42...28x17  
 43.33-28 8-13  
 44.32-27 13-18  
 45.38-32 17-21  
 46.28-22 18-23  
 47.32-28 21x32  
 48.28x37 24-29  
 49.40-34 29x40  
 50.35x44 20-24  
 51.22-17 24x35  
 52.17-11 15-20  
 53.11x2 35-40  
 54.2x15 40x49 met  
 goede kansen voor wit.
- B2)** 42...28x37

- 43.22-17 37-41  
 44.17-11 41-47  
 (44...7-12 45.11-6  
 12-18 46.16-11 18-23  
 47.11-7 23-29 48.6-1  
 41-47 49.1-6 8-12  
 50.7x18 47-36  
 51.6-22 36-41  
 52.22-36 41-37  
 53.18-12 37-26  
 54.12-7 26-21 55.7-2  
 21x25 56.2-16 29x38  
 57.16x49 19-23  
 58.49-44 25-48  
 59.36-41 14-19  
 60.41-36 23-29  
 61.36-22 19-23  
 62.22-4 20-25  
 63.44-6 48-26  
 64.4-27 25-30  
 65.6-50 met een iets  
 betere stand voor wit.  
 ) 45.11x13 19x8  
 46.30x10 15x4  
 47.16-11 47-36  
 48.33-28 36-27  
 49.38-33 20-24  
 50.11-6 27-49  
 51.40-34 49-43  
 52.6-1 43x25 53.1-29  
 25-3 54.29x15 3-14  
 55.15-24 14x41  
 56.24x2 met goede  
 kansen voor wit. ]
- 35.34-30 4-9 36.30-25**  
**9-14 37.40-34**



- 2-7?**  
 [ beter voor zwart is de  
 volgende variant  
 >37...17-21 38.45-40  
 11-17 39.34-30 2-8  
 40.27-22 8-13 41.22x11  
 16x7 42.28-22 24-29  
 43.33x24 20x29  
 44.42-37 21-26  
 45.40-34 29x40  
 46.35x44 7-11 47.44-40  
 15-20 48.40-35 20-24  
 49.32-27 Deze stand komt  
 voor in de database en het  
 gaat verder met 24-29  
 50.37-32 14-20  
 51.25x14 19x10  
 52.38-33 29x38  
 53.32x43 23-29  
 54.30-25 10-14

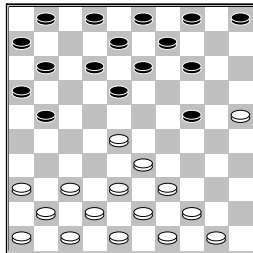
- 55.43-39 13-19  
 56.39-34 29x40  
 57.35x44 19-23  
 58.44-39 11-16  
 59.22-17 16-21  
 60.27x16 26-31  
 61.17-12 31-37 62.12-7  
 37-41 63.7-1 23-28  
 64.1-29 41-47 65.29-15  
 47-36 66.16-11 28-32  
 67.15-42 36-22 met  
 remise als resultaat. ]
- 38.42-37 17-21**



- 39.34-30**  
 [ wit mist nu een zo  
 goed als winnende variant  
 >39.27-22 21-27  
 (39...21-26 40.45-40  
 16-21 41.34-30 11-16  
 42.40-34 7-12 43.22-18  
 21-27 44.18x7 met  
 gewonnen stand voor wit.  
 ) 40.22x31 16-21  
 41.31-27 11-16  
 42.27-22 7-11 43.34-30  
 11-17 44.22x11 16x7  
 45.37-31 21-26  
 46.31-27 7-12 47.45-40  
 12-17 48.40-34 17-21  
 49.27x16 26-31  
 50.34-29 23x34  
 51.30x39 31-36  
 52.16-11 36-41 53.11-6  
 41-47 54.28-22 24-29  
 55.33x13 47x2 56.6-1  
 2-19 57.32-27 20-24  
 58.22-17 19-13  
 59.17-12 (59.27-21?  
 14-20 60.25x14 24-30  
 61.35x24 13x16)  
 59...13x36 60.12-8  
 14-19 61.1-45 36-31  
 62.8-3 ]
- 39...7-12 40.45-40**  
**12-18 41.40-34 24-29**  
**42.33x22 11-17 43.28x10**  
**17x28 44.25x14 15x4**  
**45.32x23 21x41 46.30-24**  
**16-21 47.23-19 41-46**  
**48.38-33 46-37 49.34-30**  
**37-42 50.33-29 42-37**  
**51.30-25 21-27**  
**1-1**

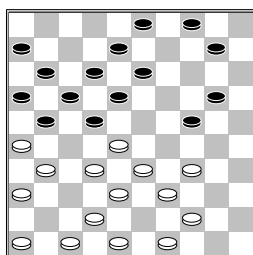
□ Teijn, F. (Frans)  
 ■ Plas, van der, J. (Jack)  
 Nationale Clubcom 13-02-2016

1.32-28 20-24 2.34-30  
 17-21 3.31-26 15-20  
 4.26x17 12x21 5.30-25  
 10-15 6.40-34 24-30  
 7.35x24 20x40 8.45x34  
 7-12 9.34-29 19-24  
 10.29x20 15x24



**11.39-34**

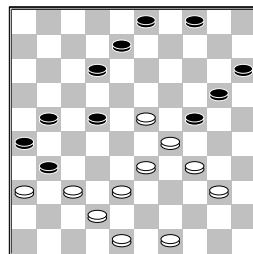
[ In de database bevindt zich de volgende variant  
 11.36-31 21-26  
 12.31-27 1-7 13.28-22  
 5-10 14.33-29 24x33  
 15.38x29 11-17  
 16.22x11 6x17 17.29-23  
 18x29 18.27-22 17x28  
 19.37-31 26x37  
 20.41x34 deze partij eindigde in remise. ]  
 11...11-17 12.44-39  
 18-22 13.36-31 6-11  
 14.31-26 12-18 15.38-32  
 8-12 16.50-44 2-8  
 17.43-38 14-20 18.25x14  
 9x20 19.41-36 1-6  
 20.37-31 5-10



**21.31-27**

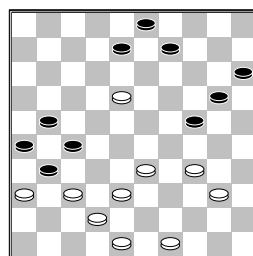
[ Een andere optie voor wit is >21.47-41 21-27  
 22.32x21 16x27  
 23.41-37 11-16  
 24.37-32 20-25  
 25.32x21 16x27  
 26.46-41 10-14  
 27.48-43 14-19  
 28.41-37 24-29  
 29.34x14 27-32  
 30.38x27 13-19  
 31.14x23 18x47 32.27x7  
 8-12 33.7x18 47-29  
 34.28-23 29-15

35.37-32 15-10  
 36.32-28 10-14  
 37.39-33 3-8 38.31-27  
 17-22 39.28x17 14x48  
 40.18-12 4-10 41.12x3  
 10-14 42.3x20 25x14  
 43.17-12 48-30 44.12-7  
 6-11 45.7x16 30-2  
 46.27-22 met een  
 winnende positie voor wit.  
 ]  
 21...22x31 22.36x27  
 17-22 23.28x17 11x31  
 24.26x37 10-15 25.32-28  
 6-11 26.46-41 11-17  
 27.37-32 18-22 28.34-29  
 13-18 29.39-34 22-27  
 30.44-40 18-22 31.41-37  
 21-26 32.32x21 16x27  
 33.28-23 17-21 34.47-41  
 27-31 35.41-36



**22-27**

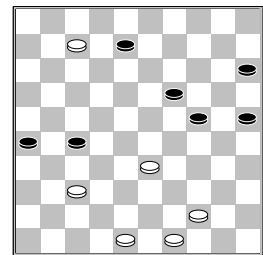
[ iets beter voor zwart is >35...21-27  
 36.40-35 3-9 37.37-32  
 22-28 38.32x21 28x30  
 39.36x27 24x33  
 40.38x29 26x17  
 41.35x24 9-13 42.42-38  
 13-18 43.38-33 en wit staat ook heel goed. ]  
 36.23-18 12x23 37.29x18  
 4-9



**38.40-35**

[ voordeliger voor wit is >38.33-28 20-25  
 39.49-43 24-30  
 40.18-13 8x19 41.28-22  
 27x18 42.36x16 30x39  
 43.43x34 19-24  
 44.34-29 24x33  
 45.38x29 9-14 46.16-11  
 18-22 en wit staat gewonnen. ]  
 38...8-13 39.38-32  
 27x40 40.36x16 13x22

41.35x44 20-25 42.16-11  
 9-13 43.11-7  
 [ 43.11-6 22-27  
 44.42-38 13-18  
 45.38-33 18-23  
 46.49-43 25-30  
 47.43-38 3-8 48.44-40  
 23-29 49.40-35 27-31  
 50.48-42 31-36 51.6-1  
 30-34 52.33-28 8-12  
 53.1x18 26-31 54.37x26  
 36-41 55.18-13 34-40  
 56.35x44 41-46  
 57.13x35 46x23 met  
 goede stand voor wit. ]  
 43...22-27 44.42-38 3-8  
 45.38-33 13-19

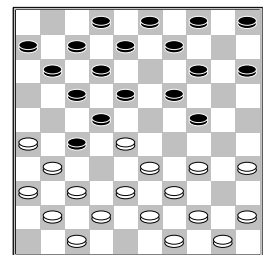


**46.44-39**

[ 46.33-29 24x33  
 47.7-2 8-13 48.2-11  
 33-38 49.11-16 38-42  
 50.16x5 42x31 51.44-40  
 met gewonnen stand voor wit. ]  
 46...8-12 47.7x18 24-30  
 48.18-12 30-34 49.39x30  
 25x34 50.33-29 34x23  
 51.12-8 27-32 52.37x28  
 23x32 53.8-2  
 1-1

□ Kooloos, A.T.M. (Arno)  
 ■ Yigitturk, B. (Berke)  
 Nationale Clubcom 13-02-2016

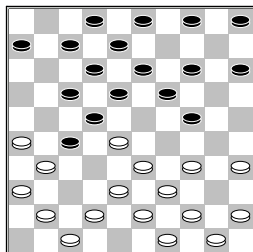
1.32-28 16-21 2.31-26  
 18-22 3.37-32 11-16  
 4.41-37 7-11 5.34-29  
 20-24 6.29x20 15x24  
 7.40-34 1-7 8.46-41  
 13-18 9.37-31 21-27  
 10.32x21 16x27 11.42-37  
 10-15 12.48-42



**9-13**

[ Een andere optie in de diagram stand is

12...8-13 13.37-32  
 17-21? ( in de  
 database zit de volgende  
 variant 13...11-16  
 14.32x21 16x27  
 15.41-37 6-11 16.37-32  
 11-16 17.32x21 16x27  
 18.34-30 7-11 19.47-41  
 2-7 20.30-25 15-20  
 21.45-40 5-10 22.40-34  
 18-23 23.34-30 23x32  
 24.33-29 24x33  
 25.39x37 20-24  
 26.37-32 11-16  
 27.32x21 16x27  
 28.41-37 7-11 29.37-32  
 11-16 30.32x21 16x27  
 31.38-33 24-29  
 32.33x24 12-18  
 33.44-39 18-23  
 34.39-34 23-28 later  
 wint wit de partij. )  
 14.26x8 3x12 15.28x8  
 18-22 16.32x21 22-28  
 17.33x22 24-29  
 18.34x23 19x48 19.8x10  
 5x14 20.35-30 48-42  
 21.30-25 42x24  
 22.43-38 24x42  
 23.47x38 en wit heeft  
 een schijf meer. ]  
**13.37-32 11-16 14.32x21**  
**16x27**

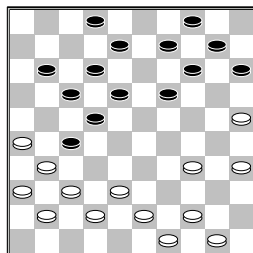


**15.41-37**  
 [ In de database bevindt  
 zicht de volgende variant  
 15.34-30 5-10 16.30-25  
 15-20 17.41-37 6-11  
 18.37-32 11-16  
 19.32x21 16x27  
 20.47-41 10-15  
 21.45-40 7-11 22.41-37  
 24-29 23.33x24 20x29  
 24.37-32 22x33  
 25.39x28 29-34  
 26.32x21 34x45  
 27.42-37 4-10 28.37-32  
 19-23 29.28x19 14x23  
 30.43-39 10-14  
 31.21-16 13-19 32.16x7  
 12x1 33.31-27 15-20  
 34.49-43 20-24  
 35.38-33 1-7 36.33-28  
 8-13 37.27-21 7-12  
 38.32-27 23x32  
 39.27x38 2-7 40.36-31

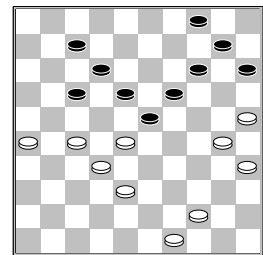
7-11 41.21-16 3-8  
 42.16x7 12x1 43.38-32  
 18-23 44.31-27 13-18  
 45.39-33 8-12 46.44-39  
 1-7 47.43-38 17-22  
 48.27-21 14-20  
 49.25x14 19x10  
 50.32-27 22x31  
 51.26x37 10-14  
 52.38-32 14-20  
 53.37-31 ]

**15...7-11 16.37-32**  
**11-16 17.32x21 16x27**  
**18.34-30**  
 [ in de database bevindt  
 zich de volgende variant  
 18.47-41 3-9 19.34-29  
 5-10 20.29x20 15x24  
 21.41-37 27-32  
 22.38x27 24-29  
 23.33x24 22x33  
 24.39x28 19x30  
 25.35x24 17-22  
 26.28x17 12x41  
 27.36x47 14-19  
 28.45-40 19x30  
 29.40-35 9-14 30.35x24  
 14-19 31.44-40 19x30  
 32.40-35 4-9 33.35x24  
 9-14 34.49-44 14-19  
 35.44-40 19x30  
 36.43-39 30-35  
 37.40-34 13-19 later  
 werd deze partij remise.  
 ]

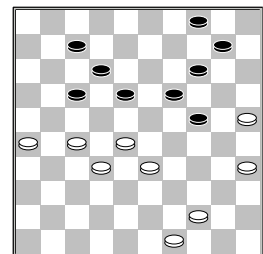
**18...6-11 19.45-40 3-9**  
**20.40-34**  
 [ In de database komt de  
 volgende variant  
 20.30-25 18-23  
 21.47-41 23x32  
 22.33-29 24x33  
 23.39x37 19-23  
 24.37-32 11-16  
 25.32x21 16x27  
 26.43-39 14-19  
 27.39-33 2-7 28.40-34  
 23-28 29.34-30 28x39  
 30.44x33 7-11 31.41-37  
 9-14 32.37-32 13-18  
 33.32x21 8-13 34.33-28  
 22x33 35.38x29 wit  
 wint de partij later ]  
**20...5-10 21.47-41**  
**18-23 22.30-25 23x32**  
**23.33-29 24x33 24.39x37**  
**13-18**



**25.34-30**  
 [ Beter voor wit is  
 >25.34-29 2-7 26.37-32  
 11-16 27.32x21 16x27  
 28.41-37 15-20  
 29.37-32 10-15  
 30.32x21 8-13 31.44-39  
 en wit heeft een gewonnen  
 positie. ]  
**25...18-23 26.37-32**  
**22-28 27.31x33 23-28**  
**28.33x22 17x39 29.44x33**  
**19-23 30.41-37 11-17**  
**31.36-31 12-18 32.50-44**  
**9-13 33.37-32 8-12**  
**34.33-28 13-19 35.31-27**  
**2-7**



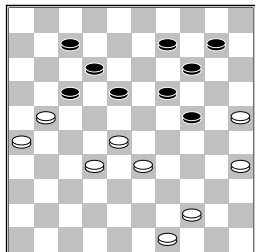
**36.38-33**  
 [ Beter voor wit is  
 >36.30-24 19x30  
 37.35x24 7-11 38.28x19  
 14x23 39.44-39 17-22  
 40.38-33 22x31  
 41.26x37 4-9 42.49-44  
 12-17 43.37-31 9-14  
 44.33-28 11-16  
 45.28x19 14x23  
 46.31-26 17-22  
 47.26-21 16x38  
 48.39-33 38x20 49.25x5  
 23-29 50.5-23 22-27  
 51.23x34 27-32  
 52.34x12 32-37= ]  
**36...15-20 37.33-29**  
**23x34 38.30x39 20-24**  
**39.39-33**



**4-9**  
 [ Zwart mist een  
 winnende variant  
 >39...18-22 40.27x18  
 12x23 41.44-39 4-9  
 (41...23-29 42.32-27  
 29x38 43.28-23 19x28  
 44.27-22 17-21  
 45.22x42 21-27  
 46.39-33 4-9 met goede

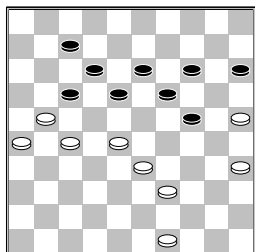
stand voor zwart. )  
 42.39-34 9-13 43.34-29  
 23x34 44.32-27 13-18  
 45.27-21 7-12 46.21-16  
 10-15 47.49-44 met  
 winst. ]

**40.27-21**



**9-13**

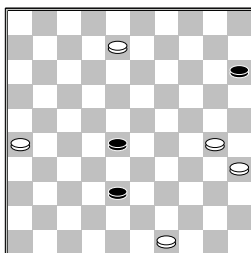
[ beter voor zwart is  
 >40...7-11 41.32-27  
 (41.21-16 10-15  
 42.16x7 12x1 43.32-27  
 18-23 44.27-21 23x32  
 45.21x12 9-13 46.33-28  
 32x23 met goede stand  
 voor zwart. )  
 41...11-16 42.44-39  
 9-13 43.27-22 18x27  
 44.21x32 16-21  
 45.39-34 24-30  
 46.35x24 19x39  
 47.33x44 14-19  
 48.44-39 12-18  
 49.49-44 19-24  
 50.39-33 13-19  
 51.44-40 10-14  
 52.40-34 18-23  
 53.28-22 17x30  
 54.25x34 23-29  
 55.34x23 19x37  
 56.26x17= ]  
**41.32-27 10-15 42.44-39**



**14-20**

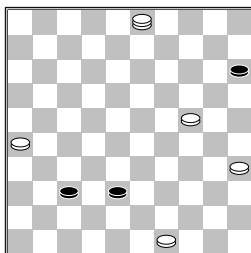
[ beter voor zwart is  
 >42...7-11 43.21-16  
 15-20 44.16x7 12x1  
 45.49-43 18-23  
 46.28-22 17x28  
 47.33x22 13-18  
 48.22x13 19x8 49.26-21  
 1-7 50.21-17 14-19  
 51.25x14 19x10  
 52.43-38 met  
 gelijkwaardige stand ]  
**43.25x23 18x38 44.39-33**  
**38x29 45.27-22 7-11**

**46.21-16 13-19 47.16x18**  
**19-23 48.28x30 17x28**  
**49.18-13 29-33 50.13-8**  
**33-38**



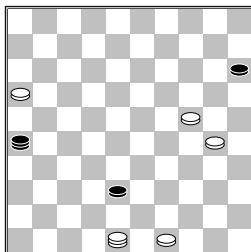
**51.30-24**

[ >51.8-3 38-42  
 52.3-14 42-47 53.14x37  
 47-20 54.30-25 20-24  
 55.37-23 24-33  
 56.35-30 33-17  
 57.30-24 17-22  
 58.26-21 en wit wint.  
 ]  
**51...28-32 52.8-3 32-37**



**53.3-25**

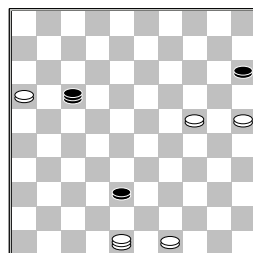
[ Zekere winst voor wit  
 is >53.3-14 38-42  
 54.14x46 42-47  
 55.24-19 47-36  
 56.26-21 36-22  
 57.19-14 22-36  
 58.21-17 36-4 ]  
**53...37-41 54.25-48**  
**41-46 55.26-21 46-28**  
**56.21-16 28-17 57.35-30**  
**17-26**



**58.30-25**

[ Een zekere winst voor  
 wit is >58.48-43 38-42  
 59.43-48 42-47  
 60.30-25 47x20  
 61.25x14 26-17 62.14-9  
 17-22 63.9-4 22-50  
 64.4-36 50-6 65.48-25  
 6-50 ]

**58...26-17**

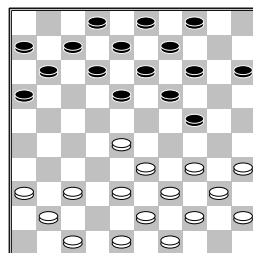


**59.24-19?** nu is het  
 remise

[ Winst is >59.48-43  
 38-42 60.43-48 42-47  
 61.48-30 47x20  
 62.25x14 17-50 63.14-9  
 15-20 64.9-4 20-25  
 65.30-35 50-6 66.4-36  
 ]  
**59...17-26 60.16-11**  
**38-42 61.48x37 26x48**  
**62.11-7 48-37**  
**1-1**

□ Bidesi, R.P. (Roy)  
 ■ Meijer-Kromhout, M.M.  
 Nationale Clubcomp13-02-2016

**1.34-30 20-24 2.30-25**  
**19-23 3.32-28 23x32**  
**4.37x28 14-20 5.25x14**  
**10x19 6.41-37 5-10**  
**7.40-34 10-14 8.45-40**  
**17-21 9.50-45 21-26**  
**10.37-32 26x37 11.32x41**  
**18-23 12.42-37 23x32**  
**13.37x28 12-18 14.41-37**  
**7-12 15.46-41 1-7**



**16.38-32** Deze zet komt  
 niet in de database voor.  
 De onderstaande varianten  
 wel.

[ 16.34-30 16-21  
 17.40-34 21-26  
 18.30-25 11-17  
 19.34-30 7-11 20.39-34  
 17-22 21.28x17 11x22  
 22.48-42 22-27  
 23.44-40 2-7 24.33-28  
 18-22 25.28x17 12x21  
 26.38-33 6-11 27.34-29  
 11-16 28.29x20 15x24  
 29.42-38 13-18  
 30.25-20 14x34  
 31.40x20 8-13 32.35-30

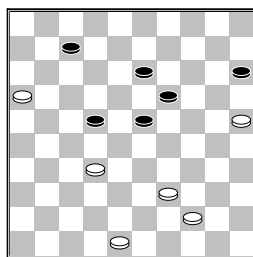


7-12 33.20-15 12-17  
 34.33-29 18-23  
 35.29x18 13x22  
 36.45-40 9-14 37.36-31  
 (37.40-35? 4-10  
 38.15x4 22-28 39.4x31  
 28-32) 37...27x36  
 38.40-34 en zwart wint  
 later. ]  
 [ 16.34-29 14-20  
 17.28-22 18x27  
 18.29-23 19x28  
 19.33x31 12-18  
 20.40-34 13-19  
 21.38-33 7-12 22.37-32  
 8-13 23.41-37 2-8  
 24.43-38 9-14 25.47-42  
 4-9 26.34-29 20-25  
 27.29x20 15x24  
 28.33-28 18-23  
 29.39-33 12-17  
 30.44-39 17-21  
 31.31-27 13-18  
 32.49-44 9-13 33.44-40  
 8-12 34.39-34 23-29  
 35.34x23 18x29  
 36.37-31 25-30  
 37.31-26 3-8 38.26x17  
 11x31 39.36x27 30-34  
 40.42-37 6-11 41.27-21  
 16x27 42.32x21 14-20  
 43.35-30 24x44  
 44.33x15 en tot remise  
 beloten ]  
**16...16-21 17.43-38**  
**21-26 18.49-43 18-23**  
**19.36-31 12-18 20.41-36**  
**7-12 21.47-42 11-17**  
**22.31-27 14-20 23.34-29**  
**23x34 24.40x29 20-25**  
**25.29x20 25x14 26.35-30**  
**4-10 27.30-25 18-23**  
**28.27-22 12-18 29.22x11**  
**6x17 30.37-31 26x37**  
**31.42x31 15-20 32.31-27**  
**8-12 33.36-31 10-15**  
**34.31-26 2-7 35.27-22**  
**18x27 36.32x21 23x32**  
**37.38x27 13-18 38.33-28**  
**20-24 39.45-40 7-11**  
**40.21-16 3-8 41.16x7**  
**12x1 42.43-38 8-12**  
**43.38-33 9-13 44.28-22**  
**17x28 45.33x22 19-23**  
**46.26-21 14-19 47.21-16**  
**1-7 48.40-35 24-29**  
**49.27-21 18x27 50.21x32**  
**12-18 51.44-40 18-22**  
**52.40-34 29x40 53.35x44**

(diagram)

**22-28**

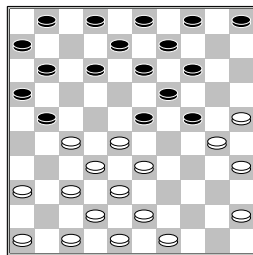
[ Een andere optie is  
 >53...15-20 54.25x14  
 19x10 55.44-40 13-19  
 56.48-42 10-14



57.42-37 22-28  
 58.40-35 19-24  
 59.39-34 24-29  
 60.32-27 (60.34-30?  
 28-33 en zwart staat  
 gewonnen ) 60...29x40  
 61.35x44 14-19  
 62.27-21 met  
 gelijkwaardige stand. ]  
**54.32-27 28-33 55.39x28**  
**23x21 56.16x27 13-18**  
**57.44-39**  
**1-1**

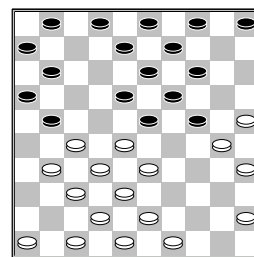
□ Hol, W.H.G. (Gera)  
 ■ Giphart, J. (Hans)  
 Nationale Clubcom13-02-2016

**1.32-28 20-25 2.37-32**  
**14-20 3.41-37 10-14**  
**4.34-30 25x34 5.39x30**  
**20-25 6.44-39 25x34**  
**7.39x30 15-20 8.50-44**  
**20-24 9.44-39 18-23**  
**10.40-34 12-18 11.30-25**  
**7-12 12.34-29 23x34**  
**13.39x30 18-23 14.31-27**  
**17-21**



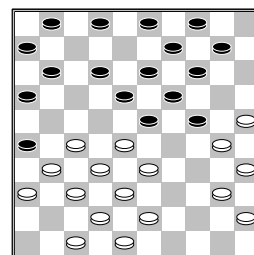
**15.36-31**

[ De volgende variant  
 bevindt zich in de  
 database 15.37-31  
 21-26 16.27-22 26x37  
 17.32x41 23x32  
 18.38x27 12-17  
 19.43-39 17x28  
 20.33x22 8-12 21.41-37  
 11-17 22.22x11 6x17  
 23.39-33 13-18  
 24.42-38 17-21  
 25.37-32 18-23  
 26.47-42 9-13 27.49-43  
 12-18 28.33-28 2-7  
 29.43-39 7-12 30.36-31  
 5-10 later zou wit deze  
 partij winnen. ]  
**15...12-18**

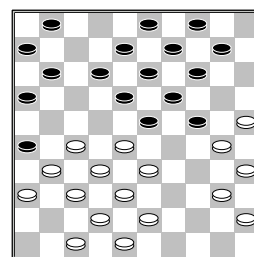


**16.46-41**

[ Als ik de witspeler  
 was zou ik de volgende zet  
 zeker gespeeld hebben.  
 16.31-26 mijn zet met  
 zwart zou zijn geweest  
 11-17 17.46-41 17-22  
 18.26x17 22x11  
 19.41-36 1-7 20.49-44  
 7-12 21.44-40 5-10  
 22.43-39 11-17  
 23.39-34 10-15  
 24.37-31 met een leuke  
 stand. ]  
**16...21-26 17.41-36**  
**8-12 18.49-44 5-10**  
**19.44-40**



**2-8**



[ Deze zet mag zwart nu  
 niet spelen, het begint  
 mij nu te dagen waarom ik  
 in de partij tegen Gé 4-10  
 heb gespeeld, dat was om  
 op dit moment dus 12-17  
 zonder probleem te kunnen  
 spelen. 19...12-17?  
 20.33-29 24x22  
 21.25-20 14x34  
 22.40x29 23x34  
 23.27-21 16x27 24.32x5  
 ]

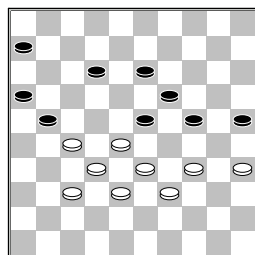
**20.43-39**

[ In de database komt de  
 volgende stand voor en  
 toen werd er gespeeld

20.27-22 18x27  
 21.31x22 11-17  
 22.22x11 16x7 23.36-31  
 13-18 24.31-27 9-13  
 25.43-39 10-15  
 26.27-22 18x27  
 27.32x21 23x34  
 28.40x18 remise gegeven.  
 ]

[ Deze stand heb ik al een op het bord gehad, althans dat dacht ik. Na de partij realiseerde ik mij dat schijf 4 nog op 5 stond in die stand. Maar dat maakt niets uit voor de variant die nu volgt  
 20.40-34 12-17  
 21.47-41 ( Dit speelde Ge Berdee tegen mij met schijf 4 op 5 21.34-29 23x34 22.30x39 24-29 23.33x24 19x30 24.25x34 18-22 25.27x18 13x44 26.43-39 44x33 27.38x29 met schijfwinst. )  
 21...10-15 22.27-22 18x27 23.32x12 8x17 24.45-40 23x32 25.38x27 met zeer goede stand voor zwart ]

20...10-15 21.39-34  
 14-20 22.25x14 9x20  
 23.30-25 4-9 24.25x14 9x20 25.34-29 23x34  
 26.40x29 20-25 27.29x20 15x24 28.27-22 18x27  
 29.31x22 12-18 30.37-31 26x37 31.42x31 18x27  
 32.31x22 11-17 mijn idee in deze partij is om een podkowa op het bord te krijgen om van het "hangende" centrum te profiteren. 33.22x11 6x17 34.36-31 13-18 35.31-27 17-21 om 26 onder controle te kijken. 36.48-43 8-13 37.43-39 3-8 38.47-42 8-12 39.42-37 18-23 40.45-40 1-6 41.40-34



6-11  
 [ Achteraf was deze

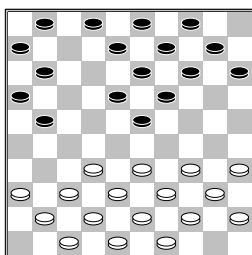
variant beter. Ik had mij verrekend in de partij variant en dat kwam er op neer dat ik de remise moest maken met een schijf meer. >41...21-26 deze was beter dan de partij zet 42.28-22 ( wit kan nu niet offeren door 42.35-30 24x35 43.33-29 wegens 19-24 44.28x17 24x11 uit. ) 42...13-18 43.22x13 19x8 44.35-30 24x35 45.33-28 23-29 46.34x23 25-30 47.38-33 35-40 48.23-18 12x23 49.28x19 30-34 50.39x30 40-44 51.19-14 44-49 52.30-25 49-40 53.27-22 40-23 54.14-9 23-1 met een remise stand. ]

42.35-30 24x35 43.33-29 13-18 44.29-24 19x30 45.28x19 11-17 46.37-31! Deze zet

volledig onderschat, op het moment dat is 06-11 speelde. Na 10 minuten rekenen en herrekenen de remise gevonden. Dus verder met de volgende zetten reeks 21-26 47.38-33 26x28 48.33x13 17-21 49.13-9 21x32 50.9-3 16-21 51.3x26 32-38 52.19-13 35-40 53.34x45 30-34 54.39x30 25x34 Deze stand is 12 keer voorgekomen in de data base en 12 keer remise!  
 1-1

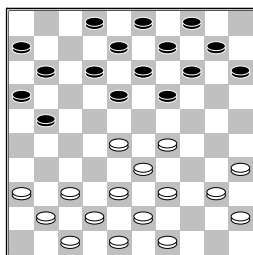
□ Lodder, P. (Piet)  
 ■ Boom, D. (Daniël)  
 Nationale Clubcom 13-02-2016

1.34-29 19-23 2.39-34  
 14-19 3.44-39 19-24  
 4.50-44 10-14 5.31-26  
 14-19 6.37-31 5-10  
 7.41-37 20-25 8.29x20  
 25x14 9.46-41 17-21  
 10.26x17 12x21 11.31-26  
 7-12 12.26x17 12x21



13.34-29  
 [ 13.35-30 15-20  
 14.30-25 10-15  
 A) 15.36-31 21-26  
 16.31-27 1-7 17.33-28  
 7-12 18.41-36 11-17  
 19.38-33 20-24  
 20.34-29 23x34  
 21.40x20 15x24  
 22.42-38 17-21  
 23.27-22 18x27  
 24.28-23 19x28  
 25.33x31 later wint wit deze partij.  
 B) 15.32-28 23x32  
 16.37x28 1-7 17.41-37  
 7-12 18.38-32 11-17  
 19.42-38 18-22  
 20.47-42 13-18  
 21.34-29 20-24  
 22.29x20 15x24  
 23.40-34 24-30  
 24.34-29 30-35  
 25.29-23 18x29  
 26.33x13 22x33  
 27.39x28 9x18 later werd deze partij remise.  
 C) 15.34-29 23x34  
 16.40x29  
 C1) 16...21-26  
 17.32-28 16-21  
 18.28-22 18x27  
 19.29-23 19x28  
 20.33x31 later werd deze partij remise.  
 C2) 16...1-7  
 17.44-40 7-12  
 18.40-35 11-17  
 19.29-24 19x30  
 20.25x34 13-19  
 (20...14-19 21.49-44 9-14 22.44-40 4-9  
 23.32-28 21-26  
 24.34-30 17-22  
 25.28x17 12x21  
 26.33-28 8-12  
 27.30-25 2-7  
 28.40-34 7-11  
 29.39-33 12-17  
 30.37-32 18-23  
 31.42-37 20-24  
 32.47-42 13-18  
 33.36-31 9-13  
 34.41-36 3-9  
 35.25-20 14x25  
 36.34-29 23x34  
 37.28-22 17x39  
 38.38-33 39x28  
 39.32x3) 21.49-44  
 9-13 22.44-40 4-9  
 23.32-28 21-26  
 24.37-32 18-23  
 25.34-29 23x34  
 26.40x29 17-21  
 27.41-37 2-7  
 28.37-31 26x37  
 29.32x41 ]

13...23x34 14.40x29 1-7  
15.44-40 7-12 16.32-28



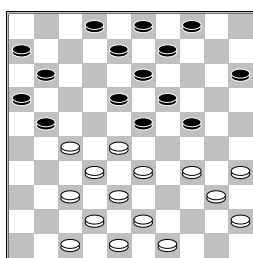
19-24

[ Deze variant komt voor in de database

16...11-17 17.38-32  
21-26 18.42-38 17-21  
19.36-31 19-23  
20.28x19 14x34  
21.40x29 12-17  
22.32-28 17-22  
23.28x17 21x12  
24.38-32 10-14  
25.32-28 6-11 26.43-38  
11-17 27.47-42 17-22  
28.28x17 12x21  
29.49-43 18-22  
30.41-36 13-18  
31.45-40 8-13 32.39-34  
14-19 33.35-30 9-14  
34.29-24 19-23  
35.40-35 14-20  
36.33-29 4-9 37.43-39  
2-8 38.39-33 20-25  
39.48-43 23-28  
40.43-39 18-23  
41.29x27 21x41  
42.36x47 26x48  
43.33x22 en zwart wint.

]

17.29x20 15x24 18.37-32  
14-19 19.41-37 18-23  
20.39-34 10-15 21.36-31  
12-18 22.31-27

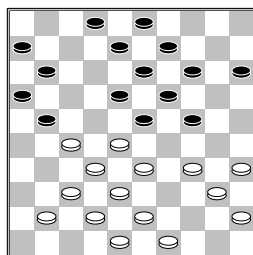


4-10

[ Deze stand komt voor in de database, het ging verder op de volgende manier 22...8-12

23.34-30 4-10 24.30-25  
10-14 25.27-22 18x27  
26.33-29 24x22  
27.37-31 27x36  
28.32-28 23x32 29.38x7  
21-27 30.25-20 14x25  
31.7-1 19-24 en zwart

wint de partij. ]  
23.47-41 10-14

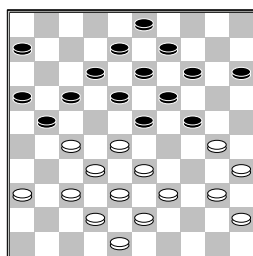


24.34-30

[ De volgende variant komt voor in de database

24.34-29 23x34  
25.40x20 15x24  
26.43-39 18-23  
27.49-44 2-7 28.44-40  
7-12 29.41-36 21-26  
30.39-34 12-18  
31.37-31 26x37  
32.42x31 8-12 33.34-30  
11-17 34.31-26 3-8  
35.36-31 23-29  
36.30-25 18-23  
37.48-43 12-18  
38.40-34 29x40  
39.35x44 23-29  
40.44-40 8-12 41.43-39  
18-23 42.40-35 29-34  
43.39x30 12-18  
44.45-40 23-29  
45.28-23 19x37 46.30x8  
37-41 47.33x24 41-47  
48.38-32 47x15 49.8-2  
15-10 50.40-34 10-5  
51.25-20 14x25  
52.34-30 5x46 53.2-7  
25x34 54.7x40 9-14  
met remise. ]

24...2-7 25.49-44 7-12  
26.44-39 11-17 27.41-36



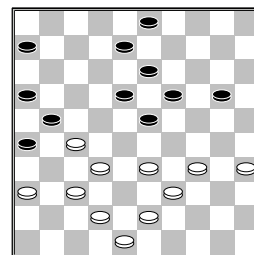
14-20

[ De volgende variant komt voor in de database

27...21-26 28.30-25  
17-21 29.40-34 14-20  
30.25x14 9x20 31.34-30  
20-25 32.39-34 12-17  
33.34-29 25x34  
34.29x40 17-22  
35.28x17 21x12  
36.33-28 15-20  
37.43-39 20-25  
38.37-31 26x37

39.42x31 3-9 40.48-42  
24-29 41.39-34 9-14  
42.42-37 6-11 43.35-30  
11-17 44.30-24 19x39  
45.28x10 29-33  
46.38x29 39-43 47.10-4  
43-49 48.40-35 17-21  
49.29-23 18x29 50.4x34  
12-17 51.34-39 en  
zwart gaf op. ]

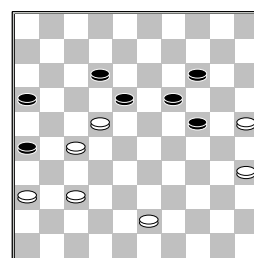
28.30-25 21-26 29.25x14  
9x20 30.40-34 24-29  
31.33x24 20x40 32.45x34  
17-22 33.28x17 12x21  
34.38-33 15-20



35.34-30

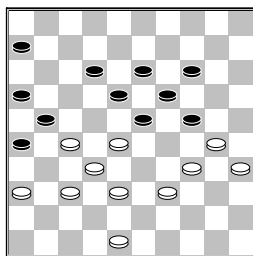
[ In de database bevindt zich de volgende variant

35.33-28 3-9 36.39-33  
20-24 37.42-38 8-12  
38.34-30 12-17  
39.43-39 17-22  
40.28x17 21x12  
41.33-28 6-11 42.30-25  
9-14 43.48-43 11-17  
44.39-33 17-21  
45.43-39 12-17  
46.39-34 17-22  
47.28x17 21x12  
48.33-28 23-29  
49.34x23 18x29  
50.38-33 29x38  
51.32x43 13-18  
52.28-22



12-17 53.22x13 19x8  
54.43-38 14-19  
55.37-32 17-21  
56.38-33 8-13 57.33-28  
13-18 58.35-30 24x35  
59.25-20 35-40  
60.20-15 40-44  
61.15-10 44-49 62.10-5  
18-23 63.5-10 49-43  
64.28-22 43-25  
65.22-18 23x12 66.10x1  
25-14 67.27-22 14x46

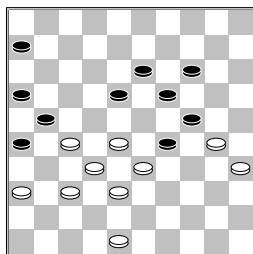
met remise. ]  
**35...20-24 36.39-34**  
**8-12 37.33-28 3-9**  
**38.43-39 9-14 39.42-38**



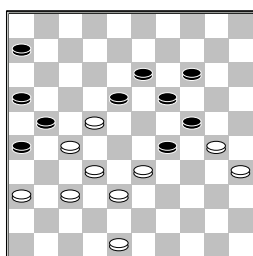
**23-29**

[ In de database bevindt zich de volgende partij  
 >39...12-17 40.39-33  
 17-22 41.28x17 21x12  
 42.33-28 6-11 43.48-43  
 11-17 44.43-39 17-21  
 45.30-25 12-17  
 46.39-33 17-22  
 47.28x17 21x12  
 48.33-28 23-29  
 49.34x23 18x29  
 50.38-33 29x38  
 51.32x43 13-18  
 52.28-22 zie analyse  
 variant bij zet 34 van wit. ]

**40.34x23 18x29 41.39-33**  
**12-18**

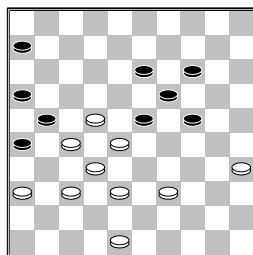


**42.28-22**



[ Direct winst voor wit is >42.28-23 19x39  
 43.30x10 26-31  
 (43...39-44 44.37-31  
 26x28 45.10-5 21x43  
 46.5x12) 44.37x17  
 39-44 45.10-4 44-50  
 46.48-43 50x11  
 47.43-39 11x44  
 48.32-28 44x31

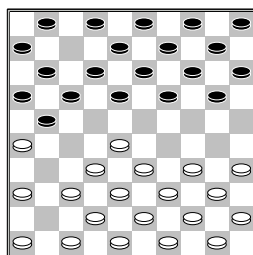
49.36x27 18-23 50.4x22  
 29-34 ]  
**42...18-23**  
 [ Een hardnekkigere verdediging geeft de volgende variant  
 >42...6-11 43.33-28  
 29-34 44.30x39 24-30  
 45.35x24 19x30  
 46.38-33 30-35  
 47.39-34 26-31 48.37x6  
 16-21 49.27x16 18x40  
 50.6-1 40-45 51.28-22  
 35-40 52.16-11 ]  
**43.33-28 29-34 44.30x39**



**23-29**

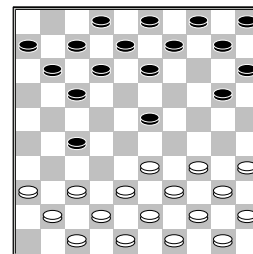
[ Betere verdediging voor zwart is  
 >44...14-20 45.48-43  
 20-25 46.39-33 23-29  
 47.36-31 13-18  
 48.22x13 19x8 49.28-22  
 29-34 50.43-39 34x43  
 51.38x49 25-30  
 52.49-43 30-34  
 53.22-18 6-11 54.33-28  
 ]  
**45.48-43 14-20 46.39-34**  
**29x40 47.35x44 24-29**  
**48.43-39 19-24 49.39-33**  
**20-25 50.44-40 25-30**  
**51.40-35 13-19 52.36-31**  
**6-11 53.22-18 11-17**  
**54.27-22 19-23 55.28x19**  
**17x39 56.18-12 24x13**  
**57.35x44**  
**2-0**

☐ Mul,N.M. (Nico)  
 ■ Dee,van,H. (Hein)  
 Nationale Clubcomp13-02-2016  
**1.32-28 17-21 2.31-26**  
**12-17 3.37-32 7-12**  
**4.41-37**



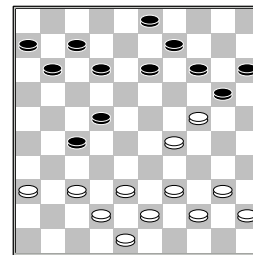
**1-7**

[ gebruikelijker in deze stand is 4...19-23  
 5.28x19 14x23 6.46-41  
 21-27 7.32x21 16x27  
 met een goede aanval voor zwart. ]  
**5.37-31 18-22 6.31-27**  
**22x31 7.26x37 19-23**  
**8.28x19 14x23 9.46-41**  
**21-27 10.32x21 16x27**



**11.33-28**

[ In de database komt de volgende variant voor  
 11.34-29 23x34  
 12.39x30 13-18  
 13.44-39 9-13 14.50-44  
 4-9 15.40-34 20-25  
 16.44-40 10-14  
 17.30-24 14-19  
 18.49-44 19x30  
 19.35x24 11-16  
 20.34-29 7-11 21.37-32  
 27-31 22.36x27 13-19  
 23.24x4 15-20 24.4x22  
 17x46 25.33-28 46x34  
 26.40x29 later wint wit de partij. ]  
**11...23x32 12.37x28**  
**13-18 13.38-32 27x38**  
**14.43x32 9-13 15.41-37**  
**4-9 16.49-43 10-14**  
**17.42-38 5-10 18.47-42**  
**14-19 19.39-33 10-14**  
**20.44-39 17-22 21.28x17**  
**11x22 22.50-44 7-11**  
**23.37-31 2-7 24.32-27**  
**19-23 25.31-26 22x31**  
**26.26x37 23-28 27.33x22**  
**18x27 28.34-29 12-18**  
**29.35-30 8-12 30.30-24**  
**18-22**



**31.40-34??**

[ Gelijkwaardig is  
 >31.38-33 11-17  
 32.33-28 22x33  
 33.39x28 27-32

34.28-23 32x41  
35.36x47 13-18  
36.40-34 9-13 37.44-39  
7-11 38.45-40 13-19  
39.24x22 17x19 ]  
**31...27-31 32.36x18**  
**12x23 33.29x18 20x49**  
**0-2**