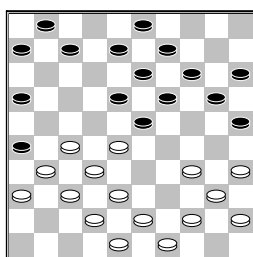


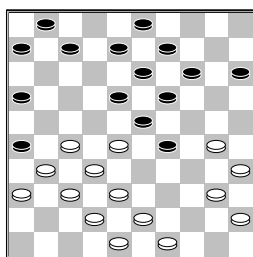
Majeed, T. (Talha)
 Giphart, J. (Hans)
 Nationale Clubcom 03-10-2015

1.32-28 20-25 2.37-32
 14-20 3.41-37 10-14
 4.46-41 5-10 5.31-27
 19-23 6.28x19 14x23
 7.33-28 9-14 8.28x19
 14x23 9.39-33 10-14
 10.44-39 13-19 11.50-44
 17-21 12.36-31 8-13
 13.33-28 21-26 14.41-36
 2-8 15.38-33 12-17
 16.42-38 17-22 17.28x17
 11x22 18.47-42 4-9
 19.33-28 22x33 20.39x28



7-12

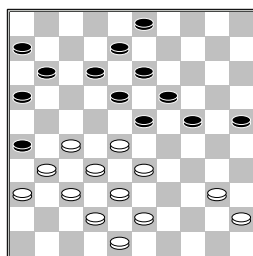
[In deze stand is volgens de database enkele keren voor 20...20-24
 21.44-39 24-29
 22.34-30 25x34
 23.39x30



7-12

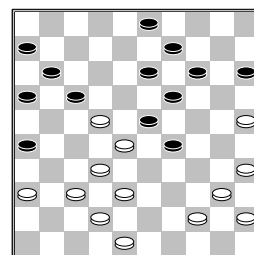
A) 24.40-34 29x40
 25.35x44 15-20
 26.43-39 20-24
 27.30-25 1-7 28.44-40
 7-11 29.49-43 14-20
 30.25x14 9x20
A1) 31.40-35 20-25
 32.45-40 3-9
 33.39-33 24-30
 34.35x24 19x30
 35.28x19 13x24
 36.32-28 9-13
 37.40-34 30x39
 38.33x44 13-19
 39.38-32 18-23
 40.42-38 23-29
 41.43-39 24-30
 42.27-22 8-13
 43.31-27 29-34
 44.48-43 12-18

45.36-31 30-35
 46.39x30 25x34
 47.43-39 34x43
 48.38x49 11-17
 49.22x11 16x7
 50.49-43 7-12
 51.43-39 6-11
 52.39-34 19-24
 53.34-30 24-29
 54.30-25 29-34
 55.25-20 34-40
 56.44-39 40-45
 57.20-15 45-50
 58.39-34 50x17
 59.15-10 18-23
 60.27-21 13-18
 61.10-4
A2) 31.39-33 20-25



A2a) 32.43-39 11-17
 33.27-21 16x27
 34.31x11 6x17
 35.37-31 26x37
 36.42x31 24-29
 37.33x24 19x30
 38.28x19 13x24
 39.38-33 18-23
 40.40-34 12-18
 41.33-28 8-12
 42.28x19 24x13
 43.48-43 3-9
 44.43-38 9-14
 45.38-33 14-19
 46.32-28 17-21
 47.31-26 12-17
 48.34-29 19-24
 49.29x20 25x14
 50.45-40 14-19
 51.36-31 18-22
 52.40-35 21-27
 53.35x24 27x36
 54.24-20 19-24
 55.20x29 17-21
 56.26x17 22x11
 57.28-23 36-41
 58.23-19 13x24
 59.29x20 41-46
 60.39-34 46-37
 61.20-15 37-14
 62.34-29 11-17
 63.29-23 14x50
 64.15-10
A2b) 32.27-22 18x27
 33.31x22 12-18
 34.37-31 26x37
 35.42x31 18x27

36.31x22 11-17
 37.22x11 16x7
 38.36-31 8-12
 39.43-39 12-17
 40.31-27 7-11
 41.48-43 11-16
 42.40-34 17-21
 43.45-40 21-26
 44.40-35 6-11
 45.34-30 (45.27-22
 11-17 46.22x11 16x7
 47.28-22 24-30
 48.35x24 19x30
 49.32-28 23x32
 50.38x27 7-11
 51.33-29 3-8
 52.29-23 8-12
 53.34-29 11-16
 54.43-38 30-35
 55.39-34 25-30
 56.34x25 35-40
 57.38-33 40-44
 58.23-19 13x24
 59.29x20 44-50
 60.33-29 50x17
 61.20-14 17-21
 62.27-22 21-38
 63.29-23 38-20
 64.14-10 20-9
 65.23-18 12x23
 66.10-5) 45...25x34
 46.39x30 3-8
B) 24.49-44 1-7
 25.30-25 18-22
 26.27x18 13x33
 27.43-39 8-13
 28.39x28 12-17
 29.31-27 7-11
 30.27-22



B1) 30...17-21
 31.35-30 11-17
 32.22x11 6x17
 33.37-31 (33.40-35
 17-22 34.28x17 21x12
 35.44-39 16-21
 36.36-31 12-17
 37.30-24 29x20
 38.31-27) 33...26x37
 34.42x31
B2) 30...16-21
 31.35-30 11-16
 32.22x11 6x17
 33.37-31 (33.40-35
 17-22 34.28x17 21x12
 35.44-39 16-21

36.36-31 12-17
 37.30-24 29x20
 38.31-27 13-18
 39.27x16 18-22
 40.45-40 9-13
 41.40-34 3-8
 42.34-30 8-12
 43.38-33 20-24
 44.42-38 13-18
 45.48-42 15-20
 46.39-34 23-28
 47.32x23 18x40
 48.35x44 24x35
 49.44-39 12-18
 50.39-34 19-23
 51.37-32 14-19
 52.25x14 19x10
 53.33-28 22x33
 54.38x29 26-31
 55.29-24 10-15
 56.42-38 31-36)
 33...26x37 34.42x31

B2a) 34...21-26

35.48-43 26x37
 36.32x41 23x32
 37.38x27 19-23
 38.41-37 29-34
 39.40x18 13x42

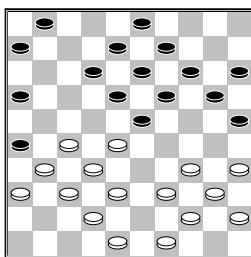
B2b) 34...29-34

35.40x18 13x42
 36.48x37 15-20
 37.45-40 20-24
 38.40-35 17-22
 39.31-26 21-27
 40.32x21 16x27
 41.36-31 27x36
 42.26-21 22-27
 43.21x32 9-13
 44.32-27 3-8
 45.27-22 8-12
 46.44-39 24-29
 47.39-34 29x40
 48.35x44 19-23
 49.30-24 14-19
 50.22-18 13x22
 51.24x13 23-29
 52.13-9 29-34
 53.9-4 22-27
 54.4x31 36x27
 55.25-20 12-18
 56.20-14 18-23
 57.14-9 23-28
 58.9-3 27-31
 (58...28-33 59.3-25
 33-39 60.44x33
 34-40 61.25-39
 40-45 62.39-50)
 59.37x26 28-33
 60.3-25 33-39
 61.44x33 34-40
 62.25-39 40-45
 63.39-50]

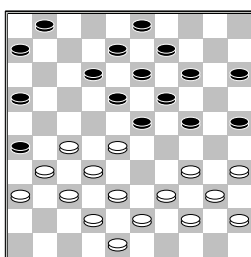
21.43-39

(diagram)

6-11



[21...1-7 22.49-43
 (22.48-43 7-11
 23.34-29 23x34
 24.40x29 25-30
 25.35x24 19x30
 26.38-33 30-35
 27.42-38 14-19
 28.45-40 20-25
 29.39-34) 22...20-24
 23.34-30 25x34
 24.40x20 15x24]
 [21...20-24 22.49-43

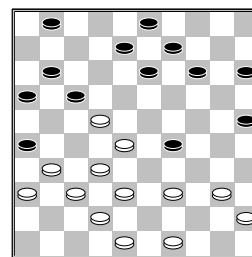


A) 22...24-29
 23.34-30 25x34
 24.39x30 1-7 25.30-25
 18-22 26.27x18 13x33
 27.43-39 8-13
 28.39x28 12-17
 29.31-27
B) 22...1-7 23.34-30
 25x34 24.40x20 15x24
 25.39-34 23-29
 (25...24-29 26.44-39
 29x40 27.35x44 14-20
 28.45-40 7-11
 29.40-34 20-24
 30.44-40 11-17
 31.27-21 16x27
 32.31x11 6x17
 33.40-35 24-29
 34.36-31 29x40
 35.35x44) 26.34x23
 18x29
C) 22...14-20
 23.34-30 25x34
 24.39x30]
22.39-33 23-29 23.34x23
18x29 24.33x24 19x30
25.35x24 20x29 26.27-22
12-17 27.44-39

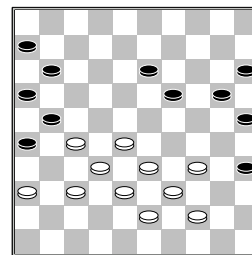
(diagram)

8-12

[Deze stand heeft zich
 1 maal eerder voor gedaan



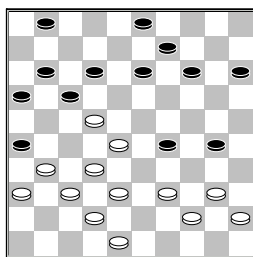
in de Turbodatabase
 database het ging toen
 verder op de volgende
 manier 27...14-19
 28.31-27 1-6 29.49-44
 9-14 30.40-35 14-20
 31.44-40 19-24
 32.40-34 29x40
 33.35x44 13-19
 34.28-23 19x28
 35.22x33 17-21
 36.45-40 8-13 37.40-34
 24-30 38.48-43 13-19
 39.33-28 3-8 40.38-33
 8-13 41.42-38 30-35



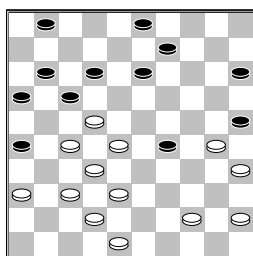
A) 42.44-40 35x44
 43.39x50 20-24
 44.34-29 25-30
 45.29x20 15x24
 46.28-22 19-23
 47.33-28 23-29
 48.43-39 26-31
 49.37x17 13-18
 50.22x13 11x42
 51.13-9 42-48 52.9-3
 48x34 53.27-22 29-33
 54.50-44 6-11 55.3-26
 34-1 56.22-17 11x22
 57.32-27 22x31
 58.26x15
B) 42.28-23 19x28
 43.33x22 11-17
 44.22x11 6x17
 45.38-33
B1) 45...13-18
 46.37-31 26x28
 47.33x13 21x32
B2) 45...13-19
 46.33-28 19-24
 (46...20-24 47.28-22
 17x28 48.32x14 21x41
 49.36x47) 47.34-30
 25x34 48.39x19]

28.49-44 25-30

(diagram)



29.31-27
 [29.39-33 30-35
 30.33x24 14-20
 31.24-19 (31.48-43
 20x29 32.43-39 15-20
 33.31-27 12-18
 34.39-34 18-23 35.28x8
 3x12 36.34x23 17x19)
 31...13x24 32.22-18
 12x23 33.28x30 35x24
]
 29...14-20 30.40-35
 30-34 31.39x30 20-25

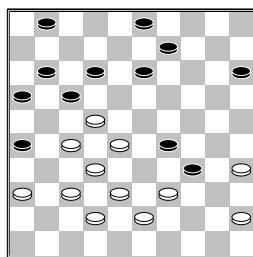


32.48-43?
 [32.30-24 29x20
 33.44-40 25-30
 34.35x24 20x29
 35.40-34 29x40
 36.45x34 12-18
 37.48-43 9-14 38.34-29
 1-6 39.29-24 14-20
 40.24-19 13x24
 41.22x13 24-30
 42.27-21 16x27
 43.32x12 11-17
 44.12x21 26x17
 45.43-39 20-25
 46.38-32 30-34
 47.39x30 25x34
 48.28-22 17x28
 49.32x23 6-11 50.23-18
 11-17 51.13-9 3x14
 52.18-13 14-19
 53.13x24 34-40
 54.24-19 40-44
 55.19-13 44-50
 56.42-38 50-28
 57.38-32 28-39 58.13-8
 39-48]

32...25x34 33.44-39

(diagram)

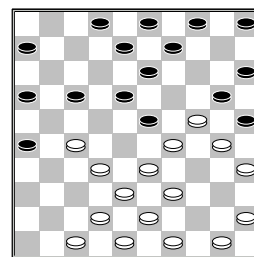
15-20??
 [>33...26-31 34.39x30
 13-19 35.37x26 19-23
 36.28x19 17x39 winst



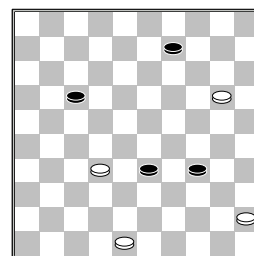
] 34.39x30 20-25 35.30-24
 29x20 36.45-40 12-18
 37.40-34 26-31 38.37x26
 18-23 39.28x8 17x30
 40.35x15 3x12 41.15-10
 9-14 42.10x19 25-30
 43.19-14 30-34 44.14-9
 34-40 45.9-3 12-18
 46.3-20 18-23 47.20-14
 23-29 48.14-28 1-6
 49.26-21 40-45 50.28-50
 29-34 51.36-31?
 [>51.38-33! 34-40
 52.36-31 40-44
 53.50x39 45-50
 54.39-48 50x37
 55.48x31]
 51...34-40?
 [Remise is
 >51...11-17 52.21x12
 6-11 53.50x6 45-50
 54.6-1 50-6 55.12-8
 (55.12-7 34-40 56.7-2
 40-44 57.38-32 44-49)
 55...6-17 56.1x45 17x3
 57.45-23 3-25
 (57...3-26 58.23-37
 26-21 59.38-32 21-8
 60.32-28 8-13 61.28-23
 16-21 62.27x16 13x36)
 58.38-32 25-20
 59.27-22 16-21
 60.22-18 20-9 61.18-12
 9x36]
 52.31-26 40-44 53.50x28
 11-17 54.21x12 45-50
 55.28-41
 2-0 (0.58/0.05)

□ Bhajan,A.K. (Ashok)
 ■ Lodder,P. (Piet)
 Nationale Clubcomp03-10-2015

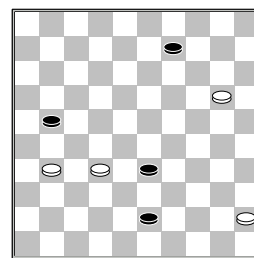
1.32-28 17-21 2.31-26
 19-23 3.26x17 12x21
 4.28x19 14x23 5.35-30
 10-14 6.33-29 7-12
 7.40-35 20-25 8.30-24
 14-20 9.36-31 21-26
 10.31-27 11-17 11.39-33
 17-22 12.41-36 22x31
 13.36x27 12-17 14.46-41
 6-11 15.44-39 1-6
 16.41-36 17-22 17.37-32
 22x31 18.36x27 11-17
 19.34-30
 23x34



[Op 19...25x34
 volgt 20.39x30 23x25
 21.33-28 20x29
 22.27-21 16x27
 23.32x34 en wit heeft
 een makkelijkere stand]
 20.33-28 20x29 21.27-21
 16x27 22.32x23 29x18
 23.39-33 34-39 24.43x34
 13-19 25.49-43 15-20
 26.38-32 5-10 27.43-38
 10-15 28.47-41 9-13
 29.41-37 4-9 30.32-27
 2-7 31.37-32 7-11
 32.50-44 20-24 33.44-40
 11-17 34.27-21 18-23
 35.21x12 8x17 36.34-29
 23x34 37.40x20 15x24
 38.32-27 25x34 39.27-21
 6-11 40.21x12 11-17
 41.12x21 26x17 42.38-32
 13-18 43.32-27 3-8
 44.42-37 8-13 45.37-32
 24-29 46.33x24 19x30
 47.35x24 18-22 48.27x18
 13x33 49.24-20

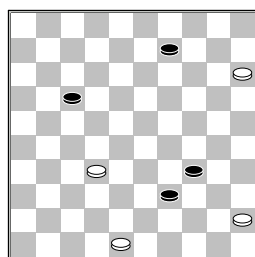


33-39? lijkt logisch
 [wit mist winst via
 49...17-21 50.48-42
 34-39 51.42-37
 (51.45-40 39-43
 52.40-35 43-49)
 51...39-43 52.37-31



43-48
 A) 53.31-27 48-25
 54.27x16 25x46

55.16-11 46-23
 56.11-6 23-1 57.45-40
 1x45 58.6-1 9-13
B) 53.20-15 48x26
 54.45-40 (54.32-27
 21x32 55.15-10 9-14
 56.10x19 26-3
 57.45-40 32-37
 58.40-35 37-41
 59.35-30 41-46)
 54...9-14]
50.20-15



39-44

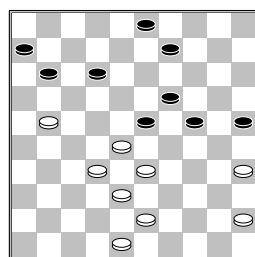
[Beter voor zwart was
 >50...9-14 51.32-28
 39-44 52.28-23 44-49
 (52...44-50 53.23-19
 14x23 54.15-10 23-29)
 53.23-19 14x23
 54.15-10 23-28 55.10-4
 17-21 56.4-9 28-33
 57.9-20 33-39 58.20-25
 21-27
A) 59.48-42 27-31
 60.42-38 49x16
 61.45-40 34x45
 62.25x26
B) 59.25-9 27-32
B1) 60.9-22 49-44
 61.48-43 39x48
 62.22x50
B2) 60.9-14 32-38
 61.14-28 49-44
 62.28-10 38-43
 63.10-32 43-49
 64.32-16 44-35
 65.48-42 (65.16-11
 34-40 66.45x43 49x2)
]

51.15-10
1-1 (0.10/0.15)

□ **Vroom, H.H.J. (Herman)**
 ■ **Diakite, L. (Lamine)**
 Nationale Clubcomj03-10-2015

1.32-28 16-21 2.37-32
21-26 3.34-29 26x37
4.42x31 11-16 5.47-42
7-11 6.40-34 1-7
7.45-40 20-24 8.29x20
15x24 9.41-37 18-23
10.31-27 17-21 11.50-45
10-15 12.34-29 23x34
13.40x20 15x24 14.44-40
21-26 15.40-34 5-10
16.49-44 12-18 17.34-29

10-15 18.29x20 15x24
19.37-31 26x37 20.42x31
7-12 21.46-41 18-23
22.41-37 4-10 23.44-40
12-18 24.39-34 10-15
25.34-29 23x34 26.40x20
14x25 27.27-21 16x27
28.31x22 18x27 29.32x21
15-20 30.21-16 20-24
31.16x7 2x11 32.37-32
8-12 33.36-31 13-18
34.31-27 18-23 35.27-21

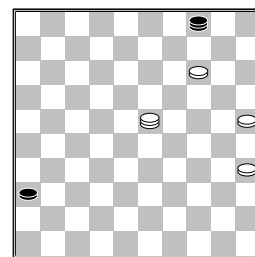


11-17??

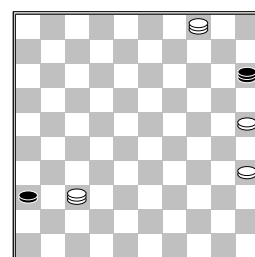
[Beter voor zwart is:
 >35...9-13 36.32-27
 23x32 37.21-16 32x21
 38.16x9 3x14 39.45-40
 6-11 40.40-34 21-27
 41.34-29 14-20
 42.43-39 27-31
 43.48-42 31-36
 44.42-37 11-16
 45.29-23 19x28
 46.33x22 16-21
 47.38-33 21-26
 48.22-17 26-31
 49.37x26 36-41
 50.17-11 41-46
 (50...41-47? 51.11-6
 47x29 52.6-1) 51.11-7
 46-5 52.7-1 25-30
 53.1-45 30-34 54.39x19
 5x39]

36.48-42 17x26 37.33-29
24x22 38.32-28 23x32
39.38x7 6-11 40.7x16
26-31 41.16-11 31-36
42.42-37 9-13 43.11-7
13-18 44.43-38 3-8
45.38-32 19-24 46.32-28
24-29 47.45-40 18-23
48.28x19 29-33 49.7-1
33-38 50.1-34 8-12
51.34x7 38-43 52.7-2?

wit mist nu de winst
 [>52.40-34 25-30
 53.34x25 43-48
 54.19-14 48x31 55.7-23
 31-4
 (diagram)
 Deze stand komt voor in de
 database van Turbodatabase.
 geeft aan winst voor wit
 56.23-46 4-31 57.14-10



31-4 58.10-5 4-15
 59.46-37 15-24 60.5-10
 24-15 61.10-4



15-47 (61...15-29
 62.4-15 29-34 63.15-47
 34-12 64.25-20 12-26
 65.37-48 26-12
 66.20-14 12-23 67.14-9
 23-46 68.9-4 46-5
 69.35-30 5-19 70.30-25
 19-14 71.48-26 14-19
 72.25-20 19-5 73.4-27
 5-28 74.20-15 28-5
 75.27-16 5-46 76.47-38
 46-5 77.38-27 36-41
 78.15-10 5x21
 79.16x46) 62.4-15]

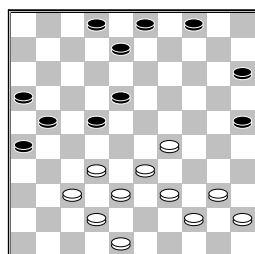
52...25-30 53.35x24
43-48
1-1 (1.00/1.51)
 □ **Tholel, F.J. (Francis)**
 ■ **Groot, de, G.J. (Gerard)**
 Nationale Clubcomj03-10-2015

1.34-29 17-22 2.40-34
 11-17 3.45-40 6-11
 4.32-28 19-23 5.28x19
 14x23 6.35-30 10-14
 7.30-24 22-28 8.33x22
 18x27 9.31x22 17x28
 10.29x18 12x23 11.36-31
 20x29 12.31-27 14-19
 13.38-33 29x38 14.42x22
 7-12 15.37-31 12-18
 16.31-26 5-10 17.41-37
 10-14 18.43-38 15-20
 19.40-35 20-24 20.34-30
 8-12 21.46-41 1-6
 22.41-36 2-8 23.48-43
 12-17 24.38-33 17x28
 25.33x22 8-12 26.43-38
 12-17 27.27-21 17x28
 28.38-33 16x27 29.33x31
 11-17 30.37-32 24-29
 31.49-43 4-10 32.50-45
 10-15 33.47-42 29-34

34.30-24 19x30 35.35x24
 14-20 36.39x30 20x29
 37.44-39 3-8 38.30-25
 8-12 39.42-38 9-14
 40.45-40 15-20 41.39-34
 20-24 42.32-28 23x32
 43.34x23 18x29 44.38x27
 29-33 45.27-21 13-18
 46.31-27 14-19 47.21-16
 19-23 48.27-21 17-22
 49.36-31 24-30 50.25x34
 33-39 51.43-38 39x30
 52.40-35 30-34 53.38-33
 23-28 54.33-29 34x23
 55.35-30 28-33 56.30-24
 33-39 57.24-20 39-44
 58.20-14 44-49 59.14-9
 23-28 60.21-17 22x11
 61.16x7 12x1 62.9-3
 28-33 63.3-25 49-16
 64.25-30 18-23 65.30-35
 23-29
 0-2

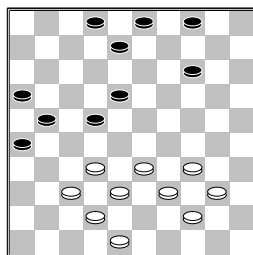
□ Yigitturk, B. (Berke)
 ■ Jagram, S. (Soelinder)
 Nationale Clubcom03-10-2015

1.34-30 20-25 2.30-24
 19x30 3.35x24 17-21
 4.32-28 21-26 5.33-29
 11-17 6.38-33 7-11
 7.37-32 26x37 8.42x31
 14-20 9.43-38 1-7
 10.47-42 17-21 11.41-37
 21-26 12.31-27 10-14
 13.49-43 11-17 14.29-23
 20x29 15.23x34 17-21
 16.34-29 7-11 17.39-34
 5-10 18.43-39 14-20
 19.29-24 20x29 20.33x24
 12-17 21.39-33 17-22
 22.28x17 11x31 23.36x27
 10-14 24.46-41 6-11
 25.44-39 11-17 26.50-44
 17-22 27.41-36 22x31
 28.36x27 18-22 29.27x18
 13x22 30.34-29 14-19
 31.24x13 9x18

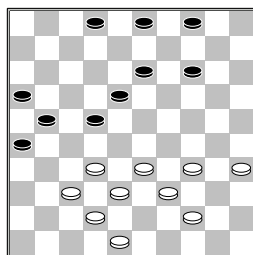


32.40-34
 [wit staat makkelijker
 maar niet beter, met de
 tekstzet krijg wit het
 moeilijker. De volgende
 variant is probleemloos
 voor wit 32.32-28
 22-27 (Na

32...18-23 33.29x27
 21x34 34.40x29 gaat
 wit een poging wagen om
 meer dan 1 punt te halen
) 33.37-32 18-22
 34.28x17 21x12
 35.32x21 26x17
 36.29-24 4-9 37.42-37
 9-14 38.37-31 16-21
 39.48-42 12-18
 40.38-32 8-13 41.31-26
 18-22 42.42-38 14-19
 43.40-35 19x30
 44.35x24 3-8 45.39-34
 13-19 46.24x13 8x19
 47.45-40 19-24
 48.34-29 2-8 49.29x20
 15x24 50.40-34 8-13
 51.44-39 24-30
 52.33-29 30-35
 53.29-23 22-28
 54.23-18 28x37 55.18x9
]
32...15-20 33.45-40
 20-24 34.29x20 25x14



35.40-35
 [35.32-28 22-27
 36.37-32 3-9 37.34-29
 18-22 38.28x17 21x12
 39.32x21 26x17
 40.33-28 16-21
 41.39-33 8-13 42.42-37
 met gelijkwaardige stand.
]
35...8-13

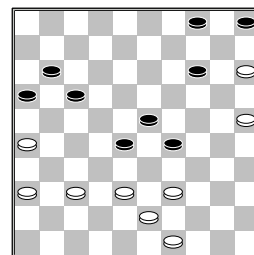


36.34-30
 [probleemloos voor wit
 is de volgende variant:
 36.33-28 22x33
 37.39x28 14-19
 38.37-31 26x37
 39.32x41 19-24
 40.38-33 2-8 41.44-39
 8-12 42.34-29 3-8
 43.29x20 18-23
 44.28x19 13x15

45.33-29]
36...21-27 37.32x21
 16x27 38.37-32 26-31
 39.32x21 31-37 40.42x31
 22-28 41.33x22 18x36
 42.21-16 2-7 43.39-33
 36-41 44.30-24 41-47
 45.44-40 47-36 46.40-34
 36-18 47.34-30 7-11
 48.16x7 18x1 49.33-28
 13-18
 0-2

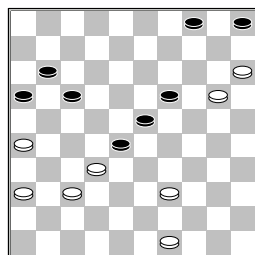
□ Fung, I. (Iwan)
 ■ Bidesi, R.P. (Roy)
 Nationale Clubcom03-10-2015

1.32-28 18-23 2.33-29
 23x32 3.37x28 17-22
 4.28x17 12x21 5.39-33
 7-12 6.44-39 1-7
 7.31-26 20-24 8.26x17
 12x21 9.29x20 15x24
 10.36-31 7-12 11.31-26
 13-18 12.26x17 12x21
 13.50-44 11-17 14.41-37
 8-12 15.46-41 21-26
 16.34-30 17-21 17.40-34
 2-7 18.30-25 7-11
 19.44-40 12-17 20.41-36
 18-22 21.34-30 22-28
 22.33x22 17x28 23.25-20
 14x34 24.40x20 28-32
 25.37x28 26-31 26.36x27
 21x23 27.20-15 10-14
 28.35-30 11-17 29.42-37
 6-11 30.37-31 9-13
 31.45-40 3-9 32.48-42
 13-18 33.40-34 9-13
 34.31-26 18-22 35.30-24
 19x30 36.34x25 13-19
 37.47-41 22-28 38.42-37
 19-24 39.41-36 24-29



40.37-31
 [wit kunnen winnen via
 >40.38-33 29x38
 41.43x32
A) 41...16-21
 42.49-43 11-16
 43.43-38 5-10
 44.38-33 17-22
 45.26x17 22x11
 46.33x22 11-17
 47.22x11 16x7
 48.36-31 7-12
 49.39-33
B) 41...14-19

42.25-20



B1) 42...17-22
 43.36-31 11-17
 44.20-14 19x10
 45.32-27 23-29
 46.27x18 29-33
 47.18-13 33x44
 48.49x40 28-33
 49.13-9 4x13 50.15x4
 13-19 51.4-27
B2) 42...16-21
 43.49-44 11-16
 44.36-31 17-22
 45.26x17 22x11
 46.31-27 11-17
 47.27-22 28-33
 48.22x11 16x7
 49.39x28 23-29
 50.28-22 19-24
 51.22-18 24-30
 52.20-14 29-34
 53.15-10 4x15
 54.14-9 30-35 55.9-4
 7-11 (55...34-40
 56.37-31 40x49
 57.31-26 49x13
 58.4x1) 56.32-28
 15-20 57.28-22 11-16
 58.18-13 34-39
 (58...34-40 59.22-17
 40x49 60.17-11 16x7
 61.37-32 49x9
 62.4x1) 59.44x33
 35-40 60.33-28 40-45
 61.13-8 45-50 62.8-2
 (62.8-3) 62...50-45
 63.22-17 20-25
 64.4-15 45-34
 65.37-31 34-39
 66.15-33 39-48
 67.31-26 16-21
 68.33-39 21x12
 (68...48x34 69.2-30
 21x12 70.30x48)
 69.39-34 48x30
 70.2x35]
40...14-19 41.38-32
28x37 42.31x42 19-24
43.25-20 5-10 44.36-31
24-30 45.31-27 30-35
46.49-44 17-22 47.27x18
23x12 48.43-38 11-17
49.38-32 12-18 50.42-37
18-22 51.32-28 22x33
52.39x28 16-21 53.28-22

17x28 54.26x17 29-34
55.17-12 28-33 56.12-7
34-40 57.7-2 40x49
58.20-14 10x19 59.2x47
1-1 (/0.43)

□ **Teijn, F. (Frans)**
 ■ **Jharap, R. (Radjinder)**
 Nationale Clubcomp03-10-2015

1.32-28 18-22 2.37-32
 12-18 3.41-37 7-12
 4.34-30 1-7 5.30-25
 19-23 6.28x19 14x23
 7.25x14 10x19 8.35-30
 5-10 9.40-34 10-14
 10.45-40 22-27 11.31x22
 18x27 12.32x21 17x26
 13.46-41 11-17 14.37-32
 17-21 15.41-37 12-18
 16.33-29 7-12 17.40-35
 12-17 18.30-24 19x30
 19.35x24 14-19 20.38-33
 19x30 21.34x25 23x34
 22.39x30 9-14 23.44-39
 4-9 24.33-29 13-19
 25.30-24 19x30 26.25x34
 8-13 27.34-30 14-20
 28.30-25 17-22 29.25x14
 9x20 30.42-38 2-8
 31.38-33 21-27 32.32x21
 16x27 33.37-32 27x38
 34.43x32 8-12 35.50-44
 22-27 36.32x21 26x17
 37.48-42 17-22 38.42-37
 3-9 39.37-32 22-28
 40.33x22 18x38 41.39-33
 13-19 42.33x42 9-13
 43.42-38 13-18 44.44-39
 6-11 45.36-31 20-24
 46.29x20 15x24 47.47-42
 19-23 48.42-37 18-22
 49.49-44 23-29 50.37-32
 24-30 51.31-26 30-35
 52.32-27 22x31 53.26x37
 11-17 54.38-32 17-21
 55.37-31 21-26 56.31-27
 12-17
1-1 (0.48/)

□ **Dee, van, H. (Hein)**
 ■ **Jahani, R. (Ramdew)**
 Nationale Clubcomp03-10-2015

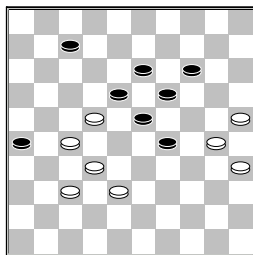
1.34-29 19-23 2.40-34
 14-19 3.45-40 19-24
 4.32-28 23x32 5.37x28
 17-22 6.28x17 12x21
 7.50-45 7-12 8.31-26
 11-17 9.41-37 6-11
 10.37-32 21-27 11.32x21
 16x27 12.42-37 2-7
 13.46-41 1-6 14.38-32
 27x38 15.43x32 17-22
 16.37-31 22-28 17.32x23
 20-25 18.29x20 18x38
 19.41-37 25x14 20.48-42
 15-20 21.42x33 20-24

22.47-42 13-18 23.49-43
 9-13 24.34-30 3-9
 25.30x19 13x24 26.40-34
 9-13 27.34-30 4-9
 28.30x19 13x24 29.45-40
 9-13 30.40-34 14-20
 31.37-32 10-15 32.42-38
 5-10 33.34-30 20-25
 34.30x19 13x24 35.39-34
 10-14 36.44-39 14-19
 37.34-30 25x34 38.39x30
 15-20 39.30-25 18-23
 40.25x14 19x10 41.43-39
 23-29 42.31-27 8-13
 43.27-21 12-18 44.21-16
 24-30 45.33x24 30x19
 46.26-21 10-14 47.38-33
 7-12 48.16x7 12x1
 49.21-16 1-7 50.39-34
 14-20 51.36-31 20-25
 52.31-27 19-24 53.27-21
 6-11 54.32-28 7-12
 55.16x7 12x1 56.34-29
 13-19 57.29x20 25x14
 58.33-29 14-20
1-1

□ **Banarsi, M. (Radijnder)**
 ■ **Bremmer, W. (Wim)**
 Nationale Clubcomp03-10-2015

1.34-30 18-22 2.30-25
12-18 3.31-27 22x31
4.36x27 7-12 5.40-34
17-21 6.33-28 11-17
7.39-33 21-26 8.44-39
19-23 9.28x19 14x23
10.25x14 10x19 11.33-28
17-22 12.28x17 12x21
13.39-33 5-10 14.33-28
10-14 15.34-30 15-20
16.30-25 8-12 17.43-39
12-17 18.39-33 20-24
19.41-36 6-11 20.49-44
1-6 21.37-31 26x37
22.42x31 21-26 23.47-42
26x37 24.42x31 2-8
25.44-39 4-10 26.45-40
10-15 27.50-45 8-12
28.40-34 3-8 29.34-30
23-29 30.39-34 29x40
31.45x34 17-22 32.28x17
12x21 33.27-22 18x27
34.31x22 11-17 35.22x11
16x7 36.36-31 13-18
37.48-42 8-13 38.46-41
21-26 39.41-37 7-12
40.34-29 6-11 41.29x20
15x24 42.31-27 11-16
43.32-28 18-23 44.37-32
13-18 45.28-22 9-13
46.42-37 12-17 47.22x11
16x7 48.33-28 24-29
49.28-22

(diagram)



7-12

[49...7-11 50.38-33
 29x38 51.32x43 23-29
 52.43-39 19-23
 53.39-34 29x40
 54.35x44 23-29
 55.44-40 29-33
 56.30-24 33-39
 57.24-19 14x23

A) 58.25-20 39-43
 59.20-15 43-49
 60.40-35

B) 58.40-34 39x30
 59.25x34 11-16
 60.34-30 23-29
 61.30-25 29-33 (in
 de TDAM database komt de
 volgende zetten reeks
 voor 61...29-34
 62.37-31 26x37
 63.27-21=) 62.37-31
 26x37 63.27-21=]

50.38-33

[>50.22-17 12x21
 51.27x16 18-22
 52.38-33 29x27
 53.30-24 19x30
 54.35x24 14-19
 55.24-20 23-28
 56.20-15 27-32
 57.15-10 32x41 58.10-4
 13-18 59.4-10 19-23
 60.25-20]

50...29x38 51.32x43
23-28 52.22x33 14-20
53.25x23 18x49 54.30-24
49x16 55.24-20 26-31
56.37x26 16-32
0-2 (0.14/0.25)

Baksoellah,B. (Bas)

Haan,den,R. (René)

Nationale Clubcom 03-10-2015

1.32-28 18-23 2.33-29
 23x32 3.37x28 17-22
 4.28x17 11x22 5.41-37
 12-18 6.46-41 7-12
 7.38-32 1-7 8.43-38
 19-23 9.49-43 14-19
 10.39-33 7-11 11.44-39
 10-14 12.50-44 5-10
 13.29-24 20x29 14.33x24
 19x30 15.34x25 14-19
 16.39-33 10-14 17.44-39
 14-20 18.25x14 9x20
 19.39-34 4-9 20.31-27
 22x31 21.36x27 12-17

22.41-36 8-12 23.33-28
 9-14 24.34-30 2-8
 25.30-25 17-22 26.28x17
 11x31 27.36x27 6-11
 28.43-39 11-17 29.47-41
 17-21 30.39-33 23-29
 31.33x24 20x29 32.48-43
 19-23 33.40-34 29x40
 34.35x44 14-19 35.44-39
 23-29 36.45-40 19-23
 37.40-35 3-9 38.39-33
 9-14 39.33x24 14-20
 40.25x14 23-28 41.32x23
 18x9

1-1 (0.08/0.12)