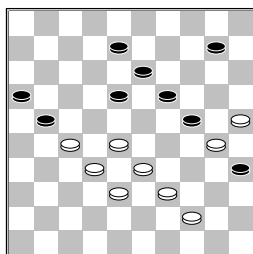
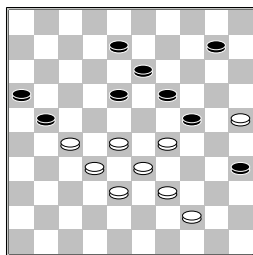


Groot,de,G.J. (Gerard)
 Holkamp,R. (Ruud)
 Nationale Clubcompl9-09-2015

1.32-28 19-23 2.28x19
 14x23 3.37-32 10-14
 4.41-37 14-19 5.46-41
 5-10 6.35-30 10-14
 7.30-25 17-21 8.31-26
 20-24 9.26x17 12x21
 10.34-29 23x34 11.40x20
 15x24 12.32-28 7-12
 13.45-40 1-7 14.40-34
 24-30 15.37-32 30-35
 16.42-37 18-23 17.47-42
 21-26 18.36-31 16-21
 19.41-36 11-16 20.33-29
 12-17 21.29x18 13x33
 22.39x28 8-13 23.43-39
 7-11 24.31-27 2-8
 25.39-33 17-22 26.27x18
 13x22 27.28x17 11x22
 28.32-28 9-13 29.28x17
 21x12 30.33-28 12-17
 31.37-32 13-18 32.44-39
 4-10 33.39-33 16-21
 34.36-31 26x37 35.42x31
 6-11 36.31-26 11-16
 37.48-42 3-9 38.49-44
 9-13 39.42-37 17-22
 40.26x17 22x11 41.37-31
 11-17 42.44-39 17-21
 43.31-27 19-24 44.50-44
 14-19 45.34-30



[>45.34-29



A) 45...21-26
 46.29x20 19-23
 47.28x19 13x15
 48.33-28 8-13
 49.39-33 13-19
 50.33-29 10-14
 51.44-39 18-22
 (51...15-20 52.39-33

19-24 53.28-23 35-40
 54.23x12 40-44
 55.12-7 44-50 56.7-2
 50x36 57.2x35 36-18
 58.35-24 18x45
 59.24x15) 52.27x18
 35-40 53.29-24 19x30
 54.25x45 26-31
 55.18-12 31-36
 56.12-7 36-41 57.7-1
B) 45...10-15
 46.29x20 15x24
 47.39-34 18-23
 48.34-30 21-26
 49.28-22 8-12
 (49...16-21 50.27x16
 26-31 51.22-17 31-36
 52.16-11 36-41
 53.11-6 23-29
 54.32-27 19-23
 55.30x28 41-47
 56.33x24 47x31
 57.6-1) 50.33-28
 12-17 51.22x11 16x7
 52.25-20 24x15
 53.30-24 19x30
 54.28x8 30-34
 55.44-39 34x43
 56.38x49 7-12 57.8x17
 35-40]
 45...18-23 46.39-34
 1-1

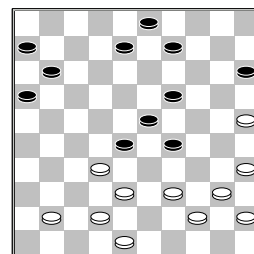
Teer,P. (Paul)
 Lodder,P. (Piet)
 Nationale Clubcompl9-09-2015

1.33-28 18-22 2.38-33
 12-18 3.32-27 19-23
 4.28x19 14x23 5.34-29
 23x34 6.39x30 13-19
 7.37-32 17-21 8.44-39
 10-14 9.50-44 9-13
 10.30-25 21-26 11.32-28
 26x37 12.41x32 22x31
 13.36x27 7-12 14.43-38
 11-17 15.46-41 1-7
 16.40-34 7-11 17.41-36
 4-10 18.36-31 19-23
 19.28x19 14x23 20.25x14
 10x19 21.33-28 5-10
 22.39-33 10-14 23.44-39
 17-22 24.28x17 11x22
 25.31-26 22x31 26.26x37
 12-17 27.49-43 17-22
 28.47-41 2-7 29.32-28
 23x32 30.37x17 7-12
 31.33-29 12x21 32.29-24
 19x30 33.35x24 21-27
 34.42-37 6-11 35.45-40
 16-21 36.34-29 21-26
 37.39-33 3-9 38.43-39
 11-17 39.40-35 14-20
 40.37-32 17-22 41.32x21
 26x17 42.35-30 17-21
 43.30-25 9-14 44.38-32
 21-27 45.32x21 22-28

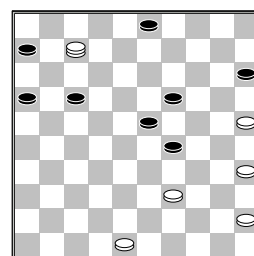
46.33x22 18x16 47.39-33
 8-12 48.33-28 16-21
 49.41-36 21-27 50.48-42
 12-17 51.42-38 17-21
 52.38-33 13-18 53.28-23
 18-22 54.24-19 27-32
 55.19x10 15x4 56.25x14
 32-37 57.36-31 37x26
 58.23-19 22-28
 1-1

Bremmer,W. (Wim)
 Rijs,W.H. (Wout)
 Nationale Clubcompl9-09-2015

1.33-29 19-23 2.35-30
 14-19 3.40-35 20-24
 4.29x20 15x24 5.30-25
 10-14 6.34-30 5-10
 7.45-40 10-15 8.32-28
 23x32 9.37x28 18-23
 10.42-37 23x32 11.37x28
 12-18 12.41-37 7-12
 13.39-33 17-22 14.28x17
 12x21 15.31-26 18-23
 16.26x17 11x22 17.44-39
 13-18 18.46-41 8-13
 19.47-42 6-11 20.49-44
 1-6 21.50-45 2-8
 22.37-31 14-20 23.25x14
 9x20 24.31-27 22x31
 25.36x27 4-9 26.38-32
 24-29 27.33x24 20x29
 28.30-25 18-22 29.27x18
 13x22 30.43-38 22-28



31.42-37
 [>31.39-34 28x46
 32.42-37 46x30 33.35x2
 11-17 34.2-7 9-13
 35.40-35 13-19
 36.44-39

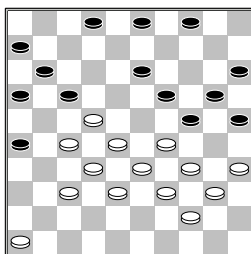
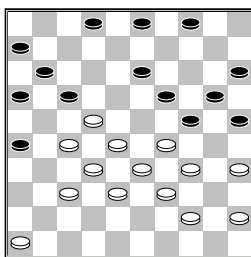


A) 36...3-8 37.25-20
 15x24 38.39-33 29x38
 39.7x20 38-43
 40.48x39 19-24

41.20x11 6x17
B) 36...29-33 37.7x47
 19-24 38.47x20 15x24
 39.39-34 17-22
 40.34-30 22-27
 41.30x19 27-31
 42.48-42 16-21
 43.19-14 21-26
 44.14-10 31-37
 45.42x31 26x37
 46.10-5 37-42
 47.25-20 42-47
 48.20-15 47-36
 49.5-14 36-4 50.14-28
 3-8 51.28-19 8-12
 52.35-30 12-17
 53.45-40 17-21
 54.30-24 21-26
 55.19-23 (55.24-20
 4-9 56.19-14 9-3
 57.15-10 26-31
 58.10-5 31-37
 59.14x46 3x25)
 55...26-31 56.24-19
 6-11 57.19-14 11-16
 58.14-10 31-36
 59.10-5]
31...8-13 32.39-34
 11-17 33.44-39 6-11
 34.48-42 9-14 35.35-30
 3-8 36.39-33 28x39
 37.34x43 13-18 38.40-35
 14-20 39.25x14 19x10
 40.30-25 17-22 41.35-30
 10-14 42.43-39 8-12
 43.32-27 22x31 44.37x26
 23-28 45.39-34 29x40
 46.45x34 11-17 47.38-33
 28x39 48.34x43 15-20
 49.43-39 16-21 50.42-38
 21-27 51.39-33 17-22
 1-1

☐ Ruiter,de,J. (Jan)
 ■ Teijn,F. (Frans)
 Nationale Clubcompl9-09-2015

1.34-29 19-23 2.33-28
 23x34 3.40x29 17-21
 4.38-33 21-26 5.42-38
 11-17 6.47-42 7-11
 7.45-40 1-7 8.40-34
 20-24 9.29x20 15x24
 10.50-45 13-19 11.44-40
 8-13 12.32-27 18-23
 13.37-32 26x37 14.42x31
 17-21 15.34-29 23x34
 16.40x20 14x25 17.49-44
 21-26 18.41-37 10-14
 19.39-34 5-10 20.43-39
 10-15 21.48-43 12-18
 22.27-22 18x27 23.31x22
 7-12 24.36-31 12-17
 25.31-27 14-20 26.33-29
 19-24 27.38-33 13-19
 28.43-38 9-13
 29.45-40



[Wit had beter
 >29.37-31 kunnen spelen
 26x37 30.32x41 17-21
 31.38-32 4-9 32.41-36
 2-8 33.36-31 21-26
 34.45-40 26x37
 35.32x41 met
 gelijkwaardige stand]
29...2-8

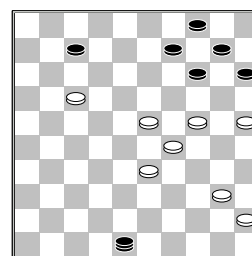
[Beter voor zwart is
 >29...4-9 30.46-41
 (30.29-23? 16-21
 31.27x7 2x11 32.23x14
 13-19 33.14x23 26-31
 34.37x26 17-21
 35.26x17 24-29
 36.33x24 20x27
 37.32x21 11x42)
 30...9-14 nu loopt wit
 vast 31.41-36 17-21
 32.36-31 13-18
 33.22x13 19x8 34.28-23
 2-7 en wit moet een
 schijf geven 35.23-19
 24x13 36.33-28 14-19
]

30.29-23 8-12 31.23x14
 20x9 32.34-29 4-10
 33.29x20 15x24 34.40-34
 10-15 35.37-31 26x37
 36.32x41 9-14 37.41-37
 14-20 38.44-40 17-21
 39.37-32 12-18 40.46-41
 3-9 41.34-29 18-23
 1-1

☐ Dee,van,H. (Hein)
 ■ Groot,R.S.C. (Ruud)
 Nationale Clubcompl9-09-2015

1.34-29 17-22 2.40-34
 11-17 3.45-40 19-23
 4.32-28 23x32 5.37x28
 16-21 6.41-37 7-11
 7.31-26 1-7 8.46-41
 20-25 9.37-32 14-19
 10.41-37 11-16 11.50-45

19-24 12.29x20 25x14
 13.34-29 14-19 14.37-31
 10-14 15.31-27 22x31
 16.26x37 5-10 17.29-23
 18x29 18.33x24 19x30
 19.35x24 21-26 20.38-33
 17-21 21.42-38 12-18
 22.47-42 7-12 23.33-29
 12-17 24.39-33 17-22
 25.28x17 21x12 26.33-28
 18-22 27.28x17 12x21
 28.38-33 6-11 29.43-39
 11-17 30.33-28 13-18
 31.49-43 9-13 32.43-38
 17-22 33.28x17 21x12
 34.38-33 12-17 35.33-28
 17-21 36.37-31 26x37
 37.32x41 21-26 38.41-37
 16-21 39.28-23 8-12
 40.39-33 12-17 41.23x12
 17x8 42.42-38 8-12
 43.38-32 3-9 44.32-28
 13-18 45.36-31 12-17
 46.37-32 26x37 47.32x41
 21-26 48.40-34 18-22
 49.41-37 22-27 50.28-23
 17-21 51.34-30 27-32
 52.37x28 26-31 53.48-42
 21-26 54.28-22 31-37
 55.42x31 26x37 56.22-17
 37-42 57.30-25 42-48
 58.44-40 2-7



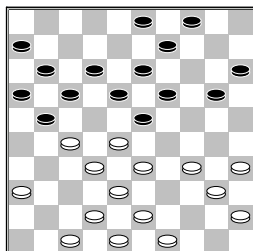
59.17-12
 [Een optie om te spelen
 in deze stand is
 59.24-19

A) 59...48-26
 60.29-24 26x20
 (60...26x47 61.40-34
 14x23 62.45-40 47x20
 63.25x5) 61.33-29
 14x34 62.25x3 34-39
 63.40-34 39x30
 64.3-25 30-35
 65.25-39 15-20
 66.39-50 20-25
 67.45-40 35x44
 68.50x2
B) 59...48-37
 60.33-28 9-13
 (60...37-26 61.29-24
 26x20 62.28-22 14x23
 63.25x5; 60...7-12
 61.17x8 37-26 62.8-2
 26-8 63.2x13 9x18
 64.23x12 14x32

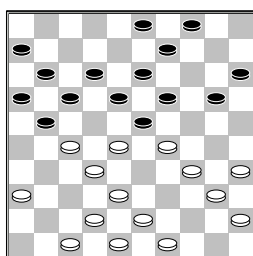
65.12-7 32-37 66.7-2
 37-41 67.29-23 10-14
 68.40-34) 61.19x8
 14-19 62.23x5 37x2
 63.17-12 7x18
C) 59...48-31
 60.19-13 9x18 61.23x1
 +]
59...7x18 60.23x12
48-34 61.33-28 34x1
62.40-34 1x40 63.45x34
14-19 64.24x13 9x18
65.34-29 10-14 66.28-23
18-22 67.29-24 4-9
68.24-19 22-27 69.19x10
15x4 70.23-18
1-1

Berends, M. (Martin)
 Yigiturk, B. (Berke)
 Nationale Clubcom19-09-2015

1.31-26 19-23 2.36-31
14-19 3.41-36 10-14
4.46-41 17-22 5.32-28
23x32 6.37x17 11x22
7.31-27 22x31 8.26x37
12-17 9.33-28 7-12
10.39-33 17-21 11.44-39
12-17 12.28-23 19x28
13.33x11 6x17 14.50-44
8-12 15.39-33 1-6
16.44-39 14-19 17.37-32
5-10 18.41-37 10-14
19.37-31 19-23 20.33-28
14-19 21.39-33 2-7
22.31-27 7-11



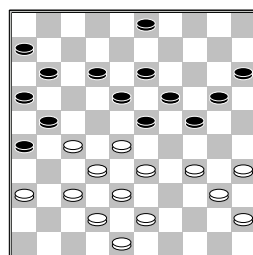
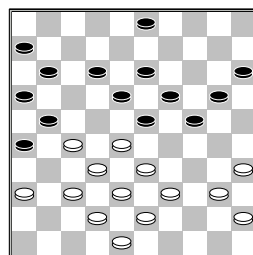
23.42-37
 [Wit had in deze stand
 beter de volgende variant
 kunnen spelen >23.33-29



en zwart heeft geen goede
 zet meer
A) 23...9-14 24.47-41
 3-8 (24...21-26
 25.27-22 18x27

26.29x7 11x2
 27.32x12; 24...20-25
 25.27-22 18x27
 26.29x20 25x14
 27.41-37) 25.41-37
 4-9 26.27-22 18x27
 27.29x7 11x2 28.37-31
 20-24 29.31x11 16x7
B) 23...20-24
 24.29x20 15x24
 25.38-33 21-26
 (25...3-8 26.27-22
 18x29 27.43-39 23x32
 28.34x3) 26.36-31
 26x37 27.42x31 17-21
 28.27-22 18x29
 29.31-26 23x32
 30.34x14 9x20
 31.26x30
C) 23...20-25
 24.35-30 15-20
 25.27-22 18x27
 26.29x7 11x2 27.38-33
 27x29 28.34x14 25x34
 29.14x25
D) 23...21-26
 24.27-22 18x27
 25.29x7 11x2 26.32x12
E) 23...4-10 24.27-22
 18x27 25.29x7 11x2
 26.38-33 27x29
 27.34x5
F) 23...3-8 24.27-22
 18x27 25.29x7 11x2
 26.38-33 27x29
 27.34x12 17x8]
23...20-24 24.47-42
21-26 25.43-39 17-21
26.49-43 4-10 27.34-30
10-14 28.30-25 14-20
29.25x14 9x20

30.39-34



[Wit had nu >30.28-22
 moeten spelen er had dan
 kunnen volgen 24-29

31.33x24 20x29
 32.40-34 29x40
 33.45x34 19-24
 34.34-30 24-29
 35.39-33 23-28
 36.32x34 21x41
 37.36x47 18x27 met een
 gelijkwaardige stand]
30...24-29 31.33x24
19x39 32.28x17 11x31
33.36x27 18-23 34.43x34
23-28 35.32x23 21x41
36.42-37 41x43 37.48x39
26-31 38.35-30 31-37
39.34-29 37-41 40.39-33
41-46 41.33-28 16-21
42.30-24 20-25 43.40-34
21-27 44.24-19 3-8
45.29-24 27-32 46.28x37
46x32 47.45-40 6-11
48.40-35 32-37 49.34-29
25-30 50.23-18 37x10
0-2

Eenennaam, van, F.A. (F)
 Sakidin, R.P. (Ramon)
 Nationale Clubcom19-09-2015

1.32-28 17-22 2.28x17
 12x21 3.31-26 7-12
 4.26x17 11x22 5.37-32
 1-7 6.41-37 7-11
 7.46-41 16-21 8.33-28
 22x33 9.39x28 21-26
 10.44-39 19-23 11.28x19
 14x23 12.39-33 10-14
 13.50-44 5-10 14.44-39
 14-19 15.34-30 20-25
 16.32-28 23x32 17.37x28
 25x34 18.39x30 10-14
 19.41-37 15-20 20.30-25
 20-24 21.37-32 12-17
 22.40-34 18-23 23.34-30
 13-18 24.49-44 8-13
 25.44-40 11-16 26.36-31
 26x37 27.42x31 2-7
 28.31-27 7-11 29.47-41
 17-22 30.28x17 11x31
 31.41-36 31-37 32.32x41
 6-11 33.41-37 11-17
 34.37-32 17-21 35.32-27
 21x32 36.38x27 23-29
 37.43-38 18-22 38.27x18
 13x22 39.40-34 29x40
 40.45x34 22-28 41.33x22
 24-29 42.34x23 19x17
 43.38-32 14-20 44.25x14
 9x20 45.30-25 20-24
 46.48-43 4-9 47.43-39
 9-14 48.32-28 16-21
 49.36-31 3-9 50.31-26
 21-27 51.39-34 9-13
 52.28-23 24-29 53.23-18
 13x22 54.34x23 27-32
 55.25-20 14x25 56.23-19
 32-38 57.19-14 38-43
 58.14-10 43-49 59.10-5

49-16 60.5-23 16-2
 61.23-1 22-28 62.1-6
 17-22 63.6-1 22-27
 64.1-18 27-32 65.26-21
 2-24 66.21-16 25-30
 67.18-45 32-37 68.45-50
 1-1

□ Lem, van der, P.L. (Pau)

■ Malahé, P.M. (Pertap)

Nationale Clubcom19-09-2015

1.33-28 20-25 2.39-33
 15-20 3.44-39 10-15
 4.49-44 5-10 5.31-26
 18-23 6.36-31 20-24
 7.41-36 15-20 8.46-41
 10-15 9.31-27 17-21
 10.26x17 11x31 11.36x27
 6-11 12.41-36 12-18
 13.34-29 23x34 14.40x29
 7-12 15.44-40 11-17
 16.29-23 18x29 17.28-22
 17x28 18.32x34 12-18
 19.33-28 18-23 20.37-32
 2-7 21.50-44 8-12
 22.34-30 25x34 23.40x18
 13x33 24.39x28 9-13
 25.36-31 4-9 26.31-26
 20-25 27.43-39 14-20
 28.42-37 3-8 29.47-41
 12-18 30.41-36 7-12
 31.37-31 18-23 32.28-22
 12-18 33.22-17 23-29
 34.39-33 29-34 35.44-39
 34x43 36.48x39 24-30
 37.35x24 19x30 38.45-40
 30-34 39.40x29 20-24
 40.29x20 15x24 41.39-34
 18-23 42.17-12 8x17
 43.27-21 16x27 44.32x12
 9-14 45.38-32 14-19
 46.32-28 23x32 47.31-27
 32x21 48.26x17 24-30
 49.34-29 30-35 50.33-28
 35-40 51.29-23 19-24
 52.17-11 40-44 53.12-7
 1x12 54.11-6 44-49
 55.6-1 12-17 56.23-19
 24-30 57.19x8 49-44
 1-1

□ Bidesi, R.P. (Roy)

■ Os, van, D.J.A.M. (Daan)

Nationale Clubcom19-09-2015

1.33-28 18-22 2.38-33
 12-18 3.31-26 19-23
 4.28x19 14x23 5.33-28
 22x33 6.39x19 13x24
 7.37-31 7-12 8.44-39
 10-14 9.50-44 5-10
 10.42-38 9-13 11.39-33
 4-9 12.44-39 14-19
 13.41-37 1-7 14.46-41
 10-14 15.47-42 17-21
 16.26x17 12x21 17.32-27
 21x32 18.37x28 7-12

19.41-37 18-23 20.37-32
 11-17 21.34-29 23x34
 22.40x29 12-18 23.42-37
 17-22 24.28x17 18-23
 25.29x18 13x11 26.32-28
 8-13 27.37-32 20-25
 28.48-42 3-8 29.42-37
 8-12 30.49-44 14-20
 31.28-23 19x28 32.33x22
 9-14 33.31-27 14-19
 34.36-31 2-8 35.39-33
 24-29 36.33x24 20x29
 37.44-40 12-18 38.43-39
 19-23?
 [zwart had de volgende
 variant moeten spelen
 >38...8-12 39.39-33
 19-24 40.33-28 15-20
 41.40-34 29x40
 42.45x34 24-29
 43.34x23 18x29
 44.38-33 29x38
 45.32x43 13-19
 46.37-32 11-17
 47.22x11 6x17 48.43-38
 20-24 49.38-33 12-18
 50.31-26 18-23
 51.27-22 25-30
 52.22x11 16x7 53.33-29
 24x22 54.35x13 22-28
 55.32-27 28-33 56.13-9
 33-39 57.9-4 39-44
 met remise]
 39.39-33 29-34 40.40x29
 23x34 41.35-30 34-39
 42.33x44 25x34 43.44-40
 8-12 44.40x29 15-20
 45.45-40 11-17 46.22x11
 16x7 47.31-26 13-19
 48.27-22 18x27 49.32x21
 6-11 50.37-32 11-17
 51.32-28 20-25 52.29-23
 19-24 53.38-32 7-11
 54.21-16 25-30 55.16x18
 30-35 56.40-34 24-30
 57.34x25 35-40 58.23-19
 40-44 59.19-14
 2-0

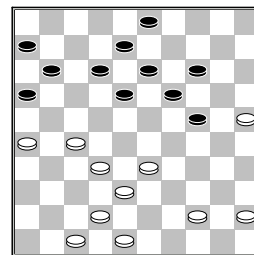
□ Wind, J. (Joop)

■ Giphart, J. (Hans)

Nationale Clubcom19-09-2015

1.33-29 20-25 2.39-33
 14-20 3.44-39 10-14
 4.50-44 5-10 5.31-26
 19-23 6.32-28
 [Met 6.37-31 had de
 volgende variant op het
 bord kunnen komen 14-19
 7.41-37 10-14 8.46-41
 4-10 9.32-28 23x32
 10.37x28 19-23
 11.28x19 13x24
 12.41-37 8-13 13.37-32
 2-8 vandaar ook 19-23
 als 5e zet]

6...23x32 7.37x28 17-22
 8.28x17 11x22 9.41-37
 14-19 10.29-24 19x30
 11.35x24 20x29 12.33x24
 10-14 13.37-31 14-19
 14.40-35 19x30 15.35x24
 18-23 16.44-40 12-18
 [in de database van
 turbodatabase kwam deze
 stand 1 keer voor, het
 ging toen verder met
 16...13-18 17.40-35
 9-13 18.46-41 13-19
 19.24x13 18x9 20.41-37
 9-13 21.38-32 13-18
 22.32-27 23-28
 23.34-30 25x34
 24.39x30 7-11 25.42-38
 1-7 26.47-42 15-20
 27.38-33 28x39
 28.43x34 20-25
 29.42-38 8-13 30.38-33
 12-17 31.48-42 3-9
 32.42-38 7-12 33.33-29
 2-7 34.30-24 9-14
 35.24-20 22-28 36.20x9
 28-32 37.37x28 17-21
 38.26x19 4x42 39.27-21
 16x27 40.31x13 42-47
 41.13-9 11-16 42.9-3
 7-11 43.28-23 47-15
 44.23-19 15-42 45.3-26
 en zwart gaf op]
 17.40-35 7-12 18.46-41
 1-7 19.34-30 25x34
 20.39x30 13-19 21.24x13
 8x19 22.41-37 9-13
 23.31-27 22x31 24.36x27
 15-20 25.49-44 2-8
 26.37-32 4-9 27.43-39
 9-14 28.30-25 7-11
 29.39-33 20-24 30.44-40
 23-29 31.40-34? 29x40
 32.35x44

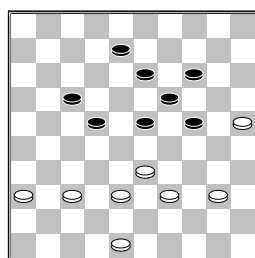


18-23

[Zwart had nu een
 schijf kunnen winnen door
 >32...12-17 33.26-21
 (33.47-41 17-21
 34.26x17 11x31
 35.41-36 18-23
 36.36x27 24-30
 37.25x34 23-29
 38.33x24 19x50;
 33.27-21? 16x27
 34.32x23 19x50)]

33.44-39 12-17 34.27-21
 [wit had beter
 34.48-43 kunnen spelen,
 er had kunnen volgen
 13-18 35.47-41 17-21
 36.26x17 11x31
 37.32-28 23x32
 38.38x36 8-12 39.43-38
 6-11 40.41-37 19-23
 41.37-32 18-22
 42.32-27 22x31
 43.36x27 11-17
 44.38-32 14-19
 45.45-40]

34...16x27 35.32x12
8x17 36.42-37 17-21
37.26x17 11x22 38.47-41
6-11 39.45-40 3-8
40.41-36 11-17

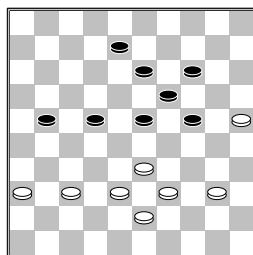


41.40-34? na deze zet is
 het uit in alle varianten
 [Wit had beter
 >41.48-43 kunnen spelen
 met als vervolg
A) 41...8-12 42.37-31
 13-18

A1) 43.40-35 14-20
 44.25x14 19x10
 45.39-34 23-28
 46.43-39 17-21
 47.34-30 18-23
 48.30x19 23x14
 49.35-30 21-27
 50.33-29 12-18
 51.29-24 14-19
 52.24x13 18x9
 53.30-24 10-14
 54.39-34 28-32
 55.38-33 22-28
 56.33x22 27x18
 57.31-26 32-38
 58.26-21 38-43
 59.21-16 43-48
 60.34-30 48x25
 61.16-11 9-13
 62.11-7

A2) 43.31-27 22x31
 44.36x27 17-22
 45.40-35 (45.27-21?
 23-28 46.40-34 18-23
 47.21-16 12-17)
 45...22x31 46.33-28
 23x32 47.38x36 18-22
 48.36-31 12-17
 49.43-38 17-21
 50.38-32 22-28

51.32x23 19x28
 52.39-34
B) 41...17-21



B1) 42.40-35 13-18
 43.37-32 22-27
 44.33-28 8-13
 45.39-33 21-26
 46.32x21 26x17
 47.36-31 23x32
 48.38x27 17-22
 49.43-39 19-23
 50.39-34 14-19
 51.35-30 24x35
 52.25-20 19-24
 53.20x29 35-40
 54.34x45 23x34
 55.31-26 22x31
 56.26x37

B2) 42.37-32? 23-28
 43.32x23 19x28
 44.40-34 21-27
 45.34-29 24-30
 46.25x34 14-20
 47.34-30 20-25
 48.30-24 (48.29-23
 28x19 49.39-34 19-24
 50.30x19 13x24 deze
 stand doet mij denken
 aan de partij tussen Ton
 Sijbrands en Harm
 Wiersma, Harm won zijn
 partij op zelfde manier.
 als ik mij niet vergis
 onbraken schijf 25 en 43
 in die partij en twijfel
 over de plaats van
 schijf 8. 51.34-29
 22-28 52.33x31
 24x42) 48...8-12
 49.24-19 13x24
 50.29x20 25x14
 51.33-29 14-20
 52.39-34 28-33
 53.29-23 33x42]

41...22-27 42.48-43
8-12 43.34-29
 [43.37-32? 23-29]
 [43.37-31? 17-22
 44.31-26 23-29
 45.34x23 19x28]
43...23x34 44.39x30
24x35 45.43-39 19-23
46.39-34 13-19 47.37-31
 [Een andere optie is
 47.33-29 12-18

48.37-31 27-32
 49.38x27 35-40
 50.34x45 23x34
 51.27-22 17x28
 52.31-27 34-39
 53.27-21 39-43
 54.21-17 43-49
 55.17-11 49-16 56.11-6
 16-7 57.6-1 19-23
 58.1x12 18x7]

47...17-22 48.33-29
12-18

[Op dit moment
 berekende ik de snelle
 winst variant, tot dit
 tijd was ik de volgende
 variant van plan om te
 spelen 48...23-28
 49.29-23 28-32
 50.25-20 14x25
 51.23x14 32x43 52.14-9
 43-49 53.34-30 35x24
 54.9-3 12-18 55.3-9
 24-30 56.9-4 30-34
 57.4-15 34-39 58.15-47
 39-44 59.47-41 44-50
 60.41-14 50-33
 61.14-37 (61.14-28
 33-50 62.28x6 18-22
 63.6x44 50x22)
 61...18-23 62.37x5
 22-28 63.5x16 33-38
 64.16x43 49x38]

49.38-33 27-32 50.31-26
22-27 51.33-28

[51.36-31 27x36
 52.26-21 36-41
 53.34-30 23x34
 54.30x39 41-46
 55.21-16 32-38
 56.33x42 46-28]
 [51.34-30 23x34
 52.30x39 35-40
 53.33-29 40-45]

51...27-31 52.36x38
23x43
0-2