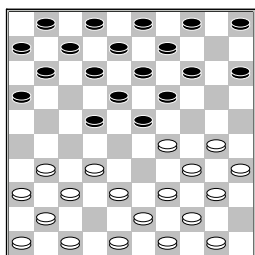
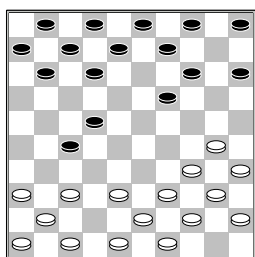


Bremmer, W. (Wim)
 Krijgsman, R. (Remco)
 Nationale Clubcom 17-10-2015

1.33-29 19-23 2.35-30
 14-19 3.40-35 10-14
 4.45-40 20-25 5.38-33
 14-20 6.42-38 20-24
 7.29x20 25x14 8.33-29
 17-22



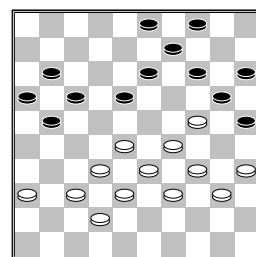
9.48-42 Deze zet komt niet voor in de database van Turbodatabase.
 [9.50-45 22-27
 10.31x22 18x27
 11.29x18 13x22
 12.32x21 16x27



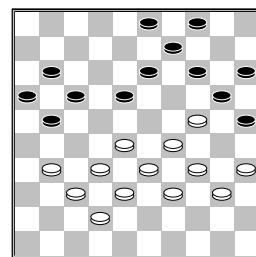
A) 13.30-25 19-23
 14.48-42 14-19
 15.34-29 23x34
 16.39x30 9-14
 17.44-39 5-10
 18.39-34 19-23
 19.34-29 23x34
 20.40x29 12-18
 21.37-32 11-16
 22.32x21 16x27
 23.41-37 6-11
 24.37-32 11-16
 25.32x21 16x27
 26.46-41 7-11
 27.41-37 8-13 Deze partij eindigde later in remise
B) 13.48-42 19-23
 14.39-33 14-19
 15.44-39 12-18
 16.30-24 19x30
 17.35x24 7-12
 18.34-29 23x34
 19.40x29 9-14
 20.49-44 14-19
 21.24x13 8x19
 22.37-32 11-16

23.32x21 16x27
 24.41-37 6-11
 25.47-41 1-6 26.37-32
 11-16 27.32x21 16x27
 28.45-40 zwart won de partij later
C) 13.39-33 9-13
 (13...19-23 14.44-39
 8-13 15.30-25 13-19
 16.34-29 23x34
 17.39x30 12-18
 18.40-34 7-12
 19.47-42 1-7 20.34-29
 9-13 21.43-39 3-8
 22.39-34 19-23
 23.49-44 13-19
 24.44-39 8-13
 25.30-24 19x30
 26.35x24 14-19
 27.45-40 19x30
 28.25-20 15x24
 29.34x25 23x32
 30.37x30 en wit won later.) 14.44-39
 12-18 15.34-29 19-23
 16.30-25 23x34
 17.39x30 7-12
 18.37-31 1-7 19.41-37
 4-10 20.40-34 14-20
 21.25x14 10x19
 22.43-39 5-10
 23.45-40 10-14
 24.48-43 19-23
 25.30-25 11-17
 26.34-30 23-28
 27.40-34 13-19
 28.31-26 6-11
 29.37-31 11-16
 30.33-29 18-23
 31.29x18 12x23
 32.46-41 7-12
 33.41-37 17-21
 34.26x17 12x21
 35.30-24 19x30
 36.35x24 8-12 Wit wint de partij later.
D) 13.38-33 5-10
 14.47-42 19-23
 15.42-38 14-19
 16.30-24 19x30
 17.35x24 9-13
 18.37-31 13-18
 19.33-29 3-9 20.38-33
 23-28 21.41-37 10-14
 22.43-38 11-16
 23.48-43 18-23
 24.29x18 22x13
 25.31x22 28x17
 26.34-29 de partij zou later in remise eindigen.
]
 [9.39-33 23-28
 10.32x23 19x39
 11.44x33 14-19
 12.43-39 19-23
 13.31-26 11-17
 14.37-31 6-11 15.48-43

1-6 16.30-24 22-27
 17.31x22 18x27
 18.29x18 12x23
 19.50-45 7-12 20.34-29
 23x34 21.40x29 Deze partij zou later in remise eindigen.]
9...12-17 10.31-27
22x31 11.36x27 7-12
12.38-33 1-7 13.43-38
17-22 14.41-36 22x31
15.36x27 11-17 16.46-41
17-22 17.41-36 22x31
18.36x27 6-11 19.30-24
19x30 20.35x24 14-20
21.49-43 11-17 22.47-41
5-10 23.41-36 20-25
24.40-35 17-21 25.50-45
12-17 26.33-28 7-12
27.28x19 2-7 28.39-33
18-22 29.27x18 12x14
30.43-39 13-18 31.33-28
8-13 32.45-40 14-20
33.39-33 7-11 34.44-39
10-14



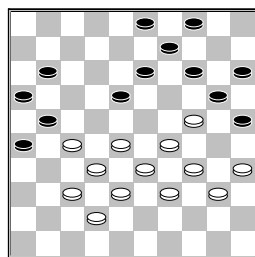
35.37-31
 [>35.36-31



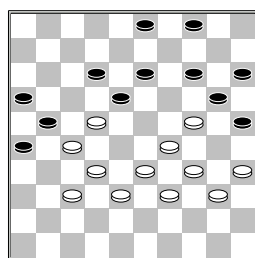
A) 35...18-22
 36.31-27 22x31
 37.37x26 13-18
 38.42-37 3-8 39.28-23
 8-12 40.37-31 9-13
 41.31-27 14-19
 42.23x14 20x9
 43.33-28 4-10
B) 35...21-26
 36.31-27 17-21

(diagram)

B1) 37.28-22 3-8
 38.33-28 8-12
 39.35-30 12-17
 40.39-33 4-10



41.24-19 13x44
 42.22x4 44-49
B2) 37.28-23 11-17
 38.23x12 17x8
 39.33-28 13-18
 40.38-33 9-13
 41.42-38 8-12
 42.28-22

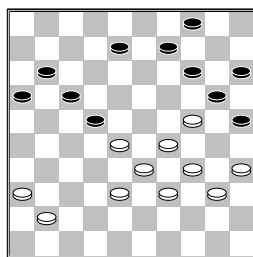


B2a) 42...13-19
 43.22x13 19x30
 44.35x24 14-19
 45.33-28 19x8
 46.28-22 8-13
 47.38-33 3-8
 48.33-28 12-17
 49.22x11 16x7
 50.27x16
B2b) 42...3-8
 43.33-28 4-9
 44.35-30 14-19
 45.39-33 26-31
 46.37x17 12x21
 47.29-23 18x29
 48.34x12 25x45
 49.12-7 20x29
 50.33x24 45-50
 51.38-33 21-26
 52.7-1 16-21
 53.27x16 26-31
 54.32-27 31-37
 55.22-17 37-42
 56.28-22 50x28
 57.22x33 42-48
 (57...42-47 58.24-20
 +)]

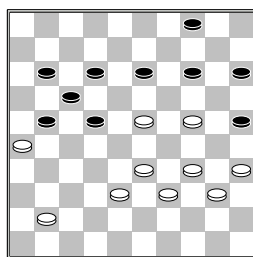
35...21-26 36.42-37
18-22 37.32-27 3-8
38.27x18 13x22 39.37-32
26x37 40.32x41

(diagram)

22-27?
 [Beter voor zwart is
 >40...9-13 41.36-31
 16-21 42.31-26 8-12



43.28-23 14-19
 44.23x14 20x9 45.29-23
 9-14



A) 46.34-29 15-20
 47.24x15 21-27
 48.40-34 4-10 49.15x4
 14-19 50.4x32 19x46
 51.29-24 22-27
 52.33-29 25-30
 53.34x25 27-31
 54.26x37 46x23
 55.25-20 23-46
 56.20-15 17-21
 57.24-20 21-27
 58.35-30 46-5
 59.30-24 5-23
 60.24-19 23x25
 61.15-10

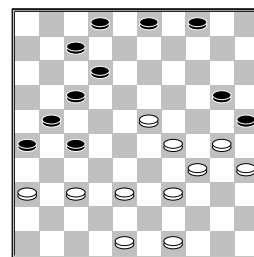
B) 46.33-29
B1) 46...13-18
 47.39-33 14-20
B2) 46...15-20
 47.24x15 13-19
 48.35-30 19x28
 49.30-24
B2a) 49...14-20
 50.38-33
B2b) 49...28-33
 50.39x28 22x42
 51.24-19 14x23
 52.29x27 42-47
 53.27-21 (53.15-10
 47x13 54.10-5
 13-35) 53...47x36
 54.21x12 36-13
 55.40-35 13-27
 56.12-7 27-18
 57.7-1 18x45
 58.26-21 45-50
 59.1-6 50-45
 60.21-16 45-50
 61.6-1 50-45
 62.16-11]

41.29-23 20x18 42.28-22
17x28 43.33x2 14-20
44.2-8

2-0

□ Jong,de,M.J. (Martin)
 ■ Malahé,P.M. (Pertap)
 Nationale Clubcom17-10-2015

1.32-28 19-23 2.28x19
14x23 3.37-32 10-14
4.41-37 16-21 5.47-41
21-27 6.31x22 18x27
7.32x21 17x26 8.37-32
5-10 9.41-37 14-19
10.46-41 10-14 11.34-29
23x34 12.40x29 19-24
13.45-40 14-19 14.40-34
12-18 15.32-28 7-12
16.34-30 20-25 17.29x20
25x34 18.39x30 15x24
19.44-39 11-17 20.39-34
6-11 21.34-29 18-22
22.29x20 19-23 23.28x19
13x15 24.37-32 1-7
25.32-28 8-13 26.50-44
13-19 27.44-39 15-20
28.39-34 20-25 29.43-39
9-14 30.42-37 11-16
31.37-32 16-21 32.41-37
14-20 33.28-23 19x28
34.32x23 22-27 35.33-29



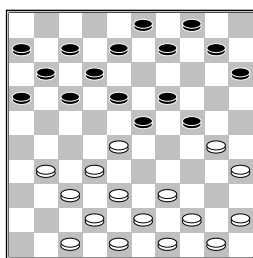
7-11

[35...4-10
A) 36.37-31? 26x37
 37.38-32 37x19
 38.30-24 19x30
 39.35x4 21-26 40.4x31
 26x37
B) 36.30-24 10-15
 37.48-43 7-11
 38.37-32 12-18
 39.23x12 17x8
 40.24-19 3-9 41.38-33
 27x38 42.33x42 9-13
 (42...8-13 43.19x8
 2x13 44.29-23 9-14
 45.34-29 14-19
 46.23x14 20x9)
 43.29-23 13x24
 44.34-30 25x34
 45.39x19]
36.48-43 11-16 37.38-32
27x38 38.43x32 17-22
39.30-24 22-28 40.24x15
28x19 41.29-24 19x30
42.35x24 3-9 43.24-19
12-17 44.19-14 9x20
45.15x24 17-22 46.49-43
2-8 47.43-38 8-13

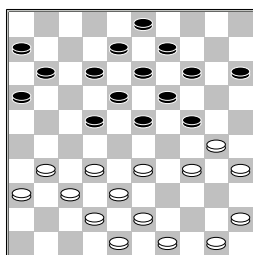
48.34-29 13-18 49.39-33
 21-27 50.32x21 16x27
 51.24-19 27-31 52.36x27
 22x42 53.38x47 25-30
 54.33-28 30-35 55.28-23
 18-22 56.19-13 35-40
 57.13-8 40-44 58.8-3
 44-49 59.23-18 22x13
 1-1

□ Eenennaam, van, F.A. (F
 ■ Klis, van der, T. (Thom
 Nationale Clubcom17-10-2015

1.32-28 19-23 2.28x19
 14x23 3.34-30 17-22
 4.31-26 12-17 5.37-31
 7-12 6.31-27 22x31
 7.26x37 1-7 8.33-28
 23x32 9.37x28 20-24
 10.30x19 13x24 11.40-34
 10-14 12.41-37 5-10
 13.37-32 8-13 14.46-41
 2-8 15.41-37 14-19
 16.34-30 18-23 17.36-31
 13-18



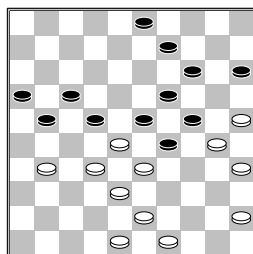
18.30-25
 [18.47-41 10-14
 19.41-36 17-22
 20.28x17 11x22
 21.39-33 7-11 22.44-39
 9-13 23.39-34 4-9



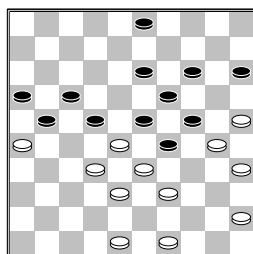
A) 24.33-28 22x33
 25.38x20 15x24
 26.50-44 12-17
 27.43-38 8-12
 28.44-39 18-22
 29.39-33 22-28
 30.33x22 17x28
 31.31-27 13-18
 32.49-43 11-17
 33.43-39 9-13
 34.39-33 28x39
 35.34x43 17-21
 36.37-31 21-26

37.42-37 23-28
 38.32x23 18x29
 39.30-25 29-34
 40.38-33 6-11
 41.43-39 34x43
 42.48x39 19-23
 43.45-40
 B) 24.31-27 22x31
 25.36x27 (25.37x26
 11-17 26.45-40 14-20
 27.32-27 20-25
 28.50-45 15-20
 29.38-32 9-14
 30.43-38) 25...12-17
 26.43-39 24-29
 27.33x24 17-21
 28.37-31 8-12
 29.49-43 21-26
 30.42-37 23-28
 31.32x23 18x20]

18...10-14 19.39-34
 17-22 20.28x17 12x21
 21.31-26 9-13 22.26x17
 11x22 23.34-30 6-11
 24.47-41 22-28 25.38-33
 28x39 26.44x33 7-12
 27.33-28 11-17 28.50-44
 17-21 29.42-38 12-17
 30.37-31 4-9 31.31-26
 23-29 32.44-39 18-22
 33.39-33 13-18 34.41-37
 18-23 35.37-31 8-13
 36.31-27 22x31 37.26x37
 13-18 38.37-31 18-22



39.43-39
 [>39.31-26 9-13
 40.43-39



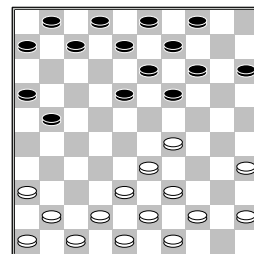
A) 40...13-18
 41.39-34 29x40
 42.45x34 22-27
 43.34-29 23x34
 44.30x39 18-23
 45.49-44 17-22
 46.28x17 21x12
 47.32x21 16x27

B) 40...29-34
 41.33-29 22x44
 (41...24x44 42.49x20
 22x42 43.48x37 15x24
 44.25-20 24x15
 45.30-24 19x30
 46.35x24; 41...22x42
 42.29x40 15-20
 43.25x23 42-47
 44.39-33 47x18
 45.40-34 18x40
 46.45x34) 42.29x40
 44-50 43.30-24 19x30
 44.35x24 50-22
 45.48-42 22-9
 46.24-19 9-22
 47.19-14 22-13
 48.40-34]

39...29-34 40.48-43
 23-29 41.49-44 3-8
 42.31-26 8-12 43.28-23
 19x37 44.30x10 15x4
 45.39x30 37-41 46.33x24
 0-2

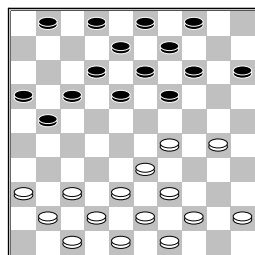
□ Out, M.N.J. (Martien)
 ■ Teijn, F. (Frans)
 Nationale Clubcom17-10-2015

1.34-29 19-23 2.40-34
 14-19 3.45-40 10-14
 4.50-45 17-21 5.31-26
 5-10 6.26x17 11x22
 7.32-28 23x32 8.37x17
 12x21 9.34-30 20-24
 10.29x20 14x34 11.40x29
 10-14



12.41-37
 [In de database komt 1
 partij voor en in deze
 stand ging het toen verder
 met 12.35-30 7-12
 13.30-25 1-7 14.41-37
 18-23 15.29x18 12x23
 16.36-31 15-20
 17.37-32 7-12 18.31-27
 4-10 19.33-28 10-15
 20.46-41 21-26
 21.41-37 20-24
 22.44-40 24-29
 23.39-33 14-20
 24.25x14 9x20 25.33x24
 19x30 26.28x19 13x24
 27.40-35 20-25
 28.43-39 3-9 wit zou
 de partij later winnen.
]

12...7-12 13.46-41 6-11
14.35-30 11-17

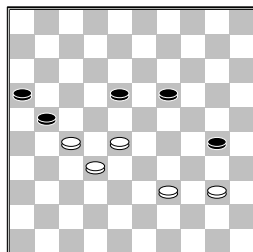


15.30-25

[In de database komt deze stand 1 keer voor het ging toen verder als volgt 15.45-40 14-20
16.29-24 20x29
17.33x24 18-22
18.39-33 13-18
19.24x13 8x19 20.44-39
9-13 21.40-34 2-8
22.34-29 4-9 23.30-25
1-7 24.37-32 21-27
25.32x21 17x26
26.41-37 16-21
27.37-32 21-27
28.32x21 26x17
29.36-31 17-21
30.31-26 22-28
31.33x22 18x27
32.26x17 12x21
33.38-33 19-23
34.29x18 13x22
35.39-34 8-13 36.49-44
7-12 37.43-39 9-14
38.34-30 12-18
39.33-28 22x33
40.39x28 3-8 41.30-24
14-19 42.44-40 19x30
43.25x34 15-20
44.40-35 20-24
45.42-38 27-31
46.28-22 18x27
47.34-29 24x42
48.48x17 27-32
49.47-42 13-18
50.17-11 8-12 51.11-6
18-22 52.6-1]

15...17-22 16.37-32
22-27 17.41-37 1-7
18.29-24 19x30 19.25x34
14-19 20.33-28 18-23
21.37-31 12-18 22.31x22
18x27 23.44-40 21-26
24.32x21 23x32 25.38x27
26x17 26.43-38 8-12
27.49-43 15-20 28.39-33
13-18 29.38-32 9-13
30.43-38 3-9 31.42-37
17-21 32.33-28 9-14
33.47-42 2-8 34.37-31
20-24 35.31-26 4-10
36.26x17 12x21 37.36-31
7-12 38.31-26 10-15
39.26x17 12x21 40.38-33

14-20 41.42-38 18-23
42.34-29 23x34 43.40x29
20-25 44.29x20 15x24
45.48-43 25-30 46.43-39
8-12 47.39-34 30x39
48.33x44 12-18 49.44-39
24-30 50.38-33 19-24
51.39-34 30x39 52.33x44
24-30 53.44-39 13-19
54.45-40



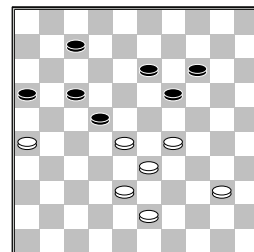
30-35 deze stand komt 2 keer voor in de database, beide eindigde in remise

55.40-34
[55.28-22 35x33
56.22x24=]
55...19-24 56.39-33
24-30 57.34x25 35-40
58.28-22
[In de database wordt is ook de volgende variant gespeeld. 58.33-29
40-44 en hier is remise besloten]
58...18-23 59.33-28
23-29 60.28-23 29x18
61.22x13 40-44 62.13-9
44-49 63.9-4 49-35
1-1

□ **Dee, van, H. (Hein)**
■ **Sluis, van der, M. (Mar)**
Nationale Clubcomp17-10-2015

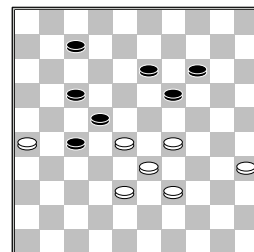
1.34-29 17-22 2.40-34
11-17 3.45-40 6-11
4.50-45 1-6 5.32-28
19-23 6.28x19 14x23
7.38-32 10-14 8.42-38
13-19 9.47-42 5-10
10.29-24 20x29 11.33x13
8x19 12.34-29 23x34
13.40x29 9-13 14.32-27
2-8 15.44-40 14-20
16.39-33 10-14 17.43-39
4-9 18.29-24 19x30
19.35x24 20x29 20.33x24
17-21 21.49-43 21x32
22.37x17 11x22 23.31-27
22x31 24.36x27 6-11
25.41-37 11-17 26.46-41
18-23 27.40-34 12-18
28.38-33 17-22 29.24-19
13x24 30.34-29 22x31
31.37x26 23x34 32.39x10
15x4 33.42-38 9-13
34.41-37 4-9 35.37-32

13-19 36.43-39 9-13
37.39-34 3-9 38.48-43
8-12 39.45-40 18-22
40.32-28 12-17 41.34-29
9-14



42.43-39

[Een andere optie voor wit is 42.29-23 22-27
43.33-29 17-21
44.26x17 7-12 45.17x8
13x2 46.40-35 27-31
47.29-24 19x30
48.35x24 31-36
49.24-19 14-20
50.19-13 36-41 51.13-9
41-47 52.38-32 47-38
53.9-4 38x21 54.4-9
21x49 55.9x25]
42...16-21 43.40-35
21-27



44.39-34

[44.29-24 19x30
45.35x24 13-18
46.39-34 7-11 47.34-30
11-16 48.30-25 16-21
49.24-20 14-19
50.20-15 18-23
51.38-32 27x29
52.15-10 23x32 53.10-4
22-28 54.25-20 19-23
55.4-27 32-37 56.27x16
37-41 57.16-21 17-22
58.20-15 41-47
59.21-43 29-33
60.43-25 47-36
61.15-10 33-38 62.10-5
38-42 63.5-19 23x14
64.25x48]
44...13-18 45.34-30
18-23 46.29x18 22x13
47.30-24 19x30 48.35x24
17-21 49.26x17 27-31
50.33-29 31-36 51.28-23
36-41 52.17-12 7x18
53.23x12 13-18 54.12x23
41-46

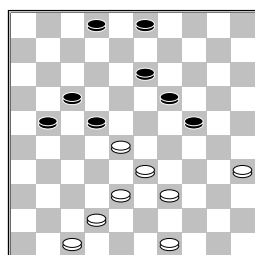
1-1

□ Kooter,de,R.S. (Ruud)

■ Lodder,P. (Piet)

Nationale Clubcompl7-10-2015

1.32-28 17-21 2.37-32
 21-26 3.32-27 26x37
 4.41x32 11-17 5.46-41
 19-23 6.28x19 14x23
 7.41-37 10-14 8.34-30
 14-19 9.33-28 7-11
 10.39-33 17-22 11.28x17
 11x31 12.36x27 12-17
 13.33-28 6-11 14.44-39
 1-6 15.39-33 20-24
 16.30-25 17-22 17.28x17
 11x31 18.37x26 5-10
 19.50-44 10-14 20.44-39
 8-12 21.32-27 12-17
 22.38-32 14-20 23.25x14
 9x20 24.42-38 17-22
 25.32-28 23x21 26.26x28
 6-11 27.39-34 11-17
 28.34-30 20-25 29.48-42
 25x34 30.40x20 15x24
 31.45-40 16-21 32.40-34
 4-10 33.34-29 10-15
 34.29x20 15x24 35.43-39
 18-22

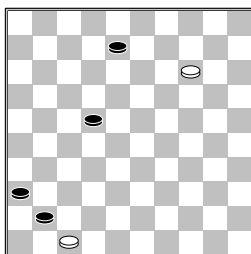
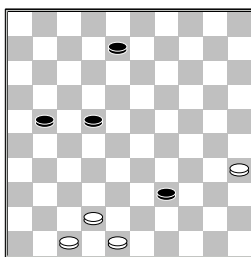


36.49-44

[Probleemloos voor wit
 is >36.39-34 21-26
 37.42-37 2-8 38.38-32
 8-12 39.34-29 24-30
 40.35x24 19x30
 41.37-31 26x37
 42.32x41 13-18
 43.41-37 22-27
 44.37-32 27x38
 45.33x42 3-9 46.49-44
]
 36...13-18 37.39-34
 18-23 38.44-39 23x43
 39.39x48 19-23 40.34-30
 23-28 41.30x19 28x39
 42.19-14 3-9 43.14x3
 2-8 44.3x12 17x8

(diagram)

deze stand verdient een
 diagram, dit eindspel is
 uit 45.48-43 39x37
 46.35-30 21-27 47.30-24
 27-31 48.24-19 31-36
 49.19-14 37-41



50.14-9

[50.14-10 41-46 +
]

50...8-13

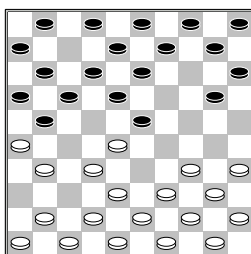
0-2

□ Groot,de,G.J. (Gerard)

■ Fthalla,A.M. (Ali)

Nationale Clubcompl7-10-2015

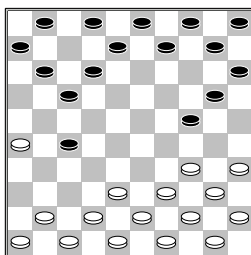
1.32-28 16-21 2.31-26
 11-16 3.37-32 7-11
 4.36-31 19-23 5.28x19
 14x23 6.33-28



9-14

[In deze stand wordt
 ook vaak de volgende
 variant gespeeld:

6...21-27 7.31x22
 18x27 8.28x19 13x24
 9.32x21 16x27



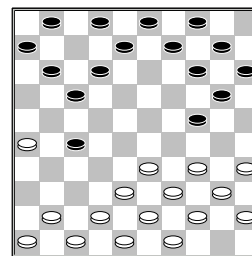
in deze stand geef ik
 enkele varianten die in de
 database staan. Voor meer
 uitgebreide varianten:
 schaf Turbodatabase aan.

A) 10.39-33

A1) 10...10-14

11.44-39 5-10

12.50-44



A1a) 12...9-13

13.34-30 1-7

14.30x19

A1a1) 14...13x24

15.40-34 4-9

16.33-28 9-13

17.38-33 17-21

18.26x17 11x22

19.28x17 12x21

20.41-37 7-12

21.46-41 6-11

22.33-28 11-16

23.37-32 27x38

24.43x32 20-25

25.49-43 14-20

26.32-27 21x23

27.34-30 25x34

28.39x28

A1a2) 14...14x23

15.35-30 10-14

A1a21) 16.30-25

12-18 17.33-29

23x34 18.40x29

7-12 19.41-37

27-31 20.38-33

31-36 21.42-38

3-9 22.45-40

13-19 23.29-24

19x30 24.25x34

20-24

A1a22) 16.41-37

4-9

A1a221) 17.30-25

14-19 18.25x14

9x20 19.39-34

12-18 20.43-39

7-12 21.48-43

17-22 22.46-41

A1a222) 17.46-41

12-18 (17...14-19

18.30-25 17-22

19.25x14 19x10

20.33-29 23x34

21.40x29 13-19

22.37-32 11-16

23.32x21 16x27

24.41-37 27-31)

18.30-25 14-19

19.25x14 9x20

(19...19x10

20.39-34 10-14

21.43-39 14-19
 22.48-43 8-12
 23.34-30 2-8
 24.40-35 9-14
 25.44-40 11-16
 26.40-34 7-11
 27.45-40 17-21
 28.26x17 11x22
 29.30-24 19x30
 30.34x25 13-19
 31.40-34 6-11
 32.34-29 23x34
 33.39x30) 20.39-34
 7-12 21.43-39
 3-9 22.48-43
 9-14 23.40-35
 17-21 24.26x17
 11x22 25.35-30
 20-25 26.34-29
 25x34 27.29x40

A1b) 12...1-7
A1b1) 13.41-37
 9-13 14.46-41 4-9
 15.37-32 11-16
 16.32x21 16x27
 17.41-37 7-11
 18.37-32 11-16
 19.32x21 16x27
 20.33-28 2-7
 21.38-33 17-21
 22.26x17 12x21
 23.43-38

A1b2) 13.33-28
 9-13 14.38-33 4-9
 15.42-38 11-16
 16.48-42 7-11
 17.34-29 17-21
 18.26x17 11x22
 19.28x17 12x21
 20.40-34 6-11

A1b3) 13.41-36
 9-13 (13...8-13
 14.46-41 13-18
 15.42-37 9-13
 16.48-42 2-8
 17.33-28 11-16
 18.37-32 4-9
 19.32x21 16x27
 20.38-33 18-22
 21.42-37 6-11
 22.37-31 13-19
 23.47-42 8-13
 24.43-38) 14.46-41
 4-9 15.41-37 13-18
 16.37-32 11-16
 17.32x21 16x27
 18.33-28 9-13
 19.38-33 18-22
 20.42-38 3-9
 21.48-42 20-25
 22.34-30 25x34
 23.40x20 15x24
 24.45-40 13-19

A2) 10...1-7
 11.44-39 10-14
 12.50-44 5-10
 13.41-37 9-13

14.46-41 4-9
 15.37-32 11-16
 16.32x21 16x27
 17.33-28 7-11
 18.38-33 2-7
 19.42-38 11-16
 20.34-29 7-11
 21.40-34 17-21
 22.26x17 11x22
 23.28x17 12x21
 24.44-40 6-11
 25.34-30 11-17
 26.30x19 14x34
 27.40x29

A3) 10...9-13
 11.44-39 (11.34-30
 1-7 12.30x19 13x24
 13.40-34 10-14
 14.44-39 5-10
 15.50-44 4-9
 16.41-37 27-31
 17.46-41 31-36
 18.37-32 8-13
 19.41-37 2-8)
 11...10-14 12.50-44
 5-10 13.41-37 1-7
 14.46-41 4-9
 15.37-32 11-16
 16.32x21 16x27
 17.33-28

B) 10.41-37 10-14
 11.46-41 1-7 12.39-33
 5-10 13.44-39 9-13
 14.50-44 4-9 15.37-32
 11-16 16.32x21 16x27
 17.33-28 7-11
 18.38-33 2-7

C) 10.34-30 9-13
 11.30x19 13x24
 12.40-34 10-14
 13.34-30 5-10
 14.30x19 14x23
 15.35-30 10-14
 16.45-40 8-13
 17.50-45

D) 10.38-33 10-14
 11.33-28 9-13
 12.39-33 5-10
 13.44-39 1-7 14.50-44
 4-9 15.42-38 11-16
 16.48-42 7-11
 17.34-29

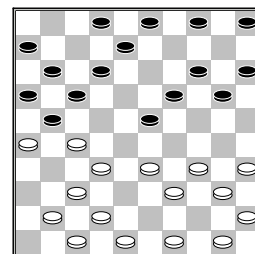
E) 10.38-32 27x38
 11.43x32 10-14
 12.41-37 5-10
 13.46-41 1-7 14.39-33
 9-13 15.42-38 4-9
 16.49-43 12-18
 17.44-39 7-12
 18.47-42 14-19
 19.32-27 10-14

F) 10.34-29 24x33
 11.39x28 (11.38x29
 1-7 12.35-30 9-13
 13.39-33 13-19
 14.40-35 20-24
 15.29x20 15x24)

11...17-21 12.26x17
 11x33 13.38x29 10-14
 14.35-30 14-19
 15.30-25 20-24
 16.29x20 15x24
 17.44-39 8-13
 18.39-33

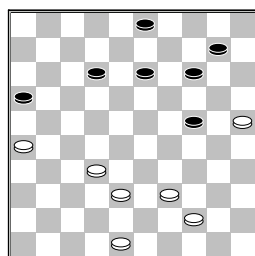
G) 10.42-37 10-14
 11.41-36 9-13
 12.39-33 1-7 13.44-39
 5-10 14.50-44 4-9
 15.46-41 13-18
 16.48-42 9-13
 17.33-28 3-9 18.38-33
 18-22 19.42-38 13-19
 20.34-29 20-25
 21.29x20 15x24
 22.40-34]

7.28x19 14x23 8.31-27
10-14 9.38-33 23-28
10.32x23 18x38 11.43x32
12-18 12.41-37 1-7
13.39-33 7-12 14.46-41
13-19 15.44-39 18-23



16.33-28
 [In de database komt de volgende partij voor
 16.41-36 19-24
 17.33-28 14-19
 18.50-44 12-18
 19.48-43 8-13 20.34-30
 5-10 21.30-25 10-14
 22.43-38 4-9 23.37-31
 18-22 24.27x29 24x22
 25.31-27 22x31
 26.26x37 13-18
 27.40-34 17-22
 28.39-33 2-8 29.34-30
 19-23 30.33-28 22x33
 31.38x29 23x34
 32.30x39 21-27
 33.32x21 16x27
 34.37-32 27x38
 35.42x33 20-24 zwart
 zou deze partij later winnen.]
 [een andere optie voor wit is: 16.49-43 23-28
 17.33x22 17x28
 18.26x17 11x31
 19.32x23 19x28
 20.37x26 8-13 21.35-30
 20-25 22.43-38 5-10
A) 23.38-33 12-18
 24.33x22 18x27
 25.42-38 2-7 26.30-24

4-9 27.38-33 14-20
 28.34-29 (28.26-21
 20x38 29.21x43)
 28...7-11 29.41-37
B) met deze zet krijgt
 zwart een aanknopings
 schijf 23.39-33 28x39
 24.34x43 25x34
 25.40x29 14-19
 26.41-37 12-18
 27.43-39 (27.37-32
 19-23 28.50-44 23x34
 29.44-39 15-20
 30.39x30 20-25
 31.30-24 10-14
 32.24-20 14-19
 33.20-15 25-30
 34.43-39) 27...10-14
 28.38-33 14-20
 29.37-32 4-9]
16...17-22 17.27x7 4-9
18.26x17 11x44 19.50x39
2x11 20.32-27 8-13
21.49-43 11-17 22.34-30
20-24 23.42-38 17-21
24.47-42 21x32 25.38x27
6-11 26.42-38 11-17
27.37-31 24-29 28.31-26
17-22 29.27x18 23x12
30.38-32 19-23 31.43-38
13-18 32.40-34 29x40
33.45x34 23-28 34.32x23
18x40 35.35x44 15-20
36.30-25 20-24 37.41-37
5-10 38.37-32 9-13

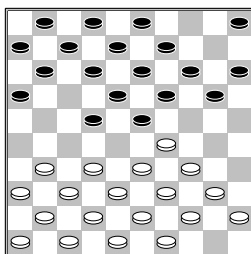


39.39-33
 [Wit kan een klein
 voordeeltje krijgen door
 >39.26-21 16x27
 40.32x21 13-18
 41.38-32 14-19
 42.39-33 10-14
 43.33-28 3-8 44.48-42
 24-29 45.32-27 29-34
 46.42-38 18-23
 47.28-22 23-28
 48.22x33 34-39
 49.44-40 39x28
 50.21-16 Maar bij goed
 spel van zwart wordt het
 remise.]
39...13-18
 [klein beetje beter
 voor zwart is de volgende
 variant >39...12-17
 40.33-28 13-18

41.32-27 3-8 42.48-43
 14-19 43.44-39 8-12
 44.39-33 18-23
 45.27-22 23x32
 46.22x11 16x7 47.38x27
 met remise als resultaat.
]
40.32-27
 [nogmaals krijgt wit de
 kans tot de volgende zet
 >40.26-21 16x27
 41.32x21 14-19
 42.38-32 10-14
 43.33-28 18-23
 (43...24-29 44.32-27
 19-24 45.44-40 14-19
 46.28-22 29-33
 47.22x13 19x8 48.27-22
 8-13 49.21-16 24-29
 50.48-43 13-19
 51.25-20 19-24
 52.20-15 24-30
 53.15-10 30-34 54.10-5
 34x45 55.22-18 12x23
 56.5x50 29-34 57.43-38
 34-40 58.38-32 3-8
 59.16-11 40-44 60.50x3
 45-50) 44.48-42 24-29
 45.28-22 19-24
 46.44-40 14-20
 47.25x14 24-30
 48.14-10 3-9 49.32-27
 9-14 50.10x28 30-35
 51.28-23 29x18
 52.22x13 35x44]
40...14-19
1-1

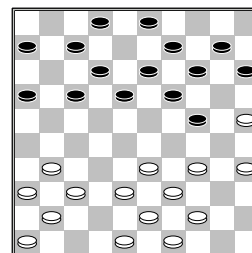
□ Fijen, J.C.G. (Jo)
 ■ Vroom, H.H.J. (Herman)
 Nationale Clubcompl7-10-2015

1.33-29 19-23 2.35-30
14-19 3.30-25 17-22
4.25x14 9x20 5.39-33
4-9 6.44-39 10-14
7.50-44

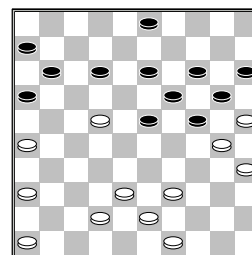


5-10
 [Een idee in deze stand
 is 7...20-25 8.31-26
 14-20 9.37-31 5-10
 10.41-37 20-24
 11.29x20 25x14
 12.46-41 22-28
 13.33x22 18x27
 14.31x22 23-29
 15.34x23 19x17

16.38-33 12-18
 17.42-38 7-12 18.40-34
 1-7 19.37-31 13-19
 20.44-40 8-13 21.41-37
 2-8]
8.29-24 20x29 9.33x24
19x30 10.34x25 11-17
11.38-33 23-29 12.33x24
22-28 13.32x23 18x20
14.40-34 20-24 15.42-38
12-18 16.38-33 7-12
17.47-42 1-7 18.42-38
13-19 19.45-40 8-13
20.40-35

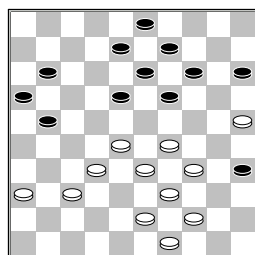


24-30
 [Een goede optie voor
 zwart is 20...15-20
 21.34-30 10-15
 22.33-28 2-8 23.48-42
 7-11 24.31-26 18-23
 25.36-31 23x32
 26.37x28 13-18
 27.39-33 9-13 28.44-39
 18-23 29.28-22 17x28
 30.33x22 12-18
 31.41-36 18x27
 32.31x22 8-12

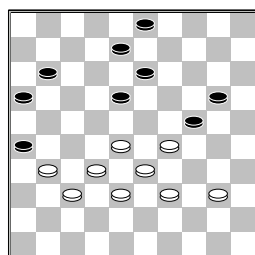


A) 33.36-31 23-29
 34.46-41 29-34
 35.41-36 34-40
 36.35x44 24x35
B) 33.46-41 3-8
 34.36-31 11-17
 35.22x11 16x7
 36.41-36 12-18
 37.38-32 8-12
 38.31-27 12-17
 39.42-38 7-12
 40.49-44 6-11
 41.27-21 11-16
 42.39-33 16x27
 43.32x21 24-29
 44.33x24 20x29
 45.36-31 18-22
 46.21-16 13-18

47.44-39 29-33
 48.38x29 23x34
 49.31-27 22x31
 50.26x37 15-20
 51.37-31 (51.39-33
 20-24 52.30x39 14-20
 53.25x23 18x49)]
21.35x24 19x30 22.37-32
30-35 23.41-37 14-19
24.46-41 10-14 25.33-29
7-11 26.38-33 17-21
27.31-26 2-8 28.26x17
12x21 29.32-28 21-26
30.37-32 16-21 31.41-37
21-27 32.32x21 26x17
33.37-32 17-21 34.48-42
11-16 35.42-37 6-11



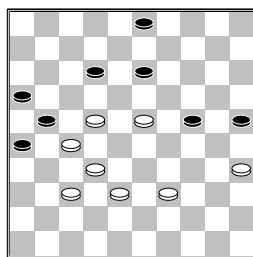
36.43-38
 [een optie is
 36.28-23 19x28
 37.32x12 8x17 38.33-28
 21-26 39.43-38 17-21
 40.39-33 11-17
 41.38-32 13-18
 42.28-23 17-22
 43.23x12 21-27
 44.32x21 26x8]
36...21-26 37.44-40
35x44 38.49x40 19-24
39.29x20 15x24 40.34-29
14-20 41.25x14 9x20
42.36-31



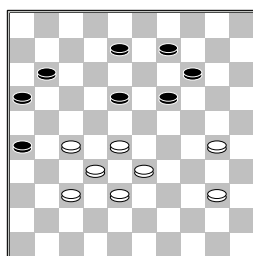
3-9
 [>42...11-17 43.31-27
 17-21 44.28-22 8-12
 45.40-35 13-19
 46.22x13 19x8 47.29-23
 20-25 48.33-28 8-13
 49.28-22

(diagram)

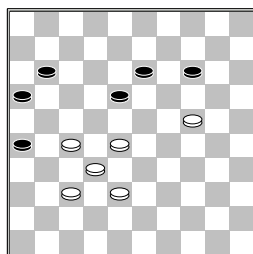
Deze stand komt voor in de database en wint voor wit
 3-8 50.39-33 25-30
 51.23-19 12-18



52.33-28 18-23
 53.19-14 13-19
 54.14-10 30-34 55.10-4
 23-29 56.4-15 34-39
 57.28-23 19x17
 58.27-22 17x28
 59.32x43 uit]
43.31-27 20-25 44.29x20
25x14 45.39-34 13-19
46.34-30



8-12
 [>46...8-13 47.40-35
 14-20 48.30-24 20x29
 49.33x24 19x30
 50.35x24 9-14

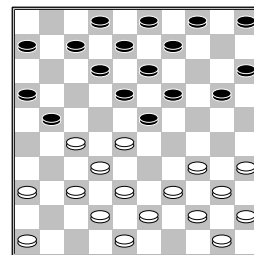


Deze stand komt voor in de database 51.38-33
 14-19 (in de database
 komt de volgende zet voor
 51...11-17 52.33-29
 16-21 53.27x16 18-22
 54.16-11 22x33
 55.29x38 17x6 56.32-28
 6-11 57.38-32 13-18
 58.24-19 14x23
 59.28x19 11-17
 60.19-14 18-23
 61.14-10 23-29 62.10-5
 17-22 63.5-14 29-34
 64.14-23 34-39
 65.23-40 39-43
 66.40-49 26-31)
 52.24-20 11-17
 53.20-15 19-23 54.28x8
 17-22 55.27-21 16x29
 56.8-3 29-34 57.15-10

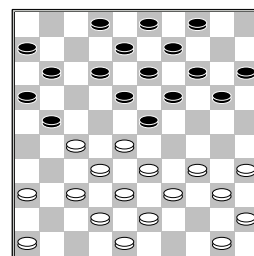
] **47.40-35 9-13 48.33-29**
11-17 49.30-25 17-21
50.38-33 12-17 51.35-30
17-22 52.28x17 21x12
53.33-28 12-17 54.28-22
17x28 55.32x12
2-0

□ Giphart, J. (Hans)
 ■ Tol, van, M. (Micha)
 Nationale Clubcom 17-10-2015

1.32-28 17-21 2.38-32
21-26 3.31-27 11-17
4.37-31 26x37 5.42x31
19-23 6.28x19 14x23
7.43-38 17-21 8.31-26
10-14 9.26x17 12x21
10.49-43 14-19 11.47-42
7-12 12.41-37 1-7
13.33-28



21-26
 [In de database komt de
 volgende variant voor
 13...5-10 14.39-33
 10-14 15.44-39 7-11



A) 16.34-30 20-24
17.37-31 21-26
18.30-25 26x37
19.42x31 12-17
20.40-34
B) 16.35-30 20-24
17.30-25 21-26
18.34-29 23x34
19.40x20 15x24
20.50-44 18-23
21.44-40 4-10
22.39-34 10-15
23.34-29 23x34
24.40x20 15x24
25.37-31 26x37
26.42x31 11-17
27.31-26 13-18
28.46-41 8-13

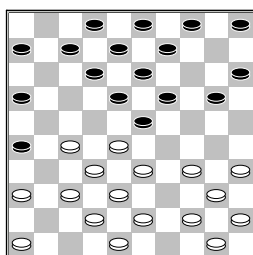
29.41-37 2-7 30.27-21
 16x27 31.32x21 18-23
 32.38-32 7-11
 33.37-31 13-18
 34.32-27 23x32
 35.27x38 9-13
 36.21-16

C) 16.37-31 21-26
 17.50-44 26x37
 18.42x31

C1) 18...12-17
 19.46-41 8-12
 20.31-26 3-8
 21.34-29 23x34
 22.40x29 2-7
 23.36-31 4-10
 24.41-36 19-23
 25.28x19 14x34
 26.39x30 10-14
 27.30-25 17-21
 28.26x17 12x21
 29.33-28 21-26
 30.35-30 26x37
 31.32x41 7-12
 32.38-32

C2) 18...11-17
 19.46-41 17-21
 20.41-37 21-26
 21.35-30 20-24
 22.30-25 4-10
 (22...14-20 23.25x14
 9x20 24.34-29 23x34
 25.40x29 4-9
 26.48-42 2-7?
 27.27-21 16x27
 28.32x21 26x17
 29.28-23 19x28
 30.33x2 24x33)
 23.40-35 24-30
 24.35x24 19x30
 25.28x19 14x23
 26.25-20 15x24
 27.34x25 9-14]

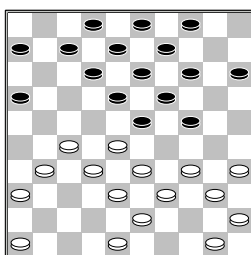
14.39-33



20-24

[In de database komt de volgende stand voor en het ging toen verder met
 14...7-11 15.44-39
 5-10 16.34-30 20-24
 17.30-25 10-14
 18.40-34 11-17
 19.34-30 17-21
 20.45-40 2-7 21.40-34
 14-20 22.25x14 9x20
 23.30-25 4-9 24.25x14

9x20 25.34-30]
15.44-39 5-10 16.37-31
26x37 17.42x31 10-14



deze stand komt voor in de database **18.31-26**

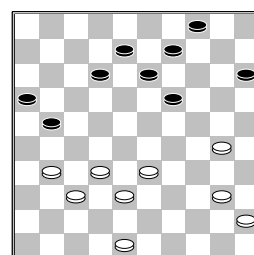
[18.34-30
A) 18...7-11 19.30-25
B) 18...14-20
 19.46-41 9-14
 20.41-37 4-9 21.30-25
 7-11 22.40-34 24-30
 (22...24-29 23.33x24
 20x40 24.45x34 12-17
 25.28-22 17x28
 26.27-21 16x27
 27.31x33 8-12)
 23.35x24 20x40
 24.45x34 11-17
 25.50-45 17-21
 26.45-40 21-26
 27.40-35? 23-29
 28.33x24 (28.34x23
 18x29 29.33x24 19x30
 30.25x34 16-21
 31.27x16 6-11
 32.16x18 13x44)
 28...19x30 29.35x24
 14-20 30.25x14 9x40

] [18.34-29 23x34
 19.40x20 15x24
 20.45-40 18-23
 21.40-34 12-18
 22.31-26 7-12 23.34-30
 2-7 24.46-41 7-11
 25.41-37 4-10 26.30-25
 10-15 27.50-45 14-20
 28.25x14 9x20 29.37-31
 20-25 30.45-40 12-17
 31.40-34 17-22
 32.28x17 11x22
 33.34-30 25x34
 34.39x30 15-20
 35.30-25 22-28
 36.33x22 24-29
 37.25x14 19x10
 38.43-39 10-14
 39.38-33 29x38
 40.32x43]

18...7-11 19.50-44
 [variant die ik berekende is 19.46-41
 11-17 20.34-29
 (20.36-31? 17-22
 21.28x17 12x21
 22.26x17 23-29

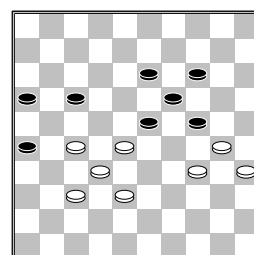
23.34x12 13-18
 24.12x23 19x46)
 20...23x34 21.40x20
 15x24 22.41-37 17-21
 23.26x17 12x21
 24.45-40 21-26
 25.37-31 26x37
 26.32x41]

19...14-20 20.46-41
11-17 21.34-29 23x34
22.40x29 17-21 23.26x17
12x21 24.36-31 2-7
25.41-36 21-26 26.44-40
26x37 27.32x41 8-12
28.38-32 6-11 29.43-38
20-25 30.29x20 25x14
31.35-30 11-17 32.41-37
17-21 33.27-22 18x27
34.28-23 19x28 35.33x31
14-19 36.31-26 3-8
37.26x17 12x21 38.36-31
7-12 39.39-33

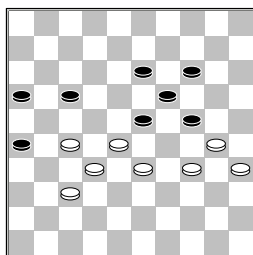


13-18

[39...12-18? 40.30-24
 19x30 41.40-34 30x28
 42.32x14]
40.31-26 18-23
 [40...9-13? 41.26x17
 12x21 42.30-24 19x30
 43.40-34 30x28 44.32x3
]
 [40...12-17? 41.30-24
 19x30 42.40-34 30x28
 43.32x14]
 [40...19-23 41.26x17
 12x21 42.30-24 21-27
 43.32x21 16x27
 44.33-29 23x34
 45.40x29 9-14 46.38-33
 8-12 47.37-32 27x38
 48.33x42]
41.26x17 12x21 42.40-35
9-13 43.48-42 8-12
44.37-31 15-20 45.33-28
20-24 46.31-27 12-17
47.45-40 21-26 48.42-37
4-9 49.40-34 9-14



50.38-33



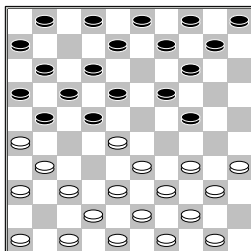
[>50.27-22 16-21
 51.22x11 21-27
 52.32x21 23x41 53.11-7
 26x17 54.7-1 17-21
 55.38-33 24-29
 56.33x24 41-46
 57.34-29 21-26 58.1-6
 46-41 59.6-22 41-36
 60.22x25 36-4 61.24x13
 4x45]

50...14-20

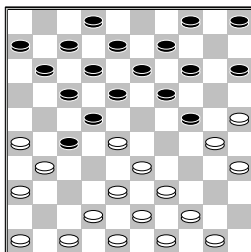
[>50...13-18
A) 51.30-25 14-20
 52.25x14 19x10
 53.28x30 17-22
 54.32-28 22x42
 55.33-29 26-31
 56.28-23 18-22
 57.23-19 31-36 (In
 de database komt de
 volgende zet voor
 57...42-47 58.30-24
 22-28 59.19-13 28-33
 60.29x38 47x20
 61.13-8 31-36 62.8-3
 20-25 63.3-8 25x48
 64.8-19 10-15
 65.19-32 15-20
 66.35-30 48x25
 67.32-38) 58.19-13
 42-47 59.29-24 47x20
 60.13-8 36-41
B) 51.37-31 26x37
 52.32x41 23x21
 53.34-29 14-20
 54.30-25 19-23
 55.25x14 23x34
 56.14-10 18-23
 57.10-4 21-26
 58.41-37 24-30
 59.35x24 34-40
 60.4-10 26-31
 (60...23-29 61.33-28
 29x20 62.37-31 26x37
 63.28-22 17x28
 64.10x46) 61.10x6
 31x42]
51.37-31 26x37 52.32x41
23x21 53.30-25 21-27
54.25x23 27-31 55.34-30
31-36 56.30x8 36x47
57.33-28 47-41
1-1

□ Morssink, W. (Wouter)
 ■ Yigitturk, B. (Berke)
 Nationale Clubcomp17-10-2015

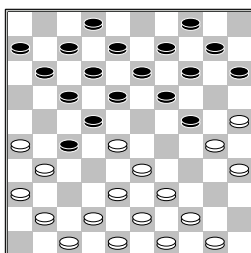
1.32-28 16-21 2.31-26
 11-16 3.36-31 18-22
 4.41-36 7-11 5.34-29
 20-24 6.29x20 15x24
 7.40-34 13-18 8.45-40



10-15 9.34-30 9-13
 10.30-25 1-7 11.40-34
 3-9 12.37-32 21-27
 13.32x21 16x27 14.34-30

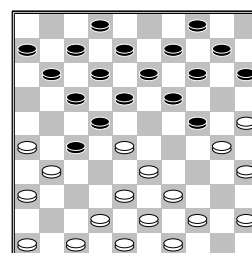


18-23
 [In de database komt de
 volgende variant voor
 14...5-10
A) 15.46-41



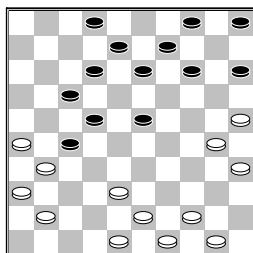
A1) 15...11-16
 16.39-34 7-11
 17.44-40 15-20
 18.34-29 2-7
 19.28-23 19x39
 20.30x19 14x45
 21.25x3
A2) 15...18-23
A2a) 16.50-45 23x32
 17.33-29 24x33
 18.39x37 13-18
 19.30-24 19x30
 20.25x34
A2b) 16.42-37 23x32
 17.37x28 11-16

18.48-42 (18.44-40
 13-18 19.48-42 6-11
 20.39-34 9-13
 21.50-45 15-20
 22.41-37 4-9
 23.26-21 17x26
 24.28x6 27-32
 25.38x27 7-11
 26.6x17 12x41)
 18...13-18 19.50-45
 18-23 20.45-40
 23x32 21.40-34 8-13
 22.34-29 13-18
 23.29x20 15x24
 24.39-34 17-21
 25.26x37 18-23
 26.31x22 23-29
 27.34x23 19x50
 28.30x19
B) 15.50-45



B1) 15...11-16
 16.39-34? 17-21
 17.26x17 12x21
 18.28x26 18-23
 19.31x22 23-29
 20.34x23 19x50
 21.30x19 50x11
B2) 15...18-23
 16.45-40 23x32
 17.33-29 24x33
 18.39x37 19-24
 19.30x19 14x23
 20.44-39 (20.37-32
 11-16 21.32x21 16x27
 22.46-41 6-11
 23.41-37 10-14
 24.35-30 13-19
 25.40-35 9-13
 26.37-32 11-16
 27.32x21 16x27
 28.38-32 27x38
 29.42x33 23-28
 30.44-39 17-21
 31.26x17 12x21
 32.43-38 21-27)
 20...10-14 21.38-32
 27x38 22.42x33 12-18
 23.43-38 7-12
 24.37-32 14-19
 25.31-27 22x31
 26.26x37 9-14]
15.47-41 23x32 16.33-29
24x33 17.39x37 19-23
18.37-32 11-16 19.32x21
16x27 20.42-37 7-11

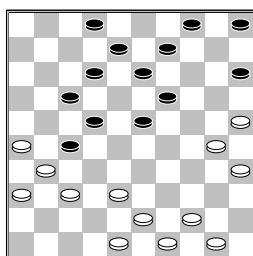
21.37-32 11-16 22.32x21
 16x27 23.41-37 6-11
 24.37-32 11-16 25.32x21
 16x27 26.46-41



14-19

[>26...2-7 27.44-39
 (27.41-37 7-11
 28.37-32 11-16
 29.32x21 16x27
 30.38-32 27x38
 31.43x32 12-18)
 27...7-11 28.41-37
 5-10 29.37-32 11-16
 30.32x21 16x27
 31.48-42 23-28
 32.30-24 13-18
 33.42-37 8-13 34.50-44
 28-32 35.37x28 22x42
 36.31x11 42-47 37.11-6
 47x20 38.26-21]

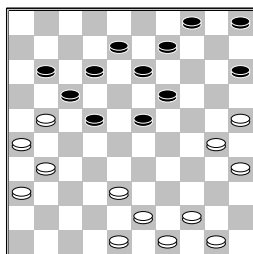
27.41-37



2-7

[27...17-21? 28.26x28
 23x41 29.36x47 27x36
 30.47-41 36x47
 31.30-24 47x20 32.25x3
]

28.37-32 7-11 29.32x21



11-16

[>29...13-18 30.21-16
 9-14 31.16x7 12x1
 32.38-33 15-20
 33.33-29 23x34
 34.30x39 8-13 35.31-27
 22x31 36.36x27 20-24

37.39-33]
 30.38-33 16x27 31.30-24
 19x30 32.25x34 23-28
 33.35-30 28x39 34.44x33
 27-32 35.48-42 12-18
 36.42-38 9-14 37.38x27
 13-19 38.33-29 19-23
 39.27-21 8-12 40.21-16
 4-9 41.31-27 22x31
 42.36x27 23-28 43.43-39
 9-13 44.30-24 14-20
 45.34-30 20-25 46.39-33
 25x23 47.33x11
 2-0