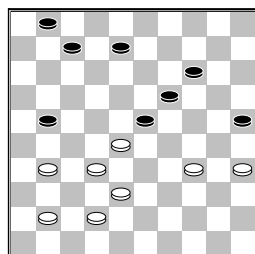


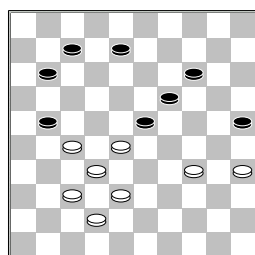
□ Giphart, J. (Hans)
 ■ Schnieders, L. (Linda)
 Nationale Clubcom 30-11-2013

Tja, speel ik mijn eigen
 variant een keer tegen. Was
 eerste en keer

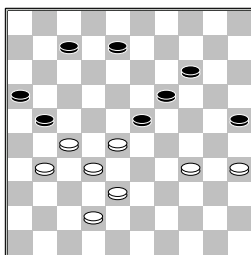
1.32-28 20-25 2.37-32
 14-20 3.41-37 10-14
 4.46-41 5-10 5.31-27
 19-23 6.28x19 14x23
 7.33-28 9-14 8.28x19
 14x23 9.38-33 13-19
 10.33-28 17-22 11.28x17
 11x31 12.36x27 8-13
 13.39-33 4-9 14.44-39
 2-8 15.43-38 10-14
 16.49-43 6-11 17.50-44
 11-17 18.34-30 25x34
 19.40x29 23x34 20.39x30
 20-25 21.44-39 25x34
 22.39x30 17-21 23.45-40
 15-20 24.40-34 20-24
 25.33-29 24x33 26.38x29
 14-20 27.43-38 19-24
 28.30x19 13x33 29.38x29
 8-13 30.48-43 13-19
 31.43-39 9-14 32.39-33
 3-8 33.42-38 18-23
 34.29x18 12x23 35.47-42
 20-25 36.33-28 7-12
 37.27-22 12-17 38.22x11
 16x7 39.37-31



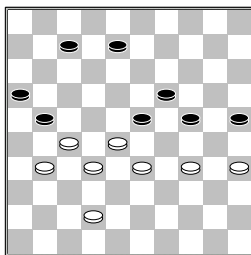
7-11
 [Na 39...21-26
 40.41-36 26x48
 41.28-22 48x30
 42.35x11 25-30
 43.22-17 30-35
 44.17-12 35-40 45.11-7
 40-44 46.7-2 44-49
 47.2-11 14-19 48.11-28
 23-29 49.28x10 29-33
 50.38x29 49x3 en het
 is remise]
 40.41-37 1-7 41.31-27



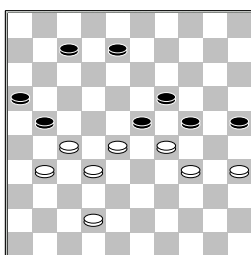
11-16
 [Niet mag 41...21-26
 42.37-31 26x48
 43.27-21 48x30 44.35x2
 14-20 45.28x19 11-16
 46.2x11 16x7 47.19-13
 7-12 48.13-9 20-24
 49.9-4 24-29 50.21-17
 12x21 51.4-18 21-26
 52.18x45 26-31
 53.32-27 31x22
 54.38-32]
 42.37-31



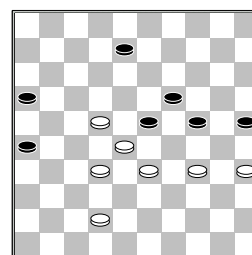
14-20
 [nog steeds mag niet
 42...21-26 43.27-22
 26x48 44.38-33 48x30
 45.35x11 16x7 46.28x10
 met winst]
 43.38-33 20-24



[en weer mag
 43...21-26 niet vanwege
 44.33-29 26x48
 45.29x18 48x30
 46.35x11 16x7 47.18-13
 25-30 48.13-9 30-34
 49.9-3 20-25 50.28-23
 34-39 51.23-19 39-44
 52.19-14 44-50
 53.14-10 25-30 54.3-25
 30-35 55.25-34 7-11
 56.10-4 11-16 57.4-15
 met winnend eindspel]
 44.33-29

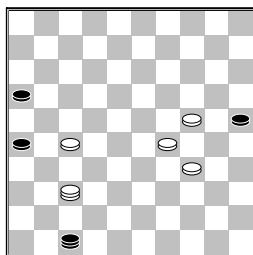


[Na 44.31-26 maakt
 zwart meteen remise door
 A) 44...8-13 45.26x17
 24-30 46.35x24 19x39
 47.28x8 39x48 48.8-3
 en het is remise
 B) 44...7-12 45.26x17
 12x21 46.27-22
 (46.42-37? 25-30
 47.34x25 23-29 met
 winst voor zwart)
 46...21-26

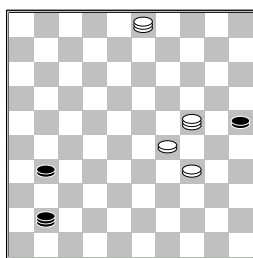


B1) 47.42-37 25-30
 48.34x25 23-29
 49.25-20 29x18
 50.20x29 8-12
 51.29-24 19x30
 52.35x24
 B2) 47.34-30 25x34
 48.33-29 24x33
 49.28x30 23-29
 50.22-18 29-33
 51.30-24 19x30
 52.35x24 33-39
 53.24-19 39-43
 54.42-38 43-48
 55.18-13 8-12
 56.13-9
 B3) 47.33-29 24x33
 48.28x39 26-31
 49.22-17 19-24
 50.39-33 25-30
 51.34x25 23-29
 52.33-28 (52.42-37
 29x27 53.37x26 27-32
 54.26-21 16x27
 55.17-11 32-37
 56.11-7 8-12
 57.7x18) 52...29-34
 53.28-23 34-39
 54.23-18 39-43
 55.32-28 31-36
 56.18-12 43-48
 57.12x3 48x23 58.3-8
 24-29 59.8-24 29x20
 60.25x14 23x10
 61.17-12]
 44...24x22 45.27x29
 7-12 46.31-27 12-18
 47.42-38 8-12 48.38-33
 12-17 49.33-28 21-26
 50.35-30 19-23
 [50...16-21 51.27x16
 26-31 52.29-24 19-23
 53.28x19 31-36

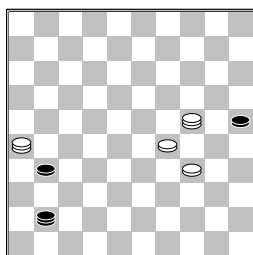
54.19-14 17-21
 (54...36-41 55.32-27
 41-47 56.24-20 47x15
 57.14-9 18-23 58.9-3
 15-29 59.3x21 29x45
 60.16-11 25x34 remise
) 55.16x27 36-41
 56.14-10 41-46 57.10-4
 46x40 58.4x22 25x34
 remise]
 51.28x19 17-22 52.19-14
 22x31 53.14-10 31-36
 54.10-5 36-41 55.32-27
 41-47 56.30-24 18-23
 57.5x37



47-38?
 [Remise is
 >57...47-36 58.37-48
 36x39 59.48x34 26-31
 60.34-48 25-30
 61.48x26 30-35
 62.26-17 35-40 en wit
 wint nooit meer]
 58.27-22 38-21 59.22-18
 21-3 60.37-14 3x20
 61.24x15 26-31 62.15-10
 31-37 63.10-5 37-42
 64.5-19 42-47 65.19-24
 47-41 66.18-12 16-21
 67.12-8 21-27 68.8-3
 27-31



69.3-26?



[>69.3-17 41-10
 70.17-33 10-32

71.33-47 31-36
 72.24-35 En wit wint
 zoals ongeveer in de
 partij gespeeld is]
 69...31-36?
 [>69...41-37 70.24-13
 (70.26-17 31-36
 71.17-33 36-41
 72.33-47 37-48
 73.47x36 remise)
 70...37-48 71.13x36
 48x30 remise]
 70.26-42! nu is het
 helemaal uit 41-28
 71.42-47 28-32 72.24-35
 32-10 73.35-44 10-5
 74.44-50 5-10 75.29-24
 10-5 76.50-45 5-46
 77.24-20
 2-0 (0.01/0.09)