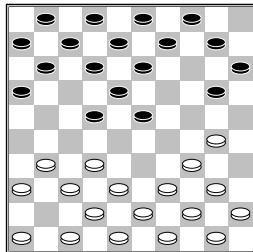


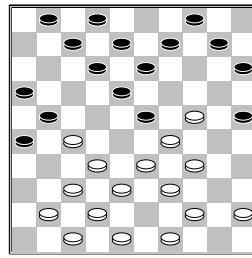
□ Drent, J.M. (Jan Mente)
 ■ Groot, de, G.J. (Gerard)
 Nationale Clubcom 12-03-2016

1.32-28 19-23 2.28x19
 14x23 3.37-32 10-14
 4.41-37 5-10 5.33-28
 17-22 6.28x19 14x23
 7.35-30

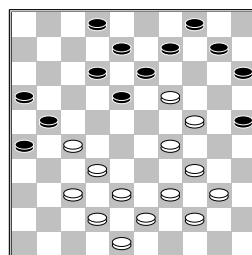


20-25

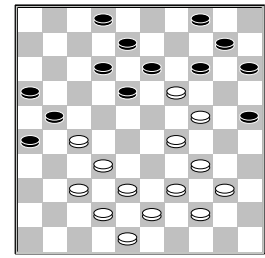
[In de TDAM komt de volgende partij voor
 7...10-14 8.30-25
 13-19 9.40-35 8-13
 (9...9-13 10.34-30 4-9
 11.44-40 11-17
 12.50-44 6-11 13.46-41
 22-27 14.31x22 18x27
 15.32x21 17x26
 16.39-33 11-17
 17.44-39 12-18
 18.37-32 7-12 19.41-37
 17-21 20.30-24 20x29
 21.33x24 19x30
 22.25x34 21-27
 23.32x21 26x17 de
 partij zou later in remise
 eindigen.) 10.45-40
 2-8 11.50-45 11-17
 12.34-29 23x34
 13.40x29 6-11 14.31-26
 1-6 15.37-31 22-28
 16.32x23 19x28
 17.38-33 16-21
 18.33x22 18x27
 19.31x22 17x28
 20.26x17 11x22
 21.35-30 13-19
 22.30-24 19x30
 23.25x34 20-24
 24.29x20 15x24
 25.46-41 6-11 26.41-37
 11-17 27.43-38 9-13
 28.38-33 7-11 29.33-29
 24x33 30.42-38 33x31
 31.36x16 wit wint later
 deze partij.]
 8.39-33 11-17 9.46-41
 6-11 10.44-39 9-14
 11.50-44 3-9 12.31-27
 22x31 13.36x27 17-21
 14.33-29 21-26 15.40-35
 11-17 16.38-33 17-21
 17.30-24 14-19 18.43-38
 19x30 19.35x24
 1-6



[Op 19...12-17 kan
 volgen 20.34-30 23x43
 21.48x39 25x43
 22.44-39 43x34
 23.27-22 17x39
 24.38-33 39x28 25.32x5
 13-19 26.5x40 7-12
 27.40x7 1x12]
 [19...7-11 20.27-22
 18x27 21.29x7 1x12
 22.33-28 9-14 23.41-36
 14-19 24.45-40 19x30
 25.40-35 10-14
 26.35x24 14-19
 27.44-40 19x30
 28.40-35 4-9 29.35x24
 9-14 30.49-43 12-18
 31.39-33 14-19
 32.34-29 19x30
 33.29-23 18x29
 34.33x35 8-12 35.43-39
 15-20 36.39-34 2-8
 37.34-29 20-24
 38.29x20 25x14
 39.35-30 13-19
 40.37-31 26x37
 41.42x22 8-13 42.47-42
 12-18 43.42-37 18x27
 44.37-31 14-20
 45.31x22 20-25
 46.38-33 25x34
 47.22-18 13x22 48.28x6
 34-40 49.6-1 40-45
 50.1-6 met voordelig
 eindspel voor wit.]
20.49-43 12-17 21.33-28
7-12 wit offert een
 schijf om hierna de aanval
 op schijf 27 te openen en
 proberen die te winnen.
22.28x19 17-22 23.41-36
22x31 24.36x27 6-11
25.45-40 11-17 26.47-41
17-22 27.41-36 22x31
28.36x27



9-14



[Zwart kan nu niet
 28...12-17 spelen wegens
 29.29-23 18x20
 30.19-14 10x19
 31.27-22 17x28
 32.32x12 met winst]
29.39-33
 [Een andere optie voor
 wit is nu >29.38-33
 14x23 30.33-28 12-17
 31.28x19 17-22
 32.19-14 10x30
 33.29-23 18x29 34.27x9
 4x13 35.34x23 21-27
 36.32x21 16x27
 37.39-33 8-12 38.43-39
 2-7 39.40-34 7-11
 40.33-29 15-20 met
 spannende stand]
29...14x23 30.33-28?
 [Als wit nu had bemerkt
 wat zwart na het
 achterlopen zou doen had
 hij nog het volgende
 kunnen spelen >30.27-22
 18x27 31.29x7 2x11
 32.34-29 27-31
 33.33-28 21-27
 34.32x21 16x27
 35.38-33 31-36
 36.29-23 8-12 37.37-31
 26x37 38.42x22 13-18
 39.22x13 36-41
 40.28-22 41-47 41.13-8
 47x49 42.8x6 49-38
 43.24-20 15x24
 44.48-43 38x49
 45.40-35 49x40
 46.35x44 24-29 47.6-1
 29-33 48.1-23 33-38
 49.23x5=]
30...2-7 31.28x19 15-20
 ik denk dat nu Jan Mente
 pas heeft bemerkt wat er
 ging gebeuren. Slim
 gespeeld van Gerard,
 verrassende combinatie die
 ik nog nooit heb gezien in
 dit soort
 speltypes/standen.
32.24x15 13x33 33.38x29
25-30 34.34x25 18-22
35.27x18 12x45 36.44-40
45x34 37.43-39 34x43
38.48x39 21-27 39.32x21
16x27 40.39-33 10-14
41.33-29 26-31 42.37x26

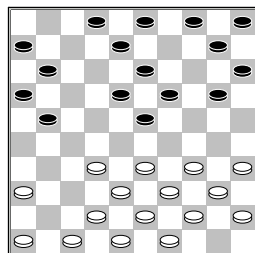
27-32 43.26-21 7-12
0-2

☐ Kok, J. (Jan)

■ Buurke, S.H. (Siep)

Nationale Clubcom12-03-2016

1.32-28 17-22 2.28x17
12x21 3.37-32 7-12
4.41-37 19-23 5.34-30
1-7 6.30-25 11-17
7.40-34 7-11 8.44-40
14-19 9.25x14 9x20
10.31-27 17-22 11.50-44
22x31 12.37x17 12x21



13.46-41

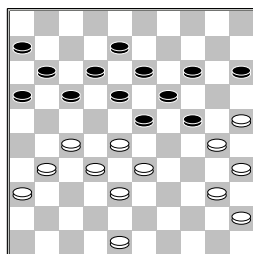
[In TDam komt de volgende variant voor

13.36-31 10-14
14.31-27 4-9 15.33-28
5-10 16.39-33

A) 16...20-24

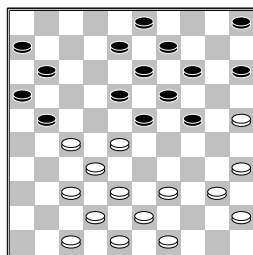
17.34-30 15-20
18.30-25 10-15
19.44-39 11-17
20.46-41 2-7 21.41-37
7-11 22.47-41 24-29
23.33x24 20x29
24.39-33 14-20
25.25x14 9x20
26.33x24 19x30
27.28x19 13x24
28.43-39 8-13
29.49-43 20-25
30.39-33 3-9 31.33-29
24x33 32.35x24 21-26
33.38x29 17-22
34.32-28 22x31
35.41-36 11-17
36.36x27 25-30
37.24x35 18-22
38.27x18 13x24
39.40-34 17-22
40.43-39 22-28
41.42-38 16-21
42.38-32 24-29
43.32x23 29x18
44.34-29 6-11
45.35-30 11-17
46.39-33 21-27
47.45-40 9-14
48.48-42 27-31
49.42-38 31x42
50.38x47 17-22
51.30-24 26-31
52.33-28 22x33
53.29x38 18-23

54.38-32 14-20
55.24-19 23x14
56.32-28 20-24
57.28-23 31-36
58.23-18 24-29
59.18-12 29-33
60.12-8=
B) 16...11-17
17.44-39 2-7 18.42-37
7-11 19.34-30 20-25
20.46-41 25x34
21.39x30 15-20
22.30-25 10-15
23.49-44 8-12
24.44-39 21-26
25.33-29 23x34
26.39x30 18-23
27.47-42 13-18
28.43-39 20-24
29.39-33 9-13
30.41-36 3-8 31.37-31
26x37 32.42x31



17-21 (beter is
32...17-22 33.28x17
12x21 34.27-22 18x27
35.31x22 23-28
36.32x23 19x17
37.30x10 15x4)
33.27-22 18x27
34.31x22 11-17
35.22x11 16x7
36.25-20 14x34
37.40x9 21-27
38.32x21 8-13 39.9x18
12x43 40.48x39 met
winst voor wit]

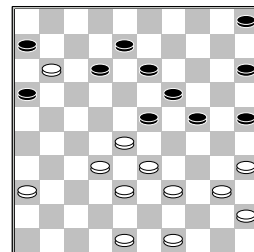
13...10-14 14.41-37
8-12 15.34-29 23x34
16.39x30 2-8 17.30-25
4-9 18.33-28 20-24
19.44-39 18-23 20.36-31
12-18 21.31-27



14-20

[In TDam komt de volgende partij voor
21...21-26 22.39-33

11-17 23.37-31 26x37
24.42x31 5-10 25.31-26
15-20 26.40-34 10-15
27.34-29 23x34
28.27-21 16x27
29.32x23 24-30
30.35x24 20x18
31.49-44 8-12 32.44-40
19-24 33.40x20 15x24
wit won later de partij
]
22.25x14 9x20 23.39-33
20-25 24.47-41 8-12
25.41-36 21-26 26.43-39
3-8 27.37-31 26x37
28.42x31 11-17 29.27-22
18x27 30.31x11



16x7

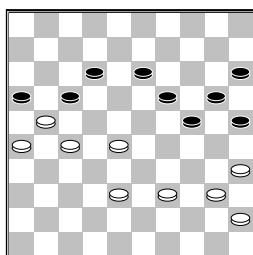
[Ton van Bokhoven en ik waren beide van mening dat zwart de volgende zet zou moeten spelen. Lang hebben we er niet naar gekeken er gebeurde te veel op de overige 30 borden die we bijhielden dat een analyse er niet van gekomen is maar nu maar even kijken
30...6x17 31.36-31
12-18 32.31-27 17-21
33.28-22 5-10 34.49-44

A) 34...15-20
35.39-34 21-26
36.22-17 8-12 37.17x8
13x2 38.48-42 2-8
39.42-37 10-14
40.34-29 23x34
41.40x29 19-23
42.44-40 23x34
43.40x29 8-12
44.32-28 12-17
45.37-32 18-22
46.27x18 14-19
47.18-12 17x8
48.32-27 19-23
49.28x30 25x23
50.45-40 20-24
51.40-34 8-13=
B) 34...10-14?
35.22-17 21x12
36.27-22 18x27
37.32x21 16x27
38.33-28 23x34
39.40x7

C) 34...8-12 35.22-17
21-26 36.17x8 13x2

37.48-42 2-8 38.42-37
 8-13 39.33-28 15-20
 40.39-33 23-29
 41.44-39 18-23
 42.28-22 13-18
 43.22x13 19x8
 44.39-34 8-13
 45.33-28 13-19
 46.28-22 (46.37-31
 26x37 47.32x41 23x43
 48.34x5) 46...10-14
 47.22-18 (47.22-17?
 25-30 48.34x25 29-34
 49.40x18 19-23
 50.18x29 24x11)
 47...23x12 48.34x23
 19x28 49.32x23 14-19
 50.23x14 20x9]

31.36-31 12-18 32.31-27
 7-11 33.48-42 8-12
 34.49-43 11-17 35.42-37
 6-11 36.37-31 5-10
 37.31-26 10-14 38.27-22
 18x27 39.32x21 23x32
 40.38x27 11-16 41.33-28
 14-20 42.43-38



13-18?

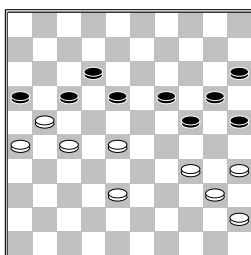
[Beter voor zwart was geweest >42...24-30
 43.35x24 19x30

A) 44.28-23 20-24
 45.40-35 13-18
 46.23-19 24x13
 47.35x24 17-22
 48.39-33 22x31
 49.26x37 16x27
 50.33-29 12-17
 51.38-33 17-21
 52.45-40 21-26
 53.37-32 27x38
 54.33x42 26-31
 55.40-34 31-36
 56.42-37 18-22
 57.29-23 22-27
 58.23-19 13-18
 59.19-14=

B) 44.40-34 20-24
 45.38-33 30-35
 46.45-40 35x44
 47.39x50 24-30
 48.50-45 30x39
 49.33x44 13-19
 50.45-40 25-30
 51.44-39 30-35
 52.40-34 19-24
 53.39-33 15-20

54.34-30 (54.28-23
 12-18 55.23x12 17x8
 56.21-17 20-25
 57.27-22 16-21
 58.17-11 24-30
 59.26x17 30x28
 60.22x33 35-40=)
 54...35-40 55.30x19
 20-24 56.19x30 40-44
 57.30-24 44-49
 58.24-20 49-40
 59.20-14 12-18
 60.21x23 40x36
 61.14-10 16-21
 62.26x17 36-47=]

43.39-34



19-23

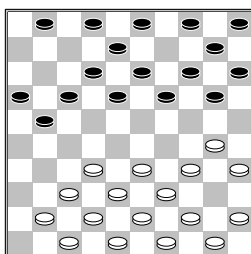
[43...18-23? 44.28-22
 17x28 45.34-30 25x34
 46.40x7]
 44.28x30 17-22 45.30-24
 22x31 46.26x37 16x27
 47.37-32 20x29 48.34x23
 18x29 49.32x21 15-20
 2-0

□ Kalk, H.J. (Henk)

■ Bremmer, W. (Wim)

Nationale Clubcomp12-03-2016

1.32-28 17-21 2.31-26
 11-17 3.37-32 18-22
 4.41-37 7-11 5.37-31
 13-18 6.31-27 22x31
 7.36x27 17-22 8.28x17
 11x31 9.26x37 9-13
 10.46-41 6-11 11.34-30
 11-17 12.40-34

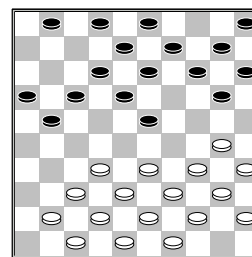


20-25

[12...19-23 13.44-40
 4-9 14.50-44

(diagram)

A) 14...21-27

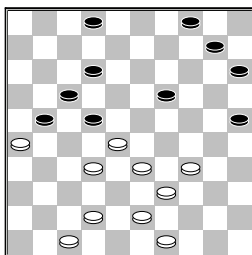


15.32x21 16x27
 16.33-29 14-19
 17.39-33 20-25
 18.44-39 9-14
 19.30-24 19x30
 20.35x24 14-20
 21.37-32 17-21
 22.32-28 23x32
 23.42-37 1-7 24.37x28
 7-11 25.41-37 11-16
 26.38-32 27x38
 27.33x42 10-14
 28.43-38 14-19
 29.40-35 19x30
 30.35x24 12-17
 31.45-40 8-12
 32.37-31 21-26
 33.38-32 26x37
 34.42x31 5-10
 35.48-42 10-14
 36.42-38 2-8 37.47-41
 17-22 38.28x17 12x21
 39.32-28 8-12
 40.41-37 14-19
 41.40-35 19x30
 42.35x24 12-17
 43.31-26 21-27
 44.39-33 3-9 45.24-19
 13x24 46.37-32 16-21
 47.34-30 25x23
 48.28x30 18-23
 49.49-44 23-29
 50.33x24 20x29
 51.32-28 17-22
 52.26x17 22x42
 53.30-25 42-47
 54.17-11 9-13 55.11-7
 27-31 56.44-39 31-36
 57.39-34 29x40 58.7-2
 40-45 59.2x35=
 B) 14...2-7 15.30-25
 7-11 16.34-29 23x34
 17.40x29
 B1) 17...20-24
 18.29x20 15x24
 19.39-34 21-27
 20.32x21 16x27
 21.43-39 10-15
 22.48-43 1-7
 23.33-28 24-30
 24.35x24 14-20
 25.25x14 9x40
 26.45x34 5-10
 27.34-29 10-14
 28.38-33 18-22
 29.39-34 14-19
 30.44-39 15-20

31.37-32 27x38
 32.43x32 19-24
 33.41-37 22-27
 34.32x21 17x26
 35.42-38 3-9
 36.49-44 11-17
 37.28-23 26-31
 (37...13-18? 38.23-19
 24x13 39.37-31 26x37
 40.38-32 37x28
 41.33x2) 38.37x26
 13-18 39.44-40 18-22
 en wit won
B2) 17...21-27
 18.32x21 17x26
 19.44-40 11-17
 20.35-30 17-21
 21.40-35 1-7
 22.37-32 21-27
 23.32x21 16x27
 24.41-37 27-31
 25.38-32 13-19
 26.30-24 19x30
 27.25x34 14-19
 28.34-30 8-13
 29.42-38 31x42
 30.48x37 20-24
 31.29x20 15x24
 32.45-40 (zelf had
 ik in deze stand
 32.32-27 gespeeld
 18-22 33.27x18 13x22
 34.37-32 22-27
 35.32x21 26x17
 36.47-42 12-18
 37.38-32 10-14
 38.49-44) 32...10-14
 33.40-34 5-10
 34.34-29 18-22
 35.29x20 14x34
 36.39x30 19-23
 37.47-41 12-17
 38.32-28 23x32
 39.38x18 13x22
 40.43-38 17-21
 41.49-43 21-27
 42.43-39 9-13
 43.39-34 7-11
 44.30-24 10-14
 45.35-30 13-18
 46.30-25 3-9
 47.34-29 11-16
 48.24-20 9-13
 49.20x9 13x4
 50.25-20 18-23
 51.29x18 22x13
 52.20-14 13-18
 53.33-28 tot remise
 besloten]

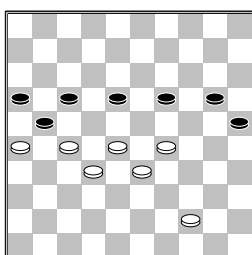
13.30-24 19x30 14.35x24
3-9 15.44-40 1-7
16.50-44 7-11 17.32-28
14-20 18.37-32 20x29
19.33x24 10-14 20.39-33
5-10 21.44-39 21-27
22.32x21 17x26 23.41-37
11-17 24.38-32 18-22

25.37-31 26x37 26.42x31
16-21 27.31-26 14-19
 het zwart plan is nu
 vleugel uitdunnen en dan
 schijf 24 afruilen en
 proberen het witte centrum
 te omknellen. Wit moet dus
 op zijn tellen zijn. Bij
 zwart moet alles kloppen
 zoniet dan overloopt wit
 zwart **28.40-35 19x30**
29.35x24 9-14 30.45-40
14-19 31.40-35 19x30
32.35x24 13-19 33.24x13
8x19 34.48-42

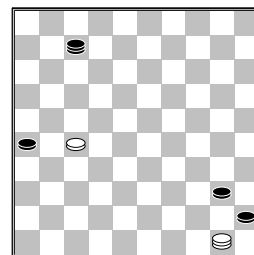


15-20
 [Ton van Bokhoven en ik
 waren achter de pc van
 mening dat dit een goede
 zet zou kunnen zijn om het
 speelplan voort te zetten
 in plaats van de tekstzet.
 34...12-18 Het plan wat
 wit nu heeft is schijf 21
 gaan aanvallen. Zwart moet
 goed en direct handelen
 anders gaat het fout.
 35.47-41

A) 35...2-7 deze moet
 wel 36.41-36 7-11
 37.42-37 11-16
 38.34-29 19-24
 39.29x20 15x24
 40.39-34 10-14
 41.37-31 14-19
 42.43-39 4-10
 43.31-27 22x31
 44.26x37 (minder
 goed voor wit is
 44.36x27 nu gaat de
 omsingeling kans van
 slagen kunnen krijgen.
 24-30 45.49-44 10-15
 46.44-40 30-35
 47.34-29 35x44
 48.39x50 15-20
 49.50-44

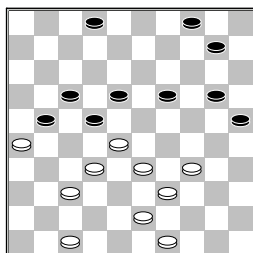


deze stand komt voor in
 de database van
 Turbodatabase 25-30
 50.44-39 30-35
 51.39-34 20-25
 52.27-22 18x38
 53.33x42 17-22
 54.26x17 22x24
 55.17-12 24-30
 56.34-29 30-34
 57.29x40 35x44
 58.12-7 44-49 59.7-1
 16-21 60.1-7 19-24
 61.42-37 21-26
 62.7-16 49-44
 63.16-49 44-22
 64.49-40 24-30
 65.37-32 30-35
 66.40-29 22-4
 67.29-33 35-40
 68.33-6 40-45 69.6-50
 4-13 70.50-6 13-18
 71.6-50 18-4 72.50-6
 4-9 73.6-50 25-30
 74.50-39 9-25
 75.39-50 25-9
 76.50-39 30-35
 77.39-50 35-40
 78.50-6 9-13 79.6-50
 13-18 80.50-6 18-1
 81.6-50 1-7 82.32-27

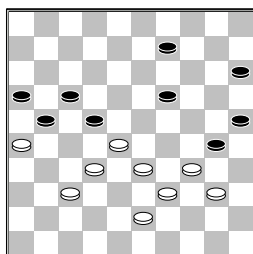


7-1 83.50-6 26-31
 84.27x36 45-50
 85.36-31 50-44
 86.6x50 1-6 uit)
 44...21-26 45.36-31
 17-21 46.31-27 10-15
 47.49-43 24-30
 48.34-29 19-24
 49.29x20 25x14
 50.43-38 30-35
 51.39-34 14-19
 52.34-29 19-24
 53.29x20 15x24
 54.28-22 35-40
 55.22x13 40-44
 56.27-22 44-50
 57.32-28 50-44
 58.13-9 44-35
 59.28-23 35-49
 60.23-18 49x41 61.9-4
 41-47 62.18-13 47x29
 63.13-8 met remise
B) eerst 35...15-20
 dan volgt 36.41-36 en
 dan nu 2-7 37.42-37

7-11 (37...22-27
 38.28-23 27x40
 39.23x1 40-45
 40.49-44 45-50
 41.1-45 21-27
 42.39-34 50x31
 43.26x37 20-24
 44.45-50 24-30
 45.50x6 30x39 46.6x50
 25-30 47.50-45 30-35
 48.45-12=) 38.43-38
 uit]
35.42-37 12-18

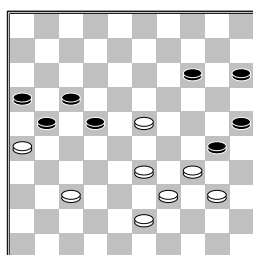


36.37-31
 [36.47-41
A) 36...22-27
 37.34-29 27x38
 38.43x32 20-24
 39.29x20 25x14
 40.37-31 17-22
 41.28x17 21x12=
B) 36...2-7 37.41-36
 18-23 (37...7-11
 38.43-38 uit)
 38.37-31 20-24
 39.31-27 22x31
 40.36x16 4-9 41.49-44
 9-13 42.32-27 23x21
 43.16x27 13-18
 44.43-38 17-22
 45.38-32 22x31
 46.26x37 7-12=]
36...2-7 37.31-27 22x31
38.26x37 20-24 39.47-41
 7-11 40.41-36 11-16
 41.36-31 18-22 42.31-26
 4-9 43.49-44 10-15
44.44-40 24-30

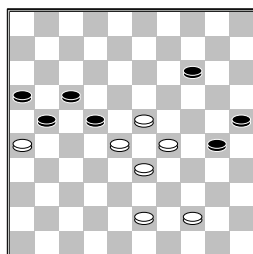


45.28-23
 [45.40-35? 19-23
 46.35x24 22-27
 47.28x19 27x40]
 [45.43-38 30-35
 46.28-23 35x44
 (46...19x28 47.32x23
 35x44 48.39x50 9-14

49.50-45 15-20
 50.33-29 22-27
 51.37-32 14-19
 52.23x14 20x9 53.29-24
 17-22 54.26x28 27-31
 55.24-19 31-36
 56.28-23 36-41
 57.38-33 16-21
 58.33-28 41-47=)
 47.23x3 44-49 48.37-31
 49-35 49.32-27 21x43
 50.3x49 15-20 51.33-29
 35-2 52.39-33 2-11
 53.49-35 25-30
 54.35x27 11x25
 55.29-23 25-34
 56.27-18 34-48=]
45...19x28 46.32x23
9-14



47.37-32
 [een betere variant
 voor wit is misschien wel
 >47.43-38 21-27
 48.37-32 16-21
 49.23-19 14x23
 50.40-35 23-29
 51.34x23 30-34
 52.39x30 25x34
 53.23-19 15-20
 54.19-13 20-24 55.13-9
 24-30 56.35x24 34-40
 57.9-4 40-44 58.24-20
 44-50 59.32-28 50-45
]
47...30-35 48.34-29
35x44 49.39x50 25-30
50.32-28 15-20 51.50-44
20-25

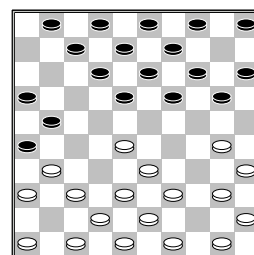


52.43-38
 [52.44-40 30-35
 53.43-39 35x44
 54.39x50 25-30
 55.50-45 21-27
 56.26-21 17x26
 57.28x17 26-31
 58.17-12 31-37 59.12-8

37-42 60.8-2 42-48
 61.2x35 27-32 62.35-40
 14-20 (met de
 volgende zet forceerd
 zwart winst voor wit
 62...32-38 63.33x42
 48x19 64.40-35 uit)
 63.23-18 32-38
 64.33x42 48x13=]
 [52.43-39 14-20
 53.23-18 22x13
 54.28-22 17x28
 55.33x22 21-27
 56.22x31 20-24
 57.29x20 25x14=]
52...14-20 53.38-32
30-35 54.23-19 25-30
55.19-13 20-24 56.29x20
30-34 57.13-9 21-27
58.32x12 34-39 59.28x17
39x50
 1-1

□ Eenennaam, van, F.A. (F)
 ■ Groot, de, K. (Kor)
 Nationale Clubcompl2-03-2016

1.32-28 17-21 2.37-32
 21-26 3.41-37 11-17
 4.28-23 19x28 5.33x11
 6x17 6.39-33 14-19
 7.44-39 10-14 8.32-28
 17-21 9.34-30

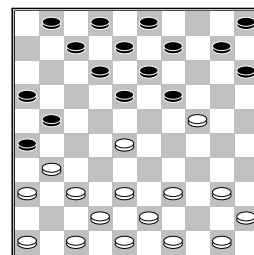


4-10
 [9...20-25
A) 10.50-44 25x34
 11.39x30 14-20
 12.43-39 18-23
 13.37-32 26x37
 14.42x31 21-26
 15.49-43 26x37
 16.32x41 23x32
 17.38x27 20-25
 18.41-37 25x34
 19.39x30 15-20
 20.37-32 12-18
 21.46-41 7-12
 22.47-42 18-23
 23.42-38 2-7 24.48-42
 12-18 25.41-37 7-11
 26.37-31 5-10
 27.30-25 20-24
 28.33-29 24x33
 29.38x29 23x34
 30.40x29 10-14
 31.35-30 1-7 32.45-40
 11-17 33.30-24 19x30

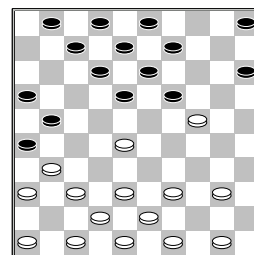
34.25x34 17-21
 35.43-38 14-19
 36.44-39 18-22
 37.27x18 13x22
 38.31-27 22x31
 39.36x27 8-13
 40.29-24 19x30
 41.34x25 7-12
 42.39-33 12-18
 43.33-28 13-19
 44.38-33 19-24
 45.42-37 9-13
 46.37-31 21-26
 47.40-34 26x37
 48.32x41 4-10
 49.34-29 10-15
 50.29x20 15x24
 51.28-22 18-23
 52.22-17 23-29
 53.33-28 29-34
 54.17-12 13-18
 55.12x23 34-39
 56.23-18 39-44
 57.18-12 44-50
 58.28-23 50-45
 59.25-20 45x47
 60.20x29 47x24
 61.12-7 24-29
B) 10.30-24 19x30
 11.35x24 5-10
 12.40-34 12-17
 13.45-40 8-12
 14.37-32 26x37
 15.32x41 (15.42x31
 3-8 16.50-45 14-19
 17.40-35 19x30
 18.35x24 10-14
 19.45-40 21-26
 20.47-42 26x37
 21.42x31 17-22
 22.28x17 12x21
 23.32-28 21-26
 24.38-32 26x37
 25.32x41 14-19
 26.40-35 19x30
 27.35x24 9-14
 28.34-29 14-19
 29.43-38 19x30
 30.29-23 18x29
 31.33x35) 15...3-8
 16.41-37 18-22
 17.50-45 14-20
 18.49-44 20x29
 19.33x24 22x33
 20.39x28 10-14
 21.43-39 12-18
 22.38-33 7-12
 23.37-32 21-26
 24.36-31 26x37
 25.32x41 18-22
 26.33-29 22x33
 27.29x38 13-19
 28.24x13 9x18
 29.41-37 4-9 30.46-41
 9-13 31.37-32 16-21
 32.41-37 1-7 33.39-33
 17-22 34.44-39 7-11

35.47-41 11-17
 36.41-36 21-27
 37.32x21 17x26
 38.37-31 26x37
 39.42x31 18-23
 40.31-27 22x31
 41.36x27 13-18
 42.38-32 2-7 43.33-28
 14-19 44.48-42 8-13
 45.42-38 15-20
 46.39-33 20-24
 47.34-29 23x34
 48.40x20 25x14
 49.33-29]
 [9...20-24 10.30-25
 12-17 11.37-32 26x37
 12.32x41 7-12 13.40-34
 21-26 14.41-37 17-21
 15.45-40 12-17
 16.50-45 17-22
 17.28x17 21x12
 18.46-41 1-7 19.34-30
 7-11 20.33-28 11-17
 21.39-33 17-22
 22.28x17 12x21
 23.33-28 18-22
 24.28x17 21x12
 25.38-33 13-18
 26.43-38 9-13 27.49-43
 12-17 28.36-31 8-12
 29.31-27 4-9 30.37-32
 17-21 31.33-28 12-17
 32.38-33 18-23
 33.43-39 13-18
 34.41-37 17-22
 35.28x17 21x12
 36.37-31 26x28 37.33x4
]
 [9...18-23 10.37-32
 26x37 11.42x31 20-24
 12.47-42 12-18
 13.31-27 7-12 14.46-41
 1-6 15.41-37 2-7
 16.30-25 21-26
 17.50-44 7-11 18.40-34
 11-17 19.44-40 17-22
 20.28x17 12x21
 21.33-28 14-20
 22.25x14 9x20 23.39-33
 4-9 24.43-39 5-10
 25.49-43 10-14
 26.34-29 23x34
 27.39x30 18-23
 28.30-25 13-18
 29.43-39 9-13 30.39-34
 24-29 (30...24-30
 31.35x24 19x39
 32.28x10 39x28
 33.32x12 21x43
 34.48x39 15x4 35.25x14
 8x17 36.40-34 6-11
 37.34-29 17-22)
 31.33x24 19x39
 32.28x10 15x4 33.25x14
 4-9 34.36-31 9x20
 35.40-34 39x30
 36.35x15]

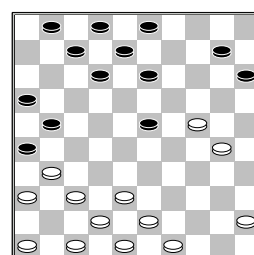
10.30-24 20x29 11.33x24
 19x30 12.35x24 14-19



13.40-35
 [een andere
 mogelijkheid voor wit is
 13.40-34 19x30
 14.34x25 15-20
 15.25x14 10x19
 16.38-33 5-10 17.37-32
 26x37 18.42x31 10-15
 19.46-41 21-26
 20.41-37 12-17
 21.31-27 18-22
 22.27x18 13x22
 23.47-42 7-12 24.37-31
 26x37 25.42x31]
13...19x30 14.35x24
10-14 15.45-40 14-19

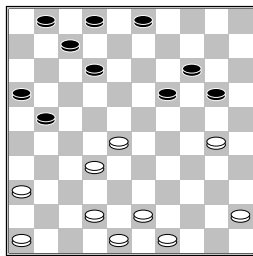


16.40-35
 [een andere optie is
 16.40-34 19x30
 17.34x25 5-10 18.37-32
 26x37 19.42x31 10-14
 20.39-33 14-19
 21.46-41 18-23
 22.41-37 12-18
 23.31-27 8-12 24.43-39
 15-20 25.25x14 9x20
 26.47-42 2-8 27.50-44
 20-24 28.44-40 7-11
 met gelijkwaardige stand
]
16...19x30 17.35x24
9-14 18.39-34 5-10
19.50-45 18-23 20.28x19
14x23 21.34-30



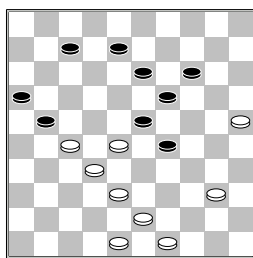
13-19

[Een optie voor zwart is
 21...23-28 22.47-41
 10-14 23.31-27 21x32
 24.38x27 13-18
 25.45-40 8-13 26.30-25
 1-6 27.40-35 6-11
 28.43-38 3-9 29.49-44
 2-8 30.35-30 18-22
 31.27x18 12x23
 32.44-40 11-17
 33.37-32 28x37
 34.42x31 26x37
 35.41x32 14-19
 36.40-34 9-14 37.34-29
 23x34 38.30x39 19x30
 39.25x34 met
 gelijkwaardige stand.]
22.24x13 8x19 23.38-33
10-14 24.47-41 15-20
25.33-28 23x32 26.37x28
26x37 27.41x32



12-18

[Beter voor zwart is
 27...20-25 28.49-44
 25x34 29.44-40 14-20
 30.40x29 12-18
 31.43-38 7-12 32.36-31
 1-7 33.45-40 18-23
 34.29x18 12x23
 35.38-33 2-8 36.31-27
 8-13 37.48-43 20-24
 38.43-39 7-12 39.46-41
 12-18 40.42-38 3-9
 41.40-35 9-14 42.28-22
]
28.30-25 7-12 29.36-31
2-8 30.31-27 8-13
31.46-41 20-24 32.41-37
18-23 33.37-31 vanaf nu
 komt wit per zet beter te
 staan **3-8 34.31-26**
1-7 35.26x17 12x21
36.42-38 24-29 37.45-40

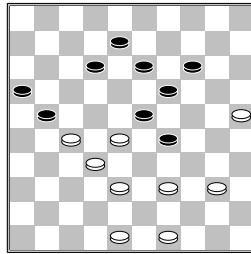


7-12

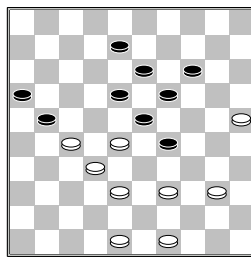
[Beter voor zwart is

>37...13-18 38.40-35
 8-12 39.35-30 14-20
 40.25x14 19x10
 41.28x19 18-22
 42.27x18 12x14 met
 gelijkwaardige stand]

38.43-39



12-18?



[beter voor zwart is nu
 >38...14-20 39.25x14
 19x10 40.28x19 13x24
 41.39-34 8-13 42.34x23
 13-18 43.49-44 18x29
 44.44-39 12-18
 45.39-34 18-23
 46.27-22 10-14
 47.48-43 14-20
 48.32-27 21x32
 49.38x27 29-33
 50.22-17 20-25
 51.40-35 33-39
 52.43-38 39x30 met
 gelijkwaardige stand]

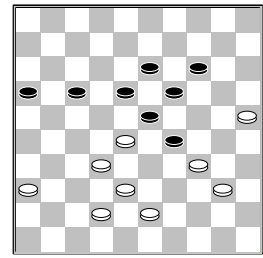
39.39-34?

[wit vergeet te winnen
 door >39.27-22 18x27
 40.39-33 14-20
 (40...27-31 41.33x24
 19x30 42.28x10 31-36
 43.25x34 36-41
 44.10-5) 41.33x15
 21-26 42.32x21 23x43
 43.49x38 16x27
 44.15-10 27-31 45.10-5
 8-12 46.5x1 31-36
 47.1-23 uit]
39...8-12 40.48-42
21-26 41.49-43 26-31
42.27x36 12-17

(diagram)

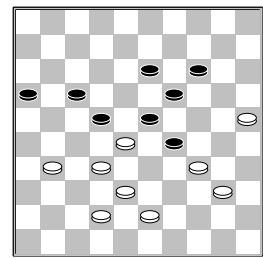
43.36-31

[wit kan winnen door
 43.25-20 14x25



44.32-27 23x21
 45.34x14 13-19
 46.14x12 17x8 47.40-35
 21-27 48.42-37 8-13
 49.37-31]

43...18-22

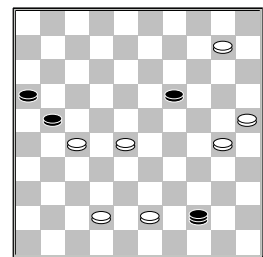


44.40-35

[een andere optie is
 44.31-26 22x33
 45.40-35 29x40
 46.38x20 40-45
 47.20-15 45-50
 48.15-10 17-21
 49.26x17 50x11 50.10-4
 11-17 51.32-27 19-24
 52.4-18 17-6 53.18-4
 6-17 54.42-38 24-29
 55.25-20 17-28
 56.20-15]

44...22x33 45.35-30

29x40 46.38x20 40-45
47.20-15 45-50 48.15-10
17-21 49.31-27 50-44
50.32-28

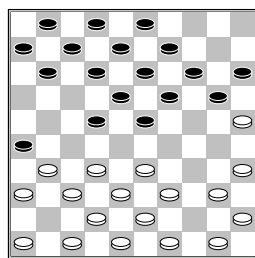


Deze zet verdient een
 Diagram **44x34 51.30x39**
19-23 52.10-4 23-28
53.4-36 28-32 54.36-41
2-0

□ Knipper, J.J. (Jaap)
 ■ Malahé, P.M. (Pertap)
 Nationale Clubcom12-03-2016

1.32-28 19-23 2.28x19
14x23 3.37-32 10-14

4.41-37 16-21 5.34-30
 21-26 6.30-25 14-19
 7.25x14 9x20 8.40-34
 5-10 9.34-30 10-14
 10.30-25 4-9 11.44-40
 17-22

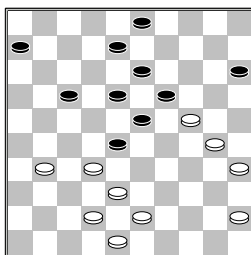


12.50-44

[12.40-34 22-27
 13.31x22 18x27
 14.32x21 26x17
 15.50-44 12-18
 16.34-30 7-12 17.37-32
 1-7 18.46-41 17-22
 19.41-37 11-17
 20.47-41 22-27
 21.32x21 17x26
 22.37-32 7-11 23.41-37
 12-17 24.30-24 20x29
 25.33x24 19x30
 26.25x34 13-19
 27.39-33 8-13 28.44-39
 17-22 29.35-30 11-17
 30.30-25 6-11 31.45-40
 17-21 32.34-30 11-16
 33.30-24 19x30
 34.25x34 14-19
 35.49-44 9-14 36.33-28
 22x33 37.38x29 14-20
 38.42-38 21-27
 39.32x21 16x27
 40.48-42 2-7 41.37-32
 7-11 42.32x21 26x17
 43.38-32 20-25
 44.40-35 15-20
 45.42-37 20-24
 46.29x20 25x14
 47.34-29 23x34
 48.39x30 14-20
 49.44-39 20-24
 50.39-33 18-23
 51.43-38 11-16 later
 werd deze partij remise
]

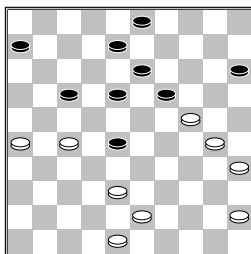
12...11-17 13.33-28
 22x33 14.39x28 7-11
 15.44-39 17-22 16.28x17
 11x22 17.31-27 22x31
 18.36x27 12-17 19.46-41
 6-11 20.39-33 1-6
 21.43-39 8-12 22.41-36
 17-22 23.47-41 22x31
 24.36x27 12-17 25.40-34
 20-24 26.34-30 2-8
 27.49-43 17-22 28.41-36
 22x31 29.36x27 24-29
 30.33x24 14-20 31.25x14

9x29 32.39-33 11-17
 33.33x24 17-22 34.27-21
 26x17 35.37-31 22-28



36.31-27

[niet mag natuurlijk
 36.42-37 28-33
 37.38x29 23x25]
 [Ook niet mag
 36.32-27 28-33
 37.38x29 23x25]
 [Een andere optie voor
 wit is 36.31-26 28x37
 37.42x31 3-9 38.31-27
 8-12 39.30-25 19x30
 40.25x34 23-28
 41.48-42 6-11 42.42-37
 11-16 43.43-39 9-14
 44.45-40 17-22
 45.37-31 14-20
 46.35-30 16-21
 47.26x19 18-23
 48.27x29 20-24
 49.29x20 15x42=]
36...28x37 37.42x31
23-28 38.31-26

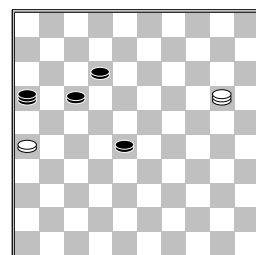


8-12

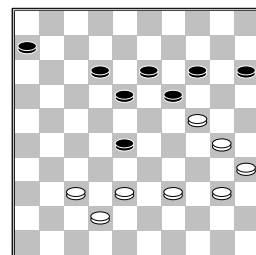
[38...6-11 39.43-39
 8-12 40.27-21 3-9
 41.30-25 19x30
 42.35x24 9-14 43.45-40
 18-22 44.21-16 13-18
 45.16x7 12x1 46.40-35
 14-19 47.24x13 18x9
 48.35-30
A) 48...22-27
 49.39-33 28x39
 50.38-32 27x38
 51.48-42 38x47
 52.30-24 47x20
 53.25x3 17-22
 54.26-21=
B) 48...1-7 49.30-24
 22-27 50.39-34 7-12
 51.34-29 28-32
 52.24-20 15x42
 53.48x28 9-14

54.28-23 27-32
 55.23-19 14x23
 56.25-20 32-37
 57.20-14 37-41
 58.14-9 41-46 59.9-3
 46-32

B1) 60.3-25 32-28
 61.25-34 12-18
 62.34-43 23-29
 63.43-38 28-33
 64.38-27 17-22
 65.27-36 29-34
 66.26-21=
B2) 60.3-14 23-28
 61.26-21 (61.14-25
 32-16 62.25-20



Deze stand komt voor in de database van TDAM
 12-18 63.20-15 18-23
 64.15-20 16-11
 65.20-38 11-6
 66.38-21 17-22
 67.21-38 Hier is tot remise besloten)
 61...17x26 62.14-3
 12-18 63.3-9 18-23
 zwart wint]
39.48-42 17-22 40.43-39
22x31 41.26x37 3-9
42.45-40 9-14



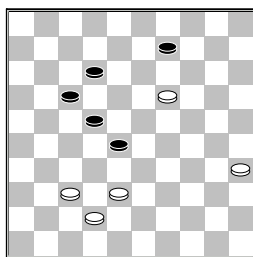
43.30-25

[Probleemloos remis is
 43.39-33 28x39
 44.30-25 19x30
 45.25x43]
43...19x30 44.35x24
6-11 45.40-35 11-17
46.39-34 18-22 47.34-30
14-19 48.25-20 13-18
49.24x13 15x24 50.30x19
18x9

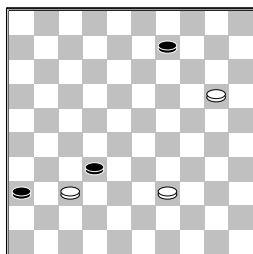
(diagram)

51.37-31

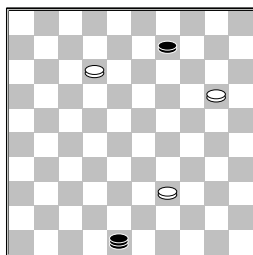
[Dit lijkt remise maar



straks komt de aap uit de mouw 51.19-13? 9x18
 52.35-30 22-27
 53.30-24 18-22 en wit moet nog meer schijven offeren 54.37-31 27x36
 55.42-37 22-27 uit]
51...9-13 52.19x8 12x3
53.42-37 17-21 54.35-30
21-27 55.30-25 27x36
56.25-20 3-9 57.38-32
28-33 58.32-28 22-27
59.28x39 27-32

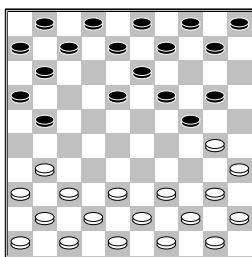


Deze stand komt voor in de eindspel database en is in alle varianten remise
60.37x28 36-41 61.28-22
41-46 62.22-18 46-37
63.18-12 37-48

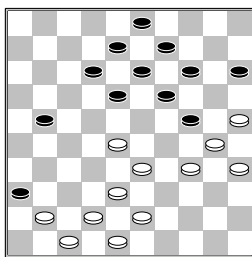


64.20-14=
 [Enige zet waarmee wit het nog fout kan doen
 64.20-15 48x1 65.15-10
 9-14 66.10x19 1-18
 67.19-14 18-4 uit]
1-1

□ Yigitturk, B. (Berke)
 ■ Dollekamp, B.A. (Bert)
 Nationale Clubcompl2-03-2016
1.33-29 20-24 2.29x20
15x24 3.34-30 14-20
4.32-28 17-22 5.28x17
12x21
6.31-27

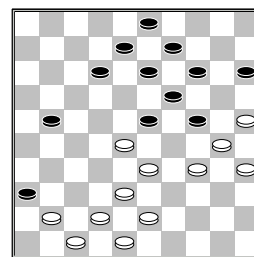


[In de database komt de volgende partij voor
 6.30-25 19-23 7.25x14
 10x19 8.31-26 7-12
 9.26x17 12x21 10.39-33
 1-7 11.33-28 23x32
 12.37x28 7-12 13.40-34
 2-7 14.44-39 11-17
 15.41-37 7-11 16.46-41
 5-10 17.39-33 21-26
 18.34-29 10-14
 19.29x20 14x25
 20.45-40 17-22
 21.28x17 11x22
 22.40-34 12-17
 23.37-32 17-21
 24.41-37 19-23
 25.34-29 23x34
 26.33-28 22x33
 27.38x40 18-23
 28.47-41 21-27
 29.32x21 26x17
 30.50-45 deze partij eindigde in remise]
6...21x32 7.37x28 20-25
8.39-33 25x34 9.40x20
10-15 10.20-14 9x20
11.41-37 7-12 12.44-39
11-17 13.45-40 6-11
14.40-34 5-10 15.46-41
16-21 16.34-30 21-26
17.30-25 10-14 18.39-34
1-6 19.37-32 26-31
20.36x27 17-22 21.28x17
11x31 22.34-30 31-36
23.32-28 6-11 24.50-44
11-17 25.44-39 17-22
26.28x17 12x21 27.33-28
2-7 28.39-33 4-9
29.49-44 7-12 30.44-39
20-24 31.39-34



18-23
 (diagram)

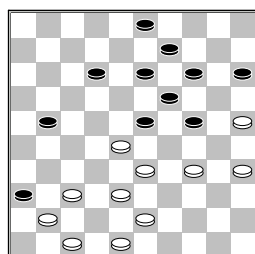
[Zwart had beter kunnen



spelen >31...21-26
 32.42-37 18-22
 33.28x17 12x21
 34.48-42 8-12 35.37-32
 12-18 36.41-37 18-23
 37.33-29 24x33
 38.38x18 13x22
 39.43-38 (geen goed idee voor wit is
 39.34-29 22-28
 40.32x23 19x28
 41.43-38 14-20
 42.25x14 9x20 43.38-32
 26-31 44.37x17 28x48
 45.17-11 48x25 46.11-6
 3-8 47.29-23 20-24
 48.6-1 25-14 49.23-18
 14-9 50.18-12 8x17)
A) 39...21-27
 40.32x21 26x17
 41.34-29 22-28
 42.38-33 28x39
 43.30-24 19x30
 44.25x43 met gelijkwaardige stand
B) 39...22-28
 40.32x23 19x28
 41.38-33 (Niet handig is 41.38-32
 26-31 42.37x17 28x48)
 41...28x39 42.34x43
 9-13 43.30-24 3-9
 44.43-39 14-19
 45.39-33 19x30
 46.35x24 9-14
 47.33-29 14-19
 48.37-32 19x30
 49.25x34 13-19
 50.34-30 21-27
 51.32x21 26x17]
32.34-29
 [Wit had een betere stand kunnen bereiken via
 >32.25-20 14x25
 33.42-37 23x32
 34.38x16 12-17
 35.37-32
A) 35...8-12 36.32-27
 9-14 37.41-37 13-18
 38.27-21 17x26
 39.16-11 3-9 40.11-6
 18-23 41.33-29 24x33
 42.6-1 33-39 43.1x4
 met goede stand voor wit
B) 35...13-18
 36.32-27 8-12
 37.27-21 17x26

38.16-11 18-23
 39.34-29 23x34
 40.30x39 9-13 41.11-6
 12-17 42.41-37 17-22
 43.37-32 26-31
 44.48-42 3-8 45.42-38
 24-30 46.35x24 19x30
 47.32-27 22-28
 48.33x22 31-37
 (48...30-34 49.39x30
 25x34 50.6-1 31-37
 51.1x45 37-41
 52.38-32 15-20
 53.22-17 20-25
 54.17-11 8-12 55.45x1
 41-46 56.11-7 46x19
 57.1-6 met goede stand
) 49.38-32 37x17
 50.6-1 met goede stand
]

32...23x34 33.30x39
 12-18 34.39-34 8-12
 35.42-37 18-23



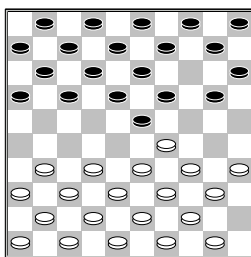
36.37-32

[Wit had het gelijk kunnen houden door
 >36.35-30 24x35
 37.33-29 23x32
 38.38x16 12-17
 39.37-32 19-24
 40.29x20 15x24
 41.32-27 24-29
 42.34x23 35-40
 43.27-21 17x26
 44.16-11 3-8 45.11-6
 40-45 46.43-38 26-31
 47.23-18 13x22 48.6-1
 22-28 49.1-29 45-50
 50.29-20 8-13 51.20-24
 13-18 52.24-8 28-32
 53.38x27 31x22 54.8-35
 50-28 55.35-40 28x46
 56.40x7 46-37 57.7-40
 37-46 58.40-44 22-27
 59.44-49 27-31
 60.49-21 31-37
 61.21-27=]

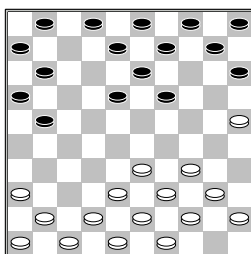
36...24-30
 0-2

□ Verberkt, B. (Benjo)
 ■ Dee, van, H. (Hein)
 Nationale Clubcom12-03-2016

1.34-29 19-23 2.40-34
 14-19 3.45-40
 19-24



[Een spannende variant is 3...10-14 4.50-45
 5-10 5.31-26 20-25
 6.37-31 14-20 7.41-37
 10-14 8.46-41 4-10
 9.32-28 23x32 10.37x28
 19-23 11.28x19 13x24
 12.41-37 8-13 13.37-32
 2-8 14.42-37 14-19
 15.47-41 10-14
 16.32-27 17-21
 17.26x17 12x32
 18.37x28 16-21
 19.41-37 21-26
 20.37-32 26x37
 21.32x41 Deze variant en zijvarianten bevat de nodige studie om te doorgronden. STUDEER voor u Begint.]
 4.32-28 23x32 5.37x28
 17-22 6.28x17 12x21
 7.31-26 7-12 8.26x17
 12x21 9.50-45 20-25
 10.29x20 25x14 11.35-30
 14-19 12.30-25

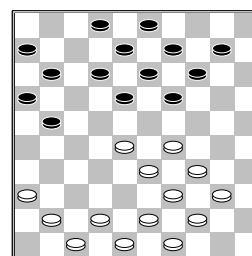


19-23

[De volgende variant bevindt zich in de database 12...10-14
 13.41-37 1-7 14.46-41
 7-12 15.33-28 19-24
 16.39-33 21-26
 17.44-39 18-22
 18.28x17 11x22
 19.37-32 12-17
 20.41-37 17-21
 21.32-28 13-18
 22.28x17 21x12
 23.38-32 9-13 24.43-38
 6-11 25.32-27 24-30
 26.37-32 11-17
 27.42-37 17-21
 28.47-42 30-35
 29.49-44 14-19
 30.33-28 18-23
 31.38-33 12-18

32.37-31 26x37
 33.32x41 21x32
 34.28x37 4-9 35.48-43
 5-10 36.37-32 10-14
 37.42-38 8-12 38.41-37
 16-21 39.34-29 23x34
 40.40x29 19-23
 41.39-34 14-20
 42.25x14 9x20 43.37-31
 23-28 44.33x22 18x27
 45.31x22 12-17
 46.22x11 2-7 47.11x2
 20-24 48.2x30 35x42
 49.43-38 42x33
 50.36-31 21-26
 51.31-27 3-8 52.34-30
 15-20 53.45-40 8-13
 54.30-25 20-24
 55.40-34 13-18
 56.34-29 33-38
 57.32x43 24x33
 58.25-20 18-22
 59.27x18 26-31
 60.18-13 31-37 61.13-8
 37-41 en tot remise
 besloten]

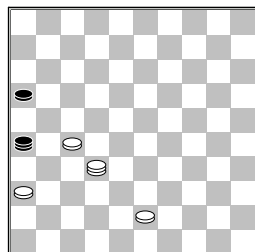
13.41-37 15-20 14.25x14
 10x19 15.46-41 5-10
 16.33-28 23x32 17.37x28
 9-14 18.38-33 4-9
 19.34-29 1-7 20.40-34
 7-12 21.45-40



2-7

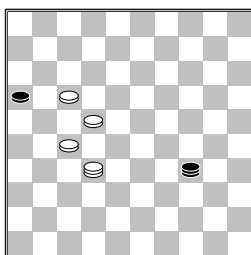
[Zelf zou ik de volgende variant gespeeld hebben 21...19-23
 22.28x19 14x23
 23.42-37 9-14 24.33-28
 23x32 25.37x28 11-17
 26.41-37 13-19
 27.40-35 18-22
 28.39-33 12-18
 29.47-42 19-23
 30.28x19 14x23
 31.35-30 8-13 32.30-25
 2-8 33.44-39 8-12
 34.37-31 10-14
 35.49-44 13-19
 36.43-38 3-8 37.44-40
 8-13 38.40-35 6-11
 39.31-26
 A) 39...22-27
 40.29-24 19x30
 41.35x24 23-29
 42.34x23 18x20
 43.33-28

B) 39...21-27
 40.35-30 23-28
 41.48-43 28-32
 42.29-24 32-37
 43.42x31 14-20
 44.25x23 18x40
 45.30-25 40-45
 46.24-20 13-19
 47.20-15 19-24
 48.25-20
B1) 48...24-30
 49.20-14 45-50
 50.14-9 12-18 51.9-4
B2) 48...45-50
 49.20x29
B2a) 49...50-45
 50.29-24 12-18
 51.39-34 45x20
 52.15x24 18-23
 53.43-39 23-28
 54.24-19 28-32
 55.19-14 32x34
 56.14-9 27-32
 57.31-27 32x21
 58.9-3 22-27
 59.3-12 17x8
 60.26x6=
B2b) 49...22-28
 50.31x22
B2b1) 50...12-18
 51.22x13 50-45
 52.33x22 45x4
 53.38-33 4x49
 54.15-10 16-21
 55.10-4 11-16
 56.4-18 49-35
 57.33-29 35-30
 58.39-33 30-19
 59.18-7 19-37
 60.7-18 37-5
 61.18-1 5-37=
B2b2) 50...28-32
 51.38x27 17x28
 52.33x22 50x24
 53.15-10 24-2
 (53...12-18 54.22x13
 24x8 55.10-5 11-17
 56.5-32 17-21
 57.26x17 8x26



deze stand komt voor
 in de eindspel
 database 58.27-22
 26-21 59.43-38
 21-3 60.32-41
 16-21 61.38-32
 3-25 62.22-18

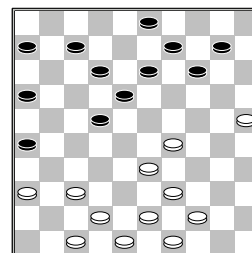
25-43 63.32-28
 21-27 64.41-37
 43-32=) 54.43-39
 11-17 55.22x11
 16x7 56.10-5 7-11
 57.5-46 2-30
 58.39-33 30-24
 59.33-28 12-18
 60.46-32 24-8
 61.32-49 18-23
 62.28x19 8x24
 63.27-22 24-29
 64.49-21 29-1
B2b21) 65.21-49
 1-34 66.49-27
 34-45 67.27-31
 45-1 68.26-21
 11-16 69.21-17
 1-29 70.31-37
 29-33 71.37-28
 33-29 72.28-41
 29-34 73.36-31
 34-25 74.41-23
 25-9 75.31-27 9-3
 76.23-12 3-14
 77.12-3 14-25
 78.3-8 25-34
 79.8-19 34-43
 80.19-32 43-34



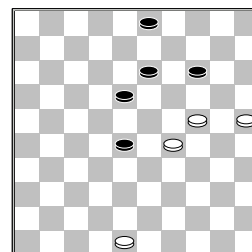
Deze stand komt voor
 in de eindspel
 database 81.32-49
 34-1 82.49-32
 1-29 83.32-37
 29-34 84.37-26
 34-1 85.26-42
 1-23 86.42-26
 23-1 87.26-42
 1-23 88.42-26
 23-1 89.26-42
 1-23=

B2b22) 65.21-17
 11-16 66.17-6 1-7
 67.36-31 7-29
 68.6-1 29-20
 69.31-27 20-9
 70.1-18
B2b221) 70...9-3
 71.22-17 3x49
 72.18-27 49x21
 73.26x17 uit
B2b222) 70...9-25
 71.22-17 (71.18-1
 25-9 72.1-18 9-3
 73.22-17 3x49
 74.18-27 49x21

75.26x17 uit)
 71...25-39
 72.27-22 39-33
 73.18-7 33-47
 74.17-11 47-36
 75.22-17 16-21
 76.7-12 21-27
 77.12-23 en wit
 gaat winnen]
22.29-24 19x30 23.34x25
21-26 24.41-37 18-22
25.28x17 11x22 26.40-34
12-18 27.34-29 8-12

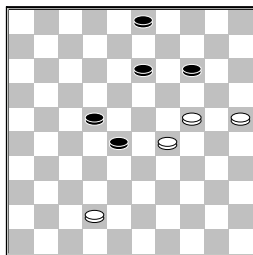


28.44-40
 [wit had het beter de
 volgende variant kunnen
 kiezen >28.37-32 10-15
 29.32-28 12-17
 30.43-38 14-19
 31.29-23 18x29
 32.33x24 19x30
 33.25x34 22x33
 34.38x29 9-14 35.39-33
 17-22 36.49-43 16-21
 37.43-38 7-12 38.38-32
 21-27 39.32x21 26x17
]
28...26-31 29.36x27
22x31 30.37x26 16-21
31.26x19 14x45 32.49-44
45-50 33.33-28 18-22
34.28x17 50-45 35.42-38
45-23 36.17-11 6x17
37.44-40 23x45 38.39-34
45x42 39.47x38 17-22
40.38-33 10-14 41.33-29
7-12 42.43-39 12-18
43.39-34 9-13 44.34-30
22-28 45.30-24

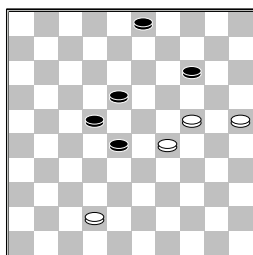


18-22
 [Zwart mist een
 makelijke winst
 45...28-32 46.48-42
 3-8 47.24-20 8-12
 48.20x9 13x4 49.25-20
 18-22 50.20-15 22-27

51.29-24 27-31
 52.24-19 32-37
 53.42-38 37-41
 54.38-32 41-46 uit]
46.48-42



13-18?



[beter voor zwart is
 46...3-9 47.24-20
 13-19 48.20-15 28-32
 49.29-24 19x30
 50.25x34 22-28
 51.34-30 28-33
 52.30-24 32-38
 53.42-37 38-43
 54.24-19 14x23
 55.15-10 43-49 56.10-4
 9-14 57.4-22 23-28
 58.22-17 49-16
 59.17-26 33-39
 60.26-17 28-33]

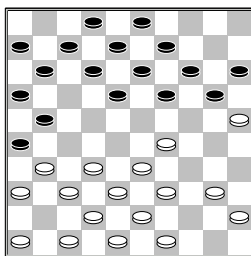
47.42-37?
 [Wit kan remise maken
 via de volgende variant
 >47.25-20 14x25
 48.24-19 25-30
 49.19-14 30-35
 50.14-10 28-33
 51.29x38 35-40 52.10-5
 40-44 53.5-46 3-9
 54.42-37 9-13 55.46-41
]

47...14-19 48.24x13
18x9 49.37-31 9-14
0-2

□ Teijn, F. (Frans)
 ■ Brascamp, H.J. (Herm J
 Nationale Clubcom12-03-2016

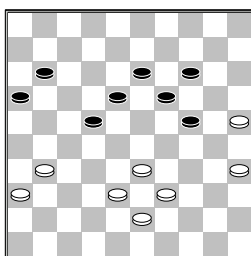
1.32-28 19-23 2.28x19
14x23 3.37-32 10-14
4.34-30 14-19 5.30-25
17-21 6.25x14 9x20
7.41-37 5-10 8.35-30
10-14 9.30-25 21-26

10.40-34 11-17 11.45-40
7-11 12.50-45 4-9
13.34-29 23x34 14.40x29
1-7 15.44-40 17-21



16.29-24

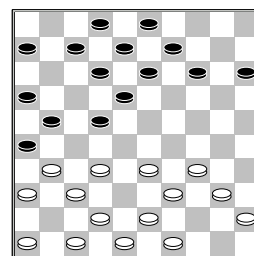
[Tot nu toe is een
 partij gevolgd die in de
 database voorkomt Frans
 wijkt af door 16.40-35
 te spelen 18-23
 17.29x18 12x23
 18.33-29 23x34
 19.39x30 7-12 20.45-40
 12-18 21.40-34 18-23
 22.34-29 23x34
 23.30x39 8-12 24.39-34
 12-18 25.34-30 19-23
 26.47-41 21-27
 27.31x22 18x27
 28.32x21 26x17
 29.37-32 14-19
 30.25x14 9x20 31.43-39
 2-8 32.38-33 20-25
 33.48-43 25x34
 34.39x30 15-20
 35.43-39 20-24
 36.42-38 3-9 37.41-37
 9-14 38.30-25 8-12
 39.46-41 12-18
 40.49-43 17-22
 41.32-28 23x32
 42.37x17 11x22
 43.41-37 6-11 44.37-31



hier is tot remise
 besloten, raar wat volgens
 mij staat zwart hier
 gewonnen 11-17

A) 45.38-32 14-20
46.25x21 16x49
B) 45.31-26
B1) 45...22-27
46.33-28 18-23
47.28-22 17x28
B2) 45...18-23
46.36-31 16-21
47.31-27 (47.38-32

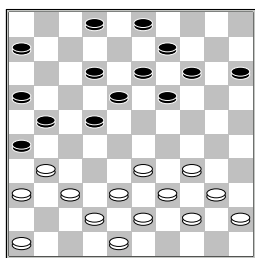
23-28 48.32x23
 19x28) 47...22x31
 48.26x37 17-22]
16...20x29 17.33x24
19x30 18.25x34 11-17
19.38-33 17-22



20.32-28

[Wit had beter
 20.31-27 22x31
 21.36x27 kunnen spelen
A) 21...18-22
22.27x18 13x22
23.49-44 14-19
24.43-38 8-13
25.32-28 12-18
26.28x17 21x12
27.37-31 26x37
28.42x31 met een
gelijkwaardige stand.
B) 21...12-17
22.46-41 17-22
(22...7-11 23.41-36
17-22 24.49-44 22x31
25.36x27 8-12
26.47-41 12-17
27.41-36 2-8 28.40-35
14-20 29.34-30 17-22
30.30-25 22x31
31.25x14 9x20
32.36x27 8-12
33.33-28 13-19
34.43-38 12-17
35.28-22 17x28
36.32x25 21x34
37.35-30 16-21
38.30x39 11-17 met
voordelige maar
gelijkwaardige stand voor
zwart.) 23.41-36
22x31 24.36x27 7-11
25.49-44 8-12
26.47-41 12-17
27.41-36 15-20
28.34-30 20-25
29.30-24 14-19
30.40-35 19x30
31.35x24 9-14
32.24-20 17-22
33.20x9 22x31
34.36x27 3x14
35.33-28 14-19
36.39-33 26-31
37.37x17 11x31
38.42-37 31x42
39.48x37 16-21
40.43-39 met

gelijkwaardige stand.]
20...7-11 21.28x17
11x22 nu komt wit onder
 drukt te staan. **22.42-38**
13-19 23.47-42 8-13
24.49-44

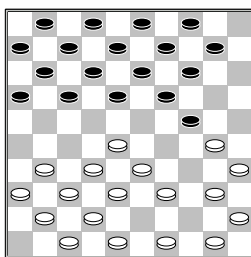


2-8
 [Zwart had beter de
 volgende variant kunnen
 spelen 24...18-23
 25.34-29 23x34
A) 26.40x29 12-18
 27.45-40 14-20
 28.40-35 19-24
 29.39-34 3-8 30.44-40
 2-7 31.33-28 22x33
 32.38-32 33-38
 33.42x33 13-19
 34.43-38 8-12
 35.31-27 9-14
 36.27-22 18x27
 37.34-30 6-11 met
 gewonnen positie voor
 zwart.
B) 26.39x30 19-23
 27.30-25 23-28
 28.44-39 21-27
 29.33-29 14-20
 30.25x14 9x20
 31.40-35 (31.39-33
 28x39 32.43x34 13-19
 33.40-35 12-18
 34.45-40 20-25
 35.38-33 19-23
 36.29-24 3-8 met zeer
 goede stand voor zwart.
) 31...2-7 32.35-30
 20-25 33.29-24 25x34
 34.39x30 12-17
 35.30-25 7-12
 36.38-33 28x39
 37.43x34 27-32
 38.37x28 26x37
 39.42x31 22x33
 40.24-20 15x24
 41.34-29 24-30
 42.29x38 30-34
 43.25-20 3-9 44.31-27
 12-18 45.20-15 9-14
 46.36-31 13-19
 47.31-26 19-24
 48.46-41 met goede
 stand voor zwart]
25.33-28 22x33 26.39x28
18-23 27.37-32 26x37
28.42x31 21-26 29.44-39

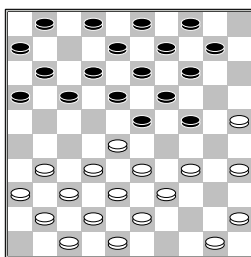
26x37 30.32x41 23x32
31.38x27 12-18 32.41-37
6-11 33.37-32 11-17
34.39-33 17-22 35.43-38
22x31 36.36x27 18-22
37.27x18 13x22 38.48-42
8-12 39.46-41 16-21
40.34-29 21-26 41.41-36
22-27 42.32x21 26x17
43.36-31 3-8 44.40-35
19-24 45.29x20 14x25
46.45-40 8-13 47.40-34
13-19 48.31-27 9-13
49.33-28 13-18 50.38-32
18-23 51.42-37 12-18
1-1

□ Smit, R. (Rik)
 ■ Bidesi, R.P. (Roy)
 Nationale Clubcom 12-03-2016

1.32-28 20-25 2.37-32
14-20 3.41-37 10-14
4.46-41 5-10 5.34-30
25x34 6.39x30 20-25
7.44-39 25x34 8.39x30
15-20 9.43-39 20-24



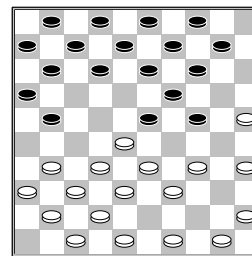
10.40-34
 [In de database komt de
 volgende variant voor
 10.30-25 18-23
 11.49-43 12-18
 12.40-34 7-12



A) 13.34-30 2-7
 14.50-44 17-21
 15.31-26 10-15
 16.26x17 12x21
 17.36-31 21-26
 18.31-27 7-12
 19.41-36 11-17
 20.44-40 6-11
 21.37-31 26x37
 22.42x31 1-6 23.47-42
 14-20 24.25x14 9x20
 25.30-25 4-9 26.25x14

9x20 27.40-34 24-29
 28.33x24 20x40
 29.35x44 15-20 met
 een gelijkwaardige stand
B) 13.34-29 23x34
 14.39x30 18-23
 15.43-39 (15.31-27
 10-15 16.50-44 13-18
 17.44-40 8-13
 18.36-31 2-8 19.41-36
 17-22 20.28x17 11x22
 21.31-26 22x31
 22.36x27 12-17
 23.47-41 8-12
 24.41-36 14-20
 25.25x14 9x20
 26.30-25 4-9 27.25x14
 9x20 28.33-28 20-25
 29.43-39 6-11
 30.39-34 3-8 31.28-22
 17x28 32.34-29 23x34
 33.32x14 34-39
 34.37-31 13-19
 35.14x23 18x29
 36.38-32 8-13
 37.42-38 15-20
 38.40-34 39x30
 39.48-43 12-18
 40.32-28 29-34
 41.38-33 1-6 42.26-21
 34-39 43.33x44 30-34
 44.28-23 18x29
 45.21-17 11x22
 46.27x9 29-33 47.9-3
 later zou de partij
 remise worden.)
 15...16-21 16.50-44
 21-26 17.31-27 10-15
 18.36-31 12-18
 19.41-36 17-22
 20.28x17 11x22
 21.33-28 22x33
 22.38x20 15x24
 23.42-38 8-12
 24.48-43 12-17
 25.38-33 6-11 partij
 zou later door zwart
 worden gewonnen.]

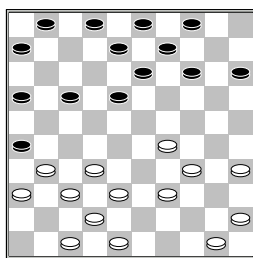
10...18-23 11.30-25
17-21



12.31-27
 [12.49-43 21-26
 13.34-29 23x34
 14.39x30 12-18
 15.31-27 18-23
 16.36-31 7-12 17.33-29

24x22 18.27x29 12-18
 19.30-24 19x30
 20.25x34 11-17
 21.43-39 17-22
 22.45-40 6-11 23.35-30
 11-17 24.40-35 17-21
 25.41-36 14-19
 26.29-24 later zou zwart
 de partij winnen.]

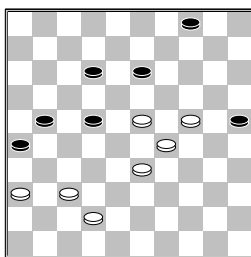
12...12-18 13.36-31
 7-12 14.41-36 21-26
 15.49-43 10-15 16.34-29
 23x34 17.39x30 18-23
 18.33-29 24x22 19.27x29
 12-18 20.30-24 19x30
 21.25x34 11-17 22.43-39



15-20
 [Handiger voor zwart is
 22...1-7 23.32-28 7-12
 24.37-32 26x37
 25.42x31 14-19
 26.39-33 2-7 27.45-40
 18-23 28.29x18 12x23
 29.31-27 15-20
 30.50-45 9-14 31.47-42
 4-9 32.42-37 20-24
 33.34-29 23x34
 34.40x20 14x25 met
 gelijkwaardige stand.]

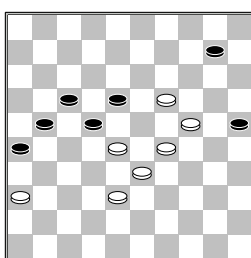
23.45-40 20-24 24.29x20
 14x25 25.38-33 6-11
 26.32-28 1-6 27.37-32
 26x37 28.42x31 17-21
 29.34-29 wit krijgt
 langzaam vat op het
 centrum. 21-27 30.31x22
 18x38 31.33x42 13-18
 32.40-34 18-22 33.28x17
 11x22 34.42-38 9-13
 35.47-42 6-11 36.42-37
 11-17 37.39-33 16-21
 38.29-23 8-12 39.33-29
 12-18 40.23x12 17x8
 41.50-44 8-12 42.44-39
 13-18 43.39-33 12-17
 44.35-30 3-9 45.30-24
 9-13 46.38-32 21-26
 47.32-28 13-19 48.24x13
 18x9 49.28-23 zwart
 moet zich nu goed
 verdedigen 17-21
 50.29-24 2-7 51.34-29
 7-12 52.48-42 9-13

(diagram)



53.42-38
 [53.23-19 22-28
 54.19x17 28x39
 55.17-12 39-44 56.12-8
 44-49 57.24-19 21-27
 58.8-3 49-35 59.29-24
 4-10=]

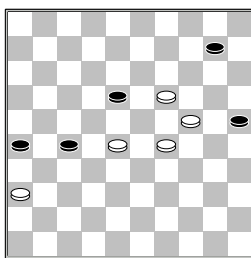
53...13-18 54.23-19
 4-10 55.37-32 12-17
 56.32-28



22-27
 [makkelijker remise
 voor zwart is 56...21-27
 A) 57.38-32 27x38
 58.33x42 22x33
 59.29x38 17-22
 60.38-33 26-31
 61.36x27 22x31=

B) 57.28-23 10-14
 (57...27-32? 58.23x21
 32x43 59.33-28 22x33
 60.29x49 26x17
 61.19-13) 58.23x32
 14x34 59.32-28 22-27
 60.24-19 34-40
 61.19-14 25-30
 62.14-10 40-45
 63.10-5 30-34 64.5-14
 34-40=]

57.38-32 27x38 58.33x42
 17-22 59.28x17 21x12
 60.42-38 12-17 61.38-32
 17-21 62.32-28 21-27

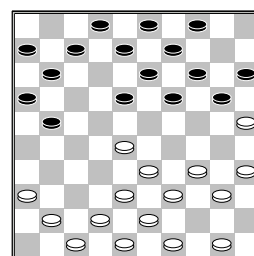


63.28-23
 [63.28-22 27-32
 64.22x13 32-38 65.13-8

38-43 66.8-3 43-49
 67.3-14 10-15 68.19-13
 49-27 69.13-8 26-31=
]
 63...27-32 64.23x12
 32-38 65.12-8 38-43
 66.8-3 43-49
 1-1

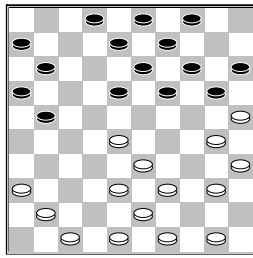
□ Vroom, H.H.J. (Herman)
 ■ Plijter, B. (Berend)
 Nationale Clubcom 12-03-2016

1.32-28 19-23 2.28x19
 14x23 3.37-32 10-14
 4.41-37 14-19 5.34-29
 23x34 6.39x30 5-10
 7.44-39 10-14 8.30-25
 18-23 9.40-34 12-18
 10.46-41 7-12 11.45-40
 17-21 12.31-26 1-7
 13.26x17 12x21 14.32-28
 23x32 15.37x28



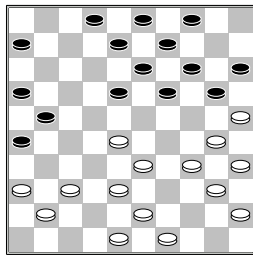
18-23
 [In database komt
 volgende variant voor
 15...7-12 16.50-45
 21-26 17.34-30 12-17
 18.41-37 17-21
 19.37-32 21-27
 20.32x21 26x17
 21.39-34 (21.38-32
 17-21 22.43-38 8-12
 23.49-43 11-17
 24.30-24 20x29
 25.33x24 19x30
 26.25x34) 21...16-21
 22.43-39 8-12 23.49-43
 21-26 24.34-29 17-21
 25.40-34 12-17
 26.45-40 18-23
 27.29x18 13x22
 28.34-29 22-27?
 29.39-34 (wit kan
 schijf winnen via
 29.28-23 19x28
 30.33x31 26x37
 31.42x31) 29...17-22
 30.28x17 11x22
 31.43-39 6-11 32.30-24
 19x30 33.35x24 11-16
 34.42-37 9-13 35.38-32
 27x38 36.33x42]
 16.42-37 23x32 17.37x28
 7-12 18.34-30 12-18

(diagram)



19.39-34

[Een andere optie voor wit is 19.41-37 21-26
 20.40-34 20-24
 21.34-29 11-17
 22.29x20 15x24
 23.39-34 17-21
 24.47-41 18-23
 25.50-45 23x32
 26.38x27 21x32
 27.37x28 6-11 28.41-37
 2-7 29.34-29 4-10
 30.29x20 19-23
 31.28x19 13x15
 32.30-24 met
 gelijkwaardige maar
 mekkelijker stand.]
19...21-26 20.47-42
11-17 21.50-45 17-21
22.42-37



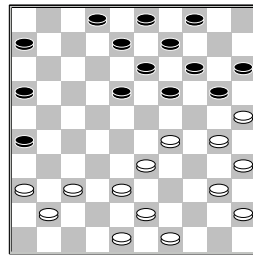
18-22

[In database komt volgende partij voor
 22...6-11 23.34-29
 11-17 24.30-24 19x30
 25.25x34 17-22
 26.28x17 21x12
 27.35-30 20-25
 28.43-39 18-22
 29.37-32 13-18
 30.41-37 9-13 31.49-43
 22-27 32.32x21 16x27
 33.29-23 18x29
 34.34x23 25x34
 35.40x29 4-9 36.45-40
 14-19 37.23x14 9x20
 38.29-23 3-9 39.39-34
 9-14 40.34-30??]
23.28x17 21x12 24.34-29
12-18

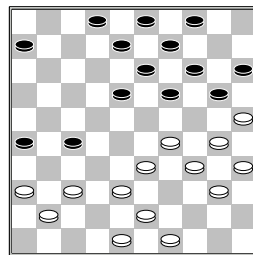
(diagram)

25.40-34

[Een variant zonder problemen voor wit is
 25.30-24 19x30



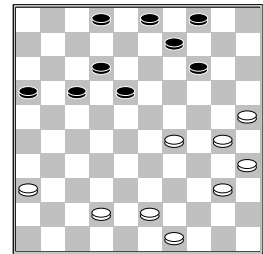
26.25x34 14-19
 27.37-32 16-21
 28.43-39 19-24
 29.41-37 2-7 30.49-43
 18-22 31.34-30 6-11
 32.30x19 13x24
 33.40-34 11-16
 34.32-28 9-13 35.28x17
 21x12 36.37-32 7-11
 37.32-28 12-18
 38.38-32 4-9 39.43-38
 16-21 40.34-30 21-27
 41.30x19 13x24
 42.32x21 26x17
 43.36-31 11-16
 44.31-27 9-13 45.39-34
 8-12 46.38-32 3-8
 47.45-40 17-22
 48.28x17 12x21
 49.34-30 13-19
 50.40-34 20-25
 51.29x20 15x24
 52.33-28 18-23
 53.28-22 24-29
 54.22-17 29x40
 55.17x26 25x34
 56.35x44=]
25...16-21 26.45-40
21-27



27.37-32

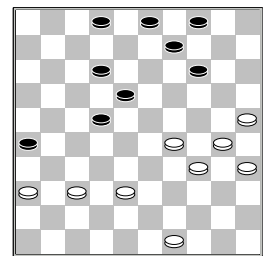
[Beter voor wit is
 27.29-24 20x29
 28.34x12 8x17 29.33-28
 2-7 30.40-34 7-11
 31.37-32 17-22
 32.28x17 11x22
 33.32x21 26x17
 34.34-29 6-11 35.48-42
 13-18 36.38-32 9-13
 37.30-24 19x30
 38.35x24 14-19
 39.43-38 19x30
 40.25x34 17-21
 41.38-33 met
 gelijkwaardige stand.]
27...19-23 28.32x21
26x17 29.41-37 6-11

30.37-32 13-19 31.48-42
20-24 32.29x20 15x24
33.33-29 24x33 34.38x29
8-12 35.43-39 23-28
36.32x23 19x28 37.39-33
28x39 38.34x43 Wit
 staat moeilijker. wit moet
 het nu goed doen om niet te
 verliezen. In de partij
 wordt zijn stand per zet
 slechter. **11-16**



39.40-34

[39.43-38 2-7
 40.40-34 16-21
 41.42-37 14-19
 42.49-43 21-27
 43.29-24 19-23
 44.34-29 23x34
 45.30x39 17-22
 46.39-33 9-14 47.35-30
 12-17 48.37-31 Wit
 moet zorgen dat alle
 schijven zoveel mogelijk
 mee doen. Ook zwart
 belemmeren de aanval te
 kunnen voortzetten. 7-12
 49.43-39 18-23
 50.24-19 23-28
 51.19x10 4x15 52.39-34
 28x39 53.34x43 17-21
 54.31-26 12-17
 55.30-24 3-9 56.24-19
 9-14 57.19x10 15x4
 58.38-33 27-32
 59.25-20 4-10 60.33-29
 32-37 61.43-38 22-28
 62.20-15 10-14
 63.29-24 21-27
 64.24-19 14x23
 65.15-10 28-33
 66.38x18 37-42
 67.10-5=]
39...16-21 40.43-38
21-26 41.42-37 17-22

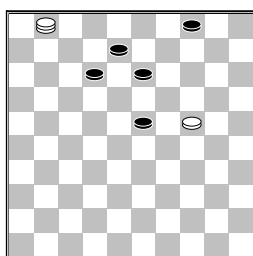


42.49-43

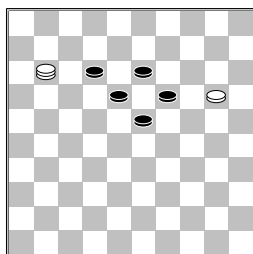
[42.30-24 2-7

43.49-43 22-27
 44.38-33 12-17
 45.43-38 3-8 46.37-32
 27-31 47.36x27 17-22
 48.27-21 26x17
 49.32-28 7-12 50.28-23
 17-21 51.38-32 9-13
 52.23-19 14x23
 53.25-20 21-26
 54.20-14 26-31 55.14-9
 31-36 56.9-3 36-41
 57.3-14

A) 57...12-17
 58.14x28 17-21
 59.28x26 41-46
 60.26x3 46x28 61.3-25
 18-22=
B) 57...41-46 58.14x6
 46x19 59.29-24 19x30
 60.35x24 18-23 61.6-1



B1) 61...12-17
 62.1x34 17-21
 63.34-43 21-26
 64.43-16 26-31
 65.16-38 31-36
 66.38-32 4-10
 67.32x5 8-12
 68.24-20 12-17
 69.5-10 13-18
 70.20-15 17-22
 71.10-46 22-27
 72.15-10 27-32
 73.46x12 36-41=
B2) 61...12-18
 62.1-6 4-10 63.6-11
 10-14 64.11-44 8-12
 65.44-11 14-19
 66.24-20



(66.11-2 19x30
 67.2x28=)
B2a) 66...23-29
 67.20-15 29-34
 68.15-10 34-40
 69.10-4 40-45
 70.11-50 12-17

71.50x11 45-50=
B2b) 66...19-24?
 67.20x29 23x34
 68.11-2 18-23
 69.2x39 23-29
B2b1) 70.39-6
 12-18 71.6-1 18-23
 72.1-12 23-28
 73.12x34 28-32
 74.34-29 32-37
 75.29-47 uit
B2b2) 70.39-25
B2b21) 70...12-17
 71.25-3 17-22
 72.3-9 22-28
 73.9-14 28-33
 74.14-20 uit
B2b22) 70...29-33
 71.25-3 12-18
 72.3-9 18-23
 73.9-14 23-29
 74.14-20 uit
B2b23) 70...12-18
 71.25-9 (71.25-3
 18-22 72.3-9
 22-28 73.9-14
 28-33 74.14-20
 uit) 71...18-23
 72.9-14 23-28
 73.14x32 29-33
 74.32-43]

42...22-27 43.43-39 per
 zet komt wit slechter te
 staan. heb geen betere zet
 voor wit meer kunnen vinden
 in het verloop wat nog
 volgt. **12-17 44.30-24**
17-22 45.39-33 2-8
46.38-32 27x38 47.33x42
22-27 48.24-20 8-13
49.20-15 18-22 50.34-30
13-18 51.29-24 14-20
52.25x14 9x29 53.30-25
 3-9
 0-2