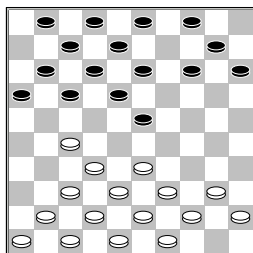


□ Bronstring, E.P. (Ever)
 ■ Bremmer, W. (Wim)
 Nationale Clubcom 27-02-2016

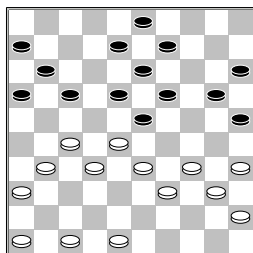
1.33-28 19-23 2.28x19
 14x23 3.39-33 10-14
 4.34-30 14-19 5.30-25
 17-22 6.25x14 9x20
 7.35-30 11-17 8.30-25
 6-11 9.25x14 19x10
 10.31-27 22x31 11.36x27
 10-14 12.44-39 5-10
 13.50-44



13-19

[In de database komt de volgende variant voor
 13...15-20 14.41-36
 13-19 15.46-41 8-13
 16.37-31 2-8 17.41-37
 1-6 18.33-28 17-22
 19.28x17 11x22
 20.31-26 22x31
 21.36x27 4-9 22.39-33
 10-15 23.44-39 20-24
 24.47-41 7-11 25.41-36
 12-17 26.27-21 16x27
 27.32x12 8x17 28.37-31
 18-22 29.31-27 22x31
 30.26x37 3-8 en tot
 remise besloten, toen
 mocht dat nog.]

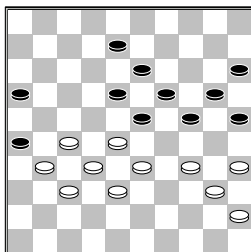
14.33-28 8-13 15.39-33
 2-8 16.41-36 15-20
 17.43-39 10-15 18.37-31
 1-6 19.40-35 4-9
 20.44-40 17-22 21.28x17
 12x21 22.33-28 7-12
 23.40-34 20-25 24.38-33
 21-26 25.49-44 26x37
 26.42x31 14-20 27.44-40
 12-17



28.47-42?

[de volgende zet is
 beter voor wit >28.31-26
 9-14 29.48-42 17-22

30.28x17 11x31
 31.36x27 20-24
 32.46-41 8-12 33.41-37
 6-11 34.33-28 3-8
 35.42-38 14-20
 36.47-41 11-17
 37.41-36 17-21
 38.26x17 12x21
 39.36-31 21-26
 40.39-33

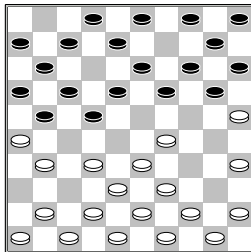


Deze stand komt voor in de database het ging toen verder via 24-30

41.35x24 19x39
 42.33x44 13-19
 43.28-22 8-13 44.22-17
 20-24 45.44-39 24-30
 46.27-21 16x36
 47.17-11 18-22 48.11-7
 22-28 49.39-34 30x39
 50.7-1 36-41 51.1x48
 41-46 52.32x14 46x35
 tot remise besloten]
 28...23-29 29.34x21
 25-30 30.35x24 20x47
 0-2

□ Eenennaam, van, F.A. (F)
 ■ Hofwegen, van, E. (Edwi)
 Nationale Clubcom 27-02-2016

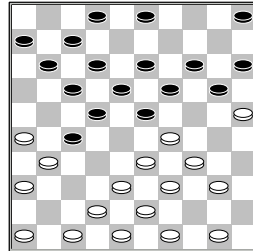
1.34-30 17-21 2.31-26
 12-17 3.30-25 7-12
 4.36-31 1-7 5.31-27
 18-22 6.27x18 13x22
 7.40-34 9-13 8.34-29
 12-18 9.37-31



8-12

[In de database komt de volgende variant voor
 9...4-9 10.31-27 22x31
 11.26x37 7-12 12.29-24
 19x30 13.25x34 14-19
 14.34-30 10-14
 15.30-25 21-27
 16.32x21 16x27

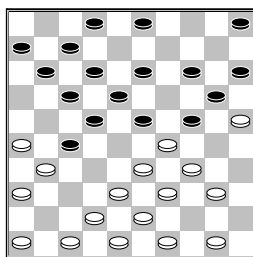
17.45-40 19-23
 18.40-34 14-19
 19.25x14 9x20 20.34-29
 23x34 21.39x30 5-10
 22.33-28 10-14
 23.28-23 19x28
 24.30-24 20x29
 25.38-32 27x38
 26.43x34 13-19
 27.42-38 8-13 28.37-32
 17-22 29.44-39 11-17
 30.41-37 6-11 31.46-41
 11-16 32.49-43 17-21
 33.39-33 22-28
 34.33x22 18x27
 35.43-39 12-18
 36.39-33 2-8 37.34-30
 8-12 38.50-44 3-9
 39.44-40 18-23
 40.30-25 12-18
 41.48-43 15-20
 42.40-34 20-24
 43.34-30 23-29
 44.41-36 21-26
 45.32x21 26x17
 46.37-32 18-22
 47.47-41 13-18
 48.41-37 16-21
 49.36-31 18-23
 50.31-26 9-13 51.37-31
 13-18 52.43-39 29-34
 53.31-27 22x31
 54.26x37 34x43
 55.38x49 23-29
 56.33-28 18-22
 57.49-44 22x33
 58.44-40 21-26
 59.32-27 33-38
 60.40-34 29x40
 61.35x44 24x35
 62.27-21 17-22
 63.21-16 38-43
 64.44-39 43x34
 65.16-11 34-40 66.11-7
 22-27 en wit gaf op]
 10.41-36 21-27 11.32x21
 16x27 12.45-40 4-9
 13.40-34 19-23 14.35-30
 14-19 15.25x14 9x20
 16.30-25 10-14 17.44-40



19-24

(diagram)

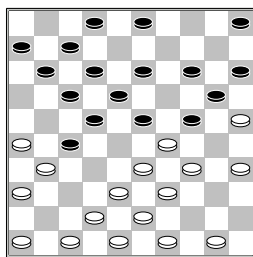
[de database geeft aan



dat het vanuit deze stand op de volgende manier verder gaat:

- 17...11-16
- 18.50-45 7-11 19.46-41
- 3-9 20.41-37 5-10
- 21.37-32 19-24
- 22.32x21 16x27
- 23.42-37 24-30
- 24.40-35 20-24
- 25.29x20 15x24
- 26.47-42 10-15
- 27.34-29 23x34
- 28.49-44 24-29
- 29.35x24 29x20
- 30.39x30 18-23
- 31.33-29 23x34
- 32.30x39 13-19
- 33.37-32 11-16
- 34.32x21 16x27
- 35.42-37 6-11 36.37-32
- 11-16 37.32x21 16x27
- 38.39-33 19-23
- 39.33-29 23x34
- 40.38-33 34-39
- 41.43x34 27-32
- 42.44-39 2-7 43.45-40
- 7-11 44.34-30 9-13
- 45.33-29 12-18
- 46.31-27 32x21
- 47.39-34 11-16
- 48.29-24 20x29
- 49.34x12 17x8 50.26x28
- 13-18 51.30-24 8-12
- 52.40-34 12-17
- 53.34-29 18-22
- 54.48-42 22x33
- 55.29x38 17-22
- 56.38-32 16-21
- 57.36-31 En zwart gaf op]

18.40-35

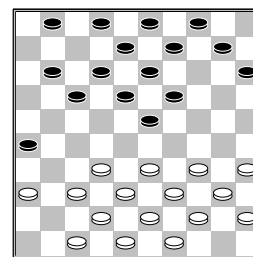


- [Beter voor wit is de volgende variant
- >18.50-44 3-8 19.40-35
- 13-19 20.46-41 8-13
- 21.41-37 24-30

- 22.35x24 19x30
- 23.37-32 11-16
- 24.32x21 16x27
- 25.42-37 7-11 26.37-32
- 11-16 27.32x21 16x27
- 28.48-42 6-11 29.42-37
- 11-16 30.37-32 16-21
- 31.33-28 22x24
- 32.31x11 21-27
- 33.32x21 12-17
- 34.11x22 18x16
- 35.38-33 2-8 36.36-31
- 13-19 37.47-42 23-28
- 38.33x22 24-29
- 39.34x23 19x17
- 40.25x34]
- 18...13-19?
- [Zwart had het gelijk kunnen houden door
- >18...27-32 19.38x27
- 22-28 20.33x22 24x44
- 21.50x39 17x28
- 22.42-38 3-8 23.35-30
- 14-19 24.25x14 19x10
- 25.46-41 28-33
- 26.39x19 13x35
- 27.41-37]
- 19.34-30 23x34 20.33-28
- 22x44 21.31x13 19x8
- 22.30x10 15x4 23.50x30
- 4-10 24.25x14 10x19
- 25.30-25 5-10 26.43-39
- 10-15 27.39-34 12-18
- 28.38-33 8-13 29.34-30
- 7-12 30.33-29 2-8
- 31.30-24 19x30 32.35x24
- 17-21 33.26x17 11x22
- 34.42-38 12-17 35.38-33
- 3-9 36.24-20 15x24
- 37.29x20 9-14 38.20x9
- 13x4 39.33-29 8-13
- 40.46-41 13-19 41.41-37
- 22-28 42.47-42 17-22
- 43.29-24 19x30 44.25x34
- 6-11 45.34-29 11-17
- 46.29-24 18-23 47.49-43
- 22-27 48.42-38 27-32
- 49.38x27 28-33 50.48-42
- 23-29 51.43-38 29x20
- 52.38x29
- 2-0

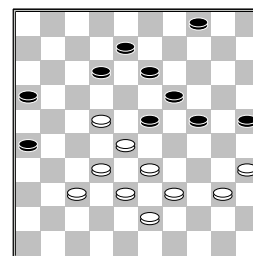
□ Meijer, M. (Maurits)
 ■ Malahé, P.M. (Pertap)
 Nationale Clubcom27-02-2016

- 1.32-28 20-24 2.37-32
- 15-20 3.41-37 10-15
- 4.31-27 5-10 5.46-41
- 20-25 6.36-31 17-21
- 7.41-36 21-26 8.34-29
- 19-23 9.28x30 25x23
- 10.40-34 11-17 11.27-21
- 16x27 12.31x11 6x17
- 13.45-40 7-11 14.50-45
- 14-19
- 15.34-29



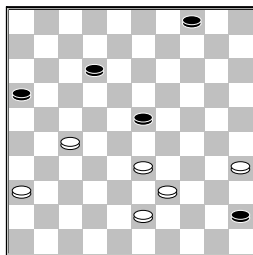
- [15.35-30 1-6
- 16.30-25 10-14
- 17.34-29 23x34
- 18.40x29 19-23
- 19.44-40 23x34
- 20.40x29 14-19
- 21.39-34 17-22
- 22.43-39 19-23
- 23.45-40 13-19
- 24.49-44 11-17
- 25.25-20 15x24
- 26.29x20 8-13 27.36-31
- 17-21 28.33-28 22x33
- 29.38x29 12-17
- 30.31-27 19-24
- 31.27x16 24x15
- 32.40-35 15-20
- 33.35-30 2-8 later zou deze partij in remise eindigen.]

- 15...23x34 16.40x29
- 17-22 17.44-40 10-14
- 18.35-30 11-16 19.40-35
- 12-17 20.32-28 17-21
- 21.28x17 21x12 22.38-32
- 14-20 23.43-38 19-24
- 24.30x19 13x24 25.32-28
- 9-13 26.37-31 26x37
- 27.42x31 1-7 28.31-27
- 3-9 29.38-32 13-19
- 30.48-43 7-11 31.43-38
- 11-17 32.47-42 20-25
- 33.29x20 15x24 34.49-43
- 9-13 35.36-31 17-21
- 36.31-26 18-23 37.26x17
- 12x21 38.45-40 2-7
- 39.27-22 21-26 40.42-37
- 7-12



- 41.37-31
- [Beter voor wit is
- >41.40-34 12-18
- 42.22-17 16-21
- 43.17-12 18x7 44.37-31
- 26x37 45.32x41 23x32
- 46.38x16 24-30
- 47.35x24 19x30
- 48.33-28 30-35

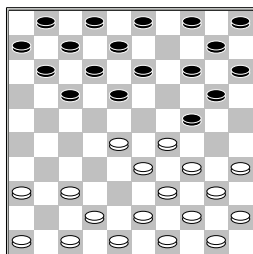
49.41-36 8-12]
41...26x37 42.32x41
23x32 43.38x27 13-18
44.22x2 19-23 45.2x30
25x45 46.41-36



12-17
 [Directe winst is
 46...16-21 47.27x16
 45-50 48.35-30
 (48.39-34? 50x22
 49.35-30 12-17)
 48...23-28 49.33x22
 50x6]
47.33-29 23x34 en nu is
 deze stand niet meer te
 winnen hoe vreemd het ook
 klinkt. **48.39x30 4-9**
49.30-25 17-21 50.25-20
21x32 51.35-30 45-50
52.30-25 9-13 53.20-15
50-28 54.43-39 28x44
55.15-10 44-33 56.10-4
13-19 57.4-15 33-22
58.36-31 22x36 59.15-10
1-1

□ Vroom, H.H.J. (Herman)
 ■ Tangelder, J.W.H. (Han)
 Nationale Clubcom 27-02-2016

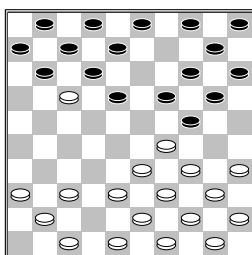
1.32-28 18-23 2.33-29
23x32 3.37x28 19-24
4.38-33 16-21 5.41-37
21-26 6.37-32 26x37
7.32x41 13-18 8.41-37
9-13



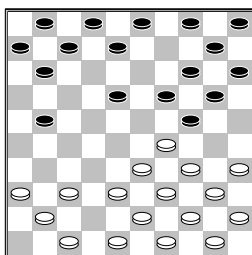
9.42-38
 [9.46-41 4-9
 10.43-38 17-22
 11.28x17 11x22
 12.38-32 14-19
 13.33-28 24x33
 14.28x17 12x21
 15.39x28 10-14
 16.36-31 21-26
 17.49-43 6-11 18.43-38

7-12 19.41-36 1-6
 20.44-39 5-10 21.39-33
 2-7 22.50-44 11-16
 23.31-27 18-23
 24.34-30 23-29
 25.33x24 20x29
 26.30-25 19-23
 27.28x19 14x23
 28.35-30 10-14
 29.40-35 12-18
 30.38-33 29x38
 31.32x43 later zou deze
 partij in remise eindigen.
]

9...13-19 10.46-41
17-22 11.28x17



12x21



[Beter voor zwart is
 >11...11x22 12.38-32
 19-23 13.33-28 24x33
 14.28x19 14x23
 15.39x19 4-9 16.32-28
 22x33 17.37-31 18-22
 18.41-37 22-28
 19.48-42 12-17
 20.44-39 33x44
 21.50x39 9-13
 (21...9-14 22.31-27
 14x23 23.27-22 10-14
 24.22x33 14-19 met
 mooiere stand voor wit.
) 22.34-30 13x24
 23.30x19 3-9 24.43-38
 9-13 25.38-33 13x24
 26.33x11 6x17]

12.38-32
 [>12.34-30 21-26
 13.40-34 4-9 14.30-25
 7-12 15.37-32 8-13
 16.34-30 11-17
 17.41-37 6-11 18.29-23
 19x28 (18...18x29?
 19.37-31 26x28
 20.33x22 17x28
 21.38-33 29x38

22.43x23 19x28
 23.30x6) 19.30x8 2x13
 20.33x22 17x28
 21.32x23 18x29
 22.45-40 13-18
 23.39-34 20-24
 24.34x23 18x29 met
 makkelijkere stand voor
 wit.]

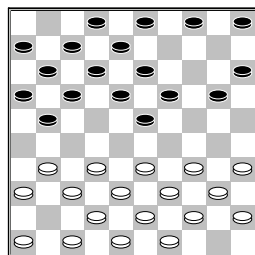
12...21-26 13.34-30
7-12 14.40-34 4-9
15.30-25 9-13 16.34-30
11-17 17.45-40 17-21
18.40-34 18-22 19.32-28
12-18 20.28x17 21x12
21.37-32 6-11 22.41-37
11-17 23.43-38 17-22
24.32-28 2-7 25.28x17
12x21 26.38-32 18-22
27.47-42 7-12 28.32-28
12-18 29.28x17 21x12
30.49-43 18-22 31.43-38
1-6 32.50-45 6-11
33.45-40 12-17 34.37-32
22-28 35.32x23 19x28
36.30x19 13x24 37.33x22
17x28 38.35-30 24x33
39.38x29 28-32 40.42-37
32x41 41.36x47 8-13
42.48-42 11-17 43.42-37
17-22 44.29-23

[44.30-24 22-27
 45.39-33 3-8 46.37-32
 27x38 47.33x42 13-18
 48.42-37 18-23
 49.29x18 20x29
 50.34x23 14-20
 51.25x14 10x28
 52.44-39 15-20
 53.40-35 20-24
 54.47-42 5-10 55.42-38
 10-14 56.38-33 26-31
 57.37x26 28-32 met
 gelijkwaardige stand.]

44...22-27 45.34-29
27-31 46.37-32 13-19
47.32-28 31-37 48.30-24
19x30 49.25x34 26-31
50.28-22 20-25 51.22-17
25-30 52.34x25 14-20
53.25x14 10x28 54.17-12
31-36 55.12-7 37-41
56.7-2 41-46 57.29-23
28x19 58.2x30 46-23
59.30-34 23-1 60.39-33
1-6 61.44-39 6-1
62.33-28 1-6 63.39-33
6-17 64.34-48 15-20
65.40-35 17-6 66.48-34
6-11 67.34-45 11-2
68.28-23 2-24 69.45-29
3-8 70.23-18 8-12
71.18x7 24-2 72.29x15
2x50
1-1

□ Kwartel, van der, A.J.J
 ■ Dee, van, H. (Hein)
 Nationale Clubcom 27-02-2016

1.32-28 17-21 2.37-32
 19-23 3.28x19 14x23
 4.41-37 10-14 5.34-30
 14-19 6.30-25 11-17
 7.25x14 9x20 8.40-34
 7-11 9.45-40 1-7
 10.50-45

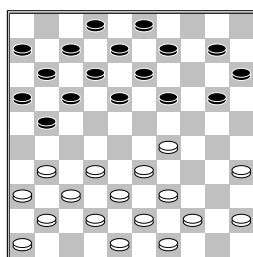


4-9
 [In database komen de volgende varianten voor 10...5-10

A) 11.34-30 10-14
 12.30-25 4-9 13.40-34
 21-27 14.31x22 17x28
 15.33x22 18x27
 16.32x21 16x27
 17.44-40 11-17
 18.46-41 6-11
 19.34-29 23x34
 20.40x29 20-24
 21.29x20 15x24
 22.39-33 12-18
 23.33-28 7-12
 24.37-31 18-23
 25.31x22 23x32
 26.38x27 17x28
 27.41-37 19-23
 28.42-38 13-19
 29.38-32 8-13 met goede stand voor zwart die deze partij later won.

B) 11.47-41 10-14
 12.35-30 4-9 13.30-25
 21-26 14.32-28 23x32
 15.37x28 26x37
 16.41x32 16-21
 17.46-41 11-16
 18.41-37 7-11
 19.34-29 21-26
 20.40-34 17-21
 21.45-40 21-27
 22.32x21 26x17
 23.38-32 20-24
 24.29x20 15x24
 25.43-38 (25.34-29?)
 14-20 26.25x23 17-22
 27.28x17 11x22
 28.29x20 18x47
 29.20-15 9-14)
 25...18-23 26.49-43
 12-18 27.40-35 17-21

28.34-29 23x34
 29.39x30 18-23
 30.37-31 13-18
 31.44-39 8-13
 32.28-22 18x27
 33.31x22 11-17
 34.22x11 6x17 en zwart won deze partij later.
 C) 11.31-27 10-14
 12.33-28 21-26
 13.34-30 20-24
 14.38-33 4-9 15.43-38
 17-22 16.28x17 11x31
 17.36x27 24-29
 18.33x24 23-28
 19.32x23 18x20
 20.49-43 12-18
 21.46-41 7-12
 22.41-36 2-7 23.39-33
 7-11 24.44-39 12-17
 25.37-31 26x37
 26.42x31 18-22
 27.27x18 13x22
 28.38-32 8-13
 29.47-42 17-21
 30.31-27 22x31
 31.36x27 3-8 32.33-28
 8-12 33.43-38 12-18
 34.39-33 21-26
 35.30-24 20x29
 36.33x24 19x30
 37.35x24 14-20
 38.28-23 20x29
 39.23x12 26-31
 40.27x36 29-33
 41.38x29 11-17
 42.12x21 16x47
 43.29-23 en zwart won de partij.]
 11.47-41 5-10 12.34-29
 23x34 13.40x29



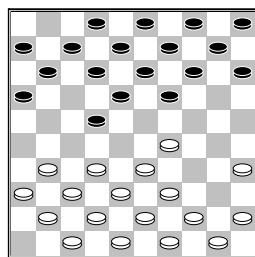
19-24
 [In de database komt de volgende partij voor
 13...21-26 14.44-40
 19-24 15.39-34 10-14
 16.34-30 14-19
 17.30-25 9-14 18.32-28
 17-22 19.28x17 11x22
 20.31-27 22x31
 21.36x27 3-9 22.41-36
 12-17 23.37-31 26x37
 24.42x31 7-11 25.43-39
 18-22 26.27x18 13x22
 27.31-27 22x31

28.36x27 8-13 29.40-34
 17-21 30.27-22 19-23
 31.29x18 24-30
 32.35x24 20x40
 33.45x34 11-17
 34.22x11 16x7 35.34-29
 13x22 36.29-24 7-12
 37.39-34 12-18
 38.38-32 9-13 39.34-29
 13-19 40.24x13 18x9
 41.46-41 6-11 42.41-37
 11-17 43.49-43 2-8
 44.43-38 8-12 45.29-24
 9-13 46.33-29 14-19
 47.38-33 19x30
 48.25x34 21-27
 49.32x21 17x26
 50.34-30 12-18
 51.30-25 22-28
 52.33x22 18x27
 53.29-24 13-18
 54.25-20 18-23
 55.20-14 23-28
 56.24-20 15x24
 57.14-10 28-33 58.10-4
 33-39 59.4x36 39-44
 met remise.]
 14.32-28 21-26 15.37-32
 26x37 16.42x31 17-22
 17.28x17 12x21 18.32-28
 7-12 19.31-26 2-7
 20.26x17 11x22 21.28x17
 12x21 22.36-31 7-12
 23.31-26 21-27 24.41-37
 16-21 25.26x17 12x21
 26.46-41 6-11 27.38-32
 27x38 28.33x42 24x33
 29.39x28 9-14 30.42-38
 8-12 31.44-39 3-8
 32.45-40 11-16 33.40-34
 21-26 34.39-33 20-25
 35.43-39 14-20 36.49-43
 10-14 37.37-32 16-21
 38.41-37 14-19 39.37-31
 26x37 40.32x41 21-26
 41.41-36 12-17 42.48-42
 17-21 43.42-37 18-22
 44.28x17 21x12 45.36-31
 19-24 46.34-29 12-18
 47.31-27 8-12 48.38-32
 18-23 49.29x7 24-30
 50.35x24 20x49 51.7-1
 1-1

□ Teijn, F. (Frans)
 ■ Kreder, H. (Hans)
 Nationale Clubcom 27-02-2016
 1.32-28 17-22 2.28x17
 11x22 3.37-32 7-11
 4.41-37 1-7 5.34-30
 20-25 6.46-41 25x34
 7.40x29

(diagram)

12-17



[In de database komt de volgende variant voor

- 7...14-20 8.45-40
- 10-14 9.50-45 5-10
- 10.32-28 19-23
- 11.28x19 14x34
- 12.40x29 10-14
- 13.35-30 14-19
- 14.30-25

A) 14...19-23

- 15.25x14 23x34
- 16.39x30 9x20
- 17.44-39 18-23
- 18.37-32 12-18
- 19.32-28 23x32
- 20.38x27 7-12
- 21.42-38 11-17
- 22.45-40 17-21
- 23.40-35 21x32
- 24.38x27 6-11
- 25.47-42 11-17
- 26.42-38 17-21
- 27.30-25 21x32
- 28.25x14 4-9 29.38x27
- 9x20 30.48-42 12-17
- 31.39-34 8-12
- 32.42-38 2-7 33.38-32
- 13-19 34.32-28 19-24
- 35.31-26 22x31
- 36.26x37 3-9 37.34-29
- 9-14 38.43-39 16-21
- 39.37-32 21-26
- 40.41-37 17-21
- 41.36-31

A1) 41...7-11?

- 42.31-27 11-16
- 43.49-44 12-17
- 44.28-22 17x28
- 45.33x13 24x33
- 46.39x28 14-19
- 47.13x24 20x29 uit

A2) 41...14-19

- 42.31-27 18-23
- 43.29x18 12x23
- 44.27x16 23-29
- 45.32-27 (45.16-11
- 29x27 46.11x2 27-32
- 47.37-31 26x37
- 48.28-23 19x28
- 49.2x30 37-41
- 50.39-33 28x39
- 51.30x16=) 45...29x38
- 46.39-33 38x29
- 47.27-22 29-34
- 48.22-17 34-39
- 49.17-11 20-25
- 50.11x2 39-44

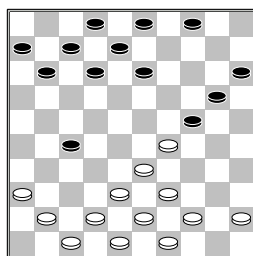
- 51.49x40 19-23
- 52.28x30 25x45=

B) 14...19-24

- 15.25x14 9x20
- 16.37-32
- B1)** 16...11-17
- 17.41-37 7-11
- 18.32-28 4-9
- 19.38-32 22-27
- 20.31x22 18x38
- 21.43x32 16-21
- 22.42-38 21-27
- 23.32x21 17x26 met
- remise als resultaat
- later.

B2) 16...22-27

- 17.31x22 18x27
- 18.32x21 16x27



19.41-37

B2a) 19...12-18

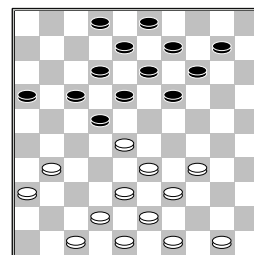
- 20.38-32 27x38
- 21.43x32 4-9
- 22.32-28 7-12
- 23.42-38 met remise
- later.

B2b) 19...13-18

- 20.38-32 27x38
- 21.43x32 4-9
- 22.42-38 9-13
- (22...11-16 23.49-43
- 7-11 24.32-28 18-22
- 25.28x17 11x22
- 26.29-23 12-18
- 27.23x12 8x17
- 28.47-42 2-8
- 29.38-32 6-11
- 30.32-27 22x31
- 31.36x27 9-13
- 32.33-28 17-21
- 33.37-32 met remise
- later.) 23.47-42
- 11-17 24.32-28 7-11
- 25.38-32 17-21
- 26.42-38 11-16
- 27.45-40 6-11
- 28.39-34 11-17
- 29.44-39 18-22
- 30.40-35 met remise
- later]

- 8.35-30 19-24 9.30x19**
- 14x34 10.39x30 7-12**
- 11.44-39 15-20 12.30-25**
- 17-21 13.25x14 10x19**
- 14.31-27 22x31 15.37x17**
- 11x22 16.41-37 5-10**
- 17.45-40 10-14 18.40-34**

- 6-11 19.32-28 11-17**
- 20.37-31 4-10**



21.34-29

[Betere variant voor wit is 21.38-32

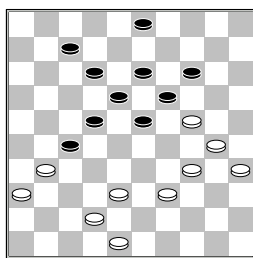
A) 21...18-23

- 22.31-27 22x31
- 23.36x27 10-15
- 24.42-38 14-20
- 25.49-44 20-24
- 26.50-45 12-18
- 27.45-40 17-21
- 28.40-35 15-20
- 29.34-30 20-25
- 30.47-42 25x34
- 31.39x30 2-7 32.44-40
- met gelijkwaardige stand.

B) 21...19-23

- 22.28x19 14x23
- 23.34-29 23x34
- 24.39x30 17-21
- 25.42-38 21-27
- 26.32x21 16x27
- 27.47-42 2-7 28.42-37
- 7-11 29.33-29
- (29.50-44 18-23
- 30.44-39 10-15
- 31.39-34 9-14
- 32.33-29 12-18
- 33.37-32 11-16
- 34.32x21 16x27
- 35.38-32 27x38
- 36.43x32 22-28
- 37.32-27 14-20
- 38.31-26 20-24
- 39.29x20 15x35
- 40.27-21 18-22
- 41.21-16 28-33
- 42.34-30 35x24
- 43.16-11 24-29
- 44.11-6 22-28 45.6-1
- 13-18 46.26-21 met
- gelijkwaardige stand.)
- 29...13-19 30.38-33
- 9-13 31.50-44 10-14
- 32.44-39 19-23
- 33.39-34 3-9 34.37-32
- 27x38 35.43x32 23-28
- 36.32x23 13-19
- 37.48-42 19x39
- 38.34x43 met
- gelijkwaardige stand.]
- 21...19-23 22.28x19**
- 14x34 23.39x30 17-21**
- 24.33-29 13-19 25.43-39**
- 9-13 26.39-34 10-14**

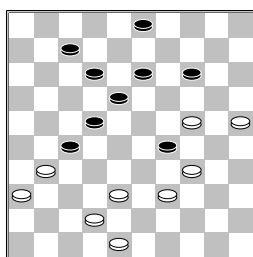
27.50-44 21-26 28.44-39
 26x37 29.42x31 16-21
 30.49-44 21-27 31.44-40
 19-23 32.40-35 13-19
 33.47-42 8-13 34.29-24
 2-7



35.30-25?

[Beter voor wit is de volgende variant
 >35.48-43 7-11
 36.42-37 11-17
 37.30-25 19x30
 38.35x24 23-28
 39.38-33 17-21
 40.43-38 21-26
 41.33-29 13-19
 42.24x13 18x9 43.29-24
 9-13 44.24-20 13-18
 45.20x9 3x14 46.34-30
 12-17 47.37-32 28x37
 48.31x42 27-31
 49.36x27 22x31
 50.30-24 31-37
 51.42x31 26x37
 52.24-20 14-19
 53.20-15 37-41
 54.15-10 met remise.]

**35...19x30 36.35x24
 23-29**



37.34x23

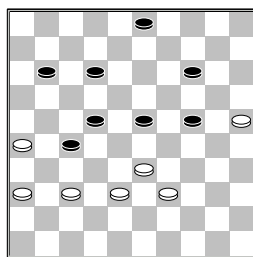
[Op 37.24x33 volgt
 27-32 38.38x27 14-20
 39.25x14 13-19
 40.14x23 18x47
 41.27x18 12x23 uit.
]

**37...18x20 38.42-37
 7-11 39.31-26 13-18
 40.39-33 18-23 41.48-43
 20-24 42.43-39**

(diagram)

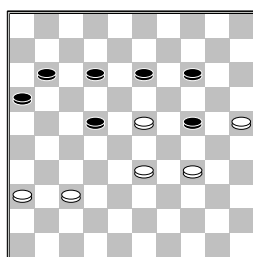
23-28

[Zekere winst is
 >42...3-9 43.39-34



(43.26-21 27x16
 44.36-31 16-21
 45.31-26 21-27)
 43...12-18 uit (natuurlijk niet
 43...9-13 44.26-21
 27x16 45.33-29 24x31
 46.36x20 met remise.)

**43.26-21 27x16 44.38-32
 3-9 45.32x23 9-13
 46.39-34**



11-17

[De volgende winst gaf Wim Bremmer na de partij aan. >46...14-20
 47.25x14 12-18
 48.23x12 13-19
 49.14x23 22-28
 50.33x22 11-17
 51.22x11 16x40
 52.36-31 40-44
 53.31-27 44-50]

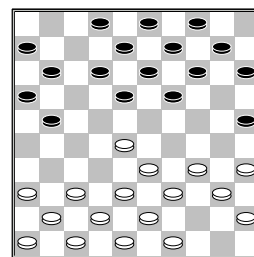
**47.37-31 16-21 48.34-29
 14-20 49.25x14
 1-1**

□ Dekker, H. (Harry)
 ■ Bidesi, R.P. (Roy)
 Nationale Clubcomp27-02-2016

**1.34-29 20-25 2.40-34
 14-20 3.45-40 10-14
 4.31-26 5-10 5.50-45
 17-21 6.26x17 12x21
 7.29-24 20x29 8.34x12
 7x18 9.40-34 1-7
 10.32-28 7-12 11.44-40**

(diagram)

11-17 deze stand komt niet voor in de database.
 [11...21-26 12.37-32
 11-17 13.36-31 26x37
 14.42x31 2-7 15.41-37
 7-11 16.46-41 17-21



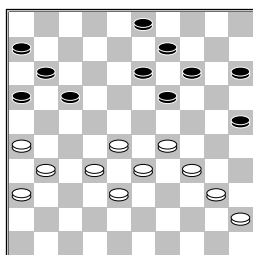
17.41-36 21-26
 18.28-23 19x28
 19.32x23 18x29
 20.34x23 14-20
 21.39-34 13-18
 22.35-30 18x29
 23.33x24 20x29
 24.34x23 25x34
 25.40x29 9-13 26.45-40

4-9 27.38-32 10-14
 28.40-34 14-20
 29.43-39 20-24
 30.29x20 15x24
 31.23-19 24-29
 32.34x23 13x24
 33.49-44 9-14 34.31-27
 8-13 35.44-40 24-30
 36.36-31 30-35
 37.32-28 35x22
 38.27x20 12-18
 39.23x12 11-17
 40.12x21 16x36
 41.20-14 6-11 42.14-10

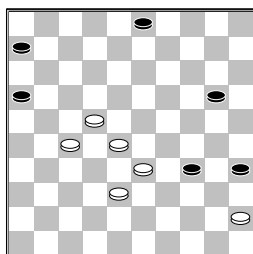
3-9 43.10-5 uit]
 [11...15-20 12.37-32
 10-15 13.41-37 20-24
 14.36-31 14-20
 15.46-41 9-14 16.31-27
 4-9 17.34-29 2-7
 18.40-34 24-30
 19.35x24 19x30
 20.45-40 30-35
 21.49-44 20-24
 22.29x20 15x24
 23.28-23 18x29
 24.34x23 25-30
 25.27-22 21-26
 26.32-28 (26.23-18

12x23 27.22-17 11x22
 28.33-28 22x33
 29.39x10 9-14 30.10x19
 24-29 31.43-39 13x24
 32.32-28 16-21 met
 betere stand voor zwart.
) 26...14-19 27.23x14
 9x20 28.28-23 16-21
 29.41-36 11-16
 30.40-34 35-40
 31.34x14 40x49
 32.14-10 3-9 33.22-17
 49-35 34.10-4 13-19
 35.4x11 19x28 36.17x8
 16x7 37.33x22 7-12
 38.8x17 21x12 39.39-34
 35-49 40.22-17 12x21
 41.38-32 49x27
 42.37-31 26x37

43.42x22 uit.]
 12.36-31 21-26 13.37-32
 26x37 14.42x31 17-21
 15.41-37 2-7 16.46-41
 21-26 17.41-36 18-22
 18.28x17 12x21 19.33-28
 7-11 20.39-33 8-12
 21.43-39 12-18 22.49-43
 18-22 23.28x17 21x12
 24.32-28 15-20 25.47-42
 10-15 26.37-32 26x37
 27.42x31 20-24 28.31-26
 24-30 29.35x24 19x30
 30.33-29 12-17 31.39-33
 30x39 32.43x34 14-19
 33.48-42 9-14 34.42-37
 4-9 35.37-31

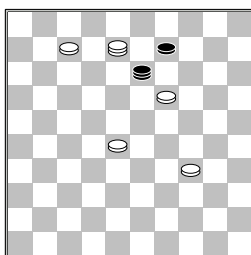


16-21 risico volle zet.
 [zelf zou ik het liever
 zo spelen en zelf niet in
 gevaar komen. 35...19-24
 36.29x20 15x24
 37.34-29 24-30
 38.40-35 14-19
 39.35x24 19x30
 40.31-27 17-21
 41.26x17 11x31
 42.36x27 30-35
 43.29-23 25-30
 44.27-22 13-19
 45.23x14 9x20 46.32-27
A) 46...6-11 47.27-21
 16x18 48.28-23 18x29
 49.33x15 30-34
 50.15-10 35-40
 51.10-5 40-44 met
 voordeel remise.
B) 46...30-34



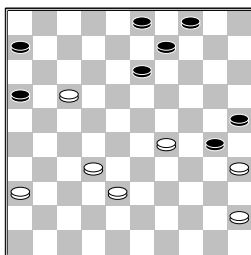
B1) 47.38-32 6-11
 48.33-29 34x23
 49.28x19 20-24
 50.19x30 35x24
 51.32-28 24-29
 52.28-23 29x18
 53.22x13 11-17

54.45-40 17-21
 55.27-22 21-26
 56.22-18 26-31
 57.18-12 31-37
 58.13-8 37-42=
B2) 47.27-21 16x18
 48.28-23 18x29
 49.33x15 34-39
 50.38-33 (50.15-10
 39-44 51.38-33 44-50
 52.33-29 50-22
 53.10-5 22-39
 54.5-32 39-11
 55.29-24=) 50...39x28
 51.15-10 28-33
 52.10-5 33-38
 53.5-28 38-42
 54.45-40 35x44
 55.28x50
C) 46...3-9 47.22-17
 30-34 48.38-32 20-24
 49.17-12 35-40
 50.12-8 40-44 51.8-2
 24-29 52.33x24 44-49
 53.24-19 16-21
 54.27x16 49x27 55.2-8
 6-11 56.16x7 34-40
 57.45x34 27-13



Deze stand verdient wel
 een diagram. Leuke manier
 om remise te maken. Mijn
 oud clubgenoot Rien
 Visser maakte op
 gelijksoortige manier
 remise tegen Paul
 Germain. Klein verschil
 Rien had maar 1 dam toen
 hij achter/tussen de
 schijven liep.]

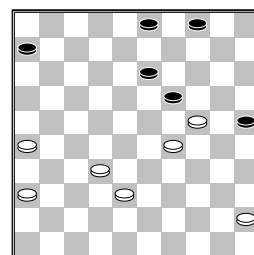
36.31-27 11-16 37.27-22
 19-23 38.28x10 17x30
 39.26x17 15x4 40.40-35



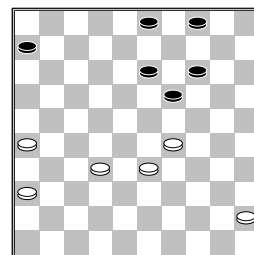
16-21
 [Geen optie is
 40...3-8 41.35x24
 13-18 42.24-19 4-10

43.32-27 9-13 44.29-24
 25-30 45.24x35 13x24
 46.45-40 10-14
 47.40-34 14-19
 48.36-31 19-23
 49.38-33 8-13 50.31-26
 13-19 51.27-22
 (51.26-21 23-28
 52.33x13 19x8 53.34-30
 24-29 54.30-25 29-33
 55.25-20 33-39
 56.20-14 39-43 57.14-9
 43-48 58.9-4 48-26
 59.17-12 8x17 60.21x12
 26x3=) 51...18x27
 52.17-12 27-32 53.12-8
 32-37 54.8-2 23-28
 55.33x22 19-23 56.2x30
 37-41 57.22-17 41-46
 58.30-24 16-21
 59.17-12 21-27 60.12-8
 27-32 61.24-47 6-11
 62.8-2 11-17 met winst
 voor wit]

41.17x26 9-14 42.35x24
 14-19

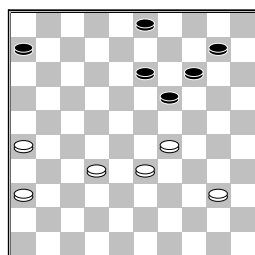


43.24-20
 [Beter voor wit is
 43.45-40 19x30
 44.40-35 6-11 45.35x24
 13-19 46.24x13 25-30
 47.26-21 30-35
 48.29-23 35-40
 49.23-18 40-44
 50.18-12 44-50 51.13-8
 50-45 52.8-2 45x1
 53.2x16 1-12 54.32-28
 12x26 55.28-22 met
 voordeliger maar remise
 eindspel voor wit]
 43...25x14 44.38-33

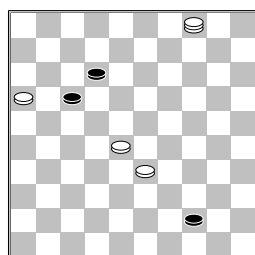


4-10
 [Gelijkwaardiger spel
 voor zwart is 44...13-18
 45.45-40 6-11 46.36-31
 4-10 47.40-34 11-17

48.31-27 3-8 49.33-28
 10-15 Probleemloos
 remise voor zwart]
45.45-40



10-15
 [45...6-11 om in de
 analysevariant te komen
 bij vorige zet.]
 46.32-28 13-18 47.26-21
 14-20 48.40-34 20-24
 49.29x20 15x24 50.36-31
 18-23 51.31-27 23x32
 52.27x38 6-11 53.33-28
 3-8 54.38-33 8-12
 55.21-16 11-17 56.34-29
 24-30 57.29-24 30-35
 58.24x13 35-40 59.13-9
 40-44 60.9-4

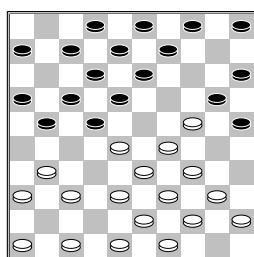


17-21
 [60...44-49 61.4-27
 49x21 62.16x27 12-18
 63.33-29=]
61.16x27 12-18 62.4x22
44-49
 1-1

□ Yigitturk, B. (Berke)
 ■ Kolfoort, J.T. (Hans)
 Nationale Clubcomp27-02-2016

Een leuk verhaal kwam ter sprake voor deze wedstrijd. Ik heb zelf in de jaren 90 een partij gespeeld tegen Hans en toen kwam de Haas tegen Fabre op het bord. Ik had net voor het spelen van de partij tegen Hans de tijd gehad om klassieke middenspel posities te bestuderen. Ik maakte tegen Hans en fout en ik wist ook welke en ik zei dit tegen hem na de partij. Dit verhaal vertelde hij mij dus voor de wedstrijd en ik

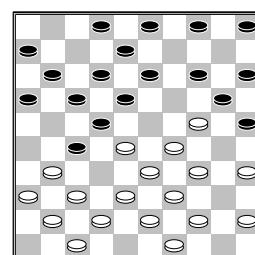
kon mij de partij herinneren en het verhaal ook. Frans van Eennennaam heeft een keer de Haas tegen Fabre op het bord gehad en hierdoor kwam ik er achter dat ik die stand op het bord had gehad. leuk verhaal voor een wedstrijd. Dat was de reden dat Hans op bord 8 wilde om mij te ontmoeten. Hij kreeg mij niet maar onze benjamin Berke. **1.33-29 17-22**
2.39-33 11-17 3.32-28
6-11 4.44-39 20-25
5.37-32 1-6 6.50-44
19-23 7.28x19 14x23
8.42-37 10-14 9.32-28
23x32 10.37x28 16-21
11.41-37 14-20 12.35-30
11-16 13.30-24



21-27
 [de database geeft de volgende variant

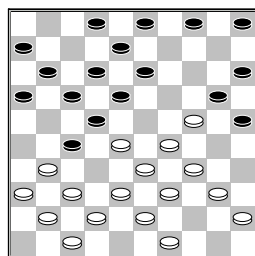
13...5-10
A) 14.31-26 18-23
 15.29x27 21x23
 16.47-42 20x29
 17.33x24 12-18
 18.40-35 7-12
 19.44-40 17-22
 20.37-31 13-19
 21.24x13 8x19
 22.39-33 9-13
 23.31-27 22x31
 24.36x27 4-9 25.49-44
 10-14 26.44-39 12-17
 27.46-41 2-7 28.41-36
 14-20 29.42-37 20-24
 30.37-32 17-22
 31.48-42 22x31
 32.36x27 3-8 33.33-28
 7-12 34.38-33 24-30
 35.35x24 19x30
 36.28x19 13x24
 37.32-28 9-13
 38.42-38 30-35
 39.34-30 35x44
 40.30x19 13x24
 41.39x50 25-30
 42.45-40 18-23
 43.28x19 24x13
 44.50-44 30-35
 45.40-34 6-11
 46.34-29 13-19

47.43-39 15-20
 48.27-22 8-13
 49.38-32 12-18
 50.32-28 18x27
 51.28-23 19x28
 52.33x31 11-17=
B) 14.47-42 18-23
 15.29x27 21x23
 16.46-41 (16.31-26
 20x29 17.33x24 13-18
 18.40-35 9-13
 19.37-31 7-11
 20.46-41 23-28
 21.41-37 3-9 22.38-33
 16-21 23.33x22 18x27
 24.31x22 17x28
 25.26x17 11x22
 26.43-38 met later
 remise.) 16...20x29
 17.33x24 12-18
 18.40-35 8-12
 19.34-30 25x34
 20.39x30 23-28
 21.24-20 15x24
 22.30x8 2x13 23.38-32
 10-14 24.32x23 18x29
 25.37-32 17-22
 26.41-37 13-19
 27.43-38 14-20
 28.44-39 20-25
 29.31-27 22x31
 30.36x27 19-23
 31.39-33 25-30
 32.35x24 29x20
 33.37-31 6-11
 34.31-26 11-17
 35.45-40 3-8 36.40-34
 9-13 37.33-28 20-25
 38.28x19 13x24
 39.48-43 4-9 40.43-39
 9-13 41.49-44 13-18
 42.38-33 17-22
 43.33-29 22x31
 44.26x37 24x33
 45.39x28 18-22
 46.28x17 12x21
 47.37-31 7-12
 48.34-29 12-18
 49.32-28 8-13
 50.31-26 18-22
 51.26x17 22x24
 52.17-12 13-18
 53.12x23 25-30
 54.23-18 24-29
 55.18-12 29-33=]
14.48-42 7-11 15.46-41
9-14 16.40-35



14-19

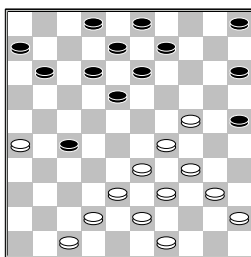
[In de database komt de volgende variant voor
 16...3-9 17.38-32
 27x38 18.43x32 22-27
 19.32x21 17x26
 20.28-23 16-21
 21.31-27 21x32
 22.37x28 11-17
 23.41-37 18-22
 24.42-38 13-18
 25.49-43 6-11 26.34-30
 25x34 27.39x30 20-25
 28.44-39 25x34
 29.39x30 11-16
 30.43-39 9-13 31.24-19
 13x24 32.30x10 5x14
 33.35-30 22-27
 34.37-31 26x37
 35.38-32 27x38
 36.33x31 16-21
 37.39-33 8-13 38.30-24
 18-22 39.45-40 21-26
 40.31-27 22x31
 41.36x27 13-18
 42.40-34 14-20
 43.47-42 2-7 44.42-37
 tot remise besloten al staat wit wel beter.]
17.44-40 19x30 18.35x24



4-10

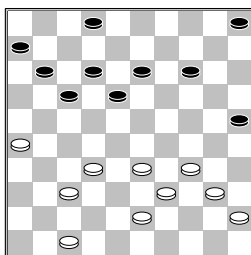
[De volgende variant komt voor in de database
 18...5-10 19.28-23
 10-14 20.40-35 14-19
 21.23x14 20x9 22.49-44
 13-19 23.24x13 8x19
 24.34-30 25x23
 25.33-28 22x33
 26.31x24 23-29
 27.39x28 29x20
 28.35-30 2-8 29.37-32
 9-13 30.41-37 4-9
 31.43-39 17-21
 32.28-23 13-18
 33.30-24 18x29
 34.24x33 later zou deze partij remise worden.]
19.28-23 10-14 20.31-26
27-31 21.36x27 22x31
22.41-36 17-22 23.36x27
22x31 24.26-21 16x27
25.37x26 14-19 26.23x14
20x9

(diagram)



27.38-32

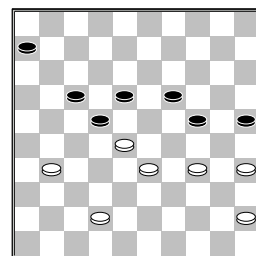
[Een andere optie is
 27.33-28 11-17
 28.38-33 18-22
 29.42-38 13-18
 30.28-23 6-11 31.47-41
 5-10 32.41-37 27-31
 33.40-35 31x42
 34.38x47 22-27
 35.24-19 17-22
 36.34-30 25x34
 37.39x30 27-32
 38.43-38 32x43
 39.49x38 10-14
 40.19x10 15x4 41.45-40
 9-14 42.47-42 3-9
 43.30-24 22-28
 44.33x13 8x28 45.40-34
 11-17 46.24-19 14x23
 47.29x7 2x11 48.42-37
 17-22 49.37-31 9-14
 50.35-30 14-19
 51.38-33 28x39
 52.34x43 11-16
 53.31-27 22x31
 54.26x37=]
27...27x38 28.43x32
12-17 29.42-37 9-14
30.24-20 15x24 31.29x9
3x14 32.49-43 8-12



33.33-29

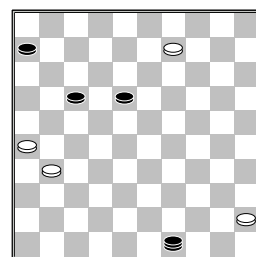
[Een andere optie is
 33.34-30 25x34
 34.40x29 5-10 35.37-31
 10-15 36.31-27 14-20
 37.43-38 20-24
 38.29x20 15x24
 39.39-34 18-23
 40.45-40 13-18
 41.33-28 23-29
 42.34x23 18x29
 43.47-42 2-7
 (43...24-30 44.40-35
 30-34 45.42-37 2-7
 46.35-30 34x25
 47.28-22 17x28
 48.32x34 11-17

49.38-33 12-18
 50.27-21 17-22
 51.33-29 22-28
 52.21-16 7-12 53.26-21
 6-11 54.16x7 12x1
 55.21-17 1-7=)
 44.40-35 17-21 45.26x8
 7-12 46.8x17 11x33
 47.27-22 33-39
 48.22-18 39-44
 49.18-13 44-49 50.13-9
 29-33 51.38x20 49x4
 52.20-15=]
33...17-22 34.43-38
14-20 35.47-42 5-10
36.40-35 10-15 37.39-33
13-19 38.32-28 2-8
39.28x17 12x21 40.26x17
11x22 41.38-32 8-12
42.32-28 12-17 43.37-31
20-24 44.29x20 15x24



45.31-26

[45.34-29 6-11
 46.29x20 25x14
 47.42-38 19-24
 48.38-32 24-29
 49.33x24 22x33
 50.35-30 33-39
 51.30-25 39-43
 52.24-20 14-19
 53.20-15 43-49
 54.32-27 49x21
 55.15-10 21-38 56.10-5
 19-24 57.5-14 11-16
 58.14-3=]
45...22-27 46.34-29
19-23 47.28x30 25x23
48.35-30 27-32 49.33-28
32-37 50.42x31 23x32
51.30-24 32-38 52.24-20
38-43 53.20-14 43-49
54.14-9



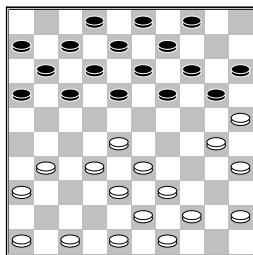
49-44

[beter voor zwart is
 >54...18-23 55.31-27
 49x16 56.9-4 23-28

57.4-31 28-33 58.31-48
 16-49 59.48-25 33-38
 60.25-14 38-42
 61.14-23 42-48 met
 goede winstkansen voor
 zwart.]
55.31-27 44-49 56.26-21
 1-1

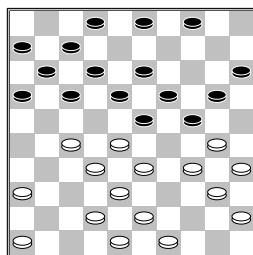
☐ **Meester,H. (Henk) [BL**
 ■ **Groot,de,Gerard**
 Nationale Clubcompe27-02-2016

1.32-28 19-23 2.28x19
14x23 3.33-28 23x32
4.37x28 16-21 5.39-33
10-14 6.44-39 5-10
7.34-30 14-19 8.30-25
10-14 9.40-34 11-16
10.34-30 6-11 11.41-37
1-6 12.37-32 21-26
13.50-44 26x37 14.42x31



20-24
 [in de database komt de
 volgende stand voor
 14...17-22 15.28x17
 12x21 16.47-42 7-12
 17.33-28 21-26
 18.39-33 26x37
 19.32x41 11-17
 20.41-37 16-21
 21.44-39 21-26
 22.37-32 17-22
 23.28x17 12x21
 24.33-28 18-22
 25.28x17 21x12
 26.39-33 19-23
 27.33-29 23x34
 28.30x39 12-18
 29.32-28 20-24
 30.46-41 14-20
 31.25x14 9x20 32.41-37
 8-12 33.38-32 4-9
 34.43-38 9-14 35.36-31
 14-19 36.31-27 3-9
 37.49-44 20-25
 38.39-33 9-14 39.37-31
 26x37 40.42x31 14-20
 41.31-26 24-30
 42.35x24 20x29
 43.33x24 19x30
 44.27-22 18x27
 45.32x21 12-18
 46.21-16 hier werd tot
 remise besloten]
15.47-42 18-23 16.31-27
13-18 17.44-40 8-13

18.39-34 14-20 19.25x14
9x20



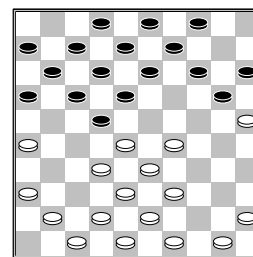
20.49-44
 [20.30-25? 24-30
 21.25x14 19x10 22.28x8
 30x37 23.42x31 2x13
 en zwart heeft een schijf
 meer]
20...2-8 21.44-39 20-25
22.34-29 23x34 23.40x20
25x34 24.39x30 15x24
25.46-41 17-21 26.41-37
18-23 27.37-31 21-26
28.43-39 26x37 29.42x31
12-17 30.30-25 7-12
31.31-26 3-9 32.48-43
17-21 33.26x17 11x31
34.36x27 12-17 35.45-40
9-14 36.40-34 17-21
37.34-29 23x34 38.39x30
13-18 39.43-39 18-23
40.39-34 8-13 41.34-29
23x34 42.30x39 13-18
43.28-23 19x37 44.38-32
37x28 45.33x13 21x32
46.13-8 32-37 47.8-3
14-20 48.25x14 37-42
49.39-34 42-47 50.3-17
47-41 51.17-33 41x5
52.33x20 16-21 53.20-38
21-26 54.38-27 6-11
55.27-22 11-16 56.22-27
5-14 57.27-36 14-5
58.34-29 5-14 59.29-24
 1-1

☐ **Giphart,J. (Hans)**
 ■ **Winkel,van,H.J.J.M. (**
 Nationale Clubcompe27-02-2016

1.32-28 19-23 2.28x19
14x23 3.37-32 10-14
4.41-37 14-19 5.46-41
5-10 6.35-30 10-14
7.30-25 17-22 8.34-29
23x34 9.40x29 19-23
10.44-40 23x34 11.40x29
11-17 12.32-28 6-11
13.31-26 1-6 14.37-32

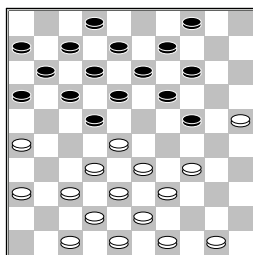
(diagram)

In de database bevinden
 zich 2 varianten **13-19**
 [14...16-21 15.41-37
 11-16 16.50-44 13-19
 17.37-31 8-13 18.42-37

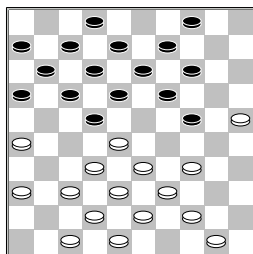


20-24 19.29x20 15x24
 20.47-42 3-8 21.39-34
 21-27 22.32x21 16x27
 23.33-29 24x33
 24.28x39 7-11 25.37-32
 11-16 26.32x21 16x27
 27.42-37 6-11 28.34-29
 2-7 29.37-32 11-16
 30.32x21 16x27
 31.39-33 7-11 32.44-40
 19-23 33.49-44 23x34
 34.40x29 14-19
 35.25-20 11-16
 36.44-40 4-10 37.20-15
 10-14 38.48-42 19-24
 39.29x20 14x25
 40.15-10]
 [14...20-24 15.29x20
 15x24 16.50-44 16-21
 17.36-31 11-16
 18.31-27 22x31
 19.26x37 18-22
 20.39-34 24-30
 21.44-39 13-18
 22.34-29 30-35
 23.39-34 7-11 24.43-39
 21-27 25.32x21 17x26
 26.28x17 11x22
 27.38-32 9-13 28.32-28
 13-19 29.28x17 12x21
 30.42-38 3-9 31.38-32
 21-27 32.32x21 16x27
 33.33-28 18-22
 34.28x17 19-23
 35.29x18 27-32
 36.37x28 8-12 37.18x7
 2x44 38.49x40 35x44
 39.45-40 44x35
 40.41-37 14-19
 41.37-32 19-24
 42.48-43 9-13 43.32-28
 24-29 44.34x23 35-40
 45.28-22 40-45
 46.22-17 45-50
 47.17-12 50-11
 48.23-18 13x22 49.12-8
 11-16 50.43-39 6-11
 51.39-34 16-49
 52.34-30 22-28
 53.30-24 28-33
 54.24-19 33-38
 55.47-41 26-31
 56.19-13 38-42
 (56...31-36 57.41-37
 38-43 58.8-3 49-35
 59.3-8 35-49 60.8-3
 49-35 61.3-8 35-40

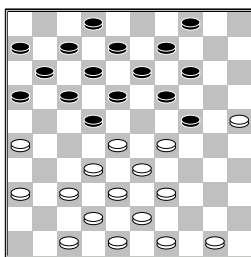
62.8-21 43-49 63.21-16
 40-7 64.13-9 4x13
 65.37-32 49x27
 66.16x32 7-29 67.32-27
 13-19 68.27-32 19-24
 69.32-16 29-7
 70.16-38=) 57.8-2
 42-48 58.2x16 48-43
 59.16-2 43-16=]
15.41-37 9-13 16.45-40
3-9 17.40-34 20-24
18.29x20 15x24



19.49-44

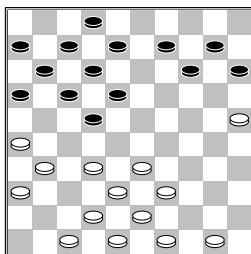


[19.50-44 4-10
 20.47-41 18-23
 21.33-29 22x33
 22.29x18 12x23
 23.38x18 13x22
 24.43-38 19-23
 25.49-43 8-12 26.34-29
 23x34 27.39x19 14x23
 28.43-39 22-27
 29.32x21 16x27
 30.37-32 11-16
 31.32x21 16x27
 32.41-37 6-11 33.37-32
 11-16 34.32x21 16x27
 35.42-37 10-15
 36.38-33 9-14 37.48-43
 17-22 38.39-34 23-28
 39.44-39 2-8 40.43-38
 12-17 41.34-30 8-13
 42.39-34 28x39
 43.34x43 22-28
 44.30-24 7-12 45.43-39
 12-18 46.37-31 17-22
 47.38-33 28-32
 48.33-29 13-19
 49.24x13 18x9 50.39-33
 14-19 51.25-20 15x24
 52.29x20 19-23
 53.33-28 22x33
 54.31x22]
 [19.34-29?
 gelukkig zag ik net op

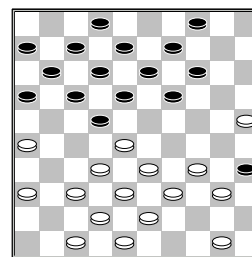


tijd dat dit niet mocht

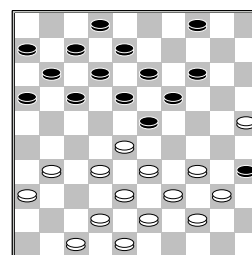
A) 19...22-27
 20.29x20 18-23
 21.32x21 23x41
 22.42-37 41x32
 23.38x27 17-22
 24.27x18 16x27
 25.43-38 13x22
B) Ik had het volgende
 berekend voor ik zag dat
 34-29 niet mocht
 19...4-10? 20.29x20
 19-23 21.28x19 13x15
 22.37-31



B1) 22...8-13
B2) 22...18-23
 23.32-27 12-18
 (23...23-28 24.27x18
 12x23 25.33x22 17x28
 26.26-21 16x27
 27.31x33) 24.27-21
 16x27 25.33-28 22x44
 26.31x4]
19...24-30
 [Ik dacht tijdens de
 partij dat dit winst was
 voor zwart 19...4-10
 20.34-29 (dacht dat
 dit uit was namelijk
 20.36-31 19-23
 21.28x30 maar dit wordt
 dus geen dam voor zwart.
 22-28) de volgende
 variant die ik slecht
 inschatte voor mij is
 gelijkwaardig nu ik hem op
 het bord zie. 20...22-27
 21.29x20 18-23
 22.32x21 23x41
 23.20-15 16x27 24.15x4
 41-46 25.39-34 toch
 laat je dit niet toe tegen
 een tegen stander met 140
 ratingpunten minder.]
20.44-40 30-35
21.50-44

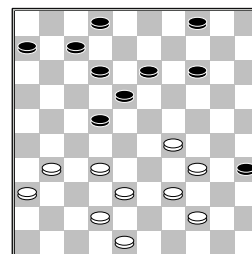


[niet goed voor wit is
 21.50-45 35x44
 22.39x50 22-27
 23.32x21 16x27 en
 zwart staat beter, vandaar
 mijn tekstzet.]
21...18-23 22.37-31
13-18 23.31-27 22x31
24.26x37 9-13 25.37-31



16-21

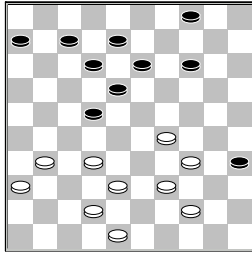
[zelf verwachtte ik de
 volgende variant
 25...18-22 26.31-27
 22x31 27.36x27 13-18
 28.33-29 17-22
 29.28x17 11x31
 30.32-28 23x32
 31.38x36 met een
 makkelijkere stand voor
 zwart.]
26.33-29 14-20 27.25x14
19x10 28.28x19 13x33
29.39x28 21-26 30.43-39
26x37 31.42x31 17-22
32.28x17 11x22 33.34-29
10-14 34.40-34 8-13
35.47-42



even op een zetje spelen
 wet niet zo moeilijk is
2-8?

(diagram)

[zelf verwachtte ik de
 volgende variant



```

>35...13-19   36.38-33
2-8   37.32-28   14-20
38.28x17   12x21
39.42-37   8-13   40.33-28
21-26   41.39-33   6-11
42.37-32   26x37
43.32x41   7-12   44.41-37
4-10   45.37-32   19-24
46.48-43   20-25
47.29x20   25x14
48.32-27   13-19
49.33-29   10-15
50.43-39   met iets
makkelijkere stand voor
wit.   ]
36.32-28
[   Het zet je had ook zo
genomen kunnen worden
36.44-40   35x24
37.32-28   22x33   38.38x9
]
36...22x24   37.44-40
35x33   38.38x9   18-22
39.9x27   8-13   40.42-38
13-19   41.38-33   19-24
42.48-43   4-9   43.33-28
9-14   44.43-39   12-18
45.39-33   14-20   46.27-22
18x27   47.31x22   7-12
48.33-29   24x33   49.28x39
20-24   50.36-31   6-11
51.31-26   12-17   52.22-18
11-16   53.39-33
2-0

```