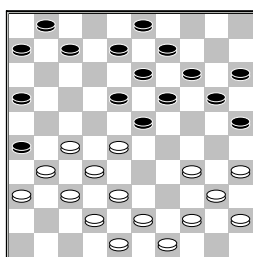


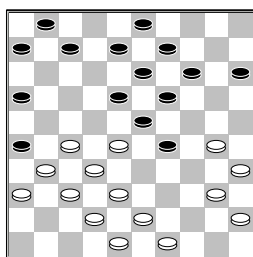
Majeed, T. (Talha)
 Giphart, J. (Hans)
 Nationale Clubcom 03-10-2015

1.32-28 20-25 2.37-32
 14-20 3.41-37 10-14
 4.46-41 5-10 5.31-27
 19-23 6.28x19 14x23
 7.33-28 9-14 8.28x19
 14x23 9.39-33 10-14
 10.44-39 13-19 11.50-44
 17-21 12.36-31 8-13
 13.33-28 21-26 14.41-36
 2-8 15.38-33 12-17
 16.42-38 17-22 17.28x17
 11x22 18.47-42 4-9
 19.33-28 22x33 20.39x28



7-12

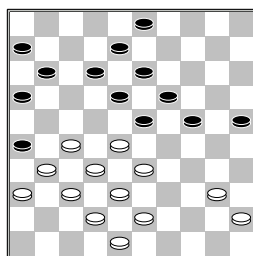
[In deze stand is volgens de database enkele keren voor 20...20-24
 21.44-39 24-29
 22.34-30 25x34
 23.39x30



7-12

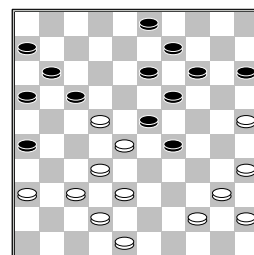
A) 24.40-34 29x40
 25.35x44 15-20
 26.43-39 20-24
 27.30-25 1-7 28.44-40
 7-11 29.49-43 14-20
 30.25x14 9x20
A1) 31.40-35 20-25
 32.45-40 3-9
 33.39-33 24-30
 34.35x24 19x30
 35.28x19 13x24
 36.32-28 9-13
 37.40-34 30x39
 38.33x44 13-19
 39.38-32 18-23
 40.42-38 23-29
 41.43-39 24-30
 42.27-22 8-13
 43.31-27 29-34
 44.48-43 12-18

45.36-31 30-35
 46.39x30 25x34
 47.43-39 34x43
 48.38x49 11-17
 49.22x11 16x7
 50.49-43 7-12
 51.43-39 6-11
 52.39-34 19-24
 53.34-30 24-29
 54.30-25 29-34
 55.25-20 34-40
 56.44-39 40-45
 57.20-15 45-50
 58.39-34 50x17
 59.15-10 18-23
 60.27-21 13-18
 61.10-4
A2) 31.39-33 20-25



A2a) 32.43-39 11-17
 33.27-21 16x27
 34.31x11 6x17
 35.37-31 26x37
 36.42x31 24-29
 37.33x24 19x30
 38.28x19 13x24
 39.38-33 18-23
 40.40-34 12-18
 41.33-28 8-12
 42.28x19 24x13
 43.48-43 3-9
 44.43-38 9-14
 45.38-33 14-19
 46.32-28 17-21
 47.31-26 12-17
 48.34-29 19-24
 49.29x20 25x14
 50.45-40 14-19
 51.36-31 18-22
 52.40-35 21-27
 53.35x24 27x36
 54.24-20 19-24
 55.20x29 17-21
 56.26x17 22x11
 57.28-23 36-41
 58.23-19 13x24
 59.29x20 41-46
 60.39-34 46-37
 61.20-15 37-14
 62.34-29 11-17
 63.29-23 14x50
 64.15-10
A2b) 32.27-22 18x27
 33.31x22 12-18
 34.37-31 26x37
 35.42x31 18x27

36.31x22 11-17
 37.22x11 16x7
 38.36-31 8-12
 39.43-39 12-17
 40.31-27 7-11
 41.48-43 11-16
 42.40-34 17-21
 43.45-40 21-26
 44.40-35 6-11
 45.34-30 (45.27-22
 11-17 46.22x11 16x7
 47.28-22 24-30
 48.35x24 19x30
 49.32-28 23x32
 50.38x27 7-11
 51.33-29 3-8
 52.29-23 8-12
 53.34-29 11-16
 54.43-38 30-35
 55.39-34 25-30
 56.34x25 35-40
 57.38-33 40-44
 58.23-19 13x24
 59.29x20 44-50
 60.33-29 50x17
 61.20-14 17-21
 62.27-22 21-38
 63.29-23 38-20
 64.14-10 20-9
 65.23-18 12x23
 66.10-5) 45...25x34
 46.39x30 3-8
B) 24.49-44 1-7
 25.30-25 18-22
 26.27x18 13x33
 27.43-39 8-13
 28.39x28 12-17
 29.31-27 7-11
 30.27-22



B1) 30...17-21
 31.35-30 11-17
 32.22x11 6x17
 33.37-31 (33.40-35
 17-22 34.28x17 21x12
 35.44-39 16-21
 36.36-31 12-17
 37.30-24 29x20
 38.31-27) 33...26x37
 34.42x31
B2) 30...16-21
 31.35-30 11-16
 32.22x11 6x17
 33.37-31 (33.40-35
 17-22 34.28x17 21x12
 35.44-39 16-21

36.36-31 12-17
 37.30-24 29x20
 38.31-27 13-18
 39.27x16 18-22
 40.45-40 9-13
 41.40-34 3-8
 42.34-30 8-12
 43.38-33 20-24
 44.42-38 13-18
 45.48-42 15-20
 46.39-34 23-28
 47.32x23 18x40
 48.35x44 24x35
 49.44-39 12-18
 50.39-34 19-23
 51.37-32 14-19
 52.25x14 19x10
 53.33-28 22x33
 54.38x29 26-31
 55.29-24 10-15
 56.42-38 31-36)
 33...26x37 34.42x31

B2a) 34...21-26

35.48-43 26x37
 36.32x41 23x32
 37.38x27 19-23
 38.41-37 29-34
 39.40x18 13x42

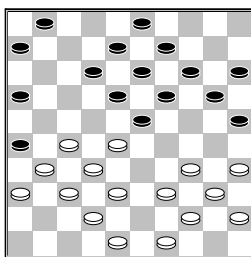
B2b) 34...29-34

35.40x18 13x42
 36.48x37 15-20
 37.45-40 20-24
 38.40-35 17-22
 39.31-26 21-27
 40.32x21 16x27
 41.36-31 27x36
 42.26-21 22-27
 43.21x32 9-13
 44.32-27 3-8
 45.27-22 8-12
 46.44-39 24-29
 47.39-34 29x40
 48.35x44 19-23
 49.30-24 14-19
 50.22-18 13x22
 51.24x13 23-29
 52.13-9 29-34
 53.9-4 22-27
 54.4x31 36x27
 55.25-20 12-18
 56.20-14 18-23
 57.14-9 23-28
 58.9-3 27-31
 (58...28-33 59.3-25
 33-39 60.44x33
 34-40 61.25-39
 40-45 62.39-50)
 59.37x26 28-33
 60.3-25 33-39
 61.44x33 34-40
 62.25-39 40-45
 63.39-50]

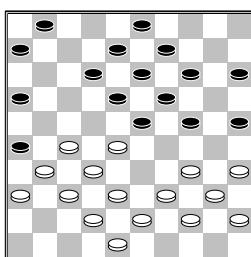
21.43-39

(diagram)

6-11



[21...1-7 22.49-43
 (22.48-43 7-11
 23.34-29 23x34
 24.40x29 25-30
 25.35x24 19x30
 26.38-33 30-35
 27.42-38 14-19
 28.45-40 20-25
 29.39-34) 22...20-24
 23.34-30 25x34
 24.40x20 15x24]
 [21...20-24 22.49-43

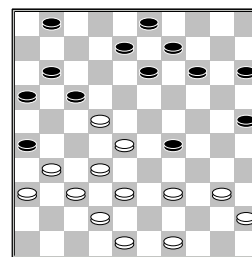


A) 22...24-29
 23.34-30 25x34
 24.39x30 1-7 25.30-25
 18-22 26.27x18 13x33
 27.43-39 8-13
 28.39x28 12-17
 29.31-27
B) 22...1-7 23.34-30
 25x34 24.40x20 15x24
 25.39-34 23-29
 (25...24-29 26.44-39
 29x40 27.35x44 14-20
 28.45-40 7-11
 29.40-34 20-24
 30.44-40 11-17
 31.27-21 16x27
 32.31x11 6x17
 33.40-35 24-29
 34.36-31 29x40
 35.35x44) 26.34x23
 18x29
C) 22...14-20
 23.34-30 25x34
 24.39x30]
22.39-33 23-29 23.34x23
18x29 24.33x24 19x30
25.35x24 20x29 26.27-22
12-17 27.44-39

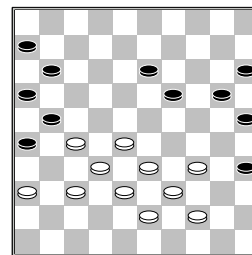
(diagram)

8-12

[Deze stand heeft zich
 1 maal eerder voor gedaan



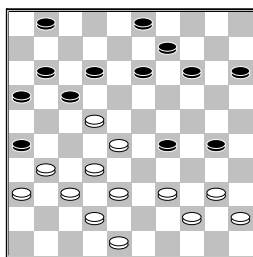
in de Turbodatabase
 database het ging toen
 verder op de volgende
 manier 27...14-19
 28.31-27 1-6 29.49-44
 9-14 30.40-35 14-20
 31.44-40 19-24
 32.40-34 29x40
 33.35x44 13-19
 34.28-23 19x28
 35.22x33 17-21
 36.45-40 8-13 37.40-34
 24-30 38.48-43 13-19
 39.33-28 3-8 40.38-33
 8-13 41.42-38 30-35



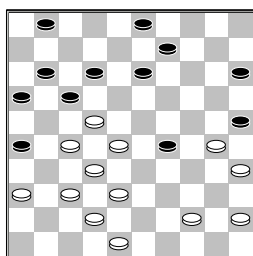
A) 42.44-40 35x44
 43.39x50 20-24
 44.34-29 25-30
 45.29x20 15x24
 46.28-22 19-23
 47.33-28 23-29
 48.43-39 26-31
 49.37x17 13-18
 50.22x13 11x42
 51.13-9 42-48 52.9-3
 48x34 53.27-22 29-33
 54.50-44 6-11 55.3-26
 34-1 56.22-17 11x22
 57.32-27 22x31
 58.26x15
B) 42.28-23 19x28
 43.33x22 11-17
 44.22x11 6x17
 45.38-33
B1) 45...13-18
 46.37-31 26x28
 47.33x13 21x32
B2) 45...13-19
 46.33-28 19-24
 (46...20-24 47.28-22
 17x28 48.32x14 21x41
 49.36x47) 47.34-30
 25x34 48.39x19]

28.49-44 25-30

(diagram)



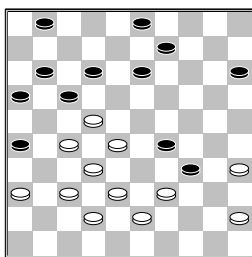
29.31-27
 [29.39-33 30-35
 30.33x24 14-20
 31.24-19 (31.48-43
 20x29 32.43-39 15-20
 33.31-27 12-18
 34.39-34 18-23 35.28x8
 3x12 36.34x23 17x19)
 31...13x24 32.22-18
 12x23 33.28x30 35x24
]
 29...14-20 30.40-35
 30-34 31.39x30 20-25



32.48-43?
 [32.30-24 29x20
 33.44-40 25-30
 34.35x24 20x29
 35.40-34 29x40
 36.45x34 12-18
 37.48-43 9-14 38.34-29
 1-6 39.29-24 14-20
 40.24-19 13x24
 41.22x13 24-30
 42.27-21 16x27
 43.32x12 11-17
 44.12x21 26x17
 45.43-39 20-25
 46.38-32 30-34
 47.39x30 25x34
 48.28-22 17x28
 49.32x23 6-11 50.23-18
 11-17 51.13-9 3x14
 52.18-13 14-19
 53.13x24 34-40
 54.24-19 40-44
 55.19-13 44-50
 56.42-38 50-28
 57.38-32 28-39 58.13-8
 39-48]
 32...25x34 33.44-39

(diagram)

15-20??
 [>33...26-31 34.39x30
 13-19 35.37x26 19-23
 36.28x19 17x39 winst



]
 34.39x30 20-25 35.30-24
 29x20 36.45-40 12-18
 37.40-34 26-31 38.37x26
 18-23 39.28x8 17x30
 40.35x15 3x12 41.15-10
 9-14 42.10x19 25-30
 43.19-14 30-34 44.14-9
 34-40 45.9-3 12-18
 46.3-20 18-23 47.20-14
 23-29 48.14-28 1-6
 49.26-21 40-45 50.28-50
 29-34 51.36-31?
 [>51.38-33! 34-40
 52.36-31 40-44
 53.50x39 45-50
 54.39-48 50x37
 55.48x31]
 51...34-40?
 [Remise is
 >51...11-17 52.21x12
 6-11 53.50x6 45-50
 54.6-1 50-6 55.12-8
 (55.12-7 34-40 56.7-2
 40-44 57.38-32 44-49)
 55...6-17 56.1x45 17x3
 57.45-23 3-25
 (57...3-26 58.23-37
 26-21 59.38-32 21-8
 60.32-28 8-13 61.28-23
 16-21 62.27x16 13x36)
 58.38-32 25-20
 59.27-22 16-21
 60.22-18 20-9 61.18-12
 9x36]
 52.31-26 40-44 53.50x28
 11-17 54.21x12 45-50
 55.28-41
 2-0 (0.58/0.05)