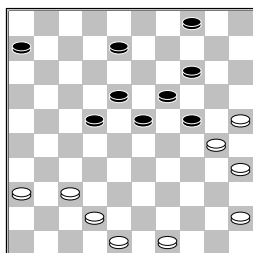
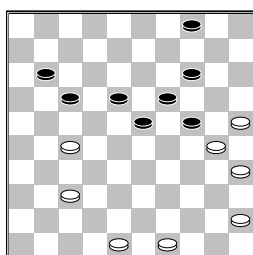


Prins, F.  
 Giphart, J. (Hans)  
 Clubcompetitie ZH11-02-2013

1.34-30	20-25	2.31-26
25x34	3.39x30	15-20
4.44-39	20-24	5.50-44
18-23	6.30-25	12-18
7.33-29	23x34	8.40x20
10-15	9.39-34	15x24
10.34-30	7-12	11.44-40
5-10	12.38-33	1-7
13.42-38	18-23	14.47-42
13-18	15.33-29	24x33
16.38x29	23x34	17.30x39
19-24	18.39-34	8-13
19.43-38	13-19	20.34-29
24x33	21.38x29	19-24
22.29x20	10-15	23.42-38
15x24	24.37-31	3-8
25.40-34	9-13	26.31-27
13-19	27.36-31	18-23
28.34-30	12-18	29.41-36
17-22	30.27-21	16x27
31.32x21	22-28	32.21-16
11-17	33.38-32	28x37
34.31x42	7-11	35.16x7
2x11	36.46-41	17-21
37.26x17	11x22	38.41-37

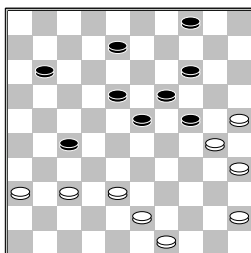


22-27  
 [ 38...8-12 39.37-32  
 6-11 40.32-27 22x31  
 41.36x27 12-17  
 42.42-37

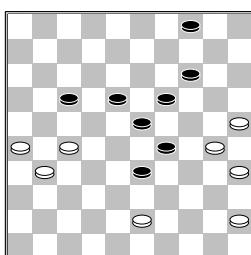


11-16 ( tijdens de  
 training met Kirsty en  
 Berke kwamen we tot de  
 volgende variant  
 42...23-28 43.37-31  
 11-16 44.31-26 17-22  
 45.48-43 22x31  
 46.26x37 16-21  
 47.43-38 21-27  
 48.49-43 18-23  
 49.45-40 28-32

50.37x28	23x32
51.40-34	32-37
52.38-33	37-41
53.43-38	41-47
54.34-29	4-9
55.29x20	
9-13	56.20x18
19-24	
57.30x19	27-32
58.38x27	47x36)
43.49-43	23-28
44.37-31	17-21
45.48-42	21x32
46.42-38	24-29
47.38x27	19-23
]	
39.42-38	6-11
40.48-43	

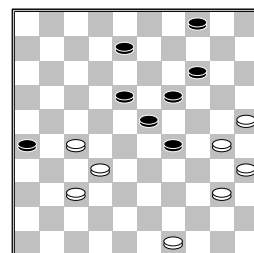


11-16  
 [ 40...11-17 41.37-31  
 (41.38-32 27x38  
 42.43x32 18-22  
 43.37-31 22-28  
 44.32-27 28-33  
 45.49-43 24-29  
 46.31-26 8-12 47.36-31  
 12-18 48.27-21 4-9  
 49.21x12 18x7 50.26-21  
 23-28 51.45-40 19-23  
 52.43-39 33x44  
 53.40x49 28-32  
 54.49-43 29-33)  
 41...18-22 42.38-32  
 27x38 43.43x32 22-28  
 44.32-27 28-33  
 45.49-43 24-29  
 46.31-26 8-12 47.36-31  
 12-18



48.27-21  
 A) 48...4-10 49.21x12  
 18x7 50.26-21 23-28  
 51.45-40 19-23  
 52.43-39 33x44  
 53.40x49 28-33  
 54.49-43 23-28  
 55.30-24 29x20  
 56.31-27 7-12  
 57.21-16 12-17  
 58.27-21 17x26  
 59.16-11 28-32

60.11-7	33-38
61.43-39	38-42
62.7-1	
20-24	63.39-33
32-38	
(63...32-37	64.1-23
42-47	65.23x46
47x29	
66.46-41	29-47
67.41-37)	64.1-45
38x29	65.45x23
42-47	
66.23-37	47-38
67.37-41	38-47
68.41-37	47-29
69.37-41	29-47
70.41-37	
B) 48...4-9	49.21x12
18x7	50.26-21
23-28	
51.45-40	19-23
52.43-39	33x44
53.40x49	28-32
54.49-43	29-33
55.30-24	33-38
56.43-39	38-42
57.24-20	42-47
58.20-15	(58.31-26
47x15	59.21-17
15-42	
60.35-30	23-29)
58...32-37	59.31x42
47x50	]
41.38-32	27x38
42.43x32	
16-21	43.36-31
21-26	
44.31-27	24-29
45.45-40	



29-33  
 [ 45...8-12 46.40-34  
 29x40 47.35x44 23-28  
 48.32x23 19x28  
 49.44-39 4-9 50.30-24  
 12-17 51.24-20 9-13  
 52.20x9 13x4 53.27-21  
 28-32 54.21x23 32x41  
 55.23-18 41-46 ]  
 46.30-24 19x30 47.25x34  
 8-12 48.49-44 14-20  
 49.44-39 33x44 50.40x49  
 20-24 51.49-43 4-9  
 52.43-39 24-29 53.39-33  
 29x38 54.32x43 23-29  
 55.34x23 18x29 56.43-39  
 12-18 57.37-32 9-14  
 58.39-33 29x38 59.32x43  
 14-19 60.35-30 18-23  
 61.27-22 23-28 62.22x33  
 26-31 63.33-28 31-36  
 64.28-22 36-41 65.22-17  
 41-46 66.17-12 46-23  
 67.12-8 23-29 68.8-3  
 1-1