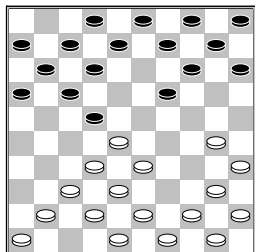


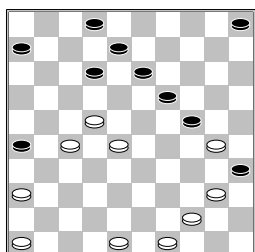
□ Reuvekamp, H. (Harwin)
 ■ Bremmer, W. (Wim)
 Nationale Clubcom 12-12-2015

1.32-28 18-22 2.37-32
 12-18 3.41-37 7-12
 4.47-41 1-7 5.34-30
 20-25 6.31-27 25x34
 7.39x30 22x31 8.36x27
 18-22 9.27x18 13x22



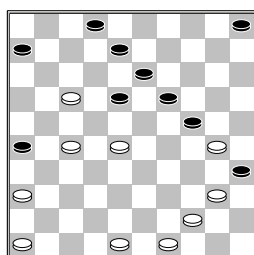
10.44-39
 [De volgende variant staat in de database van TDAM 10.30-25 19-24
 11.32-27 22x31
 12.37x26 16-21
 13.44-39 21-27
 14.50-44 11-16
 15.40-34 17-22
 16.28x17 12x21
 17.26x17 27-32
 18.38x27 24-30
 19.35x24 14-20
 20.25x14 9x36 z+]

10...9-13 11.50-44 3-9
 12.40-34 16-21 13.30-25
 11-16 14.28-23 19x28
 15.32x23 13-19 16.33-28
 22x33 17.39x28 21-27
 18.34-30 9-13 19.30-24
 19x30 20.25x34 7-11
 21.43-39 4-9 22.35-30
 13-19 23.38-33 9-13
 24.45-40 17-22 25.28x17
 11x22 26.33-28 22x33
 27.39x28 15-20 28.41-36
 20-24 29.37-31 24x35
 30.31x22 19-24 31.34-30
 14-19 32.23x14 10x19
 33.42-37 16-21 34.37-31
 21-26 35.31-27



12-18
 [Grappige variant is nu >35...26-31 36.27-21
 31-37 37.49-43 24-29

38.30-25 19-24
 39.43-38 13-19
 A) 40.22-17 2-7
 41.21-16 12x21
 42.16x27 8-12
 43.27-22 12-18
 44.22x13 19x8
 45.38-32 29-33
 46.28x39 37x28
 47.48-42
 B) 40.38-32 19-23
 41.28x30 37x26
 42.30-24 29x20
 43.25x14 8-13
 44.40-34 12-18
 45.34-29 18-22
 46.29-24 2-8 47.48-43
 22-28 48.24-20 6-11
 49.20-15 11-17
 50.15-10 13-19
 51.14x32 5x14
 52.32-27 14-19=
 C) 40.21-16 12-17
 41.22x11 6x17
 42.38-32 29-33
 43.28x39 37x28
 44.48-43 19-23
 45.36-31 8-13
 46.46-41 (46.43-38
 13-19 47.38-33 28-32
 48.40-34 32-38
 49.33x42 24-29
 50.34-30 35x24
 51.44-40 29-33
 52.39x28 23x32
 53.31-27 32x21
 54.16x27 2-8=
 46...13-18 47.41-37
 5-10 48.43-38 24-29
 49.38-32 10-14
 50.39-34 2-7 +]
 36.22-17

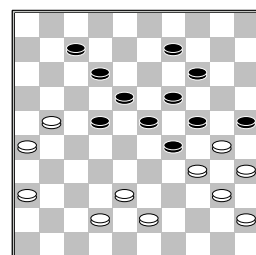


2-7??
 [zwart had het gelijk kunnen houden door >36...24-29 37.48-43
 35x24 38.44-39
 A) 38...29-34
 39.40x20 19-23
 40.28x19 13x15
 41.27-21 5-10
 42.46-41 10-14
 43.39-34 15-20
 44.34-29 18-22
 45.17x28 26x17=
 B) 38...29-33

39.28-23 33x35
 40.23x3 26-31
 (40...35-40 41.49-44
 40x38 42.36-31 26x37
 43.17-11 6x17 44.3x15
 W+)]
 37.17-12 8x17 38.27-22
 18x27 39.28-23 19x28
 40.30x8 5-10 41.8-2
 7-12 42.2-19
 2-0

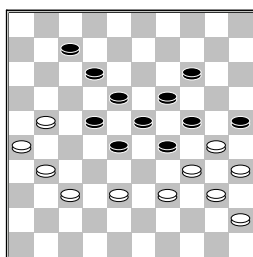
□ Malahé, P.M. (Pertap)
 ■ Jong, de, G.L.E. (Gerlo)
 Nationale Clubcom 12-12-2015

1.34-30 17-22 2.40-34
 11-17 3.45-40 6-11
 4.30-25 19-23 5.31-27
 22x31 6.36x27 13-19
 7.34-30 8-13 8.39-34
 20-24 9.43-39 2-8
 10.49-43 14-20 11.25x14
 9x20 12.30-25 4-9
 13.25x14 9x20 14.33-29
 24x33 15.39x28 10-14
 16.41-36 1-6 17.43-39
 5-10 18.50-45 3-9
 19.37-31 17-22 20.28x17
 11x22 21.42-37 6-11
 22.47-42 11-17 23.31-26
 22x31 24.36x27 17-22
 25.27-21 16x27 26.32x21
 19-24 27.34-30 23-29
 28.30x19 14x23 29.39-34
 13-19 30.44-39 10-14
 31.46-41 8-13 32.41-36
 20-24 33.37-31 22-28
 34.48-43 15-20 35.42-37
 18-22 36.34-30 20-25
 37.39-34 13-18 38.37-32
 28x37 39.31x42

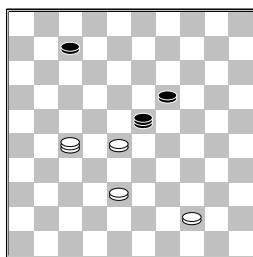


9-13
 [zwart mist een winnende combinatie >39...29-33 40.38x20
 22-27 41.21x32 23-29
 42.34x23 19x39
 43.20-15 25x34
 44.40x29 14-20
 45.15x24 9-14 46.24-20
 14x25 47.29-24 39-43
 48.35-30 25x34
 49.45-40 34x45
 50.24-20 45-50
 51.20-14 43-48
 52.14-10 48-37 53.10-4

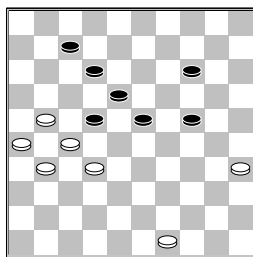
37-28]
40.36-31 22-28 41.42-37
18-22 42.43-39 13-18



43.38-32
 [wit mist een mogelijke remise combinatie via:
 >43.38-33 29x38
 44.37-32 38x36
 45.39-33 28x39
 46.34x43 25x34 47.40x39
 36-41 48.43-38 41-46
 49.9-4 23-29 50.45-40
 46-23 51.40-34 29x40
 52.35x44 23-34
 53.21-17 12x21
 54.26x28 34-23 55.4x27



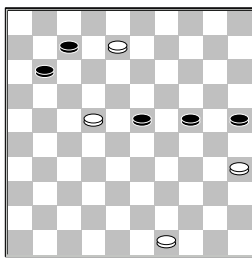
23x40]
43...29-33 44.32-27
33x44 45.40x49 24-29
46.49-43 29x40 47.45x34
28-33 48.43-39 33x44
49.34-29 25x34 50.29x49
19-24 51.37-32



14-20? geeft wit de kans om remise te maken
 [Beter voor zwart is:
 >51...23-29 52.21-16
 14-20 53.27-21 20-25
 54.49-43 29-34
 55.32-28 22x33
 56.21-17 12x21
 57.26x17 18-23
A) 58.35-30 24x35
B) 58.17-11 23-29 (
 geen winst is

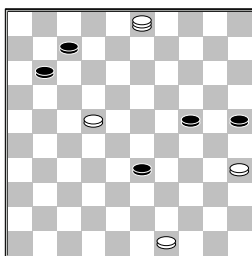
58...33-39 59.11x2
 39x48 60.2x39 48x34
 61.16-11 23-28
 62.35-30 34-1
 63.30-24 28-33
 64.24-19 33-38
 65.19-14=) 59.11x2
 33-39 60.2x30 39x48
 61.30x39 48x34
 62.16-11 29-33
 63.35-30 34-1
 64.30-24 25-30
 65.24x35 33-38
 66.35-30 38-42
 67.31-27 (67.30-24
 42-47 68.24-19 47-41
 69.19-13 41-36 +)
 67...42-47 68.11-6
 47-15 69.27-21 15-29
 70.21-16 29-33
 71.16-11 1-45 72.6-1
 33x6 73.30-24 6-39
 +]

52.21-17 22x11 53.32-28
23x21 54.26x8 20-25
55.31-27 18-23 56.27-22



23-29
 [>56...11-16 57.22-17
 (57.8-3 16-21 58.3x26
 7-12 59.26x30 25x34=)
 57...16-21 58.17x26
 7-12 59.8x17 23-28
 60.17-11 28-32
 61.26-21 32-37 62.11-7
 37-42 63.7-1 42-48
 64.21-17 48-26
 65.17-11 26-42=]

57.8-3 29-33

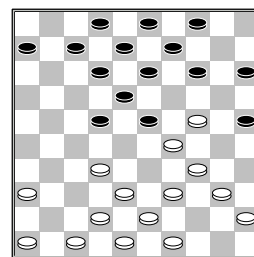


58.3-9
 [Wit mist de winst via
 >58.49-43 11-16 59.3-9
 25-30 60.9-18 16-21
 61.18x1 21-26 62.1-12
 26-31 63.12-26 33-39
 64.43x25 31-36
 65.26-42 36-41

66.42x20 41-46 +]
58...7-12 59.9-14 11-17
60.22x11 33-38 61.14-3
12-18 62.3-26 24-29
63.11-7 29-34 64.7-1
2-0

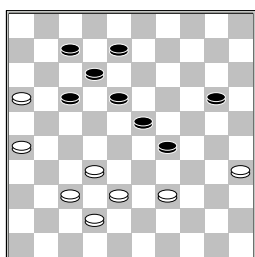
□ **Wezenberg, J.J. (Johan)**
 ■ **Groot, de, G.J. (Gerard)**
 Nationale Clubcomp12-12-2015

1.34-29 17-22 2.40-34
11-17 3.45-40 6-11
4.50-45 1-6 5.32-28
19-23 6.28x19 14x23
7.35-30 10-14 8.40-35
14-19 9.31-26 20-25
10.30-24 19x30 11.35x24
5-10 12.44-40 16-21
13.37-32 22-28 14.33x22
17x37 15.26x17 11x22
16.41x32 10-14



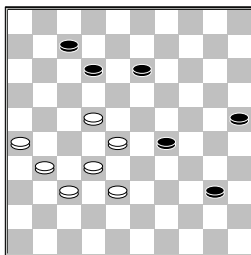
17.49-44
 [le variant aanwezig in de database van TDAM
 17.40-35 14-20
 18.36-31 9-14 19.32-27
 12-17 20.46-41 8-12
 21.41-36 14-19
 22.35-30 6-11 23.31-26
 22x31 24.26x37 17-22
 25.38-32 11-17
 26.37-31 7-11 27.32-27
 2-7 28.42-38 4-9
 29.48-42 9-14 30.31-26
 22x31 31.26x37 3-9
 32.36-31 23-28
 33.38-32 18-23
 34.29x18 20x40
 35.45x34 13x22
 36.32x23 19x28
 37.43-38 9-13 38.31-26
 14-20 39.47-41 11-16
 40.38-33 16-21
 41.42-38 21-27
 42.41-36 12-18
 43.38-32 27x40
 44.37-32 25x43 45.32x1
 43-48 46.1x45 13-19
 47.45-1 20-24 48.1-6
 22-28 49.6x20 15x24
]
 [2e Variant die bezig is in TDAM 17.38-33
 14-20 18.42-38 13-19
 19.24x13 8x19 20.40-35
 2-8 21.49-44 9-13

22.48-42 20-24
 23.29x20 25x14
 24.34-29 23x34
 25.39x30 7-11 26.44-39
 19-23 27.30-25 13-19
 28.32-27 22x31
 29.36x27 8-13 30.45-40
 4-9 31.40-34 11-17
 32.46-41 6-11 33.34-29
 23x34 34.39x30 18-23
 35.33-29 23x34
 36.30x39 12-18
 37.41-37 19-24
 38.38-33 18-23
 39.27-22 17x28
 40.33x22 14-20
 41.25x14 9x20 42.42-38
 3-8 43.37-31 8-12
 44.31-26 12-17
 45.47-41 17x28
 46.26-21 24-30
 47.35x24 20x29
 48.41-37 13-19
 49.37-31 11-16
 50.31-27 28-33
 51.39x28 23x32]
 17...14-20 18.36-31
 4-10 19.24-19 13x33
 20.39x17 12x21 21.32-28
 23x32 22.38x16 9-13
 23.42-38 10-14 24.47-42
 8-12 25.46-41 6-11
 26.42-37 14-19 27.40-35
 11-17 28.44-40 3-9
 29.38-33 9-14 30.48-42
 19-24 31.33-29 24x33
 32.34-30 25x34 33.40x38
 20-24 34.37-32 13-19
 35.41-37 19-23 36.43-39
 14-20 37.45-40 2-8
 38.31-26 24-30 39.35x24
 20x29 40.40-35 15-20

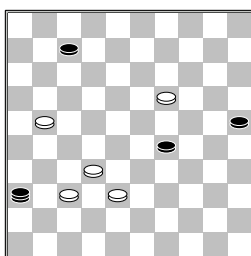


41.39-34?
 [Beter voor wit is
 >41.35-30 29-34
 42.30-25 34x43
 43.25x14 43-49
 44.32-27 49x41
 45.42-37 41x21
 46.16x27 23-29
 47.14-10 29-34 48.10-5
 34-40 49.5-19 7-11
 50.19x16 40-45
 51.26-21 17x26
 52.27-22 18x27=]
41...29x40 42.35x44

23-29 43.37-31 18-23
44.44-39 20-25 45.39-33
29-34 46.33-28 23-29
47.42-37 17-21 48.16x27
34-40 49.27-22 8-13



50.22-17
 [>50.26-21 40-45
 51.22-17 45-50
 52.17x19 50x36

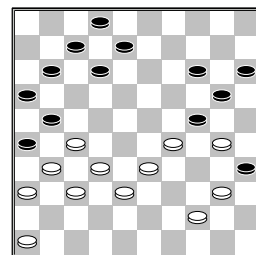


53.19-14
A) 53...36-22
 54.21-16 22-4
 55.37-31 4x36
 56.14-10 29-34
 57.10-5 36-47
 58.32-27 47x29
 59.27-22 34-39
 60.22-17 29-45
 61.17-11 7-12 62.5-14
 25-30 63.14-25 30-34
 64.11-6=
B) 53...36-47
 54.14-10 47x33
 55.10-5 25-30
 56.37-31 30-35
 57.32-27 29-34
 58.5-19 33-11
 59.21-16 11-6
 60.19-14 (60.19-32
 7-12 61.32-37 12-18
 62.37-42 34-39
 63.42-48 39-44
 64.16-11 6x28
 65.48-34 44-50
 66.34x7=) 60...7-12
 61.27-21 (61.14-3
 12-18 62.27-21 6-50
 63.3-20 50-28 64.20-9
 18-23 65.21-17 28x6
 66.9-14 6-28 67.16-11
 28x6 68.14x37=)
 61...6-33 62.14-37
 12-18 63.37-32 34-39
 64.32-49 18-23
 65.31-27 23-29
 66.27-22 33x26

67.16-11 26-12
 68.49-27 12-1
 69.27-31 29-34
 70.31-22 39-43
 71.22-39 43-48
 72.39x25 1-34
 73.25x39 48x34
 74.11-6 34-1 +]
50...12x21 51.26x17
40-44 52.28-22 44-49
53.31-27 49-35 54.17-11
7x16 55.22-17 35-44
56.17-12 44-33
0-2

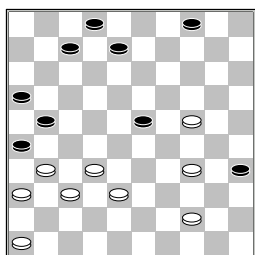
□ Lodder, P. (Piet)
 ■ Heikoop, A.J. (Arie)
 Nationale Clubcom 12-12-2015

1.33-28 17-21 2.31-27
 18-23 3.39-33 21-26
 4.36-31 11-17 5.41-36
 17-21 6.44-39 20-25
 7.49-44 6-11 8.34-29
 23x34 9.40x29 19-23
 10.29x18 12x23 11.28x19
 13x24 12.33-29 24x33
 13.39x28 9-13 14.38-33
 14-20 15.42-38 20-24
 16.47-42 15-20 17.44-40
 10-15 18.43-39 5-10
 19.40-34 7-12 20.34-29
 10-14 21.39-34 14-19
 22.45-40 24-30 23.35x24
 19x39 24.33x44 1-7
 25.40-34 13-19 26.38-33
 19-24 27.42-38 3-9
 28.48-43 24-30 29.43-39
 9-13 30.44-40 30-35
 31.50-44 20-24 32.29x20
 25x14 33.34-29 14-20
 34.39-34 4-10 35.28-23
 10-14 36.23-19 13x24
37.34-30



11-17
 [zwart mist hier een
 hele goede kans
 >37...14-19 38.30-25
 24-30 39.25x23 30-34
 40.27-22 34x45
 41.32-28 35-40
 42.44x35 45-50
 43.29-24 12-17
 44.33-29 7-12 45.38-33
 8-13 46.24-20 15x24
 47.29x20 50-44
 48.20-15 44-49

49.15-10 13-19
 50.23x14 49-27
 51.37-32
 27x27x32x33x10x22
 52.31x22 2-8 53.14-10
 26-31 54.36x27 21x23
 55.10-5 17x28 56.35-30
 8-13 57.30-24 12-17
 58.5-10 17-22 59.10-4
 13-18 60.24-20 28-33
 61.20-14 33-39
 62.14-10 39-44 63.10-5
 23-29 64.5-23 44-49=
]
 38.30x10 15x4 39.29-24
 20x29 40.33x24 17-22
 41.27x18 12x23 42.40-34

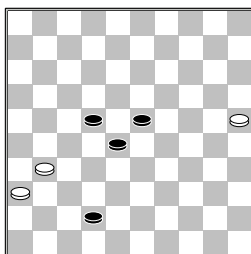


8-13
 [>42...7-12 43.34-30
 12-17 44.46-41 8-13
 45.30-25 17-22
 46.25-20 4-10 47.20-15
 10-14 48.24-20 14x25
 49.15-10 23-29 50.10-5
 29-34 51.38-33 22-28
 52.32x23 34-40=]
 43.38-33 7-11 44.31-27
 11-17 45.36-31 4-10
 46.33-28 35-40 47.28x8
 40x20 48.8-3 10-14
 49.27-22 17x28 50.32x23
 20-25 51.3x20 25x14
 52.23-18 2-8??
 [wit mist de remise via
 >52...14-19 53.44-39
 2-7 54.39-33 7-11
 55.33-28 11-17
 56.37-32 26x37
 57.32x41 21-27
 58.41-36 17-21
 59.18-12 19-23
 60.28x19 27-31
 61.36x27 21x32]
 53.44-39
 2-0

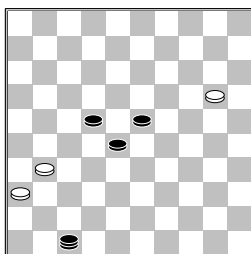
□ Dekker, W. (Wim)
 ■ Eenennaam, van, F.A. (F)
 Nationale Clubcom12-12-2015

1.35-30 20-25 2.40-35
 15-20 3.45-40 20-24
 4.33-29 24x33 5.38x29
 10-15 6.50-45 19-23
 7.39-33 14-19 8.44-39
 9-14 9.42-38 4-9
 10.30-24 19x30 11.35x24

14-19 12.40-35 19x30
 13.35x24 17-22 14.32-28
 23x32 15.37x17 11x22
 16.31-26 6-11 17.41-37
 11-17 18.37-31 7-11
 19.31-27 22x31 20.26x37
 17-22 21.38-32 5-10
 22.46-41 1-6 23.32-28
 2-7 24.28x17 11x22
 25.49-44 16-21 26.43-38
 21-26 27.37-32 6-11
 28.41-37 22-27 29.32x21
 26x17 30.37-32 18-22
 31.48-42 13-18 32.45-40
 8-13 33.32-28 9-14
 34.24-20 15x24 35.29x9
 3x14 36.28-23 18x29
 37.34x23 10-15 38.40-34
 13-19 39.42-37 19x28
 40.38-32 15-20 41.32x23
 20-24 42.44-40 11-16
 43.40-35 7-11 44.34-29
 14-20 45.39-34 16-21
 46.34-30 25x34 47.29x40
 20-25 48.40-34 12-18
 49.23x12 17x8 50.37-32
 11-16 51.47-42 21-27
 52.32x21 16x27 53.42-37
 8-12 54.37-31 27-32
 55.34-29 12-18 56.29x20
 25x14 57.35-30 18-23
 58.30-25 23-28 59.33-29
 32-38 60.29-24 38-42
 61.24-19 14x23



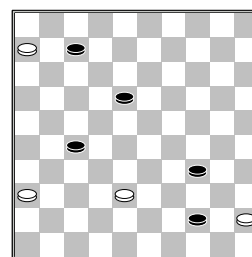
62.25-20??
 [Wit mist de remise via
 >62.31-27 22x31
 63.36x27=]
 62...42-47



63.20-15
 [63.20-14? 22-27
 64.31x33 47x9]
 63...47-20 64.15x24
 23-29 65.24x33 28x39
 66.31-27 22x31 67.36x27
 0-2

□ Bidesi, R.P. (Roy)
 ■ Lugthart, N. (Nico)
 Nationale Clubcom12-12-2015

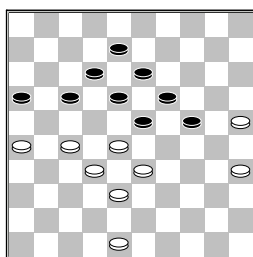
1.33-28 17-22 2.28x17
 11x22 3.39-33 6-11
 4.44-39 12-17 5.50-44
 7-12 6.31-27 22x31
 7.36x27 19-23 8.34-30
 1-6 9.30-25 20-24
 10.33-29 24x33 11.39x19
 14x23 12.44-39 10-14
 13.40-34 15-20 14.39-33
 14-19 15.25x14 9x20
 16.33-28 20-24 17.41-36
 4-9 18.43-39 9-14
 19.34-30 17-22 20.28x17
 11x31 21.36x27 6-11
 22.30-25 11-17 23.46-41
 14-20 24.25x14 19x10
 25.39-33 10-14 26.33-28
 14-19 27.38-33 17-22
 28.28x17 12x21 29.33-28
 5-10 30.42-38 10-15
 31.47-42 8-12 32.49-43
 15-20 33.41-36 20-25
 34.43-39 3-8 35.37-31
 24-30 36.35x24 19x30
 37.28x19 13x24 38.38-33
 18-23 39.32-28 21x32
 40.28x37 8-13 41.42-38
 13-19 42.37-32 12-17
 43.48-43 23-29 44.31-27
 17-21 45.27-22 19-23
 46.33-28 29-34 47.28x19
 24x13 48.32-27 21x32
 49.38x27 30-35 50.39x30
 25x34 51.22-17 35-40
 52.27-21 16x27 53.17-11
 40-44 54.11-6 13-18
 55.43-38 2-7



56.38-33
 [Wit mist de remise:
 >56.45-40 34x45 57.6-1
 7-12 58.1-6 45-50
 59.6-22 18-23 60.22x31
 23-29 61.31-26 12-18
 62.38-32 50-45
 63.26-42 29-34
 64.32-28 18-23
 65.28x19 44-49=]
 56...44-49 57.36-31
 27x36 58.33-28 49-35
 59.28-23 18x29 60.6-1
 0-2

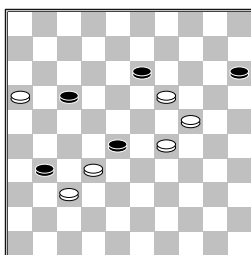
Olst, van, J. (Jan)
 Teijn, F. (Frans)
 Nationale Clubcom 12-12-2015

1.34-30 17-21 2.30-25
 21-26 3.40-34 11-17
 4.44-40 6-11 5.50-44
 17-21 6.34-29 11-17
 7.40-34 17-22 8.32-27
 21x32 9.37x17 12x21
 10.44-40 26x37 11.41x32
 7-12 12.46-41 2-7
 13.41-37 21-26 14.34-30
 19-24 15.30x19 14x34
 16.40x29 18-23 17.29x18
 12x23 18.25x14 10x19
 19.36-31 5-10 20.31-27
 10-14 21.45-40 14-20
 22.40-34 19-24 23.34-30
 13-19 24.33-28 8-13
 25.38-33 20-25 26.42-38
 25x34 27.39x30 7-12
 28.47-42 15-20 29.49-44
 13-18 30.44-39 20-25
 31.28-22 25x34 32.22x13
 9x18 33.39x30 4-9
 34.33-28 9-13 35.43-39
 1-7 36.39-33 7-11
 37.37-31 26x37 38.42x31
 11-17 39.31-26 3-8
 40.30-25



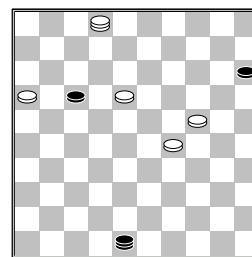
23-29??
 [In de database bevinden zich de volgende varianten naar remise voor zwart >40...17-21
 41.26x17 12x21
 42.28-22 (42.48-42;
 42.48-43)
 A) 42...23-29
 43.25-20 24x15
 44.33x24 19x30
 45.35x24 18-23
 46.48-43 8-12
 47.22-17 23-28
 48.17x19 28x37
 49.19-14 21x32
 50.38x27 37-41
 51.14-9 41-46 52.9-4
 46-14 53.27-22 14-25
 54.43-38
 B) 42...8-12 43.22-17
 21-26 44.17x8 13x2
 45.48-43 (45.33-28
 2-7 46.28-22 7-12
 47.22x13 19x8

48.48-43 12-18
 49.43-39 8-12
 50.39-33 12-17
 51.33-28 17-22
 52.28x30 22x31
 53.25-20 31-36
 54.20-14 26-31
 55.14-10=) 45...2-7
 46.43-39
 B1) 46...7-12
 47.39-34 16-21
 48.27x16 26-31
 49.16-11 31-36
 50.11-6 36-41 51.6-1
 41-47 52.32-27 12-17
 53.34-29 23x34
 54.1x45 47-41
 55.33-28 41x23 +
 B2) 46...16-21
 47.27x16 26-31
 48.32-27 31x22
 49.38-32 23-29
 50.16-11 29x27
 51.11x2 27-32
 52.39-33 24-30
 53.35x13 18x9
 54.2-24 9-13 55.24x2
 22-28 (55...32-37
 56.2-13 22-28
 57.33x22 37-42)
 56.33x22 32-37]
 41.25-20 24x15 42.33x24
 19x30 43.35x24 17-21
 44.26x17 12x21 45.38-33
 8-12 46.48-42 21-26
 47.42-37 12-17 48.33-29
 16-21 49.27x16 18-22
 50.28-23 22-28 51.23-19
 26-31

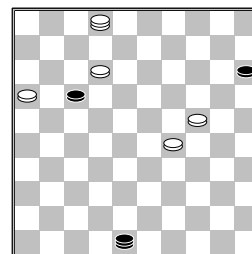


52.19x8
 [In de database van TDAM komt de volgende variant voor >52.37x26
 28x37 53.19x8 37-42
 54.8-3 17-22 55.3-9
 42-48 56.9x27 48-25
 57.27-22 25-14
 58.22-44 14-25
 59.16-11 25-43 60.11-6
 43-16 61.6-1 +]
 52...31x42 53.32x23
 42-48 54.8-2 48-37
 55.23-18 37-48

(diagram)



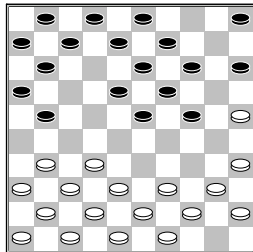
56.18-12



[wit mist een winst variant >56.18-13
 48-25 57.2-8 17-22
 58.8-3 22-27 59.13-9
 27-32 60.9-4 25-39]
 [deze stand komt voor in de database van TDAM en het ging toe verder met
 56.24-19 48-37
 57.19-13 37-31
 58.16-11 17x6 59.2-16
 31-37 60.18-12 15-20
 61.16-2 37-14 62.12-7
 14-3 63.29-23 6-11
 64.7x16 3-12 65.23-19
 20-24 66.19x30 12-8=
]
56...17x8 57.2x19
 [>57.2x13 48-26
 58.13-18 26-8?
 (58...26-17 59.29-23
 17-26 60.18-9 26-8
 61.23-19 8-17 62.9-13
 17-33 63.13-36 33x20=)
 59.18-7 8x35 60.29-24
 35x11 61.16x7 +]
57...48-26 58.19-23
 26-42 59.23-14 42-26
 60.29-23 26-8 61.23-19
 8-17 62.19-13 17-44
 63.14-25 44-35 64.24-19
 35-44 65.25-14 44-17
 66.14-5 15-20 67.5-10
 17-26 68.10-15 20-25
 69.19-14 25-30 70.15-29
 26-37 71.14-9 30-35
 72.9-4 37-28 73.13-8
 28-6 74.29-45 6-28
 75.8-3 28-19 76.16-11
 19-32 77.11-7 32-37
 78.7-2 37-32 79.4-15
 32-28
 2-0

Dee, van, H. (Hein)
 Kist, H.J. (Harm)
 Nationale Clubcom 12-12-2015

1.34-29 19-23 2.40-34
 14-19 3.45-40 10-14
 4.50-45 4-10 5.33-28
 20-24 6.29x20 15x24
 7.34-30 10-15 8.30-25
 17-22 9.28x17 12x21

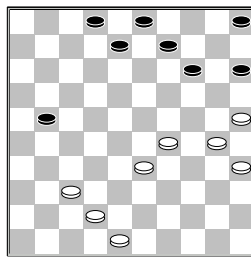


10.32-28
 [in de database kom de volgende variant voor
 10.31-26 7-12 11.26x17
 12x21 12.36-31 1-7
 13.31-27 7-12 14.39-33
 14-20 15.25x14 9x20
 16.44-39 21-26
 17.49-44 5-10 18.33-28
 10-14 19.39-33 11-17
 20.44-39 17-22
 21.28x17 12x21
 22.33-28 24-29
 23.41-36 6-11 24.39-34
 3-9 25.37-31 26x37
 26.32x41 21x32
 27.38x27 23x21 28.34x3
]

10...23x32 11.37x28
 7-12 12.39-33 18-23
 13.42-37 23x32 14.37x28
 21-26 15.44-39 26x37
 16.41x32 1-7 17.40-34
 24-30 18.35x24 19x30
 19.46-41 30-35 20.41-37
 16-21 21.45-40 35x44
 22.49x40 11-16 23.40-35
 6-11 24.34-29 11-17
 25.36-31 21-26 26.31-27
 17-22 27.27x18 12x34
 28.39x30 16-21 29.47-42
 21-27 30.32x21 26x17
 31.33-29 7-12 32.38-33
 12-18 33.43-38 17-22
 34.28x17 18-23 35.29x18
 13x11 36.33-29 11-17
 37.38-33 17-21

(diagram)

38.37-32
 [38.33-28 21-27
 39.42-38 14-20
 40.25x14 9x20 41.30-24
 20-25 42.28-23 5-10
 43.48-42 10-14

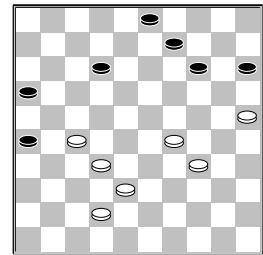


44.38-33 14-20
 45.42-38 8-13 46.23-19
 25-30 47.19x8 30x19
 48.37-32 3x12 49.32x21
 19-24 50.38-32 20-25
 51.29x20 15x24
 52.32-28 2-7 53.28-22
 25-30 54.33-28 30-34
 55.22-17 34-39 56.17x8
 39-44 57.8-2 44-50]
38...8-12 39.42-37 2-8
40.37-31 21-26 41.31-27
 8-13 42.33-28 12-17
 43.48-42 3-8 44.29-23
 8-12 45.27-22 17-21
 46.30-24 12-17 47.22x11
 21-27 48.32x21 26x6
 49.42-37 6-11 50.37-32
 13-18 51.23x12 9-13
 52.35-30 14-19 53.12-8
 13x2 54.24x13 5-10
 55.30-24 11-17 56.13-9
 10-14 57.9x20 2-8
 58.32-27 8-13 59.20-14
 13-18 60.14-10 15x4
 61.28-23 18x20 62.25x14
 2-0

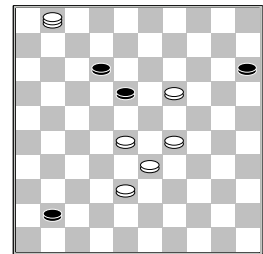
Kamminga, H. (Henk)
 Vroom, H.H.J. (Herman)
 Nationale Clubcom 12-12-2015

1.32-28 18-22 2.31-27
 22x31 3.36x27 19-23
 4.28x19 14x23 5.37-32
 10-14 6.41-37 5-10
 7.46-41 12-18 8.34-30
 14-19 9.30-25 10-14
 10.40-34 7-12 11.45-40
 1-7 12.50-45 17-22
 13.41-36 22x31 14.36x27
 11-17 15.34-29 23x34
 16.39x30 17-22 17.30-24
 22x31 18.37x26 19x30
 19.25x34 16-21 20.26x17
 12x21 21.44-39 21-26
 22.42-37 7-11 23.34-30
 18-22 24.49-44 11-17
 25.48-42 6-11 26.33-28
 22x33 27.39x28 17-21
 28.43-39 11-16 29.39-34
 8-12 30.30-25 13-18
 31.35-30 21-27 32.32x21
 26x17 33.28-23 18x29
 34.34x23 16-21 35.44-39
 12-18 36.23x12 17x8
 37.39-33 4-10 38.37-32
 8-12 39.47-41 20-24

40.30x19 14x23 41.33-29
 23x34 42.40x29 10-14
 43.45-40 2-7 44.40-34
 7-11 45.41-37 11-16
 46.37-31 21-26 47.31-27



12-18
 [beter voor zwart is
 >47...14-19 48.34-30
 9-13 49.32-28 12-17
 50.42-37 3-8 51.29-24
 8-12 52.38-33 12-18
 53.33-29 18-23 54.29x9
 17-21 55.24x13 21x41
 56.28-22 26-31 57.9-4
]
48.32-28 14-19 49.38-33
 9-13 50.34-30 3-8
 51.30-24 19x30 52.25x34
 13-19 53.34-30 8-12
 54.42-38 16-21 55.27x16
 26-31 56.16-11 31-36
 57.11-6 36-41 58.6-1
 19-24 59.30x19

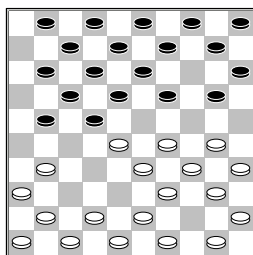


12-17
 [>59...41-46 60.28-22
 18x27 61.1x31 46x10
 62.29-24 10-4 63.31-36
 4-10 64.36-18 10-4
 65.18-40 4-22 66.33-29
 22-39 67.29-23 39-25
 68.38-33 25-20
 69.33-29 20-3 70.23-18
 3-26 71.40-49 26-37
 72.18-12 37-14 73.12-7
 14-3 74.7-1]
60.1x23 41-46 61.29-24
 2-0

Yigitturk, B. (Berke)
 Gelder, van, T.J. (Teun)
 Nationale Clubcom 12-12-2015

1.33-29 19-23 2.35-30
 14-19 3.40-35 17-22
 4.44-40 11-17 5.38-33
 6-11 6.32-28 23x32

7.37x28 16-21



8.41-37

[Variant 1 vanuit deze stand in de databaes

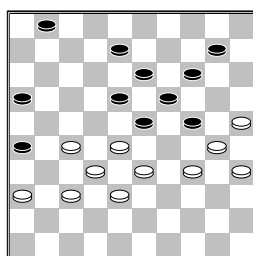
8.42-38 20-25 9.30-24
 19x30 10.35x24 11-16
 11.38-32 21-27
 12.32x21 17x37
 13.41x32 10-14
 14.28x17 12x21
 15.32-28 21-26
 16.46-41 16-21
 17.41-37 18-22
 18.28x17 21x12
 19.37-32 14-19
 20.40-35 19x30
 21.35x24 5-10 22.50-44
 13-19 23.24x13 8x19
 24.47-42 15-20
 25.42-37 20-24
 26.29x20 25x14]

[Variant 2 vanuit deze stand in de database

8.43-38 20-24 9.29x20
 15x24 10.31-26 1-6
 11.50-44 21-27
 12.48-43 9-14 13.30-25
 4-9 14.34-30 10-15
 15.40-34 18-23
 16.42-37 23x32
 17.37x28 13-18
 18.44-40 18-23
 19.34-29 23x32
 20.29x20 15x24
 21.40-34 12-18
 22.34-29 7-12 23.29x20
 9-13 24.20x9 3x14
 25.45-40 19-23
 26.40-34 13-19
 27.30-24 19x30
 28.35x24 8-13 29.24-20
 2-8 30.20x9 13x4
 31.33-29 8-13 32.38-33
 13-19 33.47-42 11-16
 34.41-37 32x41
 35.36x47 6-11 36.46-41
 16-21 37.25-20 11-16
 38.20-15 5-10 39.49-44
 27-32 40.44-40 21-27
 41.42-38 10-14
 42.40-35 16-21
 43.35-30 23-28
 44.30-24 19x30
 45.34x25 4-9 46.47-42
 9-13]

8...21-27 9.37-32 27x38

10.43x32 22-27 11.31x22
 18x38 12.48-43 13-18
 13.43x32 18-23 14.29x18
 12x23 15.30-25 10-14
 16.49-43 7-12 17.34-29
 23x34 18.40x29 12-18
 19.46-41 20-24 20.29x20
 15x24 21.41-37 18-23
 22.42-38 9-13 23.45-40
 8-12 24.47-42 17-21
 25.37-31 12-18 26.31-27
 11-16 27.40-34 2-8
 28.34-30 8-12 29.50-44
 21-26 30.39-34 3-8
 31.34-29 23x34 32.30x39
 18-23 33.44-40 13-18
 34.42-37 4-9 35.40-34
 5-10 36.34-29 23x34
 37.39x30 18-23 38.43-39
 9-13 39.39-34 12-18



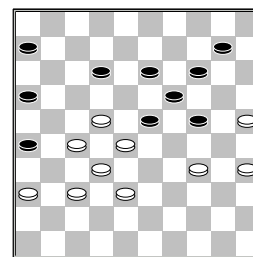
40.28-22

[>40.34-29 23x34
 41.30x39 18-23
 42.36-31 1-7 43.28-22
 10-15 44.33-28 23-29
 45.38-33 29x38
 46.32x43 7-12 47.37-32
 26x37 48.32x41 12-18
 49.22-17 8-12 50.17x8
 13x2 51.41-37 2-7
 52.43-38 24-29
 53.37-32 15-20
 54.35-30 29-34
 55.28-22 (55.39-33
 34-40 56.30-24 20x29
 57.33x22 40-44
 58.22-17=) 55...34x43
 56.22x15 43-48
 57.30-24=]
40...8-12 41.34-29
23x34 42.30x39 18-23
 [goede kans voor zwart
 is >42...19-23
 43.33-28 14-19
 44.27-21 26x17
 45.22x11 16x7 46.36-31
 1-6 47.31-27 7-11
 48.37-31 10-14
 49.39-33]
43.33-28 1-6 44.39-34

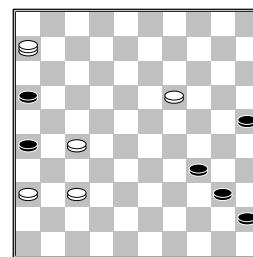
(diagram)

12-17

[goede kans voor zwart
 is >44...10-15



45.22-17 12x21
 46.36-31 6-11 47.38-33
 13-18 48.28-22 11-17
 49.22x11 16x7 50.27x16
 18-22 51.34-30 23-28
 52.32x23 19x39
 53.30x10 15x4]
45.22x11 6x17 46.35-30
24x35 47.34-29 23x34
48.25-20 14x25 49.28-22
17x28 50.32x5 35-40
51.5-28 40-45 52.28-50
13-19 53.38-33 19-24
54.33-28 24-30 55.28-23
30-35 56.23-19 35-40
57.50-6



45-50?

[Remise is
 >57...16-21 58.27x16
 45-50 59.16-11 40-44
 60.6-1 44-49 61.1x45
 50x6 62.19-14 6-28
 63.14-9 28x46 64.9-4
 49-16 65.45-1]
58.27-22 50x11 59.6x35
34-39 60.19-14 39-43
61.35-49 26-31 62.37x26
43-48 63.14-10 48-39
64.10-5 25-30 65.49-27
39-6 66.5-23 6-1
67.23-45 1-6 68.27-49
30-35 69.49-27 6-28
70.26-21 28-46 71.21-17
46-5 72.17-12 5-46
73.12-8 46-5 74.8-3
5-28 75.36-31
2-0