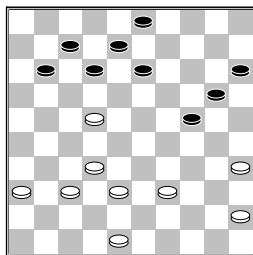


Chandarsing, R. (Radji)
 Broekzitter, M. (Rien)
 NC2D 10-01-2015

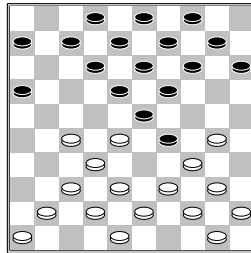
1.33-28 17-21 2.31-26
 20-25 3.26x17 11x33
 4.39x28 16-21 5.44-39
 21-26 6.49-44 14-20
 7.39-33 10-14 8.44-39
 5-10 9.37-31 26x37
 10.42x31 12-17 11.47-42
 7-12 12.41-37 6-11
 13.31-27 1-6 14.36-31
 20-24 15.34-30 25x34
 16.40x20 15x24 17.45-40
 2-7 18.40-34 10-15
 19.46-41 17-22 20.28x17
 11x22 21.50-45 22-28
 22.33x22 24-29 23.34x23
 19x17 24.39-34 6-11
 25.41-36 13-19 26.43-39
 9-13 27.34-30 4-9
 28.38-33 14-20 29.42-38
 19-24 30.30x19 13x24
 31.27-22 18x27 32.31x22
 17x28 33.33x22 9-13



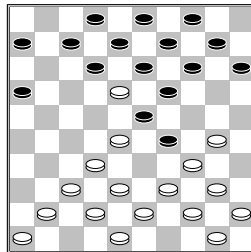
34.32-28? 13-18 35.22x2
 20-25 36.2x30 25x23
 37.35-30 11-17 38.45-40
 3-9 39.40-34 12-18
 40.36-31 7-12 41.48-43
 17-22 42.43-38 9-13
 43.31-26 15-20 44.37-31
 20-25 45.34-29
 [door >45.30-24 had
 wit de zwart speler nog
 even achter het bord
 kunnen houden 23-29
 46.34x23 18x20
 47.26-21 25-30
 48.21-16 12-17
 49.38-33 30-34
 50.31-26 20-24
 51.26-21 17x26
 52.16-11 34-40 53.11-7
 40-44]
 45...25x34 46.29x40
 22-27 47.31x22 18x27
 48.38-33 13-19 49.40-34
 12-18 50.34-29 23x34
 51.33-28 27-31 52.26x37
 34-39
 0-2 (0.45/0.18)

Kanters, W.J. (Wim)
 Lachman, R. (Rajesh)
 NC2D 10-01-2015

1.33-28 18-23 2.31-27
 20-24 3.36-31 15-20
 4.41-36 10-15 5.47-41
 17-21 6.39-33 12-18
 7.44-39 7-12 8.49-44
 1-7 9.31-26 5-10
 10.26x17 11x31 11.36x27
 24-29 12.33x24 20x29
 13.35-30

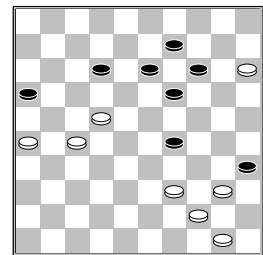


18-22
 [>13...29-33 14.38x29
 19-24 15.28x19 24x33
 16.39x28 13x35
 17.28-23 18x29
 18.34x23 15-20
 19.40-34 20-24
 20.34-29 24x33
 21.44-40 35x44
 22.50x28 8-13 23.42-38
 en zwart staat beter]
 14.27x18?



[wit wint schijf na
 >14.28x17 12x21
 15.39-33 7-12 16.33x24
 12-18 17.38-33 6-11
]
 14...13x33 15.39x28
 7-11 16.43-39 16-21
 [>16...9-13 17.48-43
 15-20 18.30-24 19x30
 19.34x25 16-21
 20.28x19 13x24
 21.39-33 11-16
 22.44-39 8-13 23.32-28
 10-15 24.41-36 2-8]
 17.48-43 21-27 18.32x21
 23x32 19.34x23 19x28
 20.38x27 11-16 21.42-38
 15-20 22.30-25 2-7
 23.38-33 7-11 24.33x22

11-17 25.22x11 6x26
 26.43-38 20-24 27.37-31
 26x37 28.41x32 12-17
 29.38-33 9-13 30.32-28
 8-12 31.40-34 3-9
 32.46-41 13-18 33.41-37
 9-13 34.28-22 17x28
 35.33x22 18-23 36.45-40
 14-19 37.34-30 24x35
 38.25-20 4-9 39.20-15
 10-14 40.37-31 23-29
 41.31-26

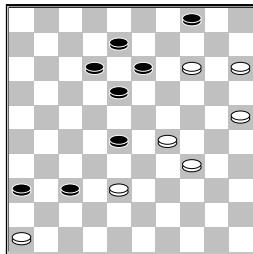


19-23??
 [>41...12-18 42.26-21
 18-23 43.22-17 29-33
 44.39x28 23x32
 45.27x38 16x27
 46.38-33 27-31
 47.17-11 31-36 48.11-7
 14-20 49.15x24 19x30
]
 [41...12-17 42.22x11
 16x7 43.27-22 19-23
 44.26-21 13-19
 45.21-16 29-33
 46.39x28 23x32
 47.22-17 32-37
 48.17-11 19-24 49.11x2
 37-42 50.2x30 35x24
 51.16-11 24-29 52.11-7
 42-47 53.7-1 29-34
 54.40x29 47x24 55.1-34
 24-35 56.44-39 9-13
 (56...14-20?? 57.15x24
 35x2 58.34-7 2x44
 59.50x39 9-13 60.39-33
 13-18 61.33-28)
 57.34-25 35-44=]
 42.40-34 29x49 43.50-45
 49x21 44.26x10
 2-0 (0.34/0.17)

Vroom, H.H.J. (Herman)
 Groenendijk, R. (Ruben)
 NC2D 10-01-2015

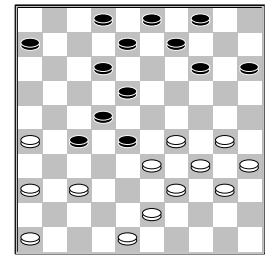
1.33-29 19-23 2.35-30
 14-19 3.40-35 17-22
 4.31-27 22x31 5.36x27
 20-24 6.29x20 15x24
 7.39-33 12-17 8.45-40
 7-12 9.43-39 1-7
 10.50-45 10-14 11.33-29
 24x33 12.38x29 23-28
 13.32x23 19x28 14.29-24
 17-21 15.37-32 28x37
 16.41x32 11-17 17.47-41

6-11 18.49-43 21-26
 19.43-38 17-22 20.41-36
 22x31 21.36x27 11-17
 22.27-21 16x27 23.32x21
 26-31 24.21-16 31-36
 25.30-25 18-22 26.35-30
 14-19 27.39-33 13-18
 28.24x13 8x19 29.34-29
 19-23 30.30-24 23x34
 31.40x29 9-13 32.44-39
 7-11 33.16x7 2x11
 34.45-40 11-16 35.40-34
 16-21 36.34-30 21-26
 37.24-20 17-21 38.30-24
 21-27 39.20-15 27-32
 40.38x27 22x31 41.33-28
 31-37 42.42x31 26x37
 43.39-34 5-10 44.48-43
 10-14 45.43-38 14-19
 46.24-20 3-8 47.28-23
 19x28 48.20-14



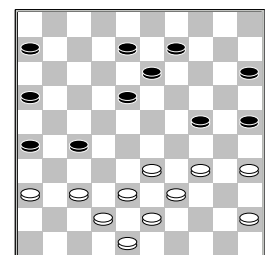
37-42?
 [48...28-33 49.29-24
 33x42 50.14-9 36-41
 51.9-3 41-47 52.3-20
 18-22 53.24-19 13x24
 54.20x1 8-13 55.25-20
 13-18 56.1x41 47x36
 57.20-14 42-48
 58.14-10 48x25 59.10-5
 25-48 60.46-41 36x47
 61.5-14 48-25 62.14-46
 47-24 63.46-32 24-35
 64.32-46 25-3 65.46-5
 35-8 66.5-32]
 [48...36-41 49.14-9?
 (49.14-10 13-19
 50.25-20 19-23
 51.38-32 12-17
 52.34-30 23x5 53.32x3
 17-22 54.3-26 41-47
 55.26x48 47-38
 56.48-39 22-27
 57.39-25 27-31
 58.25-20 38-32
 59.20-42 31-36
 60.42-24=) 49...18-23
 50.9x7 41-47 51.29x18
 47x1]
 49.38x47 28-33 50.29x38
 13-19 51.14x23 18x40
 52.25-20 40-44 53.20-14
 44-49 54.38-32 49x16
 55.14-10 12-18 56.10-5
 18-22 57.5-37 22-27
 58.37-5 27-31 59.5-14

16-21 60.14-19
 1-1 (0.42/0.01)
 IJsselstein, W.A. (Wim)
 Snellaars, M.A.J. (Rin)
 NC2D 10-01-2015
 1.32-28 19-23 2.28x19
 14x23 3.37-32 10-14
 4.41-37 14-19 5.33-28
 9-14 6.39-33 17-22
 7.28x17 11x22 8.31-27
 22x31 9.36x27 4-9
 10.46-41 6-11 11.44-39
 11-17 12.33-28 17-22
 13.28x17 12x21 14.39-33
 8-12 15.33-28 2-8
 16.34-30 21-26 17.41-36
 1-6 18.50-44 20-24
 19.44-39 15-20 20.39-33
 5-10 21.49-44 23-29
 22.30-25 10-15 23.44-39
 18-23 24.39-34 7-11
 25.34-30 12-18 26.37-31
 26x37 27.42x31 8-12
 28.27-22 18x27 29.31x22
 11-17 30.22x11 16x7
 31.28-22 12-18 32.47-42
 18x27 33.32x21 13-18
 34.33-28 23x32 35.38x27
 9-13 36.42-37 29-33
 37.43-39 33x44 38.40x49
 3-9 39.37-32 18-23
 40.32-28 23x32 41.27x38
 13-18 42.38-32 18-23
 43.36-31 23-29 44.32-28
 9-13 45.21-17 7-12
 46.17x8 13x2 47.31-27
 2-8 48.27-22 8-12
 49.49-43 29-34 50.30x39
 24-29 51.39-34 29x40
 52.45x34 20-24 53.43-38
 12-17 54.22x11 6x17
 55.48-42
 2-0 (0.28/0.38)
 Schreurs, M.J. (Jan)
 Visser, M.D. (Rien)
 NC2D 10-01-2015
 1.32-28 18-23 2.38-32
 12-18 3.42-38 7-12
 4.34-29 23x34 5.39x30
 20-25 6.44-39 25x34
 7.39x30 17-21 8.31-26
 11-17 9.47-42 1-7
 10.50-44 15-20 11.43-39
 20-25 12.49-43 25x34
 13.39x30 10-15 14.44-39
 5-10 15.37-31 7-11
 16.40-34 19-23 17.28x19
 14x23 18.45-40 10-14
 19.41-37 21-27 20.32x21
 16x27 21.31x22 18x27
 22.33-29 13-18 23.37-32
 11-16 24.32x21 16x27
 25.42-37 23-28 26.38-33
 17-22



27.43-38??
 [>27.37-31 14-20
 28.26-21 27x16
 29.31-27 22x31
 30.33x13 9x18 31.36x27
 20-25 32.48-42 2-7
 33.39-33 4-9]
 27...27-31 28.36x27
 22x42 29.33x13 42x44
 30.40x49 8x19 31.26-21
 14-20 32.30-25 19-24
 33.25x14 9x20 34.49-43
 24x33 35.43-38 33x42
 36.48x37 20-24
 0-2 (0.30/0.50)

Bruijn, de, A. (Aart)
 Vaal-Kokshoorn, de, H.
 NC2D 10-01-2015
 1.32-28 19-23 2.28x19
 14x23 3.37-32 10-14
 4.41-37 14-19 5.33-28
 17-22 6.28x17 12x21
 7.39-33 5-10 8.44-39
 10-14 9.50-44 7-12
 10.34-30 20-24 11.30-25
 14-20 12.25x14 9x20
 13.31-27 1-7 14.33-28
 4-9 15.39-33 21-26
 16.44-39 11-17 17.39-34
 17-22 18.28x17 12x21
 19.33-28 18-22 20.27x29
 24x22 21.38-33 19-24
 22.32-28 7-11 23.28x17
 11x22 24.42-38 13-18
 25.47-42 9-13 26.34-30
 20-25 27.30x19 13x24
 28.49-44 8-13 29.44-39
 22-27 30.37-32 2-8
 31.40-34 18-22 32.32-28
 3-9 33.28x17 21x12
 34.46-41 12-18 35.41-37

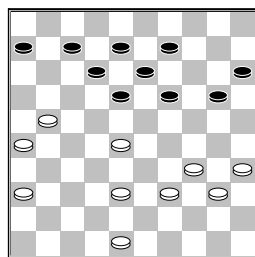


6-11?
 [>35...18-22 36.34-30
 25x34 37.39x19 13x24
 38.45-40 15-20

39.33-28 22x33
 40.38x29 24x33
 41.43-38 9-14 42.38x29
 26-31 43.37x26 14-19
 44.42-38 6-11 45.26-21
 19-24 46.21x32 24x42
 47.48x37]
36.34-30 25x34 37.39x19
13x24
 2-0 (0.53/1.40)

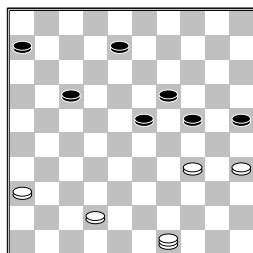
☐ **Kruyshoop,A. (Alex)**
 ■ **Dussen,van der,J. (Ja**
 NC2D 10-01-2015

1.32-28 20-25 2.37-32
 15-20 3.41-37 10-15
 4.31-27 17-22 5.28x17
 11x31 6.36x27 6-11
 7.46-41 11-17 8.41-36
 17-21 9.33-28 21-26
 10.37-31 26x37 11.42x31
 18-22 12.28x17 12x21
 13.47-42 13-18 14.39-33
 9-13 15.44-39 4-9
 16.33-28 21-26 17.39-33
 26x37 18.32x41 18-23
 19.38-32 23-29 20.33x24
 19x39 21.43x34 8-12
 22.41-37 2-8 23.37-31
 14-19 24.31-26 19-24
 25.42-38 5-10 26.49-43
 1-6 27.27-21 16x27
 28.32x21 24-29 29.34x23
 25-30 30.35x24 20x18
 31.40-35 9-14 32.50-44
 14-19 33.44-40 10-14
 34.43-39 14-20 35.40-34
 3-9 36.45-40



20-25?
 [beter is voor zwart
 >36...18-23 37.38-32
 20-24 38.34-30 6-11
 39.36-31 13-18
 40.40-34 11-17
 41.31-27]
37.28-22 18x16 38.26-21
16x27 39.38-32 27x38
40.39-33 38x29 41.34x3
15-20 42.48-42
 [>42.40-34 20-24
 43.3-14 12-18 44.14-10
 18-22 45.10-23 22-27
 46.23x1 27-32 47.1-23
 32-38 48.34-30 25x34
 49.23x40 13-19
 50.40-49]

42...7-11 43.40-34
 20-24 44.3-14 11-17
 45.14-32 12-18 46.32-43
 18-23 47.43-49 13-19



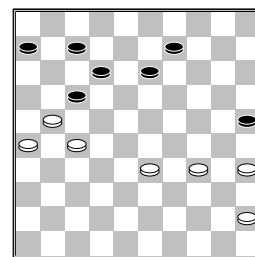
48.49-40?
 [Beter voor wit is
 >48.49-38 23-28
 49.38x15 19-23
 50.15-38 17-22
 51.38-43 8-12 52.42-38
 22-27 53.34-30 25x34
 54.43x25]
48...8-13 49.40-45
24-30 50.35x24 19x39
 1-1 (0.41/0.34)

☐ **Oomen,A. (Antoine)**
 ■ **Pauwels,J. (Jeremy)**
 NC2D 10-01-2015

1.31-26 19-23 2.34-29
 23x34 3.39x30 14-19
 4.44-39 19-23 5.49-44
 10-14 6.32-28 23x32
 7.37x28 4-10 8.42-37
 18-23 9.28x19 14x23
 10.47-42 12-18 11.39-34
 7-12 12.37-31 1-7
 13.44-39 20-25 14.50-44
 10-14 15.41-37 14-19
 16.46-41 5-10 17.37-32
 10-14 18.42-37 14-20
 19.48-42 9-14 20.33-29
 3-9 21.39-33 17-22
 22.44-39 20-24 23.29x20
 15x24 24.32-27 11-17
 25.34-29 23x34 26.40x20
 25x34 27.39x30 14x34
 28.33-28 22x33 29.38x40
 7-11 30.42-38 19-23
 31.37-32 17-22 32.41-37
 2-7 33.43-39 11-17
 34.27-21 16x27 35.32x21
 13-19 36.37-32 8-13
 37.31-27 22x31 38.36x27
 19-24 39.38-33 24-29
 40.33x24 23-28 41.32x23
 18x20 42.40-34 20-25
 43.39-33

(diagram)

7-11?
 [houd zijn stand gelijk
 door >43...17-22
 44.27x18 13x22
 45.34-29 12-18



46.21-16 9-13 47.26-21
 13-19 48.45-40 19-23
 49.40-34 7-12 50.29-24
 6-11 51.16x7 12x1
 52.33-29 1-7 53.21-16
 22-27 54.24-19 23x14
 55.29-24 27-32
 56.24-20 14-19
 57.20-15 32-38
 58.15-10 38-42 59.10-4
 18-23 60.4-27 23-28
 61.27-43 19-23
 62.43-39 28-32
 63.39-28 32-38
 64.28x14]

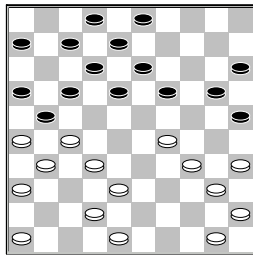
44.34-29 11-16 45.45-40
13-18 46.33-28 9-14
47.29-24 6-11 48.40-34
18-22 49.27x7 16x27
50.7x16 17-22 51.28x17
27-32 52.24-20 14-19
53.20-15 32-37 54.15-10
37-41 55.10-4 41-46
56.4-15 19-23 57.15-33
46-41 58.33-50 41-46
59.16-11 46-41 60.50-45
 2-0 (0.45/0.59)

☐ **Vaal,de,R. (Ron)**
 ■ **Kruijff,de,L. (Luc)**
 NC2D 10-01-2015

1.32-28 18-23 2.38-32
 12-18 3.43-38 7-12
 4.49-43 1-7 5.34-29
23x34 6.39x30 20-24
7.44-39 14-20? 8.28-22
17x28 9.32x25 9-14
10.30x19 14x23 11.40-34
15-20 12.25x14 10x19
13.37-32 5-10 14.41-37
10-14 15.34-30 11-17
16.50-44 7-11 17.33-28
17-22 18.28x17 11x22
19.31-27 22x31 20.36x27
4-10 21.44-40 10-15
22.39-33 15-20 23.33-28
20-24 24.43-39 2-7
25.30-25 7-11 26.27-22
18x27 27.32x21 23x34
28.40x7 11x2 29.25-20
16x27 30.20-15
 2-0 (0.58/1.21)

☐ **Korteland,R. (Remco)**
 ■ **Stroom,van der,M. (Mi**
 NC2D 10-01-2015

1.33-28 18-23 2.34-30
 12-18 3.30-25 20-24
 4.39-33 14-20 5.25x14
 9x20 6.44-39 4-9
 7.39-34 24-29 8.33x24
 19x39 9.28x19 13x24
 10.43x34 7-12 11.49-43
 1-7 12.43-39 20-25
 13.39-33 15-20 14.33-29
 24x33 15.38x29 10-15
 16.42-38 16-21 17.31-26
 9-13 18.37-31 11-16
 19.31-27 5-10 20.47-42
 10-14 21.41-37 14-19
 22.37-31



19-23? 23.27-22 17x37
 24.26x17 37x26 25.38-33
 12x21 26.33-28 23x32
 27.29-24 20x29 28.34x1
 13-19 29.35-30? 25x34
 30.40x29 19-23 31.29x18
 2-7 32.1x12 8x17
 33.46-41 15-20 34.45-40
 20-24 35.40-34 6-11
 36.18-13 3-9 37.13x4
 21-27 38.4x31 26x46
 39.48-43 17-21 40.36-31
 24-29 41.34x23 32-38
 42.42x33 46x10 43.43-39
 21-26 44.31-27 11-17
 45.33-29 17-21 46.29-24
 21x32 47.24-20 32-37
 48.39-33 37-41 49.33-29
 41-46
 0-2 (0.26/1.14)