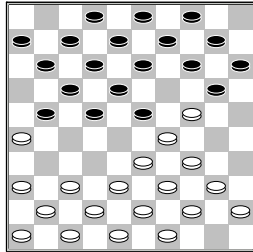


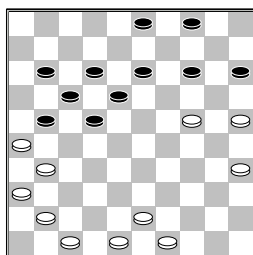
Vroom, H.H.J. (Herman)
 Roedolph, J. (Joop)
 NC 2e klasse D 07-02-2015

1.33-29 17-22 2.39-33
 11-17 3.44-39 6-11
 4.50-44 1-6 5.31-26
 16-21 6.32-28 19-23
 7.28x19 14x23 8.35-30
 10-14 9.30-24 5-10



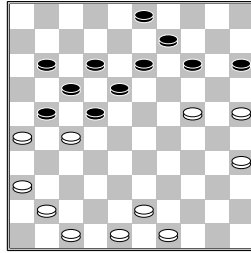
10.40-35?
 [>10.33-28 22x33
 11.39x19 14x23
 12.38-32 9-14 13.43-39
]

10...22-28 11.33x22
 18x27 12.29x18 20x40
 13.45x34 13x22 14.37-31
 8-13 15.38-33 2-8
 16.42-38 14-19 17.35-30
 19-23 18.44-40 23-28
 19.40-35 10-14 20.41-37
 13-19 21.30-25 8-13
 22.34-30 19-23 23.37-32
 28x37 24.31x42 12-18
 25.39-34 7-12 26.34-29
 23x34 27.30x39 11-16
 28.39-34 13-19 29.34-30
 19-23 30.33-29 23x34
 31.30x39 9-13 32.39-33
 6-11 33.33-29 27-32
 34.38x27 21x32 35.46-41
 16-21 36.29-24 32-37
 37.42x31



4-9?
 [een stuk beter is
 >37...21-27 38.41-37
 18-23 39.47-42 11-16
 40.42-38 4-9 41.43-39
 23-28 42.37-32 28x37
 43.31x42 12-18
 44.48-43 22-28
 45.38-33 17-22
 46.33-29 16-21
 47.26x17 22x11]

38.31-27



22x31
 [38...21x32? 39.25-20
 14x25 40.26-21 17x26
 41.35-30 25x34
 42.24-20 15x24
 43.43-38 32x43 44.48x6
]

39.36x7 12x1 40.47-42
 14-20 41.25x14 9x29
 42.43-39 3-9 43.42-38
 9-14 44.41-37 18-23
 45.37-31 15-20 46.31-27
 20-24 47.39-33 24-30
 48.33x24 30x19 49.38-33
 19-24 50.48-43 13-18
 51.43-38 17-22 52.38-32
 22x31 53.26x37 18-22
 54.37-31 1-7 55.49-43
 23-29 56.35-30 29x36
 57.30x10
 1-1 (0.45/0.04)

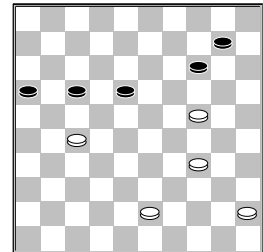
Roedolph, A.F. (Fred)
 Chandarsing, R. (Radji)
 NC 2e klasse D 07-02-2015

1.31-26 18-23 2.36-31
 12-18 3.41-36 7-12
 4.46-41 2-7 5.33-29
 20-24 6.29x20 15x24
 7.31-27 17-21 8.26x17
 11x31 9.36x27 10-15
 10.34-30 4-10 11.30-25
 7-11 12.39-33 11-17
 13.44-39 6-11 14.50-44
 15-20 15.40-34 10-15
 16.34-30 1-6 17.41-36
 24-29 18.33x24 20x29
 19.37-31 17-21 20.31-26
 11-17 21.44-40 14-20
 22.25x14 19x10 23.39-34
 9-14 24.38-33 29x38
 25.42x33 14-19 26.43-39
 10-14 27.48-43 5-10
 28.30-25 15-20 29.47-42
 10-15 30.34-29 23x34
 31.40x29 3-9 32.39-34
 19-23 33.33-28 13-19
 34.28-22 17x30 35.35x2
 21x32 36.2-30 23x34
 37.30x4 20-24 38.4-31
 12-17 39.31-37 24-29
 40.37x5 29-33 41.49-43
 6-11 42.5-19 17-22
 43.19-35 11-17 44.43-38
 33x42

2-0 (0.37/1.03)

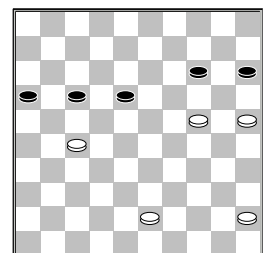
Vaal-Kokshoorn, de, H.
 Dijk, van, C. (Kees)
 NC 2e klasse D 07-02-2015

1.32-28 18-23 2.38-32
 12-18 3.42-38 7-12
 4.47-42 1-7 5.34-30
 20-24 6.40-34 14-20
 7.30-25 17-21 8.25x14
 9x20 9.34-29 23x34
 10.39x30 20-25 11.44-40
 25x34 12.40x20 15x24
 13.50-44 18-23 14.33-29
 24x22 15.32-27 21x32
 16.38x29 12-18 17.44-40
 7-12 18.43-38 10-14
 19.49-43 2-7 20.37-32
 4-9 21.41-37 11-17
 22.46-41 7-11 23.32-27
 5-10 24.31-26 17-21
 25.26x17 12x32 26.38x27
 11-17 27.37-31 17-21
 28.42-38 21x32 29.38x27
 18-22 30.27x18 13x22
 31.31-27 22x31 32.36x27
 8-12 33.43-38 9-13
 34.41-36 6-11 35.36-31
 11-17 36.31-26 3-8
 37.48-43 17-21 38.26x17
 12x32 39.38x27 13-18
 40.29-24 19x30 41.35x24
 8-12 42.40-34 12-17



43.34-30?
 [remise geeft de
 volgende variant
 >43.34-29 17-21
 44.27-22 18x27
 45.29-23 27-31
 46.23-18 31-36
 47.18-12 36-41 48.12-8
 41-47 49.8-3 47x15
 50.3x26 15-33 51.26-3
]

43...10-15 44.30-25



18-23

[kansen voor zwart
geeft de volgende variant
>44...17-22 45.25-20
14x25 46.24-19 22x31
47.19-14 31-36 48.14-9
18-23 49.9-3 36-41
50.3-26 41-46 51.43-38
23-29]

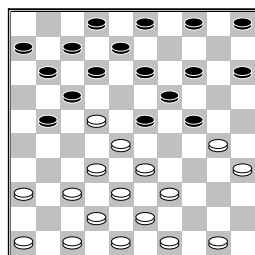
45.43-38 23-28 46.27-22
28-32 47.22x11 32x43
48.11-7
1-1 (1.47/1.02)

□ Dingemans, L.M. (Lauw)
■ Lachman, R. (Rajesh)
NC 2e klasse D 07-02-2015

1.34-30 20-25 2.31-26
25x34 3.39x30 19-23
4.44-39 14-19 5.50-44
10-14 6.30-25 5-10
7.37-31 17-21 8.26x17
12x21 9.41-37 7-12
10.33-29 23x34 11.39x30
19-23 12.44-39 14-19
13.39-33 10-14 14.43-39
1-7 15.49-43 21-27
16.31x22 18x27 17.32x21
16x27 18.39-34 11-16
19.34-29 23x34 20.30x39
19-23 21.39-34 14-19
22.33-29 6-11 23.29x18
12x23 24.34-30 13-18
25.43-39 11-17 26.39-34
17-21 27.34-29 23x34
28.40x29 7-12 29.29-23
18x29 30.38-32 27x38
31.42x13 8x19 32.45-40
12-18 is onmogelijk om
uit de notatie van beide
spelers te komen
2-0 (1.02/0.47)

□ Stroom, van der, M. (Mi)
■ Visser, D. (David)
NC 2e klasse D 07-02-2015

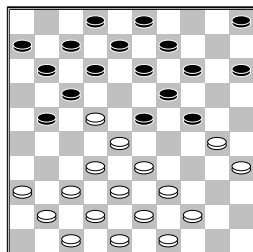
1.33-28 18-23 2.39-33
12-18 3.44-39 20-24
4.34-29 23x34 5.40x20
15x24 6.45-40 7-12
7.40-34 1-7 8.34-30
18-23 9.31-27 10-15
10.37-31 13-18 11.41-37
9-13 12.27-22 18x27
13.31x22 16-21



14.46-41? 4-9?

[winst is >14...12-18
15.39-34 (15.37-31
18x27 16.31x22 24-29
17.33x24 23-29
18.24x33 19-23
19.28x10 17x46)
15...18x27 16.43-39
14-20 17.30-25 4-9]

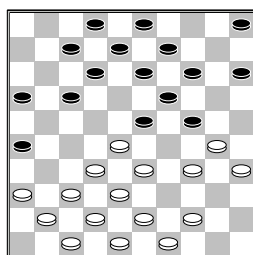
15.50-44



[gelijkwaardige stand
lever de volgende zet op
>15.22-18 13x22
16.32-27 22x31
17.36x16 23x32
18.38x27 8-13 19.49-44
12-18 20.30-25]

15...21-26?
[>15...12-18 16.30-25
(16.37-31 18x27
17.31x22 24-29
18.33x24 15-20
19.24x15 14-20
20.15x24 23-29
21.24x33 19-23
22.28x19 17x46)
16...18x27 17.28-22
27x18 18.32-28 23x32
19.38x16]

16.39-34 11-16 17.22x11
6x17

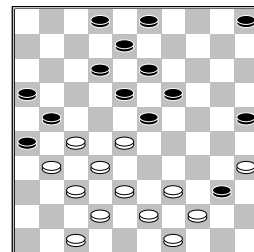


18.43-39?

[beter voor wit is
>18.44-39 14-20
19.30-25 24-29
20.33x24 20x40
21.35x44 15-20
22.25x14 19x10
23.28x19 13x24
24.39-33 10-14
25.33-29 24x33
26.38x29]
18...17-21 19.36-31
12-18 20.48-43 7-12
21.31-27 14-20 22.41-36

[gelijkwaardige stand
levert op >22.28-22
24-29 23.33x24 20x40
24.30-24 19x30
25.35x24 9-14 26.44x35
14-20 27.35-30 20x29
28.39-33 5-10 29.33x24
10-14 30.30-25 14-19
31.43-39 19x30
32.25x34 23-29
33.34x23 18x29
34.38-33 29x38
35.42x33]

22...24-29 23.33x24
20x40 24.30-25 15-20
25.25x14 9x20 26.36-31
20-25



27.38-33?
[beter voor wit is
>27.35-30 25x34
28.44x35 12-17
29.39x30]
27...40-45 28.44-40
45x34 29.39x30 25x34
30.33-29 34-40 31.35x44
23x34 32.42-38 19-23
33.28x19 13x24 34.38-33
24-30 35.47-42 5-10
36.43-39 34x43 37.49x38
10-14 38.33-28 30-34
39.44-39 34x43 40.38x49
14-19 41.49-44 18-23
42.42-38 23-29 43.44-39
19-24 44.39-33 29-34
45.28-23 34-40 46.33-28
12-18 47.23x12 8x17
48.38-33 40-44 49.28-23
44-49 50.33-28 49-43
0-2 (0.19/0.09)

□ Stuurstraat, N. (Nico)
■ Snellaars, M.A.J. (Rin)
NC 2e klasse D 07-02-2015

1.34-30 20-25 2.32-28
25x34 3.39x30 19-24
4.30x19 14x32 5.37x28
17-22 6.28x17 11x22
7.44-39 18-23 8.50-44
12-18 9.41-37 7-12
10.37-32 13-19 11.32-27
8-13 12.40-34 2-8
13.44-40 10-14 14.34-29
23x34 15.40x29 19-23
16.49-44 23x34 17.39x30
1-7 18.30-24 12-17
19.46-41 7-11 20.45-40

4-10 21.43-39 17-21
 22.48-43 21x32 23.38x27
 8-12 24.35-30 12-17
 25.40-35 14-20 26.42-38
 20x29 27.33x24 10-14
 28.44-40 14-19 29.39-33
 9-14 30.47-42 14-20
 31.30-25 20x29 32.33x24
 19x30 33.35x24 5-10
 34.40-34 10-14 35.34-29
 3-9 36.42-37 14-19
 [beter voor wit is
 >36...17-21 37.38-33
 21x32 38.37x17 11x22
 39.24-20 15x24
 40.29x20 13-19
 41.20-15 19-24
 42.31-27 22x31
 43.36x27 18-23
 44.43-38 23-29
 45.38-32 29x38
 46.32x43 24-29
 47.25-20 14x25
 48.15-10]
 37.29-23 18x20 38.25x3
 22-28 39.3x26 19-24
 2-0 (0.06/0.10)

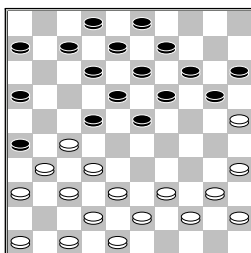
☐ Kolstee, J. (John)
 ■ Rompa, S. (Simon)
 NC 2e klasse D 07-02-2015

1.33-28 18-23 2.39-33
 12-18 3.44-39 7-12
 4.50-44 1-7 5.31-27
 20-24 6.37-31 14-20
 7.34-30 10-14 8.30-25
 17-22 9.28x17 12x21
 10.33-28 7-12 11.41-37
 21-26 12.47-41 4-10
 13.39-33 12-17 14.43-39
 17-22 15.28x17 11x22
 16.33-28 22x33 17.39x28
 2-7 18.27-22 18x27
 19.31x22 7-11 20.36-31
 11-17 21.22x11 6x17
 22.41-36 17-21 23.31-27
 23-29 24.27-22 21-27
 25.22x31 29-34 26.40x29
 24x22 27.31-27 22x31
 28.36x27 20-24 29.32-28
 24-29 30.28-22 19-23
 31.37-31 26x37 32.42x31
 14-19 33.48-43 10-14
 34.31-26 8-12 35.46-41
 15-20 36.41-36 3-8
 37.44-40 5-10 38.38-33
 29x38 39.43x32 20-24
 40.36-31 23-29 41.49-43
 10-15 42.40-34 29x40
 43.35x44 24-29 44.43-38
 15-20 45.44-39 20-24
 46.38-33 29x38 47.32x43
 12-18 48.22-17 8-12
 49.17x8 13x2 50.39-33
 19-23 51.45-40 9-13
 52.26-21 23-29 53.43-38

13-19 54.21-17 19-23
 55.31-26 2-8 56.27-21
 16x27 57.17-11 27-32
 58.38x27 29x38 59.11-7
 38-42 60.7-1 24-30
 61.25x34 42-47 62.34-29
 23x45 63.1x10 45-50
 64.10-32 8-13 65.27-21
 47-29 66.21-16 29-1
 67.32-5 50-22 68.16-11
 22x6 69.26-21 13-18
 70.21-16 6-22 71.5-10
 1-6 72.10-41
 1-1 (0.09/0.29)

☐ Osté, K. (Kees)
 ■ Schreurs, M.J. (Jan)
 NC 2e klasse D 07-02-2015

1.31-27 17-21 2.33-28
 19-23 3.28x19 14x23
 4.39-33 10-14 5.33-28
 4-10 6.28x19 14x23
 7.44-39 10-14 8.39-33
 14-19 9.50-44 5-10
 10.44-39 10-14 11.49-44
 11-17 12.33-28 7-11
 13.36-31 21-26 14.41-36
 1-7 15.34-30 17-22
 16.28x17 11x22 17.30-25

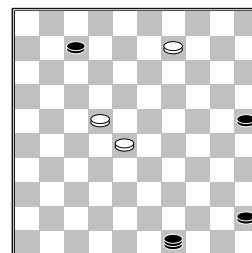


22-28
 [een betere stand
 levert op de volgende
 variant >17...20-24
 18.47-41 7-11 19.27-21
 26x17 20.31-27 22x31
 21.36x27 2-7 22.39-33
 23-28 23.33x22 17x28
 24.32x23 19x28]
 18.35-30 20-24 19.40-35
 24-29 20.44-40 29-34
 21.40x29 23x34 22.32x23
 19x28 23.30-24 18-23
 24.39x30 14-20 25.25x14
 9x29 26.30-25 13-19
 27.38-32 28-33 28.45-40
 8-13 29.40-34 29x40
 30.35x44 12-18 31.43-39
 7-12 32.39x28 3-9
 33.42-38 9-14 34.48-43
 2-8 35.47-42 14-20
 36.25x14 19x10 37.28x19
 13x24 38.32-28 24-30
 39.27-22 18x27 40.31x22
 6-11 41.37-32 12-17
 42.42-37 8-13 43.43-39
 15-20 44.38-33 20-24

45.44-40 30-35 46.37-31
 26x37 47.32x41 35x44
 48.39x50 10-14 49.50-44
 14-19 50.44-39 24-29
 51.33x24 19x30 52.41-37
 16-21 53.37-32 11-16
 54.22x11 16x7 55.28-23
 21-26 56.32-28 7-11
 57.28-22 11-16 58.46-41
 16-21 59.41-37
 2-0 (0.15/0.07)

☐ Callender, H.E. (Hedwi)
 ■ Kroonen, W. (Wout)
 NC 2e klasse D 07-02-2015

1.33-29 20-25 2.29-24
 19x30 3.35x24 17-21
 4.32-27 21x32 5.37x28
 11-17 6.41-37 6-11
 7.46-41 1-6 8.37-32
 17-21 9.31-27 21-26
 10.41-37 14-19 11.40-35
 19x30 12.35x24 10-14
 13.45-40 14-19 14.40-35
 19x30 15.35x24 9-14
 16.44-40 4-10 17.49-44
 14-20 18.34-29 3-9
 19.38-33 18-22 20.28x17
 11x31 21.36x27 9-14
 22.42-38 14-19 23.40-35
 19x30 24.35x24 10-14
 25.44-40 14-19 26.40-35
 19x30 27.35x24 5-10
 28.50-44 10-14 29.44-40
 14-19 30.40-35 19x30
 31.35x24 6-11 32.47-42
 11-17 33.37-31 26x28
 34.33x11 12-17 35.11x22
 13-18 36.22x13 8x30
 37.39-34 30x39 38.43x34
 20-24 39.29x20 15x24
 40.48-43 24-30 41.43-39
 30-35 42.38-33 7-12
 43.42-38 2-8 44.38-32
 8-13 45.32-28 13-19
 46.34-29 35-40 47.29-23
 19-24 48.28-22 12-17
 49.22x11 16x7 50.23-18
 40-45 51.33-28 24-29
 52.18-13 29-33 53.27-22
 33x44 54.13-9 44-49



55.9-4?
 [remise is nog steeds
 >55.22-18 49-35
 56.18-12 7x18 57.9-4
 45-50 58.4x36 50x6]

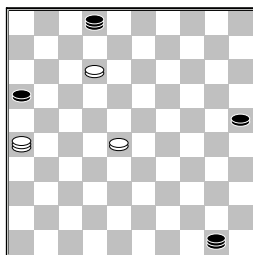
55...49-35?

[winst is >55...49-40
 56.22-17 45-50
 57.28-22 25-30 58.4-10
 40-49 59.10-37 50-45
 60.37-48]

56.22-18?

[wit mist de remise
 >56.28-23 35-8
 57.23-19 8x35 58.22-17
 45-50 59.17-12 7x18
 60.4x36]

56...35-8 57.4-15 7-11
 58.15-42 11-16 59.42-26
 8-2 60.18-12 45-50



61.12-7

[61.28-23 16-21
 62.26x17 50x6
 A) 63.12-7 2x11
 64.23-19 11-28
 65.19-13 28-19
 66.13x24 6-28
 B) 63.23-19 2x24
 64.12-7 6-1
 (64...6-11 65.7x16
 24-2) 65.7-2 25-30
]

0-2 (0.31/0.34)

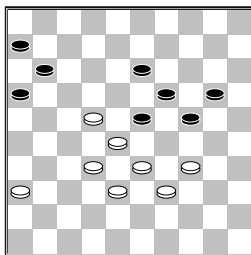
□ Oosterhout, van, J. (Ja)

■ Vaal, de, R. (Ron)

NC 2e klasse D 07-02-2015

1.32-28 19-23 2.28x19
 14x23 3.34-30 10-14
 4.30-25 14-19 5.25x14
 9x20 6.35-30 5-10
 7.30-25 10-14 8.33-28
 23x32 9.37x28 4-9
 10.39-33 17-22 11.28x17
 12x21 12.44-39 7-12
 13.42-37 21-26 14.47-42
 1-7 15.31-27 18-23
 16.50-44 12-18 17.37-31
 26x37 18.41x32 7-12
 19.33-28 11-17 20.36-31
 2-7 21.46-41 7-11
 22.41-36 17-22 23.28x17
 12x21 24.39-33 21-26
 25.33-28 26x37 26.42x31
 20-24 27.44-39 8-12
 28.39-33 14-20 29.25x14
 9x20 30.49-44 11-17
 31.44-39 17-21 32.31-26
 12-17 33.40-34 17-22
 34.26x17 22x11 35.48-42
 24-29 36.33x24 20x40

37.45x34 15-20 38.39-33
 20-24 39.43-39 3-9
 40.42-37 9-14 41.37-31
 14-20 42.27-22 18x27
 43.31x22



11-17

[sneller wint
 >43...16-21 44.22-18
 23x12 45.34-29 20-25
 46.29x20 25x14
 47.33-29 21-26
 48.38-33 12-17
 49.32-27 11-16
 50.29-23]

44.22x11 6x17 45.36-31
 17-21 46.31-27 20-25
 47.28-22 13-18 48.22x13
 19x8 49.27-22 8-13
 50.33-28 13-19 51.39-33
 21-26 52.34-29 23x34
 53.32-27 34-40 54.22-18
 40-44 55.18-12 44-49
 56.38-32 26-31 57.27x36
 0-2 (1.00/0.47)