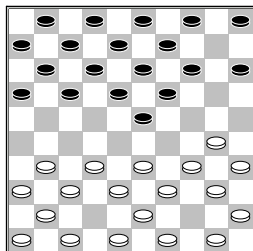


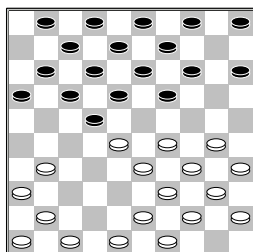
Bremmer, W. (Wim)
 Groeneweg, J. (Jan)
 Nationale Clubcom 28-11-2015

1.33-29 19-23 2.35-30
 20-25 3.40-35 14-20
 4.44-40 10-14 5.38-33
 14-19 6.42-38 20-24
 7.29x20 25x14



De nu volgende zet van wit is nog nooit voorgekomen in de database van TDAM.

8.33-29 17-22 9.50-44
 Na deze zet zijn kan de database wel weer wat gegevens weergeven. Wim heeft 2 zetten omgewisseld. Zal hem nog eens vragen wat hiervan de redenk geweest kan zijn. **11-17**
10.38-33 6-11 11.32-28
23x32 12.37x28



16-21

[In de database komt de volgende partij voor:
 12...5-10 13.30-24
 19x30 14.34x25 13-19
 15.41-37 19-23
 16.28x19 14x34
 17.40x29 16-21
 18.31-26 8-13 19.45-40
 10-14 20.40-34 14-19
 21.34-30 21-27
 22.37-32 27x38
 23.43x32 11-16
 24.30-24 19x30
 25.35x24 22-27
 26.32x21 16x27
 27.33-28 2-8 28.39-33
 17-22 29.28x17 12x21
 30.26x17 18-23
 31.29x18 13x11
 32.44-39 wit zou later winnen]
13.43-38 1-6 Nu komen

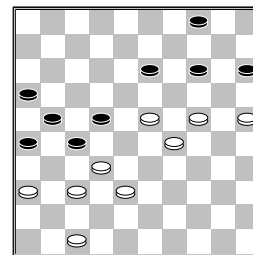
we weer terecht in de varianten in de database
14.30-24 Wim zorgt er nu voor dat beide op eigenkracht verder moeten en niet meer op de theorie voort kunnen borduren.

[In de database komt de volgende partij voor:

14.48-43 21-27
 15.38-32 27x38
 16.43x32 22-27
 17.32x21 17x37
 18.41x32 4-10 19.30-24
 19x30 20.35x24 18-23
 21.28x19 14x23
 22.29x18 13x22
 23.34-29 10-14
 24.46-41 9-13 25.41-37
 12-18 26.47-42 7-12
 27.40-34 13-19
 28.24x13 8x19 29.29-24
 19x30 30.34x25 2-8
 31.49-43 8-13 32.43-38
 13-19 33.45-40 5-10
 34.40-34 11-17
 35.37-31 6-11 36.32-27
 19-23 37.31-26 22x31
 38.36x27 17-22
 39.34-29 23x21 40.26x6
 22-27 41.33-28 18-23
 42.28x19 14x23 43.6-1
 12-18 44.44-39 3-8
 45.1-7 27-31 46.7-2
 8-12 47.2-35 10-14
 48.35-19 23-28
 49.19x20 15x24 Deze partij eindigde in remise. Volgens de eindspel database is het ook remise.]

14...19x30 15.35x24
21-26 16.48-43 26x37
17.41x32 22-27 18.32x21
17x26 19.46-41 11-17
20.41-37 5-10 21.38-32
7-11 22.43-38 17-22
23.28x17 12x21 24.40-35
18-23 25.29x18 13x22
26.45-40 14-19 27.24x13
9x18 28.33-29 10-14
29.49-43 11-16 30.29-23
18x29 31.34x23 22-27
32.39-33 8-13 33.44-39
6-11 34.39-34 11-17
35.43-39 13-18 36.23x12
17x8 37.34-29 8-12
38.40-34 12-17 39.35-30
2-8 40.29-23 8-13
41.34-29 3-9 42.30-25
13-18 43.23x12 17x8
44.39-34 8-12 45.29-23
9-13 46.33-29 12-17
47.29-24 17-22 48.34-29

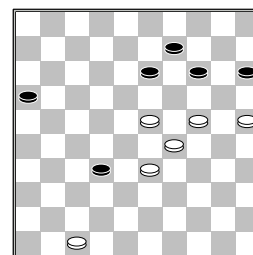
(diagram)



4-9

[Zwart kan bijna meteen remise maken door
 >48...14-19 49.23x14
 22-28 50.32x23 27-31
 51.36x27 21x43
 52.23-19 43-49 53.19x8
 49-35 54.24-20 15x33
 55.8-2 33-39 56.14-9
 4x13 57.2x48 35-19
 58.47-41 26-31
 59.37x26 19x46]

49.38-33 27x38 50.33x42
22-27 51.37-32 27x38
52.42x33 26-31 53.36x27
21x32



54.24-20

[Nu schijf 16 nog staat waar hij staat is de volgende variant een optie voor wit die meer kans met zich meebrengt:

>54.25-20 14x25
 55.23-19 13-18
 56.19-13 9-14 57.13x22
 14-19 (57...15-20
 58.24x15 25-30
 59.29-24 30x19
 60.22-18 19-24
 61.18-12 24-29
 62.33x24 32-38
 63.47-42 38x47 64.12-8
 47x20 65.15x24)
 58.24x13 25-30 59.13-8
 30-35 60.8-3 35-40
 61.29-24

A) 61...32-38
 62.33x42 40-44
 63.42-37 44-49
 64.24-19 49-44
 65.22-18
B) 61...40-44?
 62.33-28 32x23
 63.22-18 23x12
 64.3x50
C) 61...32-37
 62.22-18 40-44

63.18-12 44-49
 (63...44-50? 64.24-20
 50x8) 64.12-7 49-44
 65.33-29 44-49 66.7-2
 49-40 67.3-26 40x23
 68.26x48 23-14
 69.48-43 14-46
 70.43-49 46-28
 71.2-13 28-14
 72.13-36 14-37
 73.49-35 37-48

C1) 74.24-19 48-25
 75.19-13 16-21
 76.35-19 25-43
 77.13-9 43-49 78.9-4
 21-26 79.36-13 49-21
 80.19-5 21-16
 81.47-42 16-7
 82.42-37 7-40
 83.13-24 40-1
 84.4-36 1-6 85.24-47
 6-39 (85...6-1
 86.36-18 1x46
 87.47-24) 86.47-33
 39x46 87.36-9

C2) 74.36-41 48-25
 75.41-32 25-3
 76.32-43 3-25
 (76...3-14 77.47-41
 14x46 78.43-32 46x30
 79.35x24 16-21
 80.24-38 21-26
 81.38-42) 77.43-48

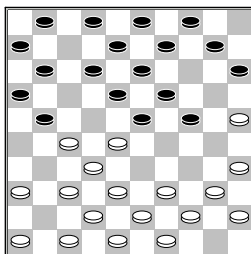
C2a) 77...15-20
 78.24x15 25-14
 79.48-25 14-28
 80.35-49 28-19
 81.47-42 19-28
 82.42-38 28-22
 83.25-3 22-50
 84.15-10 50-45
 85.10-5

C2b) 77...25-3
 78.48-25 3-26
 79.47-41 26-3
 80.41-36 16-21
 (80...15-20 81.24x15
 3-12 82.15-10 16-21
 83.10-5 12-29
 84.25-43 21-26
 85.5-46) 81.24-20
 15x24 82.35x26]

54...15x24 55.29x20
16-21 56.20-15 21-27
57.25-20 14x25 58.15-10
25-30 59.10-4 30-35
60.47-41 9-14 61.4x31
35-40 62.31-22 40-44
63.22-13 44-49 64.13-2
32-37 65.41x32
1-1

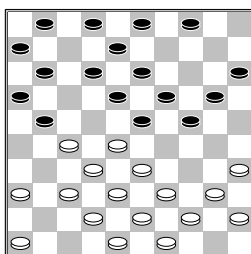
☐ Emmaneel, R. (René)
 ■ Lodder, P. (Piet)
 Nationale Clubcom 28-11-2015
1.32-28 19-23 2.28x19

14x23 3.37-32 10-14
4.41-37 5-10 5.34-29
23x34 6.39x30 14-19
7.30-25 20-24 8.44-39
18-23 9.50-44 12-18
10.33-28 7-12 11.31-27
17-21



12.38-33
 [Wit kan nu een dam
 nemen, na afname staat het
 gelijk en staat zwart iets
 makkelijker. Maar of je
 deze dam toe moet laten in
 de opening tegen een op
 papier mindere speler
 lijkt mij toch geen goed
 idee. 12.27-22 18x27
 13.38-33 27x29
 14.39-34 23x41 15.34x5
 13-19 16.5x7 1x12
 17.46x37]

12...10-14 13.42-38
14-20 14.25x14 9x20
15.47-42



1-7
 [In de database komt de
 volgende zet voor
 15...21-26 16.40-34
 24-29 17.33x24 20x40
 18.45x34 15-20
 19.39-33 20-24
 20.44-39 11-17
 21.46-41 17-21
 22.36-31 12-17
 23.41-36 17-22
 24.28x17 21x12
 25.33-28 1-7 26.34-30
 7-11 27.49-44 11-17
 28.27-21 16x27
 29.31x11 6x17 30.36-31
 2-7 31.31-27 Wit zou
 de partij later winnen]
16.40-34 24-29 17.33x24
20x40 18.45x34 15-20
19.39-33 20-24 20.44-39
3-9 21.34-30 9-14

22.37-31 21-26 23.30-25
26x37 24.42x31 11-17
25.27-22 18x27 26.31x11
6x17 27.36-31 17-21
 [27...16-21 28.31-27
 21-26 29.46-41 13-18
 30.49-44 8-13 31.44-40
 7-11 32.48-42 2-7
 33.42-37 11-16
 34.41-36

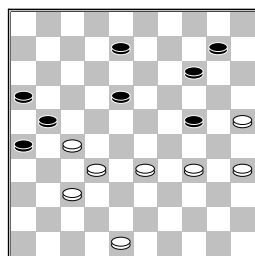
A) 34...4-9 35.40-34
 17-21 36.34-30 12-17
 37.28-22 17x28
 38.33x22 7-11 vanaf
 dit moment staat deze
 stand in de database, het
 ging toen verder met:
 39.39-33 23-28
 40.32x12 21x41
 41.36x47 11-17
 42.22x11 16x18
 43.33-28 18-23
 44.28-22 24-29
 45.38-32 29-33
 46.32-27 33-39
 47.43x34 23-29
 48.34x23 19x17
 49.27-21 17-22
 50.21-16 22-28
 51.16-11 28-33 en wit
 won

B) 34...17-21
 35.40-34 4-10
B1) 36.37-31 26x37
 37.32x41 23x32
 38.34-29 10-15
 39.29x9 13x4
 40.36-31 4-9
 (40...21-26 41.41-36
 26x37 42.35-30 32x21
 43.38-32 37x28
 44.33x24=)

B2) 36.34-30 10-15
 37.39-34 7-11
 38.36-31 23-29
 39.34x23 18x29
 40.28-22 12-18
 41.33-28 18-23
 42.43-39 29-34
 43.38-33 34x43
 44.33-29 24x33
 45.28x48 15-20

B2a) 46.48-42 20-24
 47.42-38 24-29 +
B2b) 46.48-43 20-24
 47.43-39 24-29
 48.39-34 29x40
 49.35x44 23-29
 (49...14-20 50.25x14
 19x10 51.30-24
 13-18 52.22x13
 23-28 53.32x23
 21x41 54.13-9 26x37
 55.9-4 37-42
 56.4x15 42-48
 57.23-19 41-46
 58.19-13 46-19

59.13-8 19x49
 60.8-3=) 50.22-18
 13x22 51.27x18
 11-17 52.44-39
 17-22 53.18x27
 19-23 54.27-22
 21-27 55.32x21
 26x28]
28.31-27 12-18 29.46-41
7-12 30.41-37 4-10
31.49-44 2-7 32.44-40
7-11 33.40-34 21-26
34.34-30 11-17 35.39-34
17-21 36.34-29 23x34
37.30x39 18-23 38.39-34
24-29 39.33x24 19x39
40.43x34 12-18 41.28x19
13x24 42.38-33



18-23 Na deze zet komt wit goed te staan
 [Beter voor zwart is >42...14-19 Dat zwart deze zet naliet vanwege de dam die er nu in zit en hij het eindspel waarschijnlijk op verlies taxeerde. Belangrijk is de een goede eindspel kennis.

- A)** 43.48-43 8-12
 44.33-28 18-23
 45.43-39 10-14
 46.34-30 12-18
- B)** 43.25-20 24x15
 44.37-31 26x30
 45.35x2 21x32

- B1)** 46.2-7 18-22
 47.7-23 22-28
 48.23x5 15-20
 49.5-10 20-25
 50.48-43 25-30
 51.43-38 32x43
 52.10x49 30-35
 53.49-44 16-21
 54.44-50 21-27
 55.50-45 27-32=

B2) 46.2-19 15-20
 47.19x37 20-24
 48.37x5

B2a) 48...24-30 Dit is de enige weg naar de remise. 49.5-28
 30-35 50.28-17
 (50.28-44 18-23
 51.48-42 16-21
 52.42-37 21-26
 53.37-32 23-29

54.32-27 29-34=)
 50...35-40 51.17-50
 40-45 52.48-43
 16-21 53.43-38
 18-22 54.50x26
 45-50=

B2b) 48...18-22
 49.5-37 22-27
 50.37-41 27-31
 51.48-43 16-21
 52.43-39 24-29
 53.41-46 31-36
 54.46-37 21-27
 55.37-14 (55.37-46?
 27-32 56.46x34
 36-41=) 55...27-31
 56.14-32 met winst

B2c) 48...24-29
 49.5-23 29-33
 50.23x12 33-39
 51.12-17 +

B2d) 48...16-21
 49.5-32

B2d1) 49...21-26
 50.32-27 18-23
 51.27-13 24-29
 52.13-4 23-28
 53.4-10 28-32
 54.10x37 29-34
 55.37-23 34-39
 56.23-28 26-31
 57.28x50 31-37
 58.50-28 +

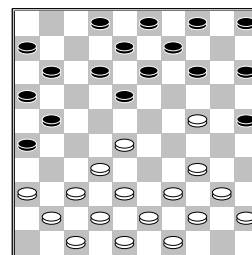
B2d2) 49...18-22
 50.32x16 24-29
 (50...24-30 51.16-7
 22-27 52.48-42
 27-31 53.7-1 30-35
 54.1-45 31-36
 55.42-37 +)
 51.16-7 29-33
 52.7-11 22-28
 53.48-42 +

B2d3) 49...24-29
 50.32x16 29-34
 51.16-7 +]
43.27-22 8-13 44.48-43
14-19 45.34-30 10-14
46.33-28 21-27 47.22x31
13-18 48.31-27 14-20
49.25x14 19x10 50.28x19
24x13 51.32-28
2-0

□ Groot,de,G.J. (Gerard
 ■ Tesselaar,M.T. (Theo)
 Nationale Clubcom28-11-2015

1.32-28 18-22 2.37-32
12-18 3.41-37 7-12
4.46-41 20-25 5.34-29
14-20 6.40-34 10-14
7.45-40 1-7 8.31-26
16-21 9.37-31 11-16
10.31-27 22x31 11.26x37
7-11 12.29-24 20x29
13.33x24 19x30 14.35x24

21-26 15.50-45 17-21



16.34-29
 [In de database komt deze stand voor 16.38-33 na er zijn 2 antwoorden hierop in de database

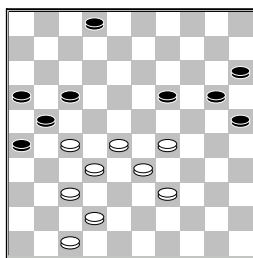
A) 16...4-10 17.43-38
 18-22 18.28x17 11x22

- 19.48-43 22-27
- 20.33-29 14-20
- 21.32-28 6-11
- 22.28-23 11-17
- 23.40-35 17-22
- 24.34-30 25x34
- 25.39x30 12-17
- 26.44-39 8-12
- 27.30-25 9-14
- 28.45-40 22-28
- 29.23x32 26-31
- 30.37x26 17-22
- 31.26x19 14x45
- 32.32x21 16x27
- 33.25x14 10x30
- 34.35x24 45-50
- 35.49-44 50-45
- 36.41-37 45-12
- 37.38-33 12-8 en wit

gaf op
B) 16...12-17
 17.42-38 5-10
 18.48-42 17-22
 19.28x17 11x22
 20.32-27 22x31
 21.36x27 21x32
 22.37x28 16-21
 23.41-37 6-11
 24.34-29 11-16
 25.38-32 14-20
 26.42-38 10-14
 27.37-31 26x37
 28.32x41 21-26
 29.41-37 16-21
 30.38-32 18-22
 31.28x17 21x12
 32.33-28 14-19
 33.40-35 19x30
 34.35x24 9-14
 35.44-40 14-19
 36.40-35 19x30
 37.35x24 4-10
 38.49-44 10-14
 39.45-40 12-17
 40.39-33 17-21
 41.43-39 21-27
 42.32x21 26x17
 43.28-23 8-12

44.33-28 3-8 45.40-34
 13-18 46.37-32 18-22
 47.47-42 22x33
 48.39x28 8-13
 49.32-27 13-18
 50.42-37 2-8 51.37-32
 8-13 52.44-39 14-19
 53.23x14 20x9
 54.39-33 9-14
 55.24-20 15x24
 56.29x9 13x4 57.33-29
 4-10 58.29-24 18-23
 (58...10-14 59.34-29
 14-20 60.24x15 25-30
 61.29-24 30x19
 62.15-10) 59.28x19
 12-18 60.19-13 18x9
 61.24-19 10-15
 62.32-28 15-20
 63.28-23 9-13 64.19x8
 20-24 65.27-22 17x19
 66.8-2 en zwart gaf op
]

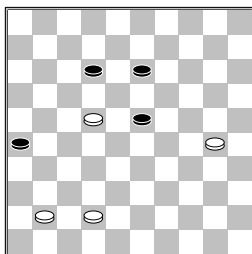
16...12-17 17.36-31
 18-22 18.41-36 22x33
 19.39x28 5-10 20.38-33
 14-20 21.42-38 10-14
 22.48-42 14-19 23.40-35
 19x30 24.35x24 9-14
 25.44-40 17-22 26.28x17
 11x22 27.31-27 22x31
 28.36x27 3-9 29.49-44
 14-19 30.40-35 19x30
 31.35x24 9-14 32.44-40
 4-10 33.33-28 14-19
 34.40-35 19x30 35.35x24
 10-14 36.43-39 6-11
 37.38-33 11-17 38.45-40
 14-19 39.40-35 19x30
 40.35x24 13-19 41.24x13
 8x19



42.39-34
 [Niet winnend is het
 schijfwinst door
 42.28-23 19x28
 43.33x11 16x7 44.27x16
 20-24 45.29x20 15x24
 46.32-28 24-30
 47.39-33 30-34
 48.28-23 34-40
 49.23-19 40-44
 50.19-14 44-50
 51.33-29 50-28 52.14-9
 28x46 53.9-4 46-28
 54.29-24 7-11 55.16x7
 2x11 met gelijkwaardig

eindspel, remise dus]
 [Een andere optie is
 42.29-23 19-24
 43.42-38
A) 43...2-8 44.47-41
 8-13 45.23-19 13-18
 46.19x30 25x43
 47.38x49 20-24
 48.49-44 15-20
 49.44-39 17-22
 50.28x17 21x12
 51.32-28 20-25
 52.28-22 18-23
 53.22-18 26-31
 54.18x20 31x42
 55.41-37 42x22
 56.20-15 22-27
 57.15-10 27-31
 58.10-5 31-36 59.5-37
 16-21 60.37-46 21-27
 61.46-10 12-18
 62.39-34 18-23
 63.10x16 36-41=
B) 43...25-30
 44.39-34 30x39
 45.33x44 20-25
 46.27-22 25-30
 47.22x11 16x7
 48.28-22 15-20
 49.22-18 20-25
 50.38-33 2-8 51.32-28
 30-34 52.18-13 8x19
 53.23x14 24-30
 54.14-10 30-35
 55.10-4 21-27
 (55...34-40? 56.37-32
 40x49 57.4-36 49x27
 58.36x1) 56.4x36
 34-40 57.44-39 40-45
 58.36-18 7-11
 59.28-22 11-16
 60.18-13]

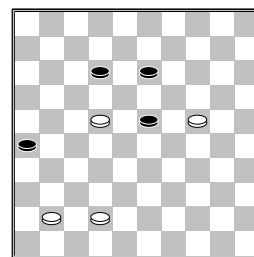
42...2-8 43.47-41 8-13
 44.27-22 20-24 45.29x20
 15x24 46.22x11 16x7
 47.28-22 7-12 48.33-29
 24x33 49.34-30 25x34
 50.32-27 21x32 51.37x30
 19-23



52.30-24

(diagram)

[Zelf dacht ik nog even
 dat wit een goede kans

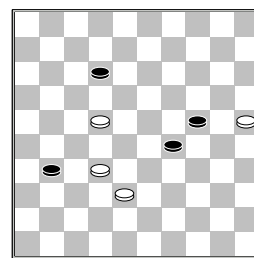


gemist had door 52.41-37
 te spelen gevolgd door

A) 52...12-18
 53.22-17 23-28
 54.17-11 28-33
 55.11-7
A1) 55...33-39
 56.7-1 18-22 57.1-6
 +
A2) 55...18-23
 56.30-24 33-39
 57.7-2 13-19
 (57...13-18? 58.2-7
 +) 58.24x13 39-44
 59.13-9 44-50
 60.2-13 50-11
 61.42-38 23-28
 62.9-4 11-7 63.13-2
 7-45=

B) Ik had dus deze zet
 even niet bekeken en
 begon niet te spelen en
 zwart in de partij
 speelde. 52...23-29

B1) 53.30-25 29-34
 54.25-20 34-39
 55.20-15 12-18
 56.22-17 39-44
 57.17-11 44-50
 58.11-7=
B2) Wil wit schijf
 tegen houden door
 53.42-38 te spelen,
 krijgt wit het nog
 "lastig" 13-19
B2a) 54.37-32 26-31
 55.32-27 31-36
 56.27-21 36-41
 57.22-17 12-18
 58.17-11 41-47
 59.21-17 47x33
 60.11-6 33x11
 61.6x17=
B2b) 54.30-25 19-24
 55.37-32 26-31



Deze stand komt voor in
 de database wit maakt

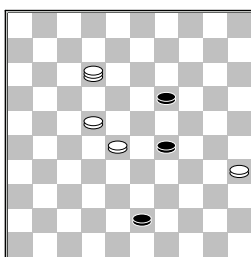
het nu remise door
 56.32-28 31-36
 57.38-32 29-33
 58.28x39 36-41
 59.32-27 41-47
 60.27-21 47-41
 61.22-17 12-18
 62.17-11 41-28
 63.11-7 28x44
 64.25-20 (64.7-1
 18-22 65.1-6 44-35
 66.6x15=) 64...24x15
 65.7-1 18-22=]

52...12-18
 [zwart kan beter
 >52...26-31 53.42-38
 12-18 54.22-17 23-28
 55.17-11 31-36
 56.41-37 18-22 57.11-7
 22-27 58.7-2 28-32
 59.2x19 32x43=]
53.22-17 23-28 54.42-38
26-31 55.17-11 18-23
56.11-7 31-37 57.41x32
28x37 58.38-32 37x28
59.7-2 13-19 60.24x13
28-32 61.13-9 32-37
62.9-3 37-41
 1-1

□ Wijnker, R. (Ritchie)
 ■ Teijn, F. (Frans)
 Nationale Clubcom28-11-2015

1.33-29 19-23 2.35-30
17-22 3.30-25 11-17
4.38-33 6-11 5.42-38
23-28 6.32x23 22-27
7.31x22 17x19 8.37-32
11-17 9.41-37 17-22
10.37-31 19-23 11.32-28
23x32 12.38x27 13-19
13.48-42 12-17 14.46-41
18-23 15.27x18 23x12
16.29-23 19x28 17.33x11
1-6 18.39-33 6x17
19.44-39 20-24 20.50-44
14-20 21.25x14 10x19
22.41-37 5-10 23.43-38
10-14 24.38-32 8-13
25.42-38 13-18 26.47-42
17-21 27.31-27 9-13
28.49-43 4-9 29.33-29
24x33 30.39x28 15-20
31.38-33 12-17 32.44-39
18-22 33.27x18 13x22
34.37-31 21-26 35.31-27
22x31 36.36x27 7-12
37.42-37 17-21 38.34-29
20-24 39.29x20 14x25
40.40-34 2-8 41.45-40
8-13 42.33-29 19-24
43.29x20 25x14 44.39-33
12-18 45.33-29 18-22
46.28x17 21x12 47.32-28
14-19 48.29-23 19-24
49.43-38 24-29 50.23-19

13x24 51.34x23 9-13
52.27-22 24-30 53.38-32
12-17 54.22x11 16x7
55.28-22 7-12 56.32-27
3-9 57.37-32 9-14
58.32-28 13-19 59.27-21
26x17 60.22x11 12-17
61.11x22 19-24 62.23-18
24-29 63.40-35 30-34
64.18-13 34-39 65.13-8
39-43 66.8-3 14-19
67.3-12



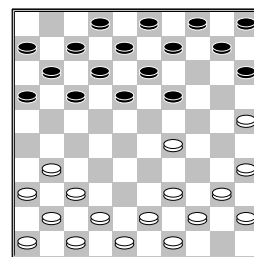
43-48
 [67...19-23 68.28x19
 29-33
A) 69.12-23 43-49
 70.23-34 33-38
 71.34-48 49-44
 72.22-18 44-17
 73.19-14 17-26
 74.48-39 38-42
 75.14-10 42-48
 76.39-50=
B) 69.12-34
B1) 69...33-39
 70.34-1 43-48=
B2) 69...43-48
 70.34-1 33-38=
B3) 69...43-49
 70.34-48 49-32
 71.19-13 33-38
 (71...32-28 72.22-18
 28-14 73.13-8 14-25
 74.48-26 33-39
 75.8-3 39-43=)
 72.13-9 32-19 73.9-3
 19-24 74.22-18 24-29
 w+]

68.12x45 19-24 Enige
 weg naar remise, deze stand
 komt ook voor in de
 database en wordt als
 remise aan gegeven.
 1-1

□ Dee, van, H. (Hein)
 ■ Koopmanschap, R. (Raym)
 Nationale Clubcom28-11-2015

1.34-29 17-22 2.40-34
11-17 3.45-40 6-11
4.50-45 1-6 5.29-24
20x29 6.33x24 19x30
7.34x25 14-19 8.32-28
22x33 9.38x29

(diagram)



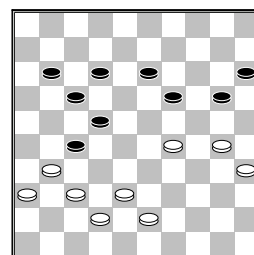
In de database bevinden
 zich andere varianten

18-23
 [9...19-24 10.29x20
 15x24
A) 11.42-38 10-14
 12.47-42 13-19
 13.40-34 8-13
 14.34-29 24x33
 15.38x29 5-10
 16.29-24 19x30
 17.25x34 14-19
 18.34-29 10-14
 19.31-26 16-21
 20.42-38 11-16
 21.37-32 21-27
 22.32x21 16x27
 23.38-32 27x38
 24.43x32 14-20
 25.49-43 4-10
 26.48-42 10-15
 27.41-37 9-14
 28.46-41 2-8 29.36-31
 3-9 30.41-36 20-25
 31.45-40 19-23
 32.40-34 14-20
 33.32-27 17-22
 34.42-38 13-19
 35.27-21 22-28
 36.37-32 28x37
 37.31x42 6-11
 38.38-32 11-17
 39.42-37 9-13
 40.37-31 20-24
 41.29x20 25x14
 42.34-29 23x34
 43.39x30 15-20
 44.44-39 20-24
 45.43-38 14-20
 46.30-25 18-23
 47.25x14 19x10
 48.38-33 10-14
 49.31-27 14-19
 50.32-28 23x32
 51.27x38 19-23
 52.36-31 17-22
 53.31-27 22x31
 54.26x37 12-18
 55.37-32 18-22
 56.39-34 13-19
 57.34-29 23x34
 58.32-28 8-13
 59.28x17 7-12 60.17x8
 13x2 61.21-17 2-7
 62.38-32 19-23
 63.32-27 23-29
 64.33-28 34-39

A1) 65.28-22 39-44
 66.17-12 7x18
 67.22x13=
A2) 65.27-21 39-44
 66.28-22 44-50
 67.22-18 50x6
 68.18-13 6-50
 69.35-30 24x35
 70.13-9 50-6 71.9-4
 29-34 72.21-16 34-40
 73.4-10 40-45
 74.10-23 45-50
 75.23x1 50-45
 (75...35-40 76.1x45
 6-1 +) 76.16-11
 6x17 +
B) 11.37-32 10-14
 (11...16-21 12.31-26
 21-27 13.32x21 11-16
 14.41-37 16x27
 15.40-34 7-11
 16.37-32 27x38
 17.42x33 partij
 eindigde later in remise
)
B1) 12.41-37 5-10
 13.46-41 17-21
 14.32-27 21x32
 15.37x28 16-21
 16.41-37 21-26
 17.39-33 11-17
 18.43-38 14-19
 19.44-39 18-23
 20.38-32 12-18
 21.31-27 10-14
 22.42-38 7-12
 23.47-42 4-10
 24.37-31 26x37
 25.42x31 10-15
 partij eindigde later in
 remise
B2) 12.32-28 13-19
 13.41-37 17-21
 14.37-32 18-23
 15.46-41 21-26
 16.41-37 8-13
 17.31-27 5-10
 18.43-38 10-15
 19.39-33 11-17
 20.49-43 17-21
 21.44-39 2-8
 22.40-34 14-20
 23.25x14 9x20
 24.27-22 4-9
 25.22-18 13x22
 26.28x17 8-13
 27.17x8 3x12
 28.34-30 20-25
 29.36-31 25x34
 30.39x30 12-18
 31.31-27 7-12
 32.33-28 12-17
 33.43-39 17-22
 34.28x17 21x12
 35.39-33 6-11
 36.33-28 11-17
 37.38-33 9-14

38.42-38 17-21
 39.45-40 12-17
 40.30-25 17-22
 41.28x17 21x12
 42.33-28 24-29
B2a) 43.35-30 18-22
 44.27x20 15x44
 45.37-31 26x37
 46.32x41 23x43
 47.48x50 19-24
 48.50-44 29-34
 49.41-37 12-18
 50.47-42 18-22
 51.37-32 16-21
 52.42-38 22-27
 53.32-28 27-31
 54.28-22 31-36
 55.22-18 36-41
 56.18-13 41-47
 57.25-20 47x50
 58.20x40=
B2b) 43.40-34 29x40
 44.35x44 15-20
 45.44-40 20-24
 46.40-35 12-17
 47.48-43 (47.47-41
 24-29 48.35-30
 29-34 49.30x39
 16-21 50.27x16
 18-22 51.41-36
 22x31 52.36x27
 13-18 53.48-42=)
 47...24-29 48.47-42
 29-34 49.35-30
 23-29 50.30x39
 18-23 51.39-33
 29-34 52.43-39
 34x43 53.38x49
 13-18 54.49-43
 14-20 55.25x14
 19x10 56.28x19
 17-22 57.19-13
 22x31 58.13x22
 31-36 59.32-27 en
 wit wint]
 [9...10-14 10.29-24
 (10.37-32 5-10
 11.41-37 19-23
 12.46-41 23x34
 13.39x30 14-19
 14.32-28 10-14
 15.37-32 18-23?)
 10...19x30 11.25x34
 14-19 12.39-33 9-14
 13.44-39 5-10 14.42-38
 17-22 15.31-26 11-17
 16.37-31 7-11 17.31-27
 22x31 18.26x37 later
 werd de partij remise]
 [9...19-23 10.42-38
 23x34 11.40x29 15-20
 12.25x14 10x19
 13.44-40 16-21
 14.31-26 5-10 15.39-34
 21-27 16.37-31 10-14
 17.31x22 18x27
 18.43-39 12-18

19.29-24 19x30
 20.35x24 7-12 zwart
 zou deze partij later
 winnen.]
10.29x18 13x22 11.37-32
8-13 12.41-37 10-14
13.46-41 2-8 14.40-34
22-28 15.32x23 19x28
16.31-27 17-22 17.27x18
13x22 18.43-38 8-13
19.49-43 16-21 20.37-31
21-27 21.44-40 14-19
22.34-30 5-10 23.39-33
28x39 24.43x34 10-14
25.41-37 13-18 26.38-33
18-23 27.34-29 23x34
28.40x29 19-23 29.29x18
12x23 30.33-29 23x34
31.30x39 11-17 32.42-38
6-11 33.39-34 9-13
34.47-42 7-12 35.34-29
14-19 36.35-30 3-8
37.30-24 19x30 38.25x34
13-19 39.34-30 8-13
40.45-40 4-9 41.40-35
9-14 42.48-43 14-20

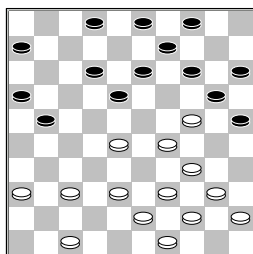


43.30-24?
 [>43.43-39 17-21
A) 44.39-34 12-18
 45.31-26 11-17
 46.38-33 19-23
 47.37-31 23-28
 48.30-25 28x30
 49.25x14 27-32
 50.35x24 21-27
 51.24-19 13x33
 52.14-9 33-39
 53.42-37 32x41
 54.36x47 27x36 55.9-3
 39-44 56.3x21 44-49
 57.21-8
B) 44.31-26 20-24
B1) 45.26x8 24x44
 46.8-2 11-16
 47.37-32 16-21
 48.32-28 22x33
 49.38x29 13-18
 50.2x24 44-50
 51.24-19 21-26
B2) 45.26x6 24x44
 46.6-1 12-17
 (46...13-18 47.1-6
 12-17 48.6-1 19-23
 49.30-24 27-31
 50.36x27 22x31
 51.37x26 44-49

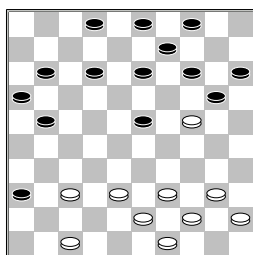
52.1-6 49x16 53.6x14
 16-11) 47.1-7 44-49
 48.7-2 49x46
 49.42-37 46x32
 50.30-24 19x30
 51.2x37 30-34
 52.37-48 27-32
 53.48x25 32-38
 54.25-9 22-27
 55.9x31 38-43=]
43...19x30 44.35x24
 22-28 45.31x33 13-19
 46.24x13 12-18 47.13x22
 17x48 48.29-23 48-34
 0-2

□ Kuipers, T. (Timo)
 ■ Yigitturk, B. (Berke)
 Nationale Clubcomj28-11-2015

1.35-30 20-25 2.40-35
 15-20 3.45-40 20-24
 4.33-29 24x33 5.38x29
 18-22 6.43-38 12-18
 7.38-33 7-12 8.32-28
 16-21 9.30-24 19x30
 10.35x24 21-27 11.42-38
 1-7 12.37-32 10-15
 13.32x21 17x37 14.41x32
 14-20 15.28x17 11x22
 16.46-41 5-10 17.41-37
 10-14 18.50-45 7-11
 19.32-28 11-16 20.28x17
 12x21 21.33-28 8-12
 22.48-43

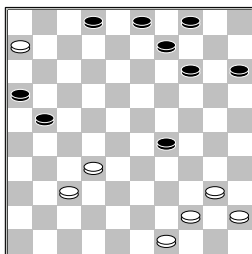


6-11?
 [>22...21-26 23.38-32
 16-21 24.47-42 2-7
 25.28-23 6-11 26.34-30
 (0.05;0.96/8)]
23.28-22 18x27 24.36-31
27x36 25.34-30 25x23



26.38-32
 [>26.40-35 20x29
 27.47-41 36x47
 28.35-30 47x33 29.39x6

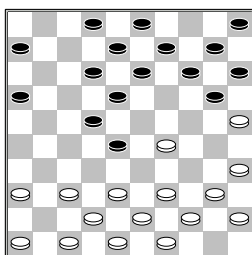
14-19 30.6-1 21-27
 31.1x34 19-23 32.34x36
 9-13 33.36x9 4x13
 (0.98;0.55/9)]
26...20x29 27.47-41
36x47 28.43-38 47x33
29.39x6



29-33
 [>29...14-19 30.40-34
 29x40 31.44x35 21-26
 32.6-1 19-24 33.1-34
 9-14 (0.56;1.00/8)]
30.6-1 21-27 31.32x21
16x27 32.49-43 14-19
33.40-35 19-24 34.35-30
24x35 35.1-6 15-20
36.6x39 27-32 37.37x28
20-24 38.43-38 24-30
39.39x25 9-14 40.25x9
4x13 41.28-22 2-7
42.38-32 13-19 43.45-40
19-23 44.40-34 7-11
45.32-27 3-8 46.27-21
8-12 47.44-39 11-16
48.22-17 16x27 49.17x8
27-31 50.8-3 23-29
51.34x23 31-37 52.3-20
 1-1

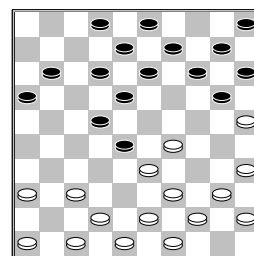
□ Eenennaam, van, F.A. (F)
 ■ Koopmanschap, M. (Maur)
 Nationale Clubcomj28-11-2015

1.34-30 16-21 2.31-26
 11-16 3.36-31 6-11
 4.31-27 18-22 5.27x18
 13x22 6.30-25 9-13
 7.40-34 12-18 8.41-36
 1-6 9.45-40 7-12
 10.50-45 4-9 11.34-29
 22-28 12.33x22 17x28
 13.26x17 11x22 14.32x23
 19x28



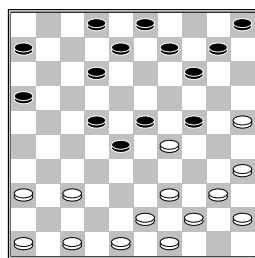
Tot de diagram zijn er
 zetten gespeeld die in de
 database voorkomen. Met

15.38-32 wijkt wit af van
 de bekende paden, slimme
 zet dus blijkt later
 [In de database ging
 het verder met 15.38-33
 6-11



A) 16.42-38 16-21
 17.40-34 11-16
 18.36-31 21-26
 19.37-32 26x37
 20.32x41 16-21
 21.41-37 2-7 22.48-42
 7-11 23.46-41 11-16
 24.45-40 20-24
 25.29x20 15x24
 26.34-29 10-15
 27.29x20 15x24
 28.40-34 21-26
 29.34-29 14-20
 30.25x14 9x20
 31.38-32 20-25
 32.32x23 5-10
 33.29x20 18x38
 34.43x32 25x14 en er
 werd tot remise besloten.
B) Ook gespeeld is de
 volgende partij
 16.37-31 20-24
 17.29x20 15x24
 18.42-38 12-17
 19.40-34 16-21
 20.31-26 8-12
 21.36-31 2-8 22.46-41
 21-27 23.41-36 14-20
 24.25x14 9x20
 25.45-40 18-23
 26.48-42 13-18
 27.34-30 20-25
 28.30x19 23x14
 29.42-37 8-13
 30.37-32 28x37
 31.31x42 14-19
 32.33-29 19-23
 33.29-24 23-28
 34.40-34 3-8 35.34-30
 (beter voor wit was
 natuurlijk 35.38-33
 10-15 36.34-29 5-10
 37.44-40 10-14
 38.24-20 15x24
 39.29x9 13x4 40.33-29
 11-16 41.40-34 4-10
 42.29-24 18-23
 43.42-38 10-15
 44.47-41 12-18

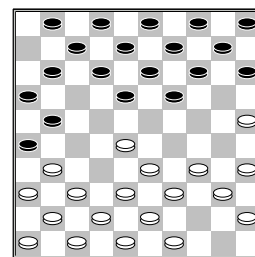
45.38-33 8-13
 46.43-38 28-32
 47.49-43 23-28
 48.35-30 16-21
 49.33-29 13-19
 50.24x13 18x9
 51.30-24 9-13
 52.36-31 27x47
 53.38x9=) 35...25x34
 36.39x30 13-19
 37.24x2 18-23 38.2x32
 28x50 en wit gaf op]
15...13-19 16.32x23
19x28 17.42-38 20-24
18.29x20 15x24 19.38-33
18-23 20.33-29



24x33?
 [Probleemloos voor
 zwart is de volgende
 variant >20...23x34
 21.39x19 (21.40x20
 10-15 22.45-40 15x24
 23.40-34) 21...14x23
 22.35-30 16-21
 23.44-39 12-18
 24.40-34 9-14 25.43-38
 6-11 26.48-43 8-13
 27.45-40 11-17
 28.40-35 3-8 29.38-32
 8-12 30.30-24 10-15
 31.36-31 21-27
 32.32x21 17x26
 33.43-38 12-17
 34.38-32 17-21
 35.47-41 21-27
 36.32x21 26x17
 37.49-43 17-21
 38.41-36 21-26
 39.43-38 2-7 40.38-32
 7-11 41.34-30 13-19
 42.24x13 18x9
A) 43.30-24 9-13
 44.32-27 13-18
 45.35-30 5-10
 46.24-19 11-16
 47.19-13 18x9
 48.27x29 28-32
 49.37x28 26x37
 50.36-31 37x26
 51.30-24 16-21
 52.29-23 9-13
 53.39-33 21-27
 54.23-18 13x22
 55.28x17 26-31
 56.17-12 31-37
 57.12-7 37-42 58.7-1

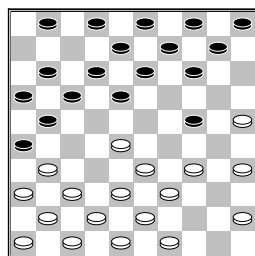
42-48 (58...42-47?
 59.24-20) 59.1-40=
B) 43.32-27 23-29
 44.27x18 29-34
 45.25-20 34x43
 (45...14x25 46.18-12
 34x43 47.12-8 25x34
 48.8-3 9-13 49.37-32
 26x37 50.32x41 34-39
 Met mogelijke winst voor
 zwart.) 46.18-13
 14x34 47.13x4 43-49
 met goede waarschijnlijk
 winnende stand voor
 zwart.]
21.25-20 14x25 22.35-30
25x34 23.40x27 12-17
24.37-32
 [Niet mogelijk is voor
 wit 24.47-41 17-22
 25.27x18 28-32
 26.37x28 33x13=]
24...28x37 25.39x28
17-21 26.27-22 9-13
27.44-39 2-7 28.39-33
7-12 29.45-40 21-26
30.43-38 6-11 31.49-43
12-17 32.40-34 10-14
33.34-29 13-19 34.47-41
37-42 35.38x47
 [Geen optie is
 35.48x37 26-31
 36.37x26 19-23
 37.28x10 17x48 38.10-4
 48-25 39.29-24 nu moet
 wit nog lang zwoegen als
 het uberhaupt wint.]
35...14-20 nu maakt Frans
 het zeer goed af **36.36-31**
26x37 37.41x32 19-24
38.43-39 3-9 39.47-42
5-10 40.42-38 10-15
41.46-41 9-13 42.29-23
20-25 43.41-37 15-20
44.37-31 8-12 45.31-26
24-30 46.22-18 13x22
47.26-21 17x26 48.28x6
30-34 49.39x30 25x34
50.23-19 34-40 51.6-1
40-45 52.1x15 45-50
53.32-28 26-31 54.19-14
31-36 55.14-10
2-0

□ Jong, C.P.M. (Coen)
 ■ Giphart, J. (Hans)
 Nationale Clubcom 28-11-2015
1.34-30 20-25 2.32-28
25x34 3.39x30 16-21
4.44-39 21-26 5.50-44
17-21 6.30-25 11-16
7.40-34 6-11 8.44-40
 (diagram)
12-17 nog nooit gespeeld



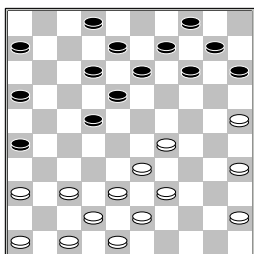
in deze stand
 [8...1-6 9.34-30
 15-20 10.37-32 26x37
 11.42x31 19-23
 12.28x19 14x23
 13.25x14 10x19
 14.40-34 5-10 15.45-40
 10-14 16.30-24 19x30
 17.34x25 13-19
 18.40-34 8-13 19.34-29
 23x34 20.39x30 2-8
 21.30-24 19x30
 22.25x34 later werd deze
 partij remise]
 [8...15-20 9.34-30
 1-6 10.30-24 20x29
 11.33x24 19x30
 12.25x34 14-19
 13.38-33 9-14 14.42-38
 14-20 15.34-30 20-24
 16.40-34 11-17
 17.45-40 18-22
 18.47-42 6-11 19.37-32
 26x37 20.42x31 12-18
 21.31-27 22x31
 22.36x27 18-23
 23.30-25 10-14
 24.48-42 4-9 25.42-37
 7-12 26.34-30 5-10
 27.40-34 2-7 28.41-36
 21-26 29.36-31 17-21
 30.46-41 12-18
 31.49-44 7-12 32.44-40
 10-15 33.28-22 23-28
 34.32x23 19x17
 35.30x10 15x4 36.38-32
 17-22 37.43-38 11-17
 38.34-29 13-19
 39.29-24 19x30
 40.35x24 9-14 41.39-34
 8-13 42.34-29 14-19
 43.40-35 19x30
 44.35x24 3-8 45.41-36
 en zwart gaf op.]
 [8...19-24 9.34-30
 13-19 10.39-34 12-17
 11.37-32 26x37
 12.42x31 7-12 13.31-27
 1-6 14.47-42 21-26
 15.41-37 17-21
 16.34-29 12-17
 17.29x20 15x24
 18.37-31 26x37
 19.42x31 8-13 20.40-34
 10-15 21.31-26 2-8
 22.36-31 18-22
 23.27x18 13x22

24.31-27 22x31
 25.26x37 8-13 26.46-41
 13-18 27.41-36 9-13
 28.34-29 4-9 29.29x20
 15x24 30.45-40 18-23
 31.40-34 13-18
 32.34-29 23x34
 33.30x39 18-23
 34.37-31 21-26
 35.31-27 17-21
 36.39-34 9-13 37.43-39
 11-17 38.49-43 3-8
 39.34-29 23x34
 40.39x30 13-18
 41.43-39 18-23
 42.48-42 8-13 43.42-37
 5-10 44.39-34 13-18
 45.34-29 23x34
 46.30x39 18-23
 47.36-31 10-15
 48.27-22 21-27
 49.32x12 23x34 50.12-7
 24-29 51.33x13 34-39
 52.7-1 39-44 53.13-8
 44-50 54.22-18 50-11
 55.8-2 11-28 uit!
 56.2-19 14x12 57.1x32
]
9.34-29 19-24 10.29x20
15x24 11.40-34 7-12



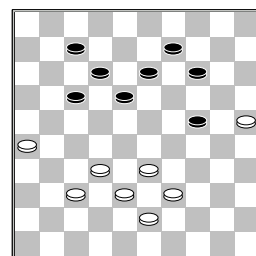
12.34-29
 [De volgende variant
 komt voor in de database
 12.34-30 13-19
 13.37-32 26x37
 14.42x31 21-26
 15.32-27 26x37
 16.41x32 17-21
 17.46-41 18-23
 18.41-37 21-26
 19.47-42 11-17
 20.39-34 8-13 21.34-29
 23x34 22.30x39 17-21
 23.45-40 12-18
 24.40-34 2-8 25.34-30
 18-23 26.39-34 10-15
 27.34-29 23x34
 28.30x39 8-12 29.39-34
 13-18 30.28-22 19-23
 31.22x13 9x18 32.33-28
 23-29 33.34x23 18x29
 34.43-39 3-9 35.39-34
 29x40 36.35x44 9-13
 37.37-31 26x37
 38.42x31 21-26
 39.48-43 26x37

40.32x41 4-10 41.41-37
 14-20 42.25x14 10x19
 43.37-32 12-17
 44.36-31 1-7 45.38-33
 13-18 46.43-39 5-10
 47.49-43 7-12 48.44-40
 17-21 49.31-26 12-17
 50.39-34 10-14
 51.43-39 14-20
 52.27-22 18x29
 53.34x25 24-29
 54.39-34 29-33
 55.28x39 21-27
 56.34-29 27-32 tot
 remise besloten]
12...14-19 13.29x20
19-23 14.28x19 13x15
15.31-27 21x32 16.37x28
10-14 17.41-37 1-6
18.39-34 5-10 19.34-29
8-13 20.49-44 3-8
21.44-39 17-22 22.28x17
11x22

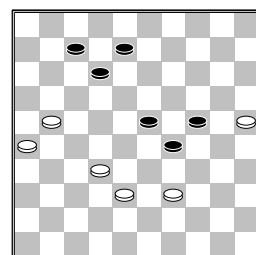


grappig moment beide
 kleuren kunnen spelen op
 het zelfde zetje **23.37-31**
 [23.37-32 6-11
 24.32-28 11-17
 25.45-40 17-21
 26.28x17 18-22
 27.17x28 26-31
 28.36x27 21x45]
 [23.45-40 14-19
 24.40-34 19-23
 25.46-41 6-11 26.34-30
 23x34 27.33-29 34x23
 28.25-20 15x24 29.30x6
]
23...26x37 24.42x31
6-11 25.45-40 11-17
26.40-34 16-21 de
 zwarte positie staat veel
 mooier, maar bereik je er
 iets mee, hoe doorbreek je
 de witte stelling? Lastig
 dus maar blijven spelen op
 een mooie positie zonder
 zwakke momenten. Wachten op
 een mogelijke fout van je
 tegenstander, en die fout
 komt al had ik daar onder
 de partij geen erg in. Wel
 het gevoel dat wit het fout
 deed. **27.31-26 21-27**
28.46-41 13-19 29.29-24
19x30 30.35x24 14-19

31.24x13 8x19 32.41-37
27-31 33.36x27 22x42
34.48x37 9-13 35.37-32
4-9 36.47-42 2-7
37.42-37 10-14 38.34-29
19-24 39.29x20 15x24



40.32-28 Onder de partij
 had ik het gevoel dat deze
 zet fout was, durfde dit
 niet tegen mijn
 tegenstander te zeggen op
 het moment toen hij opgaf.
 Ga niet over 1 nacht ijs.
 [>40.39-34 18-23
 41.37-31 24-30
 42.43-39 17-22
 43.33-29 22-28
 44.29x18 12x23
 45.38-33 28x37
 46.31x42 13-18
 47.42-37 18-22
 48.37-31 9-13 49.31-27
 22x31 50.26x37 13-18
 51.33-29 23-28
 52.29-23 18x40
 53.25x45=]
40...13-19 41.37-31
18-23 42.28-22 17x28
43.33x22 9-13 44.31-27
23-29 45.27-21 13-18
46.22x13 19x8 47.38-32
14-19 48.43-38 19-23



49.39-33? beslissende
 fout onder druk.
 [remise is >49.25-20
 24x15 50.21-17 12x21
 51.26x17 15-20
 52.32-27 20-25
 53.27-21 25-30
 54.21-16 30-35
 55.17-11 7-12 56.11-6
 35-40 57.16-11]
49...29-34 En nu is het
 uit **50.33-28 23-29**
51.28-22 34-40 52.32-28
40-45 53.22-17 45-50

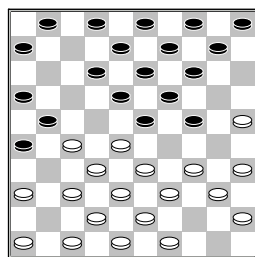
54.28-22 50-45 55.21-16
 12x21 56.26x17 24-30
 0-2 (0.01/0.07)

Malahé, P.M. (Pertap)

Groot, H.M. (Henk)

Nationale Clubcom 28-11-2015

1.34-30 20-25 2.32-28
 25x34 3.39x30 18-23
 4.37-32 12-18 5.41-37
 7-12 6.44-39 17-21
 7.31-27 15-20 8.30-25
 20-24 9.50-44 21-26
 10.40-34 11-17 11.44-40
 17-21



12.34-29

[In de database komt de volgende variant voor

12.34-30 10-15
 13.39-34 1-7 14.34-29
 23x34 15.40x20 15x24
 16.43-39 18-23
 17.39-34 12-18
 18.27-22 18x27
 19.37-31 26x37
 20.42x22 5-10 21.47-42
 7-11 22.46-41 11-17
 23.22x11 16x7 24.34-29
 23x34 25.30x39 8-12
 26.41-37 12-18
 27.37-31 18-23
 28.31-27 21-26
 29.36-31 26x37
 30.42x31 10-15
 31.49-44 14-20
 32.25x14 9x20 33.44-40
 20-25 34.31-26 4-9
 35.27-21 3-8 36.48-43
 13-18 37.21-16 9-13
 38.28-22 18x27
 39.32x21 8-12 40.21-17
 12x21 41.16x27 2-8
 42.40-34 7-12 43.26-21
 13-18 44.38-32 8-13
 45.33-28 12-17
 46.21x12 18x7 47.28-22
 24-30 48.35x24 19x30
 49.43-38 15-20
 50.38-33 20-24
 51.33-28 13-19
 52.22-17 24-29
 53.28-22 29x40
 54.45x34 19-24
 55.17-12 7x18 56.22x13
 24-29 en hier werd tot
 remise besloten.]

12...23x34 13.40x20
 10-15 14.45-40 15x24
 15.40-34 24-30 16.35x24
 19x30 17.34-29 30-35
 18.49-44 14-19 19.29-24
 19x30 20.25x34 1-7
 21.33-29 5-10 22.38-33
 10-14 23.29-24 7-11
 24.42-38 12-17 25.47-42
 14-19 26.37-31 19x30
 27.34x25 26x37 28.42x31
 18-22 29.27x18 13x22
 30.31-27 22x31 31.36x27
 8-13 32.25-20 21-26
 33.27-21 16x27 34.32x12
 2-8 35.28-23 8x17
 36.46-41 11-16 37.39-34
 16-21 38.41-37 6-11
 39.34-29 11-16 40.20-15
 13-18 41.23x12 17x8
 42.43-39 21-27 43.33-28
 27-31 44.39-33 31x42
 45.38x47 16-21 46.29-23
 21-27 47.33-29 26-31
 48.48-42 9-13 49.29-24
 13-18

[Beter voor zwart is

49...3-9 50.24-20
 31-36 51.42-37 8-12
 52.37-31 13-18
 53.31x13 9x29 54.28-23
 29x18 55.20-14 18-23
 56.14-10 12-17
 57.44-39 23-29 58.10-5
 35-40 59.5-28 17-21
 60.39-34 40-45
 61.34x23 45-50
 62.28-37 4-10 63.15x4
 21-27 64.4x31 36x27=
]

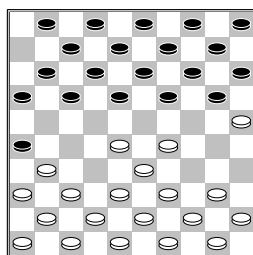
50.23x12 8x17 51.24-20
 3-9 52.28-23 17-22
 53.23-19 31-37 54.42x31
 27x36 55.19-14 9-13
 56.14-10 22-28 57.10-5
 28-33 58.5-19 13x24
 59.20x38
 2-0

Houwing, J. (Jan)

Bidesi, R.P. (Roy)

Nationale Clubcom 28-11-2015

1.35-30 17-21 2.30-25
 21-26 3.34-29 11-17
 4.32-28 6-11



5.37-32

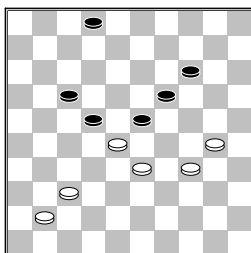
[In de database komt de volgende variant voor

5.40-34 19-23 6.28x19
 14x23 7.25x14 10x19
 8.29-24 19x30 9.34x25
 1-6 10.31-27 5-10
A) 11.45-40 10-14
 (11...17-22 12.39-34
 22x31 13.36x27 10-14
 14.40-35 13-19
 15.43-39 11-17
 16.34-30 17-21
 17.37-32 8-13
 18.30-24 19x30
 19.25x34 14-19
 20.49-43 9-14
 21.34-30 15-20
 22.39-34 4-9 23.33-29
 20-24 24.29x20 14x25
 25.38-33 9-14
 26.43-38 2-8 27.48-43
 7-11 28.33-29 14-20
 29.27-22 18x27
 30.29x9 3x14 31.44-39
 12-18 32.39-33 11-17
 33.33-29 17-22
 34.43-39 18-23
 35.29x18 22x13
 36.39-33 13-18
 37.33-29 18-22
 38.50-44 19-23
 39.29x18 22x13
 40.44-39 14-19
 41.39-33 6-11
 42.33-29 11-17
 43.41-37 13-18
 44.38-33 27x38
 45.30-24 19x28
 46.42x2 17-22 47.2-24
 w+) 12.39-34 14-19
 13.34-30 17-21
 14.40-34 21x32
 15.38x27 11-17
 16.34-29 23x34
 17.30x39 17-21
 18.42-38 21x32
 19.38x27 18-22
 20.27x18 13x22
 21.33-28 22x33
 22.39x28 7-11
B) 11.38-32 9-14
 (11...10-14 12.45-40
 14-19 13.40-35 15-20
 14.25x14 9x20
 15.35-30 17-21
 16.39-34 11-17
 17.33-29 20-25
 18.44-39 17-22
 19.43-38 22x31
 20.36x27 4-9 21.39-33
 6-11 22.33-28 11-17
 23.38-33 9-14
 24.30-24 19x39
 25.28x10 39x28
 26.32x23 21x32
 27.37x28 3-9 28.10-4
 18-22 29.29-24 22x33

30.24-19 13x24
 31.4x6) 12.45-40
 17-22 13.40-34 22x31
 14.36x27 11-17
 15.44-40 4-9 16.40-35
 7-11 17.43-38 23-28
 18.32x23 18x40
 19.35x44 12-18
 20.37-32 Later werd het
 remise.]
5...26x37 6.42x31 19-23
7.28x19 14x34 8.40x29
1-6 9.25x14 10x19
10.41-37 5-10 11.44-40
 [11.46-41 17-21
 12.31-26 21-27
 13.32x21 16x27
 14.38-32 27x38
 15.43x32 18-23
 16.29x18 12x23
 17.47-42 10-14
 18.42-38 13-18
 19.26-21 9-13 20.21-16
 8-12 21.49-43 4-9
 22.44-40 14-20
 23.40-34 9-14 24.45-40
 3-9 25.50-45 11-17
 26.40-35 7-11 27.16x7
 2x11 28.33-28 20-24
 29.48-42 15-20
 30.36-31 11-16
 31.31-27 17-21
 32.34-30 20-25
 33.38-33 25x34
 34.39x30 21-26
 35.42-38 6-11 36.30-25
 11-17 37.43-39 17-21
 38.41-36 12-17
 39.45-40 17-22
 40.28x17 21x12
 41.33-28 12-17
 42.38-33 24-29
 43.33x24 19x30
 44.28x10 17-22
 45.35x24 22x42 46.10-5
 42-48 47.40-34 26-31
 48.36x27 48-26 49.5-28
 26-3 50.28-6 3-12
 51.34-29 9-14 52.6-28
 13-19 53.24x22 12x43
 54.28x5 16-21 55.27x16
 43x4=]

11...10-14 nu volgt een
 gevecht om het centrum
 waarin beide spelers het
 centrum willen bijven
 bezeten dus! **12.50-44**
17-21 13.31-26 21-27
14.32x21 16x27 15.37-31
18-22 16.38-32 27x38
17.43x32 13-18 18.48-43
15-20 19.46-41 19-24
20.41-37 14-19 21.32-28
20-25 22.29x20 25x14
23.28x17 11x22 24.37-32
9-13 25.43-38 7-11
26.49-43 11-17 27.40-34

4-10 28.44-40 6-11
29.31-27 22x31 30.36x27
17-22 31.32-28 22x31
32.26x37 19-23 33.28x19
14x23 34.34-29 23x34
35.40x29 11-17 36.38-32
10-14 37.45-40 14-19
38.40-35 19-23 39.47-41
23x34 40.39x30 3-9
41.30-24 9-14 42.35-30
17-22 43.32-28 12-17
44.43-39 13-19 45.24x13
8x19 46.39-34 18-23



47.30-25
 [47.30-24 19x39
 48.28x10 39x28 49.10-5
 (49.10-4 28-33 50.4x27
 33-39 51.27-49 17-21
 52.49x16 39-44=)
 49...28-32 50.37x28
 22x33=]
47...23x32
1-1