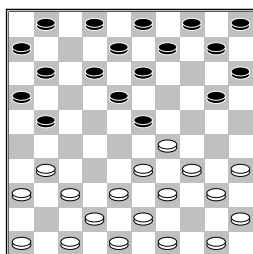


□ Groot,de,G.J. (Gerard)
 ■ Bruin,de,G.R. (Gideon)
 Nationale Clubcomj30-01-2016

1.32-28 18-23 2.33-29
 23x32 3.37x28 17-21
 4.39-33 12-18 5.44-39
 7-12 6.41-37 19-23
 7.28x19 14x23



8.35-30?

[8.50-44 10-14
 9.35-30 1-7 10.40-35
 14-19 11.38-32 21-26
 12.43-38 11-17
 13.44-40 17-22
 14.31-27 22x31
 15.36x27 20-24
 16.29x20 15x24
 17.49-44 5-10 18.30-25
 10-14 19.34-30 4-10
 20.33-28 10-15
 21.39-33 7-11 22.44-39
 2-7 23.46-41 14-20
 24.25x14 19x10
 25.30x19 23x14
 26.41-36 14-19
 27.39-34 19-24
 28.28-23 18x29
 29.34x23 10-14
 30.40-34 24-29
 31.33x24 14-19
 32.23x14 9x40 33.45x34
 13-19 met later remise
]
 [8.47-41 1-7
 9.50-44 21-26 10.33-28
 23x32 11.37x28 26x37
 12.41x32 10-14
 13.39-33 16-21
 14.44-39 5-10 15.46-41
 21-26 16.41-37 20-24
 17.29x20 15x24
 18.34-29 14-20
 19.40-34 10-15
 20.34-30 11-17
 21.30x19 13x24
 22.49-44 7-11 23.28-22
 18x27 24.32x21 17-22
 25.21-16 12-17 26.16x7
 2x11 27.38-32 11-16
 28.32-27 22x31
 29.36x27 8-13 30.27-22
 17x28 31.33x22 24x33
 32.39x28 13-18
 33.22x13 9x18 34.35-30
 deze partij werd later

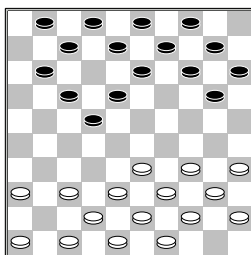
remise]
 [8.37-32 1-7
 9.46-41 20-25 10.41-37
 21-26 11.50-44 10-14
 12.33-28 5-10 13.28x19
 13x33 14.39x28 9-13
 15.44-39 11-17
 16.38-33 4-9 17.43-38
 7-11 18.49-43 14-20
 19.34-29? 25-30
 20.35x24 18-23 21.29x7
 20x29 22.33x24 8-12
 23.7x18 13x35 beide
 partijen in de database
 werden gewonnen door zwart
]

8...23-28!

0-2

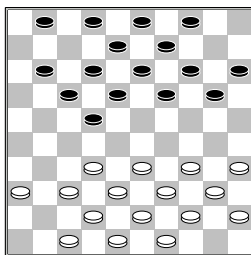
□ Nollet,H.F. (Huub)
 ■ Bremmer,W. (Wim)
 Nationale Clubcomj30-01-2016

1.32-28 19-23 2.28x19
 14x23 3.33-28 23x32
 4.37x28 10-14 5.41-37
 5-10 6.39-33 16-21
 7.44-39 21-26 8.37-32
 26x37 9.32x41 17-22
 10.28x17 11x22 11.50-44
 6-11 12.41-37 12-17



13.46-41

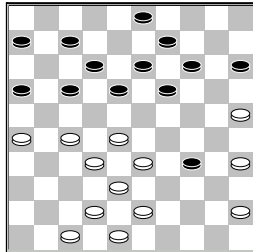
[In de database van
 TDAM komt de volgende
 variant voor 13.37-32
 7-12 14.46-41 14-19
 15.41-37 10-14



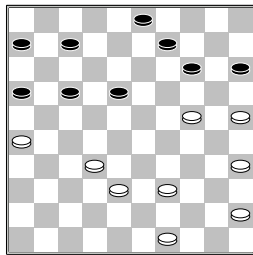
A) 16.33-28 22x33
 17.39x28 1-6 18.44-39
 17-22 19.28x17 11x22
 20.39-33 19-23
 21.43-39 14-19
 22.49-43 9-14
 23.47-41 2-7 24.32-28
 23x32 25.37x17 12x21

26.33-28 21-26
 27.41-37 7-11 met
 remise
 B) 16.32-28 4-10
 17.37-32 22-27
 18.32x21 17x26
 19.38-32 19-23
 20.28x19 14x23
 21.43-38 (21.34-29
 23x34 22.40x29 2-7
 23.42-37 20-25
 24.43-38 10-14
 25.32-28 11-17
 26.49-43 17-22
 27.28x17 12x21
 28.33-28 7-12
 29.39-33 14-20
 30.44-40 1-7 31.37-32
 21-27 32.32x21 26x17
 33.40-34 13-19?
 34.28-22 17x30
 35.35x11) 21...10-14
 22.35-30 14-19
 23.40-35 11-17
 24.33-29 17-22
 25.39-33 12-17
 26.44-39 1-6 27.48-43
 6-11 28.30-24 19x30
 29.34x14 9x20
 30.32-27 22x31
 31.36x27 23x34
 32.39x30 8-12
 33.30-25 20-24
 34.33-28 3-9 35.45-40
 11-16 36.40-34 2-8
 37.38-32 9-14
 38.43-38 13-19
 39.42-37 17-21
 40.34-30 18-23
 41.49-44 12-17
 42.44-39 15-20
 43.38-33 23-29
 44.28-23 29x38
 45.32x43 21x41
 46.47x36 19x28
 47.30x10 28-32
 48.25x14 32-37
 49.10-4 37-42 50.4-15
 42-48 en zwart gaf op
]
 13...8-12 14.33-28
 22x33 15.39x28 14-19
 16.44-39 10-14 17.37-32
 18-23 18.41-37 12-18
 19.39-33 20-24 20.37-31
 2-8 21.31-27 11-16
 22.36-31 15-20 23.31-26
 8-12 24.34-30 4-10
 [Wim gaf na afloop de
 volgende variant aan.
 Gisteren op het moment dat
 hij de variant liet zien
 stond schijf 43 of 39, wat
 de cominatie winnend maakt
 maar ik krijg de goede
 variant niet op het bord.
 24...7-11 25.30-25 1-6

26.47-41 24-29
 27.33x15 4-10 28.15x4
 14-20 29.25x14 19x10
 30.28x8 10-15 31.4x22
 17x46 32.8x17 11x31
 33.26x37 46x28]
25.43-39 10-15 26.30-25
24-29 27.33x24 20x29
28.39-33 29-34 29.40x29
23x34 30.49-43 1-6



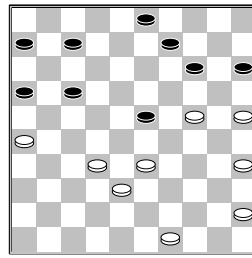
31.43-39 nu krijgt wit problemen
 [Beter voor wit is
 31.47-41 15-20
 (31...19-24 32.35-30
 24x35 33.33-29 34x23
 34.28x8 17-21 35.26x17
 12x21 36.8-2 15-20
 37.2x11 6x17) 32.35-30
 20-24 33.30x39 24-29
 34.33x24 19x30
 35.25x34 18-22
 36.27x18 13x44
 37.43-39 44x33
 38.38x29]
31...34x43 32.38x49
19-24 33.48-43 24-29
34.33x24 18-22 35.27x18
13x33 36.42-38 33x42
37.47x38 12-18 38.43-39



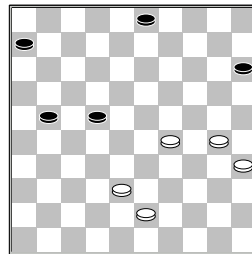
18-23
 [Beter voor zwart is
 38...14-20 39.25x14
 9x29 40.45-40 7-11
 41.39-33 3-9 42.33x24
 17-21 43.26x17 11x22
 44.24-19 9-14 45.19x10
 15x4 en zwart heeft een
 zeker gewonnen positie.
]
39.39-33

(diagram)

14-20
 [Een andere optie is

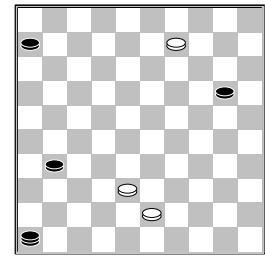


39...23-29 40.24-19
 14x23 41.33x24 7-11
 42.45-40 17-21
 43.26x17 11x22
 44.40-34 6-11 45.38-33
 22-27 46.32x21 16x27
 47.34-30 23-29
 48.33-28 (48.24-20
 29x38 49.20-14 9x20
 50.25x14) 48...29x20
 49.25x14 9x20 +]
40.25x14 9x29 41.33x24
7-11 42.45-40 17-21
43.26x17 11x22 44.40-34
16-21
 [44...22-27 45.32x21
 16x27 46.34-30 23-29
 47.24x33 27-31
 48.38-32 31-36
 49.33-29 6-11 50.29-24
 36-41 51.32-28 11-17
 52.49-44 17-21
 53.28-23 21-27
 54.23-18 41-46=]
45.49-43 22-27 46.34-30
23-29 47.24x33 27-31
48.32-27 31x22 49.33-29

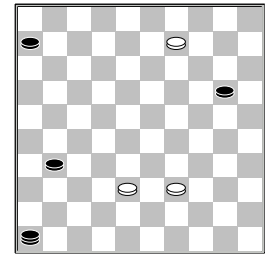


22-27
 [49...21-27 50.29-24
 27-31 51.24-20 15x24
 52.30x19 3-9 53.35-30
 31-36 54.30-25 36-41
 55.25-20 41-46
 56.20-14 9x20 57.19-13
 20-25 58.38-33 22-27
 59.13-8 27-31 60.8-2
 31-36 61.43-39 46-23
]
50.29-24 27-31 51.24-20
15x24 52.30x19 3-9
53.35-30 31-36 54.30-25
36-41 55.25-20 41-46
56.20-14 9x20 57.19-13
21-26 58.13-9 26-31

(diagram)

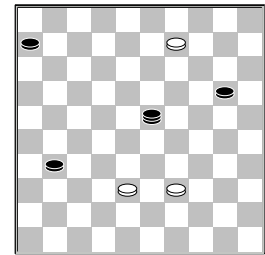


59.43-39

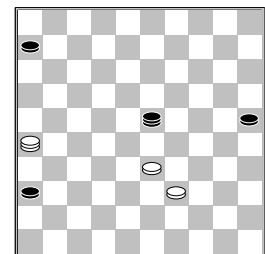


is tempo verlies
 [Beter is >59.9-3
 20-25 60.3-26 31-36
 61.26-8 46-14 62.8-26
 14-19 63.26-48 25-30
 64.38-32 19x46
 65.48-42]

59...46-23

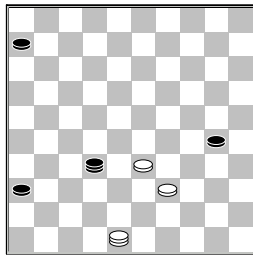


[beter voor zwart is
 >59...31-36 60.39-34
 46-19 61.9-4 36-41
 62.34-29 41-46 63.4-9
 20-25 64.9-4 19-37]
60.38-33 31-36 61.9-3
20-25 62.3-26



25-30

[beter voor zwart is
 >62...23-41 63.33-29
 41-47 64.26-37 47x15
 65.39-34 6-11 66.37-48
 15-24]
63.26-48 23-32
64.39-34??

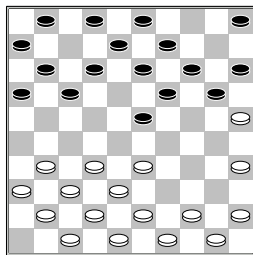


[remise is >64.33-28
32x5 65.39-34 30x39
66.48x34
(-0.07;-9.99/15)]

64...30x28
0-2

□ Malahé,P.M. (Pertap)
■ Tjokro,V. (Valentino)
Nationale Clubcomj30-01-2016

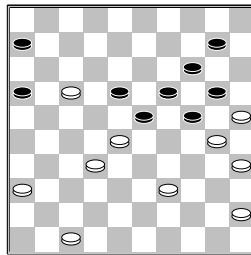
1.32-28 19-23 2.28x19
14x23 3.37-32 10-14
4.34-30 14-19 5.30-25
9-14 6.33-29 23x34
7.40x29 4-9 8.39-33
18-23 9.29x18 12x23
10.41-37 7-12 11.46-41



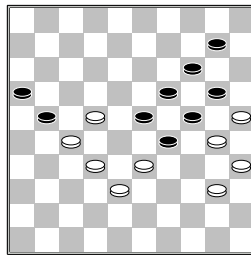
2-7

[In de data base van
TDAM komt de volgende
variant voor: 11...1-7
12.44-39 12-18
13.50-44 7-12 14.44-40
20-24 15.32-28 23x32
16.37x28 17-21
17.41-37 21-26
18.37-32 26x37
19.32x41 11-17
20.41-37 17-21
21.37-32 21-26
22.42-37 2-7 23.47-42
7-11 24.40-34 11-17
25.34-30 18-23
26.36-31 12-18
27.31-27 17-21
28.49-44 8-12 29.44-40
12-17 30.39-34 5-10
31.43-39 15-20
32.48-43 3-8 33.34-29
23x34 34.40x29 17-22
35.28x17 21x12
36.32-28 12-17
37.38-32 17-22
38.28x17 18-23
39.29x18 13x31
40.42-38 31x42

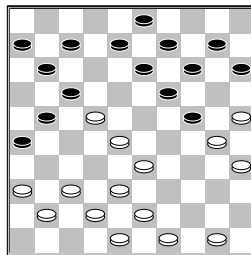
41.38x47 9-13 42.32-27
13-18 43.43-38 18-23
44.38-32 8-13 45.33-28
26-31 46.27x36 13-18



47.17-12? (47.36-31
18-22 48.45-40 22x44
49.40x49 23-29
50.17-12 16-21 en wit
wint) 47...18x7
48.36-31 7-12 49.47-42
12-18 50.39-33 16-21
51.42-38 6-11 52.31-27
11-16 53.45-40 23-29
54.28-22 18-23



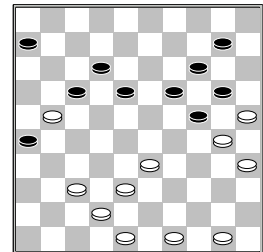
55.40-34? (55.33-28
10-15 56.38-33 29x38
57.32x43 23x32
58.27x38 21-26
59.22-18 26-31=)
55...29x40 56.35x44
24x35]
12.44-39 20-24 13.32-28
23x32 14.37x28 12-18
15.45-40 7-12 16.40-34
1-7 17.34-30 17-21
18.41-37 21-26 19.28-22
18x27 20.31x22 16-21
21.33-28 5-10 22.39-33
12-17 23.47-41



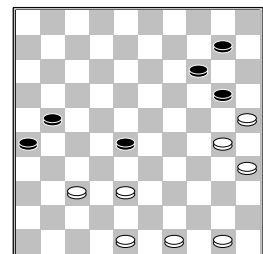
7-12?
[een andere optie voor
zwart is: >23...8-12
24.50-45 3-8 25.45-40
12-18 26.40-34 18x27
27.25-20 14x25

28.28-22 17x39
29.38-33 39x28
30.36-31 27x38 31.43x1
en wit heeft een goed
stand]

24.22-18 12x32 25.38x7
8-12 26.7x18 13x22
27.37-32 9-13 28.32-27
22x31 29.36x27 13-18
30.43-38 3-8 31.41-37
8-12 32.27-21 15-20



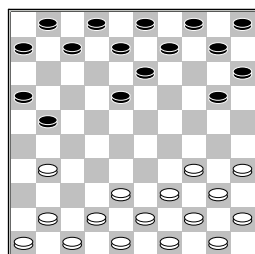
33.33-28
[Een andere optie voor
wit is 33.33-29 24x33
34.38x29 10-15
35.30-24 19x30
36.35x24 17-22
37.24-19 14x34
38.25x14 26x17 39.14-9
met een winst positie.]
33...18-23 34.38-32
6-11 35.21-16 17-21
36.16x29 24x22 37.42-38
22-28 38.32x23 19x28



39.49-44?
[>39.30-24 20x29
40.38-32 28-33
41.35-30 21-27
42.32x21 26x17
43.50-44 17-21
44.49-43 met goede stand
voor wit]
39...21-27! 40.38-33
28x39 41.44x33 27-32
42.37x28 20-24 43.30x19
14x32 44.33-29 32-37
45.29-23 37-41 46.23-18
41-46 47.18-12 10-15
48.12-8 26-31 49.8-2
31-36 50.2-24 46-14
51.24-47 14-5 52.48-43
5-14 53.43-39 14-5
54.50-44 5-28 55.47-33
28-5 56.33-24 36-41
57.25-20 41-47
1-1

Tong Sang,R. (Ricardo)
 Dee, van,H. (Hein)
 Nationale Clubcomj30-01-2016

1.32-28 17-21 2.31-26
19-23 3.28x19 14x23
4.26x17 11x22 5.33-28
23x32 6.37x17 12x21
7.36-31



7-12
 [in de database
 bevinden zich de volgende
 partijen 7...10-14
 8.31-26 7-12 9.26x17
 12x21 10.39-33
 (10.38-32 5-10
 11.43-38 1-7 12.49-43
 7-12 13.39-33 6-11
 14.44-39 11-17
 15.50-44 17-22
 16.41-36 22-27
 17.42-37 20-24
 18.47-42 21-26
 19.32x21 26x17
 20.38-32 17-21
 21.43-38 14-19
 22.36-31 10-14
 23.46-41 12-17
 24.31-26 18-22)
 10...14-19 11.44-39
 5-10 12.41-37 10-14
 13.34-30 1-7 14.30-25
 20-24 15.40-34 24-30
 16.35x24 19x30
 17.50-44 7-12 18.44-40
 2-7]

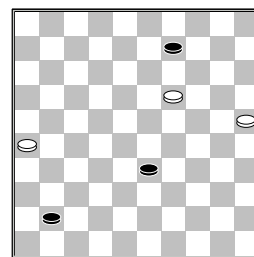
8.35-30 20-25
 [De database komt met
 de volgende zetten reeks
 8...6-11 9.41-37 11-17
 10.31-26 10-14
 11.46-41 4-10 12.37-31
 14-19 13.30-24 20x29
 14.34x14 10x19
 15.41-36 5-10 16.38-32
 10-14 17.42-38 15-20
 18.39-33 20-24
 19.44-39 18-23
 20.50-44 12-18
 21.47-42 1-6 22.40-34
 8-12 23.33-29 24x33
 24.39x28 2-7 25.31-27
 7-11 26.36-31 3-8
 27.44-39 23-29
 28.34x23 18x29
 29.45-40 19-24

30.39-33 14-20
 31.43-39 20-25
 32.42-37 9-14 33.40-35
 24-30 34.35x24 29x20
 35.33-29 25-30
 36.38-33 20-25
 37.48-43 14-20
 38.43-38 30-35
 39.49-44 13-19
 40.29-23 19-24
 41.23-18 12x23
 42.28x30 25x43
 43.38x49 8-13 44.33-29
 13-18 45.49-43 20-24
 46.29x20 18-23
 47.27-22 17x28
 48.26x17 11x22
 49.43-39 16-21
 50.20-14 6-11 51.14-10
 11-16 52.10-5 21-26
 53.5-10 16-21 54.10-15
 21-27 55.32x21 26x17
 56.39-34 35-40
 57.44x35 17-21
 58.15-29 21-27
 59.29x18 +]

9.30-24 10-14 10.38-33
5-10 11.42-38 1-7
12.31-26 7-11 13.26x17
11x22 14.41-37 14-20
15.46-41 20x29 16.33x24
13-19 17.24x13 8x19
18.39-33 9-13 19.44-39
2-8 20.50-44 4-9
21.37-32 10-14 22.32-28
14-20 23.28x17 12x21
24.41-37 20-24 25.48-42
8-12 26.40-35 6-11
27.34-30 25x34 28.39x30
18-23 29.44-40 12-18
30.30-25 15-20 31.25x14
9x20 32.40-34 21-27
33.49-44 20-25 34.33-29
24x33 35.38x29 11-17
36.44-39 19-24 37.29x20
25x14 38.35-30 14-20
39.45-40 13-19 40.43-38
20-25 41.40-35 17-22
42.30-24 19x30 43.35x24
16-21 44.39-33 21-26
45.34-29 23x34 46.33-28
22x33 47.38x40 18-23
48.40-34 23-28 49.47-41
3-9 50.24-19 27-32
51.34-29 25-30 52.29-24
26-31 53.37x26 28-33
54.24x35 32-38 55.35-30
38x36 56.30-25 36-41

(diagram)

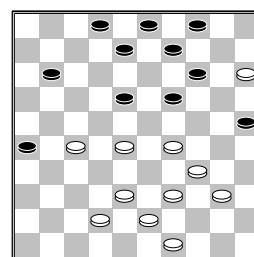
57.19-14 deze stand komt
 voor in de eindspeldatabase
 en eindigde in remise
1-1



Yigitturk,B. (Berke)
 Mathoera,B. (Boike)
 Nationale Clubcomj30-01-2016

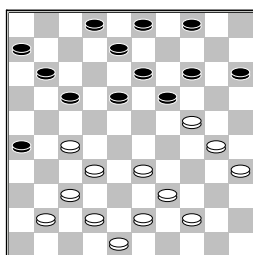
1.33-29 19-24 2.39-33
17-21 3.44-39 21-26
4.50-44 14-19 5.32-28
20-25 6.29x20 25x14
7.37-32 26x37 8.42x31
16-21 9.41-37 21-26
10.34-30 11-17 11.40-34
7-11 12.44-40 1-7
13.30-24 19x30 14.35x24
14-19

[In de database komt de
 volgende partij voor
 14...17-22 15.28x17
 11x22 16.34-29 14-20
 17.40-34 22-27
 18.31x22 18x27
 19.32x21 26x17
 20.37-32 12-18
 21.45-40 10-14
 22.46-41 7-12 23.41-37
 20-25 24.24-20 15x24
 25.29x20 14-19
 26.20-15 5-10 27.47-42
 17-21 28.32-28 21-26
 29.37-32 18-22
 30.28x17 12x21
 31.32-28 6-11 32.36-31
 26x37 33.42x31 21-26
 34.31-27 10-14
 35.48-42 13-18
 36.33-29

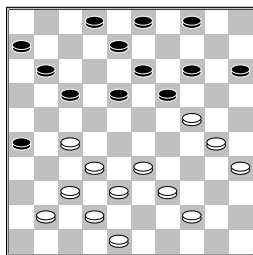


19-23 37.28x10 9-14
38.10x19 25-30
39.34x25 18-22
40.27x18 8-13 41.18x9
4x35 w+]
15.40-35 19x30 16.35x24
10-14 17.49-44 14-19
18.34-30 17-22 19.28x17
11x22 20.47-42 7-11
21.45-40 5-10 22.40-35
10-14 23.31-27 22x31

24.36x27 14-20 25.46-41
 20x29 26.33x24 9-14
 27.38-33 12-17



28.43-38?



[>28.41-36 8-12
 29.33-28 3-8 30.30-25
 19x30 31.25x34 15-20
 32.34-30 17-22
 33.28x17 11x31
 34.36x27 14-19
 35.32-28]

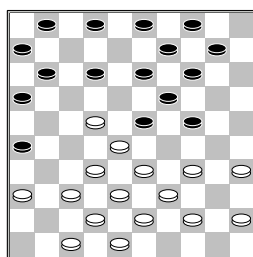
28...8-12?

[>28...18-22 29.27x20
 8-12 30.24x13 15x24
 31.30x19 26-31
 32.37x26 12-18
 33.13x22 17x46]

29.33-28 3-8 30.27-22
 18x27 31.32x21 17-22
 32.28x17 11x22 33.21-16
 13-18 34.24x13 8x19
 35.38-33 2-7 36.30-24
 19x30 37.35x24 14-19
 38.24x13 18x9 39.37-32
 6-11 40.32-28 11-17
 41.28-23 9-14 42.33-28
 22x33 43.39x28 4-9
 44.41-37 9-13 45.37-32
 15-20 46.44-40 13-18
 47.23-19 14x23 48.28x19
 17-22 49.42-37 12-17
 50.40-34 18-23 51.19x28
 22x33 52.32-27 33-38
 53.34-29 7-12 54.27-22
 17x28 55.16-11 28-32
 56.37x28 12-17 57.11x22
 26-31 58.22-17 31-37
 59.17-12 37-41 60.12-7
 41-46 61.29-23 20-24
 1-1

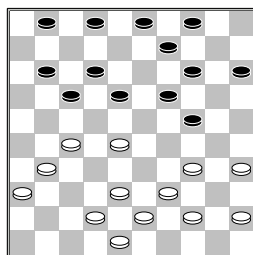
□ Zijlstra, B. (Bert)
 ■ Giphart, J. (Hans)
 Nationale Clubcom 30-01-2016

1.32-28 20-25 2.37-32
 14-20 3.41-37 10-14
 4.46-41 5-10 5.34-30
 25x34 6.39x30 20-25
 7.44-39 25x34 8.40x29
 19-24 9.29x20 15x24
 10.50-44 17-21 11.31-27
 21-26 12.44-40 13-19
 13.40-34 8-13 14.49-44
 18-23 15.36-31 12-18
 16.41-36 7-12 17.27-22
 18x27 18.31x22



11-17

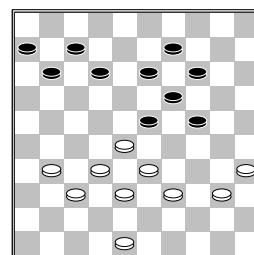
[in de database van
 TDAM kwam de volgende
 partij voor 18...12-18
 19.37-31 26x37
 20.42x31 18x27
 21.31x22 11-17
 22.22x11 6x17 23.44-40
 10-15 24.47-42 2-8
 25.42-37 17-21
 26.36-31 1-7 27.34-29
 23x34 28.40x20 15x24
 29.39-34 13-18
 30.34-29 7-12 31.29x20
 14x25 32.43-39 19-24
 33.39-34 4-10 34.45-40
 9-13 35.34-29 13-19
 36.29x20 25x14
 37.40-34 3-9 38.48-42
 19-24 39.31-27 21-26
 40.28-22 9-13 41.34-30
 12-17 met remise]
 19.22x11 16x7 20.37-31
 26x37 21.32x41 23x32
 22.38x27 13-18 23.42-38
 6-11 24.41-37 11-17
 25.47-42 10-15 26.37-31
 7-11 27.33-28



9-13

[Geen goed voor zwart
 is 27...18-23 vanwege
 28.28-22 17x28
 29.35-30 24x35
 30.44-40 35x33

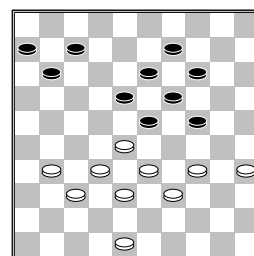
31.38x16 en er zijn weer
 een paar schijven van het
 bord verdwenen dus gunstig
 voor wit om zijn doel,
 1-1, te bereiken.]
 28.27-22 18x27 29.31x22
 3-9 30.28-23 17x28
 31.23x32 13-18 32.34-29
 24x33 33.39x28 wit
 heeft 3 tempo in de plus
 dus op naar een klassieke
 stand 15-20 34.42-37
 20-24 35.43-39 9-13
 36.39-33 4-9 37.44-39
 18-23 38.45-40 1-6
 39.36-31 2-7



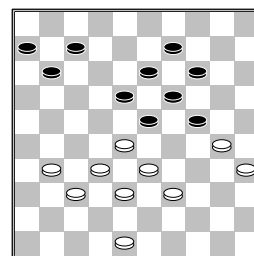
40.40-34

[40.31-27? 24-29
 41.33x24 19x30
 42.28x17 11x44]

40...12-18



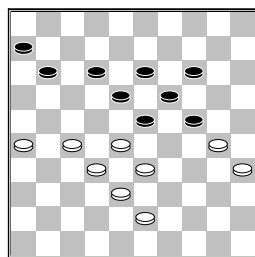
41.34-30



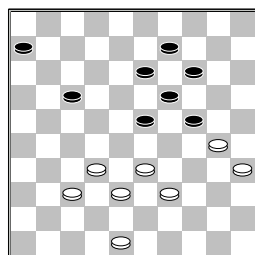
[41.48-43 7-12
 42.34-29 23x34
 43.39x30 18-23
 44.31-27 13-18
 45.37-31 9-13 46.31-26

(diagram)

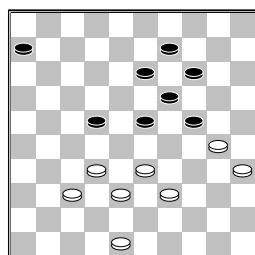
deze stand komt voor in de
 database, het ging toen
 verder met 11-16
 47.30-25 6-11 48.43-39



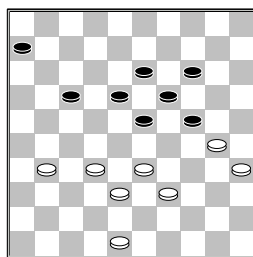
11-17 49.39-34 23-29
 50.34x23 18x29
 51.35-30 24x35
 52.33x24 19x30
 53.25x34 13-19
 54.27-21 16x27
 55.32x21 19-24
 56.28-22 17x28
 57.21-17 12x21
 58.26x17 24-30
 59.34x25 35-40
 60.17-12 40-44 61.12-8
 remise]
41...18-22 42.28x17
11x22 43.31-26 7-12
44.37-31 12-17 45.31-27
22x31 46.26x37



13-18
 [46...17-22



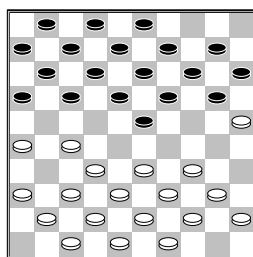
deze stand komt voor in de
 database 47.39-34
 22-27 (47...6-11
 48.48-42 22-27
 49.32x21 23-28
 50.33x22 24-29
 51.34x23 19x26)
 48.32x21 23-28
 49.33x22 24-29
 50.34x23 19x26
 51.30-24 6-11 52.38-32
 11-17 53.32-27 13-18
 54.24-20 14x25
 55.27-21 25-30
 56.21x23 30-34]
47.37-31 9-13
48.32-27?



[>48.33-28 18-22
 49.32-27 23x25
 50.27x29 19-24
 51.29x20 25x14
 52.31-26 6-11 53.48-43
 17-22]
48...17-21 49.27x16
23-28 50.33x22 18x36
51.39-33 13-18 52.33-28
36-41 53.38-32 41-46
54.48-42 6-11 55.16x7
18-22 56.28x17 46x2
0-2

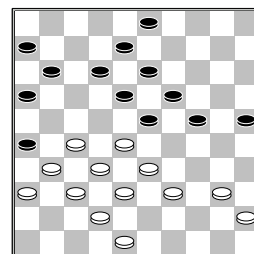
□ Bidesi,R.P. (Roy)
 ■ Sluisdom,C.L. (Cyril)
 Nationale Clubcom30-01-2016

1.34-29 19-23 2.40-34
 14-19 3.45-40 10-14
 4.50-45 20-25 5.31-26
 14-20 6.37-31 20-24
 7.29x20 25x14 8.35-30
 14-20 9.30-25 9-14
 10.41-37 4-9 11.46-41
 5-10 12.31-27



17-21
 [In de database komt de
 volgende variant voor
 12...20-24 13.40-35
 24-30 14.35x24 19x30
 15.44-40 30-35
 16.49-44 14-19
 17.36-31 10-14
 18.41-36 17-21
 19.26x17 12x21
 20.33-28 7-12 21.34-29
 23x34 22.40x29 1-7
 23.29-24 19x30
 24.25x34 14-20
 25.38-33 21-26
 26.42-38 9-14 27.44-40
 35x44 28.39x50 14-19
 29.45-40 3-9 30.50-45
 20-25 31.47-42 19-24
 32.43-39 9-14 33.34-29
 14-20 34.40-34 11-17

35.27-22 18x27
 36.31x11 6x17 37.45-40
 17-22 38.28x17 12x21
 39.32-28 7-12 40.36-31
 13-18 41.37-32 26x37
 42.32x41 8-13 43.48-43
 2-8 44.40-35 21-27
 45.42-37 18-22
 46.28x17 12x21
 47.37-32 21-26
 48.32x21 16x27
 49.41-37 27-31
 50.35-30 24x35
 51.29-23 31x42
 52.38x47 13-19
 53.23x14 20x9 54.33-28
 25-30 55.34x25 35-40
 56.28-23 40-45
 57.23-19 9-14 58.19x10
 15x4]
13.26x17 11x31 14.36x27
20-24 15.41-36 6-11
16.33-28 1-6 17.40-35
24-30 18.35x24 19x30
19.28x19 14x23 20.25-20
15x24 21.34x25 10-14
22.39-33 13-19 23.44-39
8-13 24.33-28 11-17
25.39-33 7-11 26.37-31
2-8 27.43-39 14-20
28.25x14 9x20 29.49-44
20-25 30.42-37 17-21
31.47-42 21-26 32.44-40



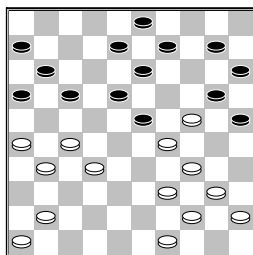
Deze stand komt voor in de
 database. **3-9**

[Het ging toen verder
 met 32...11-17
 33.27-21 16x27
 34.31x11 6x17 35.37-31
 26x37 36.42x31 24-29
 37.33x24 19x30
 38.28x19 13x24
 39.38-33 18-23
 40.40-34 12-18
 41.33-28 8-12 42.28x19
 24x13 43.48-43 3-9
 44.43-38 9-14 45.38-33
 14-19 46.32-28 17-21
 47.31-26 12-17
 48.34-29 19-24
 49.29x20 25x14
 50.45-40 14-19
 51.36-31 18-22
 52.40-35 21-27
 53.35x24 27x36
 54.24-20 19-24

55.20x29 17-21
 56.26x17 22x11
 57.28-23 36-41
 58.23-19 13x24
 59.29x20 41-46
 60.39-34 46-37
 61.20-15 37-14
 62.34-29]
33.40-34 11-17 34.27-22
18x27 35.31x11 6x17
36.36-31 9-14 37.31-27
17-21 38.45-40 12-18
39.28-22 24-29 40.33x24
19x30 41.40-35 23-28
42.32x3 21x41 43.3x20
25x14 44.35x24 41-47
45.34-29 47-36 46.38-33
36x43 47.48x39 26-31
48.39-34 16-21 49.33-28
13-18 50.34-29 21-26
51.28-23
 1-1

□ Vries,de,W. (Wiebren)
 ■ Teijn,F. (Frans)
 Nationale Clubcomj30-01-2016

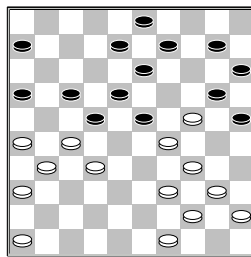
1.34-30 20-25 2.39-34
 19-23 3.33-29 13-19
 4.44-39 8-13 5.50-44
 2-8 6.38-33 14-20
 7.42-38 20-24 8.29x20
 15x24 9.47-42 10-15
 10.33-29 24x33 11.38x29
 17-22 12.30-24 19x30
 13.35x24 11-17 14.31-27
 22x31 15.37x26 5-10
 16.42-37 7-11 17.37-31
 1-7 18.48-42 9-14
 19.42-38 17-21 20.26x17
 12x21 21.32-27 21x32
 22.38x27 11-17 23.31-26
 4-9 24.43-38 7-11
 25.38-32 14-20 26.36-31



17-22
 [zwart mist een doorbraak door
 >26...25-30 27.34x5
 23x43 28.49x38 18-23
 29.5x28 17-21 30.26x17
 11x42]
27.41-36 11-17

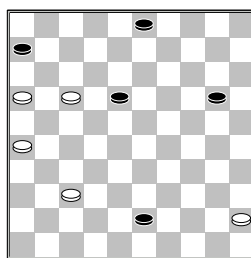
(diagram)

28.46-41
 [>28.24-19 13x33



29.39x19 9-14
 (29...9-13 30.46-41
 13x24 31.32-28 22x33
 32.27-21 16x27
 33.31x2) 30.46-41
 14x23 31.34-30 25x34
 32.40x29 23x34
 33.32-28 22x33
 34.27-21 16x27 35.31x2
]

28...22-28 29.41-37
17-22 30.40-35 10-14
31.24-19 13x33 32.34-29
23x43 33.32x12 8x17
34.49x29 14-19 35.27x18
19-23 36.18-12 23x34
37.12x21 16x27 38.31x22
34-39 39.44x33 25-30
40.35x24 20x38 41.22-17
9-13 42.26-21 38-43
43.21-16 13-18 44.36-31
15-20 45.31-26



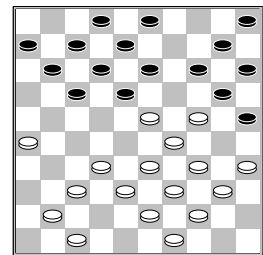
18-23
 [zwart mist een goede winstkans door
 >45...18-22 46.17x28
 43-49 47.28-22 49-38
 48.22-17 20-24]
46.37-32 en nu was de notatie van Frans niet duidelijk, hierdoor zijn de laatste zetten niet weergegeven.
 1-1

□ Zandvliet,H. (Harry)
 ■ Roozelaar,van,D. (Dir)
 Nationale Clubcomj30-01-2016

1.33-29 19-23 2.35-30
20-25 3.40-35 14-20
4.44-40 10-14 5.50-44
14-19 6.30-24 19x30
7.35x24 4-10 8.38-33
9-14 9.42-38 23-28??
10.32x23 16-21 11.31-26
21-27 12.40-35 17-22

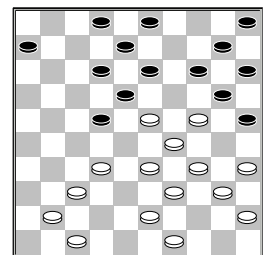
13.44-40

[zwart heeft wit een plusschijf gegeven. Zelf heb ik zoiets van waarom niet de zet die ik nu in de variant aangeef. bij bezetting van veld 42 blijft 33-28 mogelijk indien nodig(eigenlijk bedoel ik dat schijven verdeling beter is). Als we nu even de partijzetten volgen 13.45-40 27-31 14.36x27 22x42 15.48x37 11-17 16.37-32 7-11 17.41-37 1-7 18.46-41



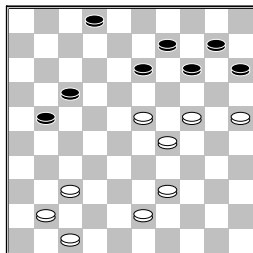
Nu mag zwart deze zet niet spelen 17-21 19.26x17 11x22 van wegen
 20.23-19 14x23
 21.32-28 23x32
 22.37x17 12x21
 23.24-19 13x24
 24.35-30 24x35
 25.29-24 20x29 26.34x1 tijdens de wedstrijd dacht ik zetje maar had niet goed op het bord gekeken en veld 44 was open. Vandaar het Idee om deze variant weer te geven. ben van mening dat 44 bezet houden een mooiere stand opleverd zeker met een schijf meer.]

13...27-31 14.36x27
22x42 15.48x37 11-17
16.37-32 7-11 17.41-37
1-7 18.46-41 17-21
19.26x17 11x22 20.32-28
7-11 21.28x17 11x22
22.38-32



22-28
 [ideetje om comensatie te zoeken is 22...13-19

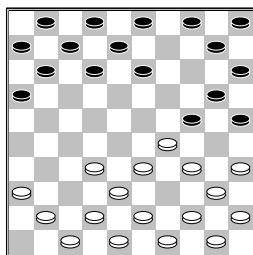
23.24x13 8x28 24.32x23
 14-19 25.23x14 10x19
 maar ja wit blijft dat
 schijf voor dus!]
23.33x22 18x38 24.43x32
13-19 25.24x13 8x28
26.32x23 14-19 27.23x14
20x9 28.29-23 12-17
29.49-43 3-8 30.34-30
25x34 31.40x29 6-11
32.35-30 11-16 33.45-40
10-14 34.40-34 8-13
35.30-24 5-10 36.34-30
16-21 37.30-25



13-18
 [zwart mist hier een
 doorbraak >37...13-19
 38.24x4 21-27 39.4x36
 17-22 40.36x20 15x44
 41.43-39 44x33]
38.23x12 17x8 39.39-33
8-12 40.37-32 2-8
41.32-28 12-18 42.28-23
8-12 43.43-39 12-17
44.23x12 17x8 45.39-34
21-27 46.41-37 8-13
47.29-23
2-0

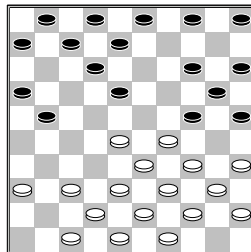
☐ Koenjbiharie, R. (Robb
 ■ Eenennaam, van, F.A. (F
 Nationale Clubcomj30-01-2016

1.32-28 18-23 2.33-29
23x32 3.37x28 20-25
4.41-37 17-21 5.37-32
21-26 6.39-33 26x37
7.32x41 14-20 8.41-37
19-23 9.28x19 13x24
10.37-32 9-13 11.46-41

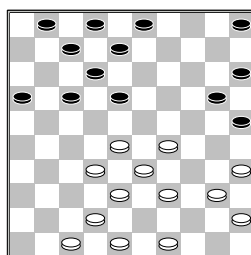


Deze stand komt voor in de
 database **13-18**
 [De variant gaat verder
 als volgt: 11...11-17
 12.41-37 16-21
 13.44-39 21-27

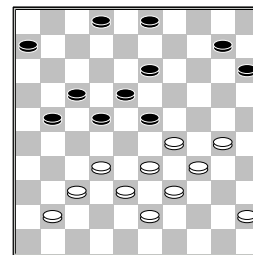
14.32x21 17x26
 15.38-32 6-11 16.32-28
 11-17 17.28-23 13-19
 18.23x14 20x9 19.29x20
 25x14 met gelijkwaardige
 stand]
12.41-37 10-14 13.44-39
11-17 14.50-44 17-21
15.32-28



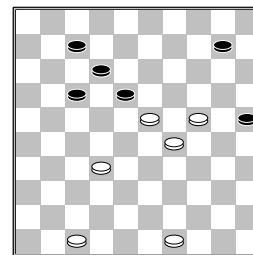
4-10 dat is een schijf te
 veel op de lange lijn. deze
 zet was niet echt nodig
 [15...21-26 16.38-32
 5-10 17.43-38 6-11
 18.49-43 11-17
 19.37-31 26x37
 20.42x31 17-22
 21.28x17 12x21
 22.47-42 21-26
 23.32-28 26x37
 24.42x31 met
 gelijkwaardige maar
 spannende stand]
16.37-32 21-26 17.34-30
25x23 18.28x30 20-25
19.32-28 25x34 20.40x29
6-11 21.44-40 11-17
22.38-32 14-20 23.36-31
26x37 24.32x41 20-25
25.41-37 10-14 26.37-32
14-20 27.43-38



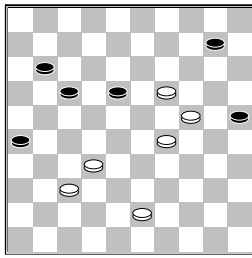
18-22
 [Probleemlozere opbouw
 is 27...20-24 28.29x20
 25x14 29.40-34 7-11
 30.34-29 1-6 31.42-37
 5-10 32.39-34 17-22
 33.28x17 11x22
 34.35-30 14-19
 35.49-43 8-13 36.43-39
 19-23 37.48-43 12-17
 38.47-41 16-21
 (diagram)
 39.37-31 (39.32-28?)



23x32 40.38x16 17-21
 41.16x27 22x42)
 39...21-26 40.31-27
 22x31 41.32-28 23x32
 42.38x36 17-22]
28.39-34 22-27 29.32x21
16x27 30.29-24 20x29
31.33x24 12-18 32.34-30
25x34 33.40x29 8-13
34.35-30 3-9 35.30-25
17-22 36.28x17 18-23
37.29x18 13x11 38.42-37
9-14 39.45-40 2-8
40.40-34 8-13 41.38-33
14-19 42.34-29 19x30
43.25x34 15-20 44.34-30
20-25 45.30-24 5-10
46.48-43 7-12 47.37-32
27x38 48.43x32 13-18
49.33-28 11-17 50.28-23
1-7



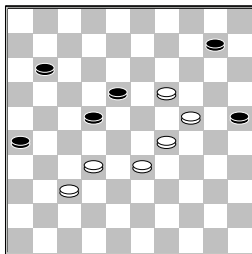
51.23-19
 [Beter voor wit
 51.32-27 7-11 52.23-19
 11-16 (52...17-22
 53.29-23 18x20
 54.27x16 20-24
 55.19x30 25x34
 56.49-44 met winst)
 53.49-43 17-21
 54.27-22 18x27
 55.19-13 27-32
 (55...10-14 56.29-23
 27-32 57.24-20 25-30
 58.20x9 30-34 59.9-4
 34-40 60.4-10 12-17
 61.13-9 40-44 62.9-4
 44-50 63.23-18 32-38
 64.43x32 50-45
 65.18-13 met winst.)
 56.29-23 21-26
 57.23-19 26-31 58.13-9
 31-36 59.9-4 32-37
 60.4x15 37-41]
51...17-21 52.47-41
21-26 53.41-37 12-17
54.49-43 7-11



55.43-38

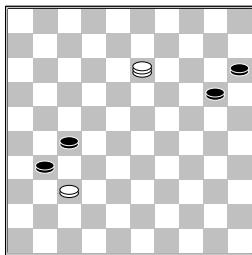
[Beter voor wit is de volgende variant
 >55.32-28 17-21
 56.43-38 21-27
 57.28-22 27-31
 58.22x13 31x33
 59.29x38 26-31 60.13-9
 31-36 61.9-4 36-41
 62.4x15 41-46 63.19-13
 46-19 met remise als resultaat]

55...17-22 56.38-33



22-27

[Een andere optie voor zwart is >56...11-17
 57.33-28 22x33
 58.29x38 17-21
 59.38-33 18-22
 60.19-13 22-27 61.13-9
 27x20 62.9-4 10-15
 63.4-13 25-30 64.13x35
 21-27 65.35-13 26-31



deze stand komt voor in de eindspel database
 66.37x26 27-32 remise in alle varianten]

**57.32x21 26x17 58.33-28
 11-16 59.37-31 16-21
 60.31-26 21-27 61.28-23
 10-14
 1-1**