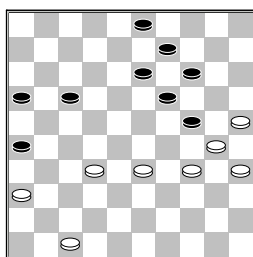


Coray,R. (Roland)
 Callender,H.E. (Hedwi)
 Nationale Clubcom,28-11-2015

1.32-28 18-23 2.34-29
 23x32 3.37x28 17-21
 4.31-26 19-24 5.26x17
 12x21 6.41-37 7-12
 7.39-34 2-7 8.44-39
 12-17 9.37-32 7-12
 10.34-30 14-19 11.30-25
 10-14 12.50-44 1-7
 13.46-41 21-26 14.41-37
 17-22 15.28x17 11x22
 16.40-34 24-30 17.35x24
 19x30 18.44-40 30-35
 19.32-28 35x44 20.28x17
 12x21 21.39x50 5-10
 22.45-40 13-19 23.40-35
 20-24 24.29x20 15x24
 25.34-30 9-13 26.50-45
 4-9 27.43-39 8-12
 28.33-28 12-18 29.28-22
 18x27 30.37-31 26x37
 31.42x22 6-11 32.38-33
 7-12 33.39-34 10-15
 34.45-40 12-18 35.34-29
 18x27 36.29x20 15x24
 37.40-34 27-32 38.48-42
 21-26 39.42-38 32x43
 40.49x38 11-17 41.38-32



13-18?
 [Zwart mist de winst
 door >41...14-20
 42.25x23 13-18
 43.23x21 16x40
 44.35x44 24x35
 45.44-39 9-13 46.39-33
 13-18 47.33-29]
 42.34-29 17-22 43.29x20
 22-27 44.32x21 16x27
 45.30-24 19x30 46.35x24
 18-22 47.24-19 14x23
 48.20-14 9x20 49.25x14
 27-32 50.14-10 23-29
 51.33x24 32-38 52.36-31
 26x37 53.10-4 22-28
 54.4-10 28-32 55.24-20
 1-1