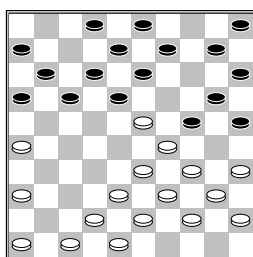


□ Kolstee, J. (John)
 ■ Wahjuwibowo, K. (Kirst)
 Bram Limburg Bokai: 19-02-2013

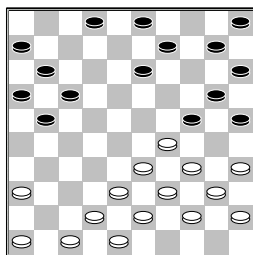
De opmerkingen komen van Flits behalve als er JG voor de opmerking staat

- 1.33-29 19-23 2.35-30
- 20-25 3.40-35 17-22
- 4.45-40 11-17 5.31-26
- 6-11 6.37-31 23-28
- 7.32x23 22-27 8.31x22
- 17x19 9.41-37 11-17
- 10.50-45 14-20 11.39-33
- 19-24 12.30x19 13x24
- 13.44-39 9-13 14.49-44
- 4-9 15.37-32 1-6
- 16.32-28 7-11 17.28-23



9-14

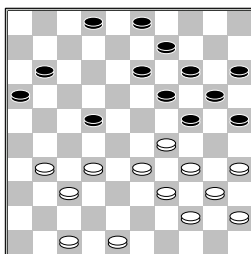
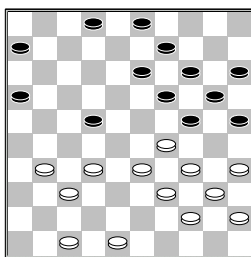
[JG: beter voor zwart is de volgende variant zodat wit in de hekstelling blijft staan. schijf 49 is opgespeeld dus een optie veld 27 te gaan bezetten is een goede mogelijkheid 17...17-21
 18.26x17 12x21
 19.23x12 8x17



- A) 20.38-32 verplicht om niet erg slecht te komen staan 10-14
- 21.32-28 14-19
 - 22.36-31 21-26
 - 23.43-38 26x37
 - 24.42x31 5-10
 - 25.38-32 10-14
 - 26.46-41 17-22
 - 27.28x17 11x22
 - 28.41-37

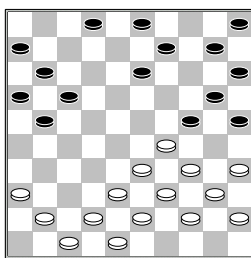
(diagram)

6-11



- (28...19-23 29.29x27
- 16-21 30.27x16 24-30
- 31.35x24 20x36)
- 29.32-28 (29.47-42
- 19-23 30.29x27 24-30
- 31.35x24 20x47)
- 29...11-17 met spannende stand waar ik zelf het liefste zwart zou hebben

B) 20.46-41



- B1) 20...13-18
- 21.42-37 (21.41-37?
 - 18-23 22.29x18 17-22
 - 23.18x27 21x41
 - 24.42-37 41x32
 - 25.38x27 24-30
 - 26.35x24 20x49)
 - 21...9-13 22.38-32
 - (22.37-32 24-30
 - 23.35x24 13-19
 - 24.24x22 17x46)
 - 22...21-26 23.43-38
 - 17-22 24.32-28 10-14
 - 25.28x17 11x22
 - 26.38-32 14-19
 - 27.48-42 3-9
 - 28.32-27 22x31
 - 29.36x27 19-23
 - 30.37-32 2-8
 - 31.42-37 18-22
 - 32.27x18 23x12
 - 33.32-28 13-18
 - B2) 20...21-27
 - 21.41-37 17-22

- 22.37-31 10-14
- 23.42-37 14-19
- 24.47-42 3-8
- 25.31-26 11-17
- 26.37-32 8-12
- 27.32x21 16x27
- 28.42-37 6-11
- 29.29-23 19x28
- 30.26-21

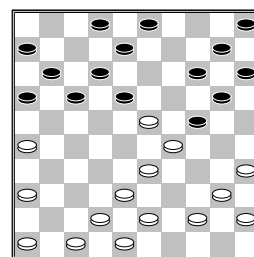
B2a) 30...27x16

- 31.33-29 24x31
- 32.36x7 17-22
- 33.7-1 13-18
- 34.1x46 9-14
- 35.46x10 5x14

B2b) 30...17x26?

- 31.37-32 (31.34-30?
- 25x34 32.39x6 28x50
- 33.37-32 9-14
- 34.32x21 26x17
- 35.6-1) 31...28x37
- 32.34-30 25x34
- 33.39x6]

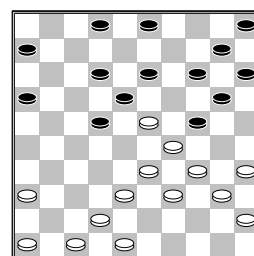
18.34-30 25x34 19.39x19
 13x24



20.44-39

- [>20.43-39 3-9
- 21.48-43 20-25
 - 22.29x20 15x24
 - 23.39-34 18x29
 - 24.34x23 24-30
 - 25.35x24 14-20
 - 26.24x13 8x37 27.47-41
 - 37-42 28.38x47 16-21
 - 29.47-42 21-27]

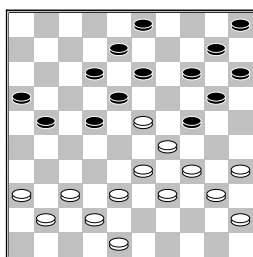
20...17-21 21.26x17
 11x22 22.39-34 8-13
 23.43-39



2-8

- [>23...13-19 24.36-31
- 19x28 25.31-27 22x31
 - 26.33x13 24x44
 - 27.40x49 3-8 28.46-41
 - 8x19 29.41-36 31-37
 - 30.42x31 20-24
 - 31.34-30 24-29

32.45-40 19-23]
 24.46-41 16-21 25.41-37
 6-11 26.47-41 11-16



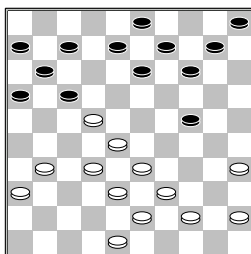
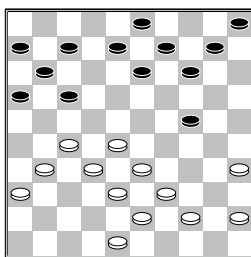
27.37-32
 [>27.48-43 21-26
 28.34-30 13-19
 29.40-34 19x28
 30.30x19 14x23
 31.38-32 16-21
 32.36-31 8-13 33.43-38
 22-27 34.33x22 27x47
 35.39-33 18x27 36.29x7
 27-31 37.7-1]
27...22-28 28.33x22
24x44 29.40x49 18x40
30.35x44 12-18 31.42-37
18x27 32.37-31 21-26
33.31x22 16-21 34.49-43
 [>34.44-39 21-27
 35.32x21 26x28
 36.38-33 28-32
 37.49-43 14-19
 38.48-42 13-18
 39.42-38 19-23
 40.38x27 8-12 41.27-21
 12-17 42.21x12 18x7
 43.45-40 20-24]

34...21-27
 0-2
 □ Wahjuwibowo,K. (Kirst)
 ■ Kok,de,W. (Wim)
 clubcompetitie ZH11-02-2013

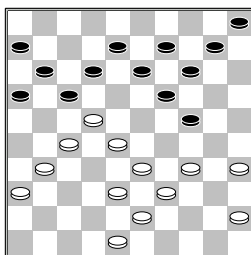
opmerkingen zijn gemaakt
 door flits 1.32-28
 18-23 2.33-29 23x32
 3.37x28 19-24 4.39-33
 17-22 5.28x17 11x22
 6.31-27 22x31 7.36x27
 14-19 8.43-39 20-25
 9.29x20 25x14 10.49-43
 12-17 11.41-37 7-12
 12.46-41 1-7 13.38-32
 17-21 14.42-38 13-18
 15.47-42 9-13 16.33-28
 4-9 17.39-33 7-11
 18.44-39 21-26 19.50-44
 2-7 20.41-36 18-23
 21.37-31 26x37 22.42x31
 12-17 23.34-29 23x34
 24.40x29 19-24 25.29x20
 15x24

(diagram)

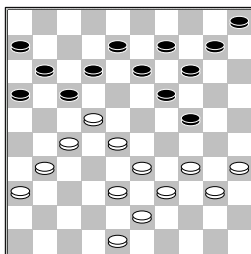
26.27-22



[>26.39-34 10-15
 27.43-39 14-19
 28.31-26 17-21
 29.26x17 11x31
 30.36x27 13-18
 31.44-40 8-13 32.27-21
 16x27 33.32x21 5-10
 34.48-43]
26...13-19
 [>26...14-19 27.31-26
 10-15 28.44-40 7-12
 29.40-34 19-23
 30.28x30 17x37
 31.30-24 9-14 32.33-29
 12-17]
27.32-27 7-12 28.44-40
9-13 29.40-34 3-9

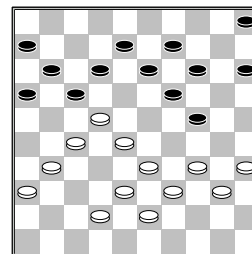


30.45-40



[>30.34-30 10-15
 31.39-34 12-18
 32.31-26 18-23
 33.38-32 8-12 34.43-38
 15-20]
30...10-15

[>30...12-18 31.34-30
 18-23 32.22-18 23x21
 33.18-12 10-15 34.12x3
 21-26 35.3x21 26x17
 36.40-34 13-18
 37.48-42 16-21
 38.31-27 21x32
 39.38x27 18-23]
31.48-42



14-20
 [>31...12-18 32.42-37
 18-23 33.38-32 15-20
 34.34-30]
32.34-30 20-25 33.28-23
25x45 34.23x3 17x28
35.33x22 11-17 36.22x11
6x17 hierna hield de
 notatie op, Kirsty komt
 gewonnen te staan maar door
 zeer onsportief gedrag van
 de heer de Kok verloor
 Kirsty deze partij op tijd.
0-2 (1.00/)

□ Ottevanger,A. (Andrie)
 ■ Yigitturk,B. (Berke)
 clubcompetitie ZH11-02-2013

1.32-28 19-23 2.28x19
14x23 3.37-32 10-14
4.41-37 14-19 5.33-29
5-10
 [>5...4-10 6.47-41
 10-14 7.32-28 23x32
 8.37x28 18-23 9.29x18
 12x32 10.38x27 17-21
 11.42-37 21x32
 12.37x28 16-21
 13.39-33 11-17
 (-0.09;1.83/12)]
6.29-24 20x29 7.32-28
23x41 8.34x5 17-22
9.46x37 4-10 10.5x17
11x22 11.37-32 6-11
12.32-27 11-17 13.31-26
22x31 14.26x37 1-6
15.37-32 6-11 16.39-33
17-22 17.44-39 11-17
18.50-44 7-11 19.40-34
9-14 20.34-30 16-21
21.33-29 21-26 22.42-37
11-16 23.47-42 17-21
24.39-33 22-27
 [>24...21-27 25.32x21
 16x27 26.37-31 26x37
 27.42x31 14-20
 28.44-40 20-25

29.29-24 25x34
30.40x29 13-19
31.24x13 8x19 32.38-32
27x38 33.43x32
(1.93;2.63/11)]
25.33-28 14-19
[>25...14-20 26.44-39
18-22 27.28x17 3-9
28.17-11 16x7 29.32-28
9-14 30.39-34
(2.60;2.97/10)]
26.29-24 18-23 27.30-25
19x30 28.35x24 13-19
29.24x13 8x19 30.37-31
26x37 31.42x22
2-0

Yigitturk,B. (Berke)
 Bronstring,E.P. (Ever
Bram Limburg Bokai5-01-2013

1.32-28 18-23 2.34-29
23x34 3.40x29 12-18
4.44-40 7-12 5.37-32
19-23 6.28x19 14x34
7.40x29 10-14 8.45-40
14-19 9.41-37 19-24
10.32-28 1-7 11.46-41
17-21 12.31-26 5-10
13.26x17 11x22 14.28x17
12x21 15.37-32 7-12
16.49-44 21-26 17.41-37
18-22 18.32-28 13-18
19.28x17 12x21 20.40-34
10-14 21.50-45 14-19
22.34-30 20-25 23.29x20
25x14 24.45-40 8-13
25.40-34 6-11 26.34-29
11-17 27.29-24 17-22
28.39-34 18-23 29.44-40
23-29 30.34x23 19x39
31.43x34 13-18 32.38-33
9-13 33.30-25 en toen
kwam ik niet meer uit de
notatie
0-2 (0.39/0.32)